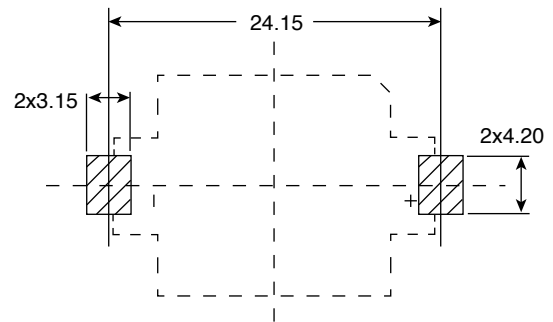


Section: A-A



PCB Mounting Layout

DIMENSIONS: mm

SPECIFICATIONS	
Contact Material:	.15 mm Thick Phosphor Bronze Tin Plated
Current Rating:	.5A (AC/DC)
Voltage Rating:	500V (AC/DC)
Contact Resistance:	30mΩ
Insulation Resistance:	100MΩ
Temperature Range:	-55°C to +85°C
Battery Size:	CR1632
RoHS Compliant	