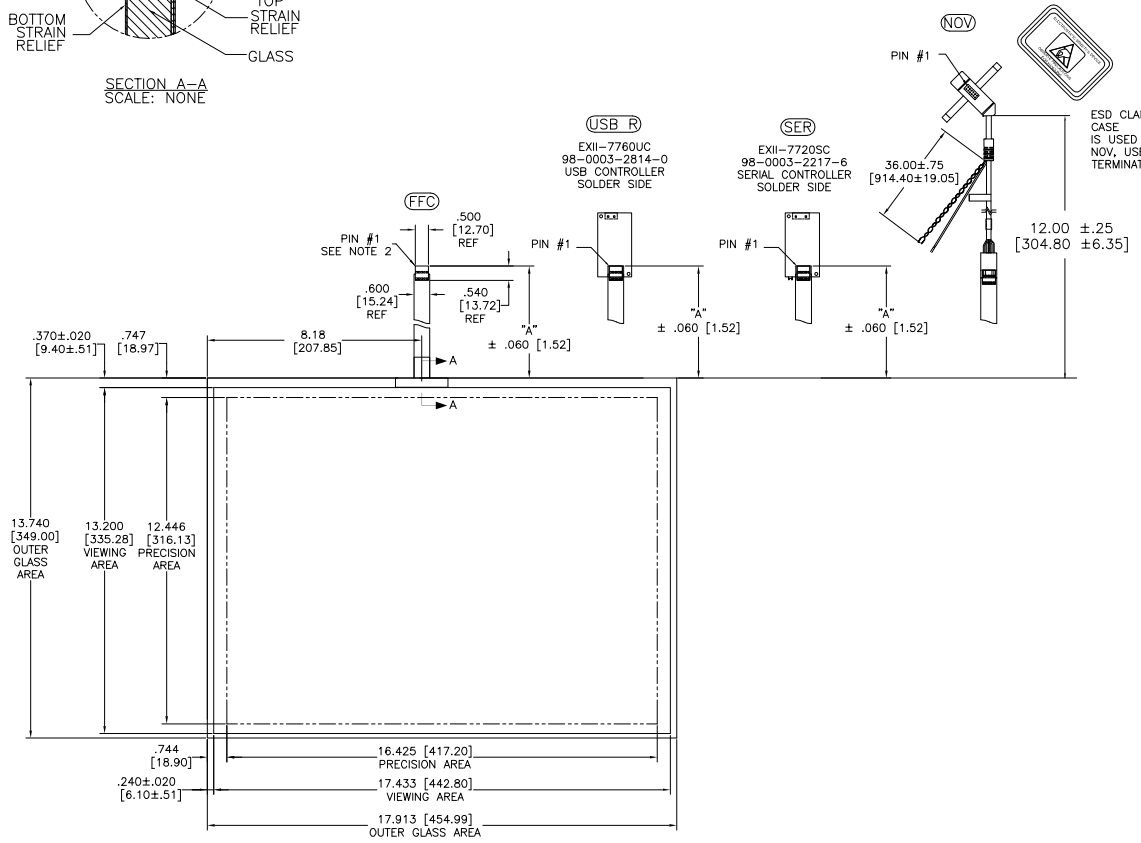
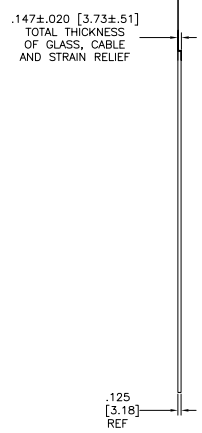
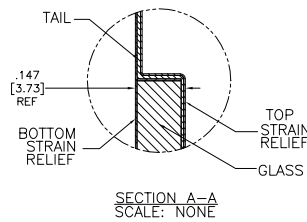
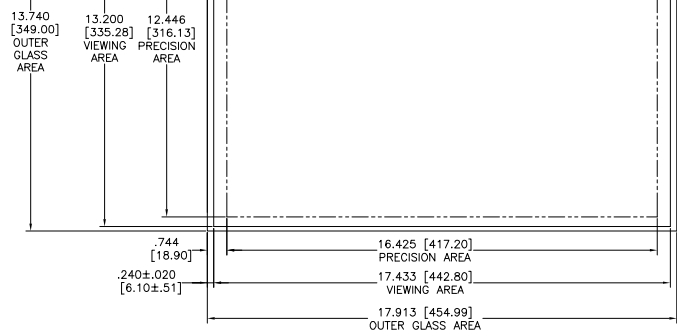


OGA DIAGONAL: 22.58 [573.42]
 VA DIAGONAL: 21.87 [555.41]
 PA DIAGONAL: 20.61 [523.44]

TOP LEVEL NUMBER	US NUMBER	TYPE	DIM "A" (TOTAL GLASS TO CONNECTOR)	A/G FINISH	PROD SPEC
17-8541-203	98-0003-2616-9	FFC	4.27" [108.46]	AG500	23655
17-8541-221	98-0003-2620-1	SER	4.27" [108.46]	AG500	23655
17-8541-206	98-0003-2618-5	NOV	SEE DWG	AG500	23655
17-8541-204	98-0003-3158-1	FFC	6.00" [152.40]	AG500	23655
17-8541-223	98-0003-2199-6	SER	6.00" [152.40]	AG500	23655
17-8541-205	98-0003-2617-7	FFC	8.00" [203.20]	AG500	23655
17-8541-227	98-0003-2621-9	SER	8.00" [203.20]	AG500	23655
17-8541-218	98-0003-3159-9	USB R	4.27" [108.46]	AG500	23655
17-8541-220	98-0003-3160-7	USB R	6.00" [152.40]	AG500	23655
17-8541-226	98-0003-3162-3	USB R	8.00" [203.20]	AG500	23655



ESD CLAMSHELL CASE IS USED WITH ALL NOV, USB AND SER TERMINATIONS.



- NOTES:
- WEIGHT OF GLASS IN GRAMS: 1210±10%
 - NICOMATIC HOUSING P/N: OL05
 NICOMATIC RECEPTACLES (PINS) MATTE TIN PLATED P/N: 14106-12
 HOUSING ORIENTED WITH LATCH DOWN

PINOUT	
1	LL
2	UL
3	SHLD
4	UR
5	LR

H	REVISED PER CO 036256	4/13	SB
G	REVISED PER CO 033533	2/12	SB
F	REVISED PER CO 033616	9/11	SB
REV	CHANGE NOTICE	DATE	DRW

UNITS INCHES [MM]

TOLERANCES UNLESS OTHERWISE SPECIFIED

.X ±
 .XX ±.03 [.76]
 .XXX ±.015 [.38]
 ANGLES ±1°

THIRD ANGLE PROJECTION

DO NOT SCALE DRAWING

SCALE 1 = 1

3M 3M TOUCH SYSTEMS
 METHUEN, MA
 USA

© COPYRIGHT 2004
 THIS DOCUMENT IS COPYRIGHTED PROPERTY OF THE 3M COMPANY AND MAY NOT BE REPRODUCED WITHOUT 3M WRITTEN PERMISSION OR USED OR DISCLOSED FOR OTHER THAN 3M AUTHORIZED PURPOSES.

DRAWN K CROWLEY 9/05

TITLE

MARKETING DRAWING
 SCT32NN 21.87"

CAD FORMAT AUTOCAD SHEET 1 OF 1

SIZE DOCUMENT NO. 28423-MKT REV H