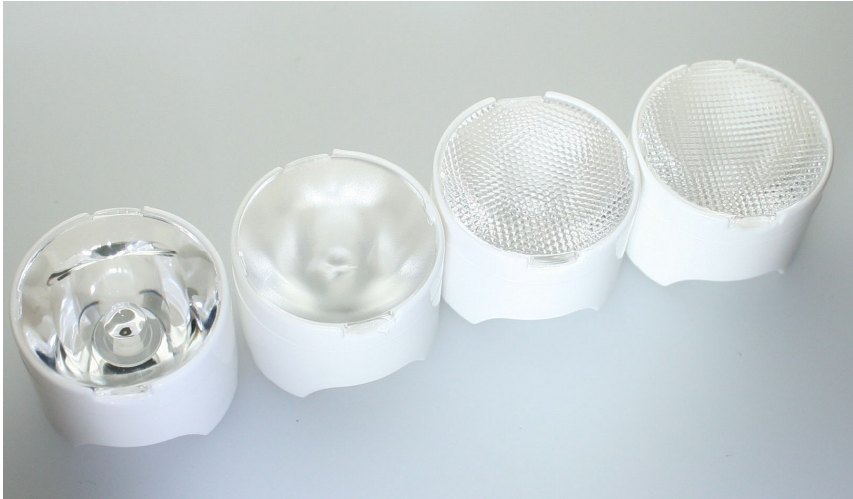


## LD1 LENSES FOR OSRAM-OS DIAMOND DRAGON LEDs



- Specially designed for Osram-os Diamond Dragon series of LEDs.
- Special care taken to make a uniform white or warm white illumination. Lenses work well with other colors, too.
- Lens material optical grade PMMA. Allows use of high current and temperature conditions
- Best available optical efficiency, more than 90%, with an extremely good cutoff of light
- Fastening of holden to PCB with appropriate adhesive, e.c. epoxy or polyurethane based. NOTE: DO NOT USE SUPERGLUE.

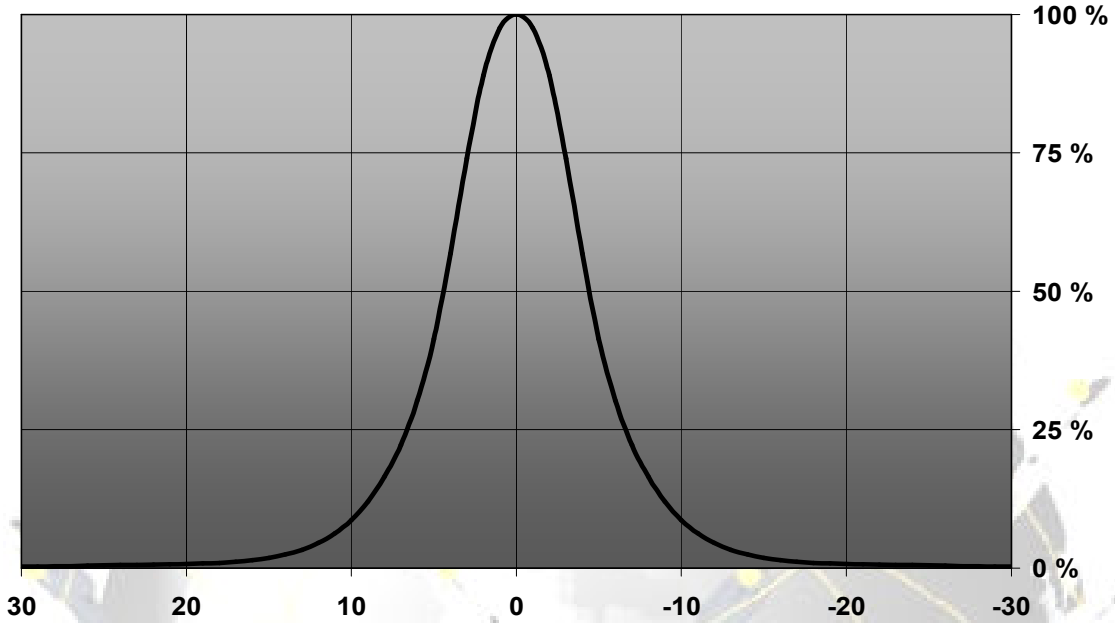
## LENS TYPES

NAME	ORDERING CODE	FWHM Angle
LD1 REAL SPOT	FA10796_LD1-RS	±4
LD1 DIFFUSER	FA10798_LD1-D	±7
LD1 MEDIUM	FA10795_LD1-M	±12
LD1 OVAL	FA11107_LD1-O-90	coming soon
LD1 RECTANGULAR	FA10797_LD1-Rec	±20 x ±12

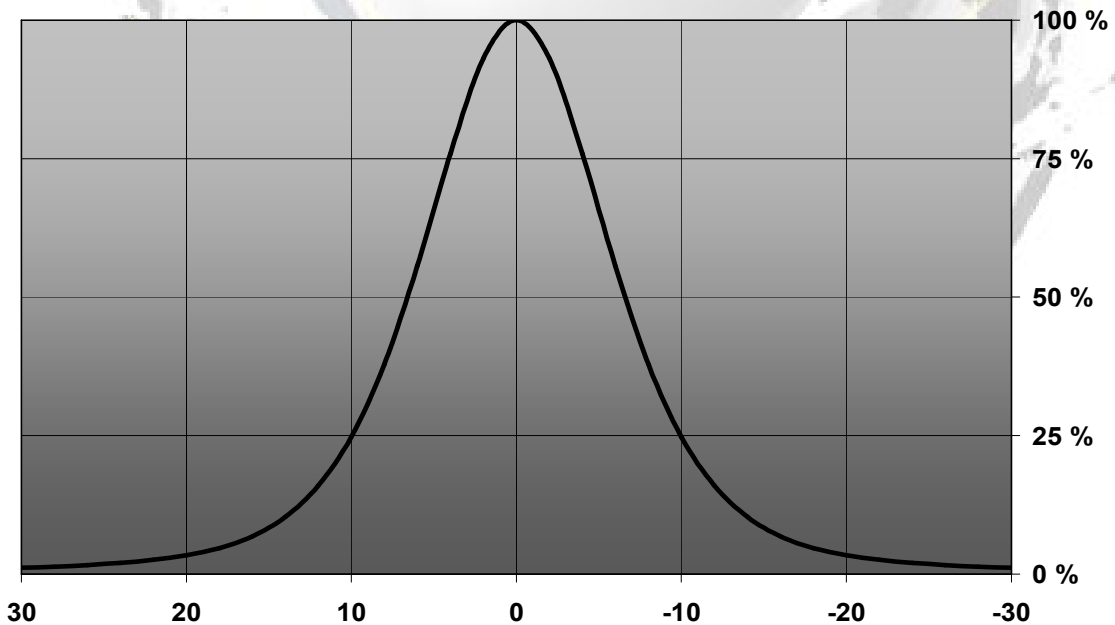
© Ledil Oy – PRELIMINARY - Subject to change without prior notice

## MEASUREMENT DATA

Relative Intensity of LD1-RS

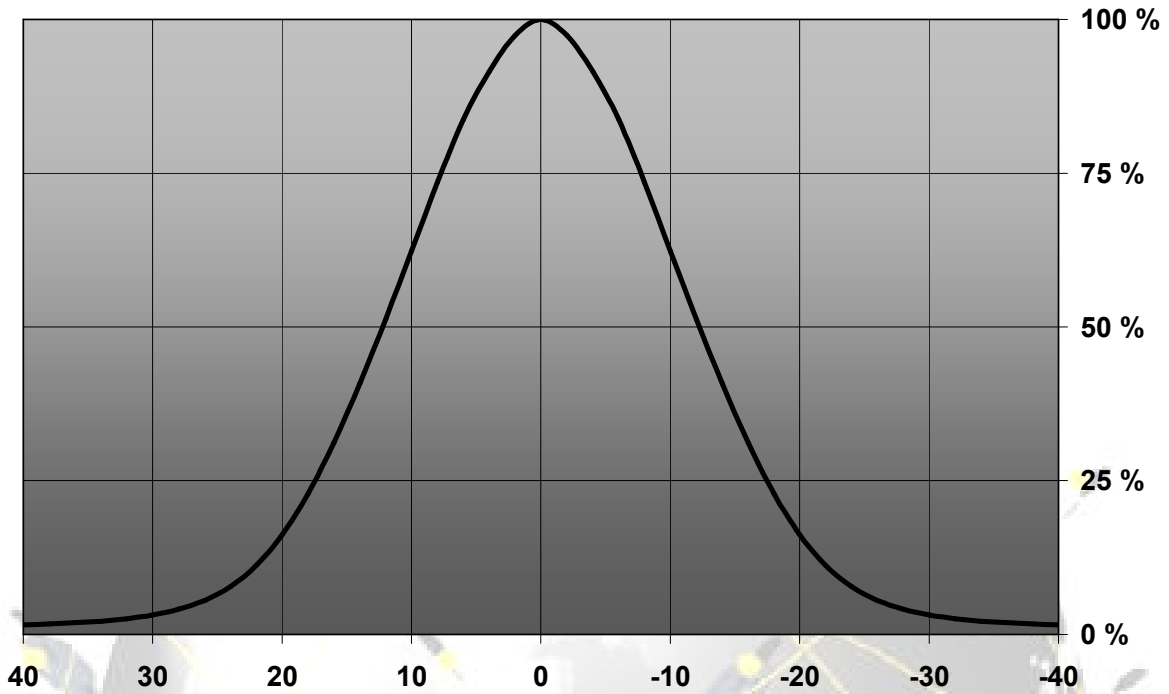


Relative Intensity of A10798\_LD1-D

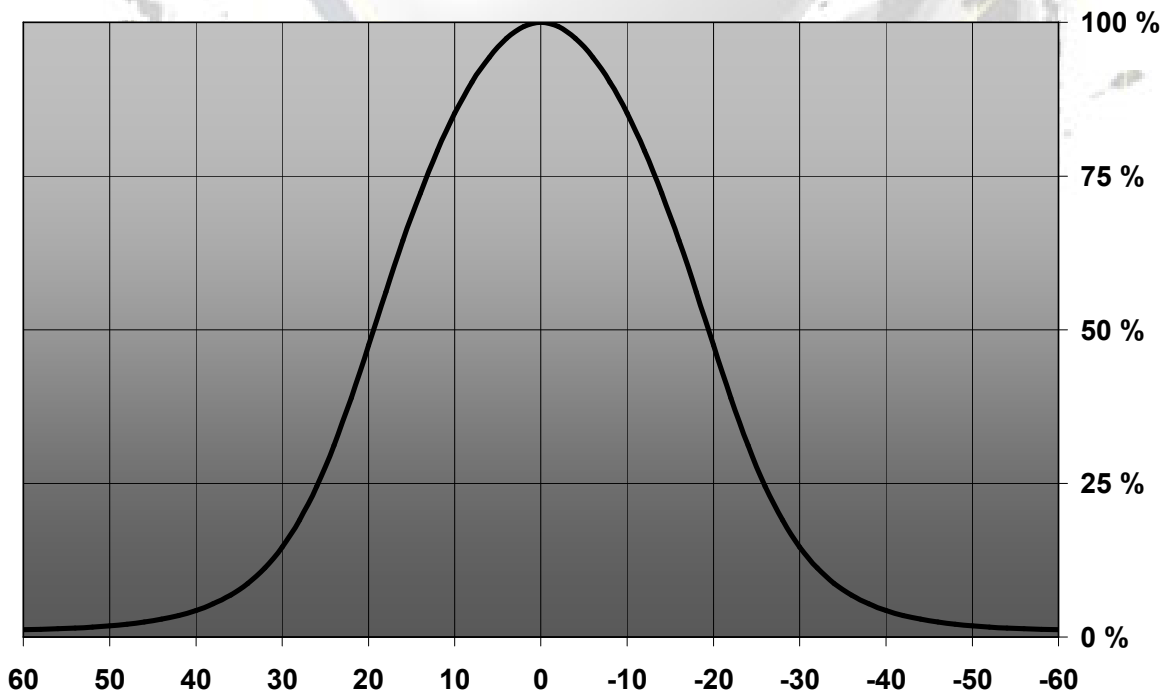


© Ledil Oy – PRELIMINARY - Subject to change without prior notice

Relative Intensity of LD1-M

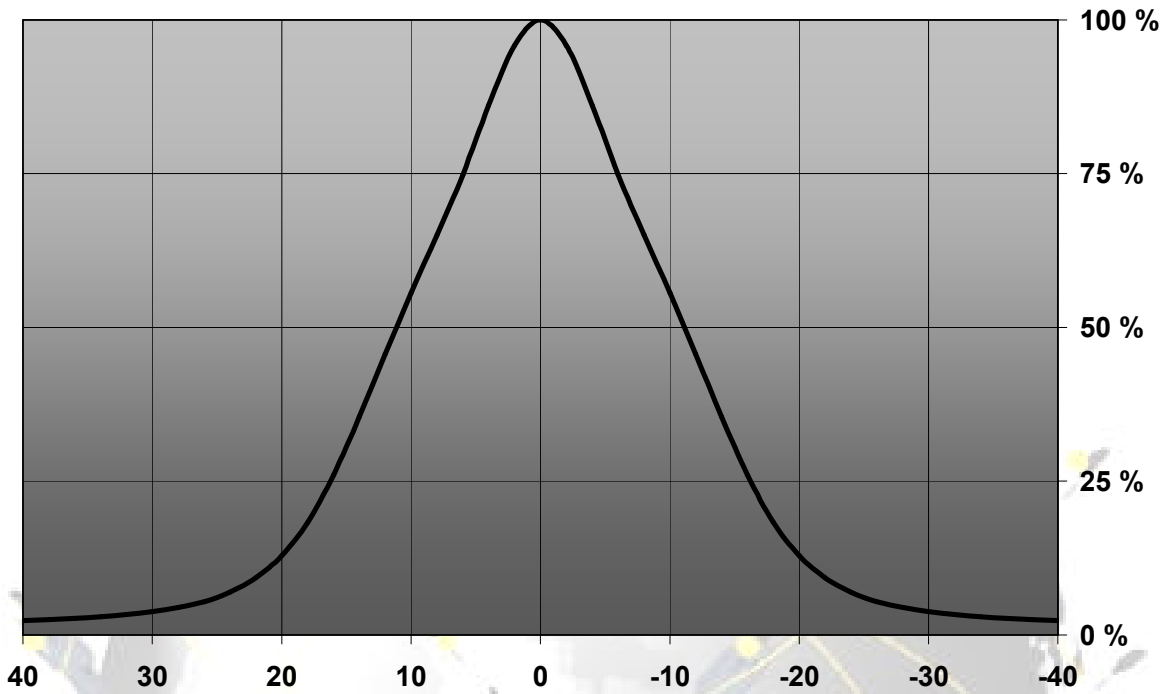


Relative Intensity of LD1-REC (horizontal)



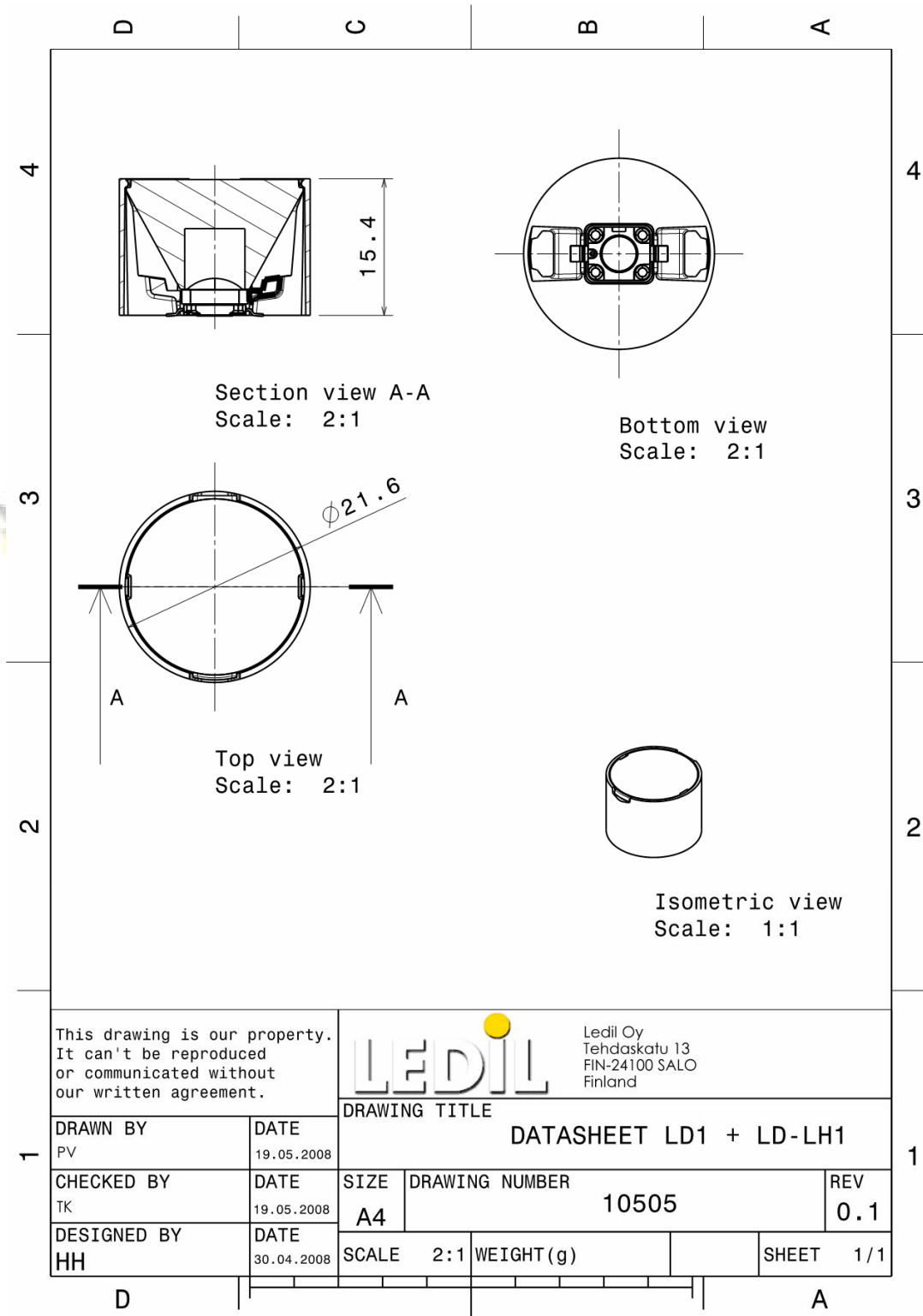
© Ledil Oy – PRELIMINARY - Subject to change without prior notice

Relative Intensity of LD1-REC (vertical)



EULUMDAT & IES FILES AVAILABLE BY REQUEST

## DRAWINGS



This drawing is our property.  
It can't be reproduced  
or communicated without  
our written agreement.



Ledil Oy  
Tehdaskatu 13  
FIN-24100 SALO  
Finland

DRAWING TITLE

DATASHEET LD1 + LD-LH1

DRAWN BY PV	DATE 19.05.2008
----------------	--------------------

CHECKED BY TK	DATE 19.05.2008
------------------	--------------------

DESIGNED BY HH	DATE 30.04.2008
-------------------	--------------------

SIZE A4	DRAWING NUMBER 10505	REV 0.1
------------	-------------------------	------------

SCALE 2:1	WEIGHT (g)	SHEET 1/1
--------------	------------	--------------