

LAURA LENSES FOR LUXEON REBEL LEDS



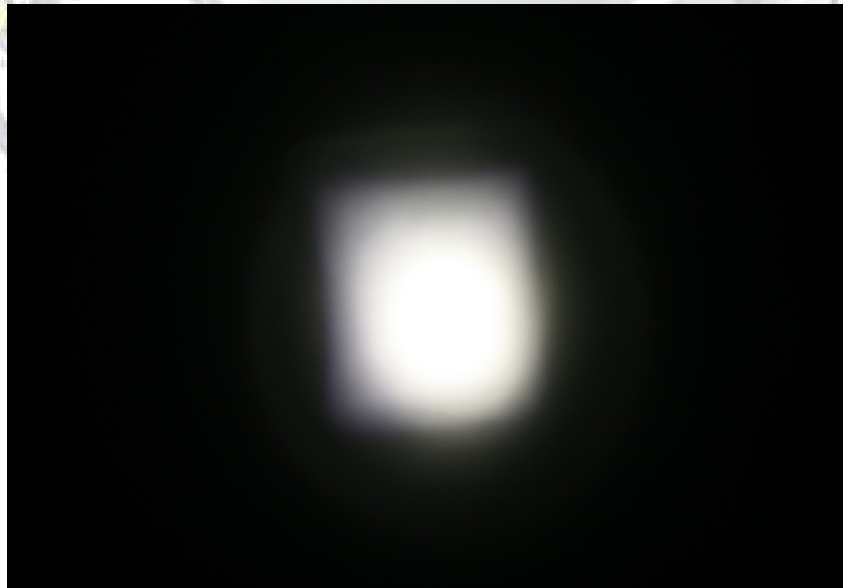
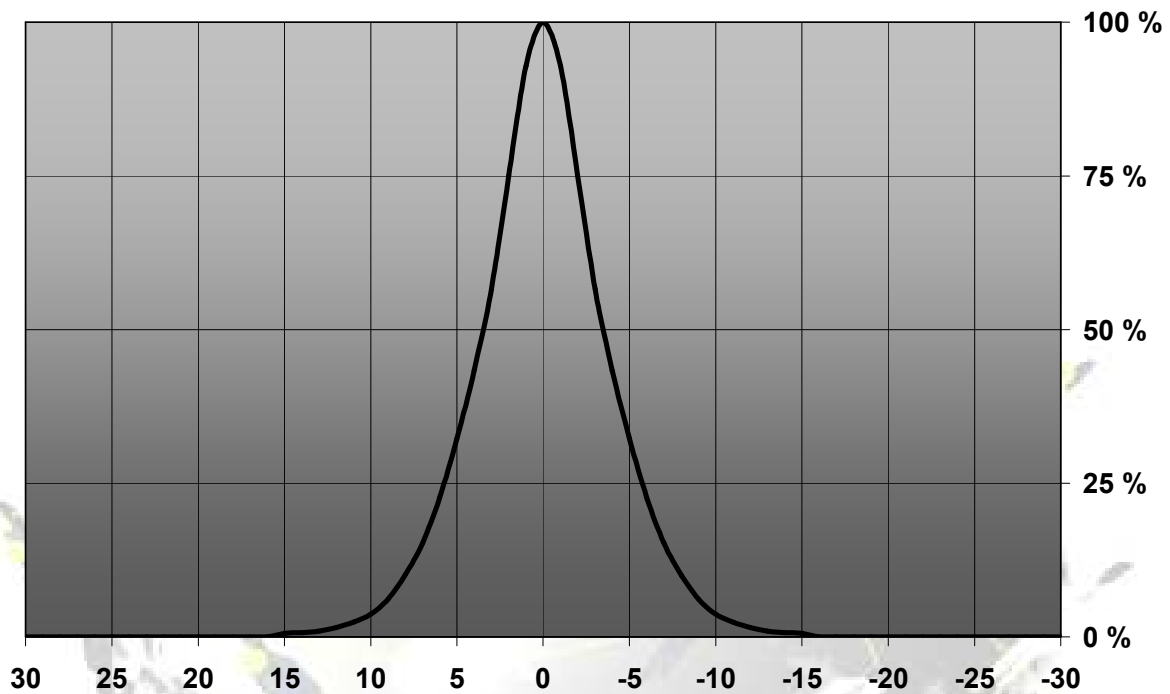
- Designed & optimized for Luxeon Rebel series of LEDs
- Lens material optical grade PMMA with high UV and temperature resistance (105°C/220°F). Allows use of high current and temperature conditions
- Best available optical efficiency, up to 90%, with an extremely good cutoff of light
- Integrated holder. Fastening to heat sink with a PU foam adhesive tape of automotive grade
- Please check fastening details from this link:
(http://www.ledil.com/datasheets/DataSheet_TAPE.pdf)
- Compact dimensions 21.6 x 21.6 mm. Square form enables easy build of matrix without any gaps between lenses.

LENS TYPES

NAME	ORDERING CODE	FWHM Angle
LAURA REAL SPOT	CA11352_Laura-RS-RE-tape	±3.5°
LAURA SMOOTH SPOT	CA11645_Laura-SS-RE-tape	Coming soon
LAURA DIFFUSER	CA11359_Laura-D-RE-tape	±7°
LAURA MEDIUM	CA11354_Laura-M-RE-tape	Coming soon
LAURA OVAL	CA11364_Laura-O-RE-tape	Coming soon

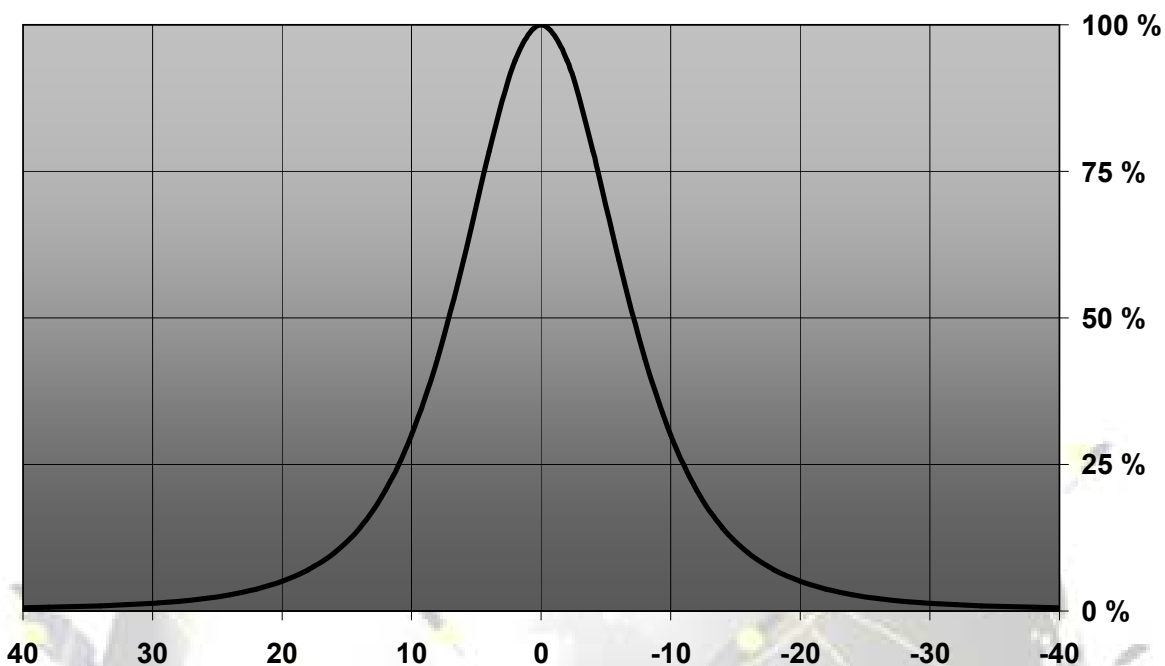
MEASUREMENTS

Relative Intensity of CA11352_Laura-RS-RE-tape



© Ledil Oy – PRELIMINARY - Subject to change without prior notice

Relative intensity of CA11359_Laura-D-RE-tape



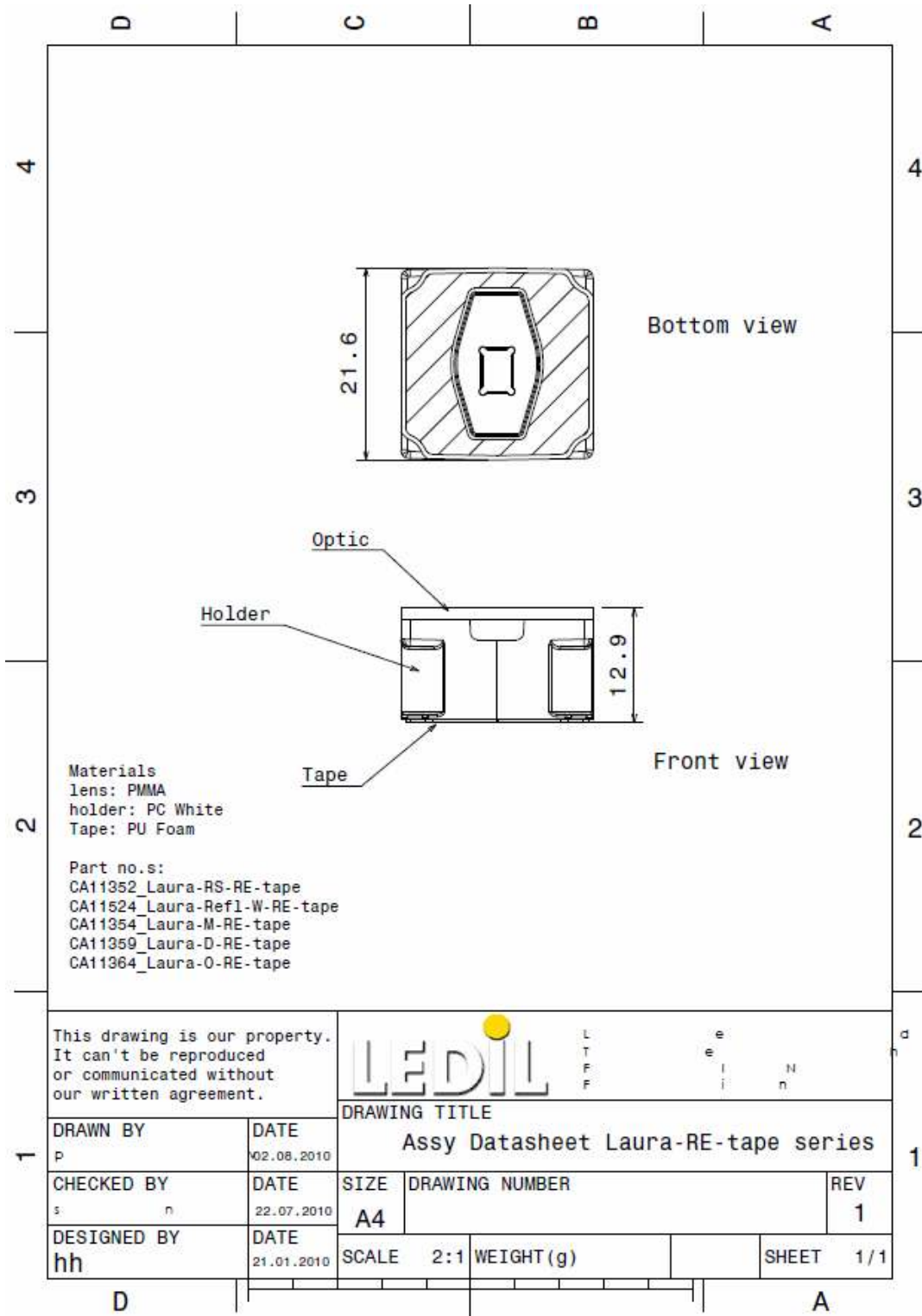
© Ledil Oy – PRELIMINARY - Subject to change without prior notice

Ledil Oy
Tehdaskatu 13
FIN-24100 SALO, Finland

www.ledil.com
email: ledil@ledil.com
FAX: +358-2-733 8001

2010-08-02

DRAWINGS



© Ledil Oy – PRELIMINARY - Subject to change without prior notice