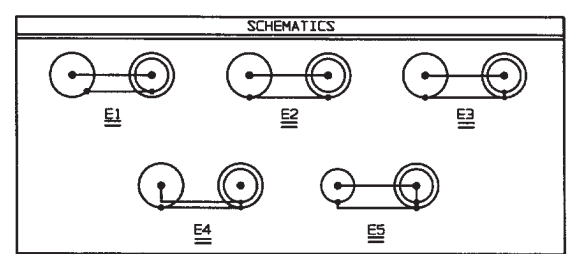
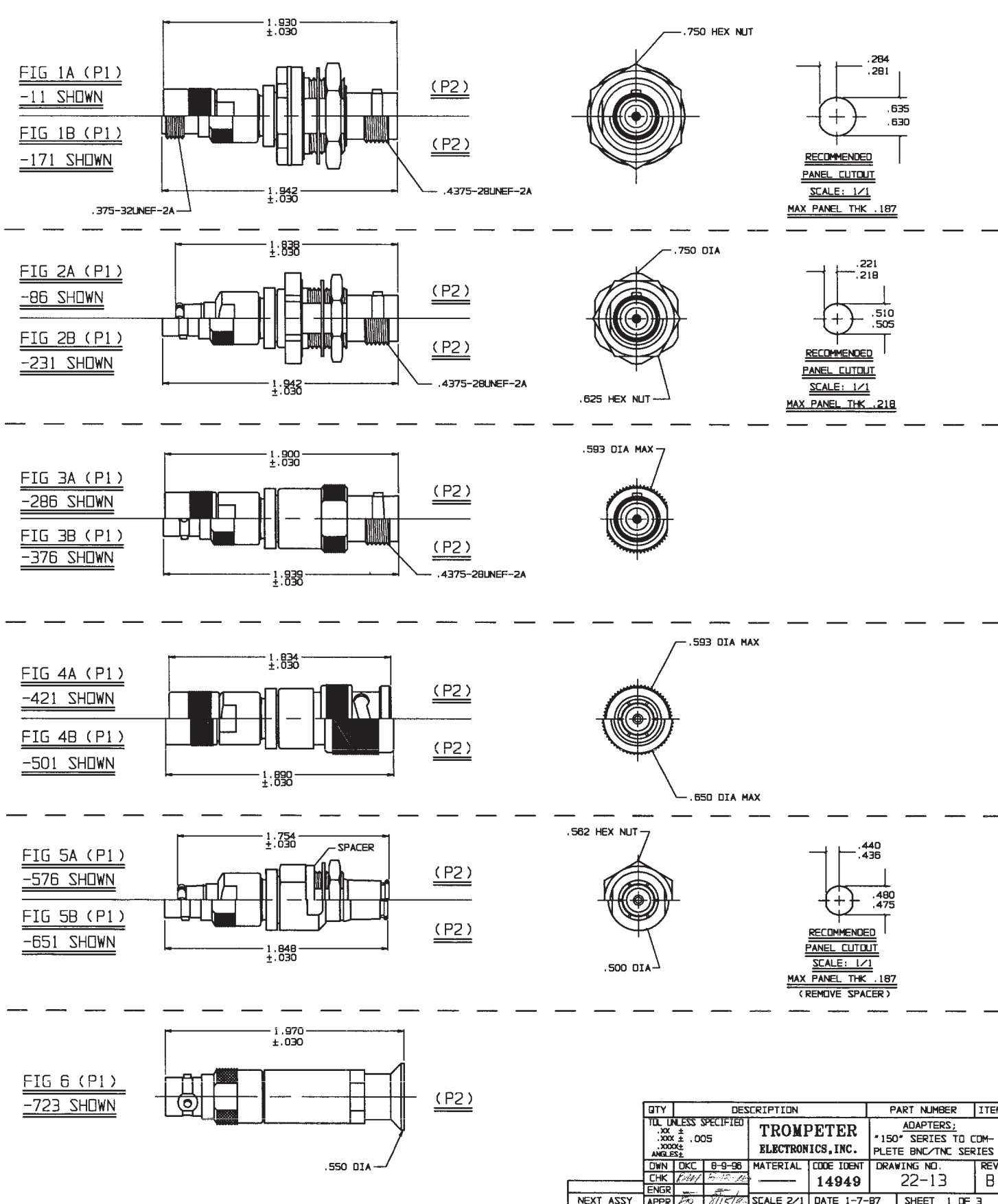


# RED INDICATES ORIGINAL

P2 CONN TYPE	FIG NO	P1 CONN TYPE																											
		PL155				PL155FL				PL3155				PL153				CJ150				CJ150FL				CJ3150			
		SCHEMATICS																											
		E1	E2	E3	E4	E5	E1	E2	E3	E4	E5	E1	E2	E3	E4	E5	E1	E2	E3	E4	E5	E1	E2	E3	E4	E5			
BJ26	1A	-1	-36	-71	-106	-141	-176	-211	-246	-281	-316	-351	-386	-421	-456	-491	-526	-561	-596	-631	-666	-701	-736	-771	.005	0.13			
UBJ26	1A	-36	-71	-106	-141	-176	-211	-246	-281	-316	-351	-386	-421	-456	-491	-526	-561	-596	-631	-666	-701	-736	-771	.030	0.76				
BJ29	2A	-71	-106	-141	-176	-211	-246	-281	-316	-351	-386	-421	-456	-491	-526	-561	-596	-631	-666	-701	-736	-771	.167	4.75					
UBJ29	2A	-106	-141	-176	-211	-246	-281	-316	-351	-386	-421	-456	-491	-526	-561	-596	-631	-666	-701	-736	-771	.218	5.54						
BJ46	1B	-141	-176	-211	-246	-281	-316	-351	-386	-421	-456	-491	-526	-561	-596	-631	-666	-701	-736	-771	.221	5.61							
UBJ46	1B	-176	-211	-246	-281	-316	-351	-386	-421	-456	-491	-526	-561	-596	-631	-666	-701	-736	-771	.291	7.14								
BJ49	2B	-211	-246	-281	-316	-351	-386	-421	-456	-491	-526	-561	-596	-631	-666	-701	-736	-771	.294	7.21									
UBJ49	2B	-246	-281	-316	-351	-386	-421	-456	-491	-526	-561	-596	-631	-666	-701	-736	-771	.436	11.07										
CJ20	3A	-281	-316	-351	-386	-421	-456	-491	-526	-561	-596	-631	-666	-701	-736	-771	.440	11.18											
UCJ20	3A	-316	-351	-386	-421	-456	-491	-526	-561	-596	-631	-666	-701	-736	-771	.475	12.06												
CJ40	3B	-351	-386	-421	-456	-491	-526	-561	-596	-631	-666	-701	-736	-771	.480	12.19													
UCJ40	3B	-386	-421	-456	-491	-526	-561	-596	-631	-666	-701	-736	-771	.500	12.70														
PL20	4A	-421	-456	-491	-526	-561	-596	-631	-666	-701	-736	-771	.505	12.83															
UPL20	4A	-456	-491	-526	-561	-596	-631	-666	-701	-736	-771	.510	12.95																
PL40	4B	-491	-526	-561	-596	-631	-666	-701	-736	-771	.550	13.97																	
UPL40	4B	-526	-561	-596	-631	-666	-701	-736	-771	.562	14.27																		
PL122	5A	-561	-596	-631	-666	-701	-736	-771	.593	15.06																			
UPL122	5A	-596	-631	-666	-701	-736	-771	.625	15.87																				
PL123	5B	-631	-666	-701	-736	-771	.630	16.00																					
UPL123	5B	-666	-701	-736	-771	.635	16.13																						
BJ120	6	-701	-736	-771	.650	16.51																							
UBJ120	6	-736	-771	.750	19.05																								
		-771	.754	44.55																									
		-771	1.834	46.58																									
		-771	1.848	46.68																									
		-771	1.862	46.94																									
		-771	1.876	47.00																									
		-771	1.890	48.02																									
		-771	1.904	48.23																									
		-771	1.918	48.33																									
		-771	1.932	49.33																									
		-771	1.946	49.33																									
		-771	1.960	50.04																									

INCH	MM
.005	0.13
.030	0.76
.167	4.75
.218	5.54
.221	5.61
.291	7.14
.294	7.21
.436	11.07
.440	11.18
.475	12.06
.480	12.19
.500	12.70
.505	12.83
.510	12.95
.550	13.97
.562	14.27
.593	15.06
.625	15.87
.630	16.00
.635	16.13
.650	16.51
.750	19.05
1.754	44.55
1.834	46.58
1.848	46.68
1.862	46.94
1.876	47.00
1.890	48.02
1.904	48.23
1.918	48.33
1.932	49.33
1.946	49.33
1.960	50.04

DWG SIZE D	REVISIONS			22-13	SH 1
	REV	ED	DESCRIPTION	DWN	APPROVED
	B	11/73/1	SH 3, ITEM 27 WAS P/N 3-0025-29; SEE ECD	DKC	DATE 8/16/78



- EXAMPLE OF COMPLETE MODEL NO:  
AD - PL155 - E1 - PL20
- EXAMPLE OF COMPLETE PART NO:  
22-13-1
- BETWEEN SERIES ADAPTER, \*150\* SERIES TO COMPLETE BNC/TNC SERIES
- FINISH: TFS-1A (NICKEL)
- ALL DIM ARE IN INCHES

QTY	DESCRIPTION	PART NUMBER	ITEM
TOL UNLESS SPECIFIED	TROMPETER ELECTRONICS, INC.		
.XXX ± .005	ADAPTERS; *150* SERIES TO COMPLETE BNC/TNC SERIES		
.00000±			
ANGLE±			
DWN	DKC	B-9-98	MATERIAL
CHK	P/1/1	14949	CODE IDENT
ENGR	P/1/1	22-13	DRAWING NO.
APPR	P/1/1	B	REV
NEXT ASSY	SCALE 2/1	DATE 1-7-87	SHEET 1 OF 3