

**PLEASE CHECK WWW.MOLEX.COM FOR LATEST PART INFORMATION**

**Part Number:** [0008500023](#)  
**Status:** **Active**  
**Overview:** [kk](#)  
**Description:** KK® Crimp Terminal 8818, 18-22 AWG, Bag, Brass Tin (Sn)

**Documents:**

[Drawing \(PDF\)](#) [RoHS Certificate of Compliance \(PDF\)](#)  
[Product Specification PS-08-50 \(PDF\)](#)

**General**

Product Family	Crimp Terminals
Series	<a href="#">8818</a>
Crimp Quality Equipment	Yes
Overview	<a href="#">kk</a>
Product Name	KK®

**Physical**

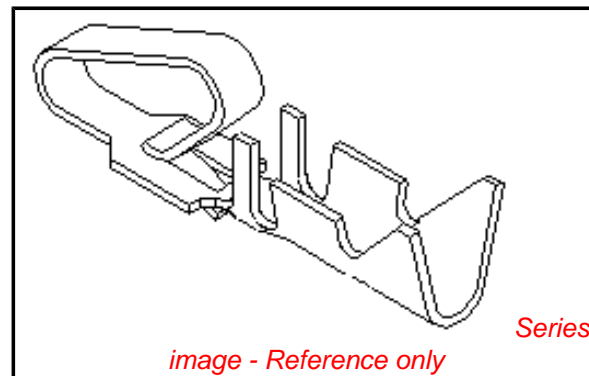
Gender	Female
Material - Metal	Brass
Material - Plating Mating	Tin
Material - Plating Termination	Tin
Packaging Type	Bag
Plating min: Mating (µin)	100
Plating min: Mating (µm)	2.50
Plating min: Termination (µin)	100
Plating min: Termination (µm)	2.50
Termination Interface: Style	Crimp or Compression
Wire Insulation Diameter	2.41mm (.095") max.
Wire Size AWG	18, 20, 22
Wire Size mm²	N/A

**Material Info**

Old Part Number	8818-(P909)L
-----------------	--------------

**Reference - Drawing Numbers**

Packaging Specification	PK-2759-001
Product Specification	PS-08-50
Sales Drawing	SD-8818



**EU RoHS**  
**ELV and RoHS**  
**Compliant**  
**REACH SVHC**  
 Not Reviewed  
**Halogen-Free**  
**Status**  
**Not Reviewed**

**China RoHS**



**Need more information on product environmental compliance?**

Email [productcompliance@molex.com](mailto:productcompliance@molex.com)  
 For a multiple part number RoHS Certificate of Compliance, [click here](#)

Please visit the [Contact Us](#) section for any non-product compliance questions.

**Search Parts in this Series**

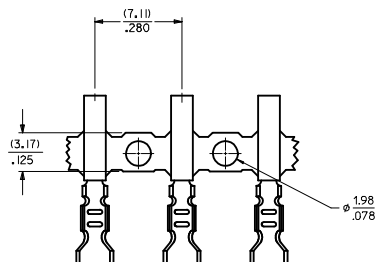
[8818Series](#)

**Application Tooling | [FAQ](#)**

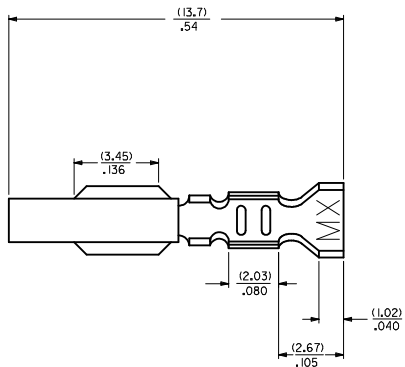
*Tooling specifications and manuals are found by selecting the products below. Crimp Height Specifications are then contained in the Application Tooling Specification document.*

**Global**

Description	Product #
Hand Crimper	0638117500



CHAIN FORM  
SCALE 5:1



LEGEND

88 IB \*\* \*(\*) \*

MATERIAL  
(.27)/.0106 THK.  
BLANK= BRASS  
A= PHOS BRONZE

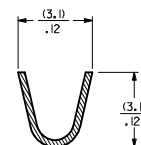
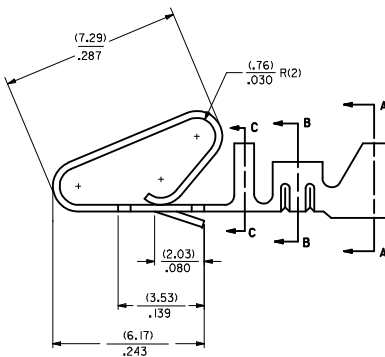
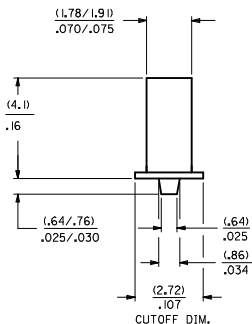
WINDING SPEC  
BLANK= PER ES-339-B  
L=LOOSE

PLATING  
SEE NOTE 2

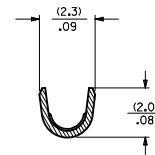
OPTION CODE  
BLANK=AS SHOWN

EDP NO.	ENGINEERING NO.
08-56-0187	88 IB-(50 I)
08-56-0188	88 IB-(50 IIL)
	88 IB-(555)
	88 IB-(555)IL
08-50-0008	88 IB-(P909)
08-50-0023	88 IB-(P909)IL
40-01-1181	88 IB-(999)
40-01-1182	88 IB-A(999)
08-50-0705	88 IB-A(102)
08-50-0706	88 IB-A(102)IL
08-65-0128	88 IB-A(555)
08-65-0129	88 IB-A(555)IL
08-52-0131	88 IB-A(P909)
08-52-0132	88 IB-A(P909)IL
08-58-0135	88 IB-A(550)
08-58-0136	88 IB-A(550)IL

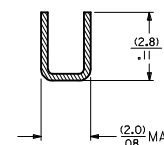
- NOTES:
- MATERIAL: SEE LEGEND
  - FINISH:
    - (P909) OVERALL HOT TIN DIP: (0.00254)/.000100 MIN.
    - (550) SELECT GOLD: (0.000381)/.000015 MIN.
    - OVERALL GOLD FLASH: (0.000051)/.000002 MIN.
    - OVERALL NICKEL UNDERPLATE: (0.000761)/.000030 MIN.
    - (555) SELECT GOLD: (0.000381)/.000015 MIN.
    - OVERALL NICKEL UNDERPLATE: (0.000761)/.000030 MIN.
  - PRODUCT SPECIFICATION: PS-08-50
  - PACKAGING SPECIFICATION: NONE
  - CRIMP ACCEPTS 18-22 GA. WIRE WITH (2.79)/.110 MAX. INSULATION DIA.
  - DIMENSIONS GIVEN ACROSS CENTERLINES ARE SYMMETRICAL ABOUT THOSE CENTERLINES WITHIN HALF THE TOTAL TOLERANCE.
  - TERMINAL FOR USE IN 41695 AND 6345 HOUSINGS.
  - THIS PART CONFORMS TO CLASS B REQUIREMENTS OF COSMETIC SPECIFICATION PS-45499-002.



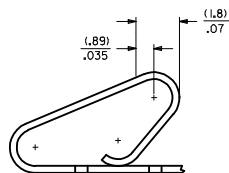
SECTION A-A



SECTION B-B



SECTION C-C



POST-PLATED SELECT GOLD LOCATION

<b>ADD CHAIN VIEW</b> IEC NO: UCP2009-2843 DRAWN BY: JJS CHYKDSOUSEK APPROV: FSW TH	QUALITY SYMBOLS ▽=0 ▽=0	GENERAL TOLERANCES (UNLESS SPECIFIED) mm INCH 4 PLACES ± .010 ± .010 3 PLACES ± .025 ± .014 2 PLACES ± 0.36 ± .010 1 PLACE ± 0.36 ± .010 ANGULAR ±1/2°	DIMENSION STYLE MM/IN DRAWN BY: JJS DATE: 02/02/193 CHECKED BY: PATEL DATE: 02/02/193 APPROVED BY: ENZ DATE: 02/02/193	SCALE --- DESIGN UNITS INCH THIRD ANGLE PROJECTION	TITLE CRIMP STYLE KK TYPE, .156 CENTERS W/ANTIFISHOOKING FEATURE MOLEX INCORPORATED
	DRAFT WHERE APPLICABLE MUST REMAIN WITHIN DIMENSIONS	MATERIAL NO. SEE CHART	DOCUMENT NO. SD-8818	SHEET NO. 1 OF 1	
	THIS DRAWING CONTAINS INFORMATION THAT IS PROPRIETARY TO MOLEX INCORPORATED AND SHOULD NOT BE USED WITHOUT WRITTEN PERMISSION				
	SIZE D				