

SPECIFICATIONS

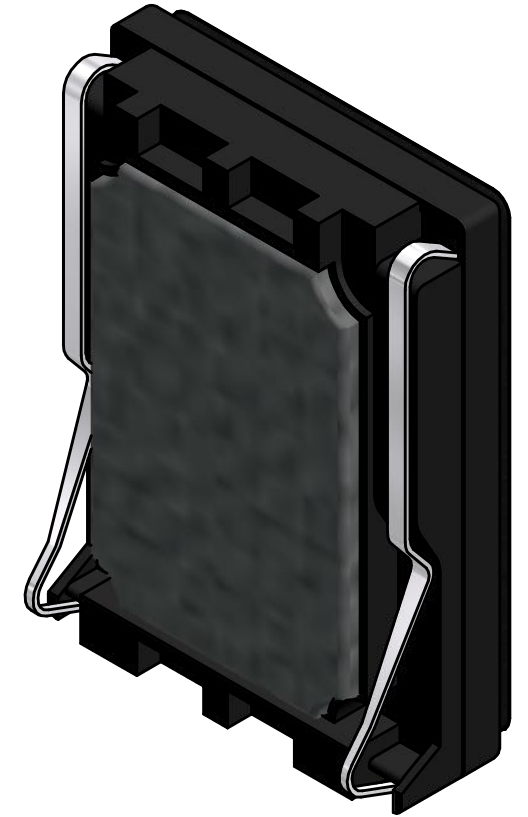
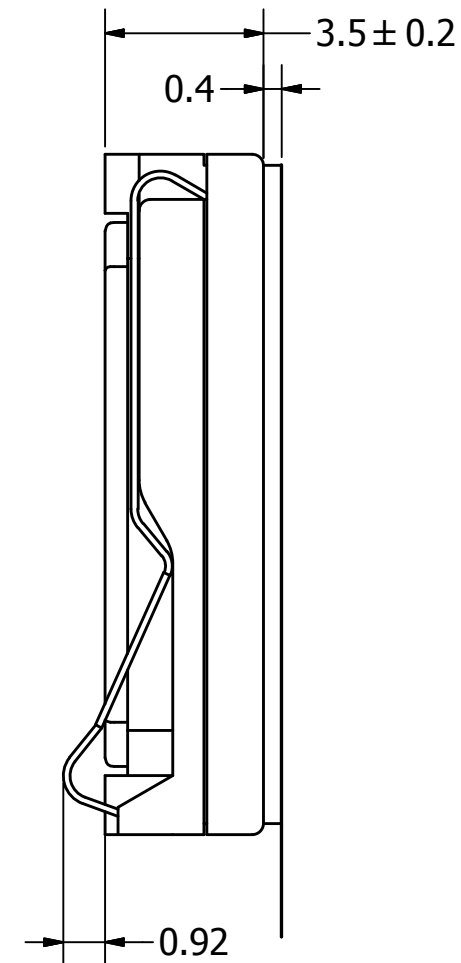
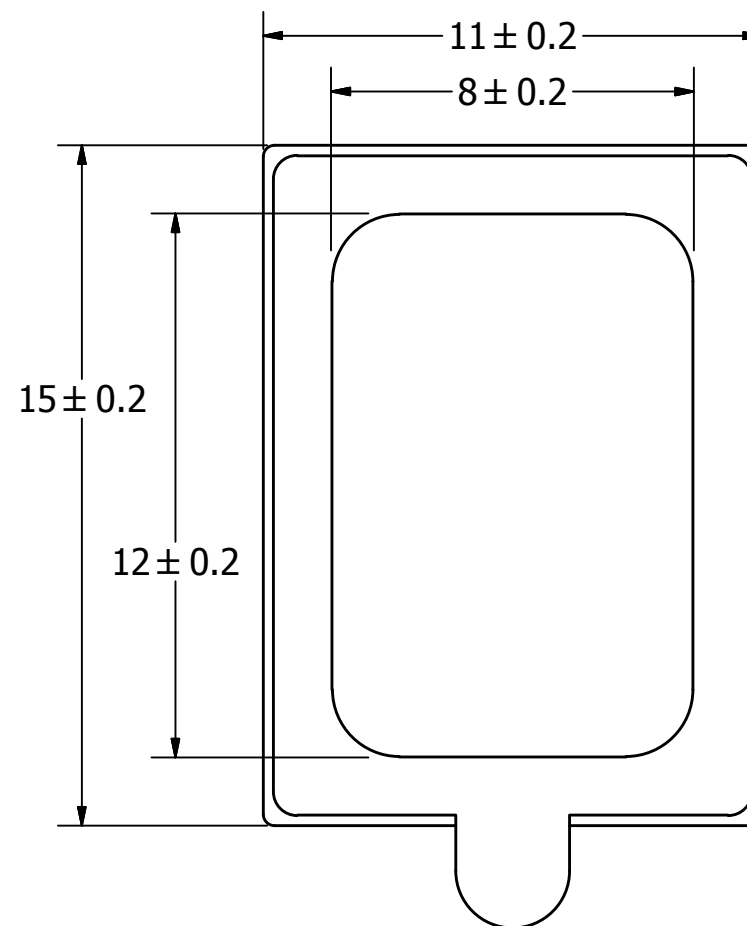
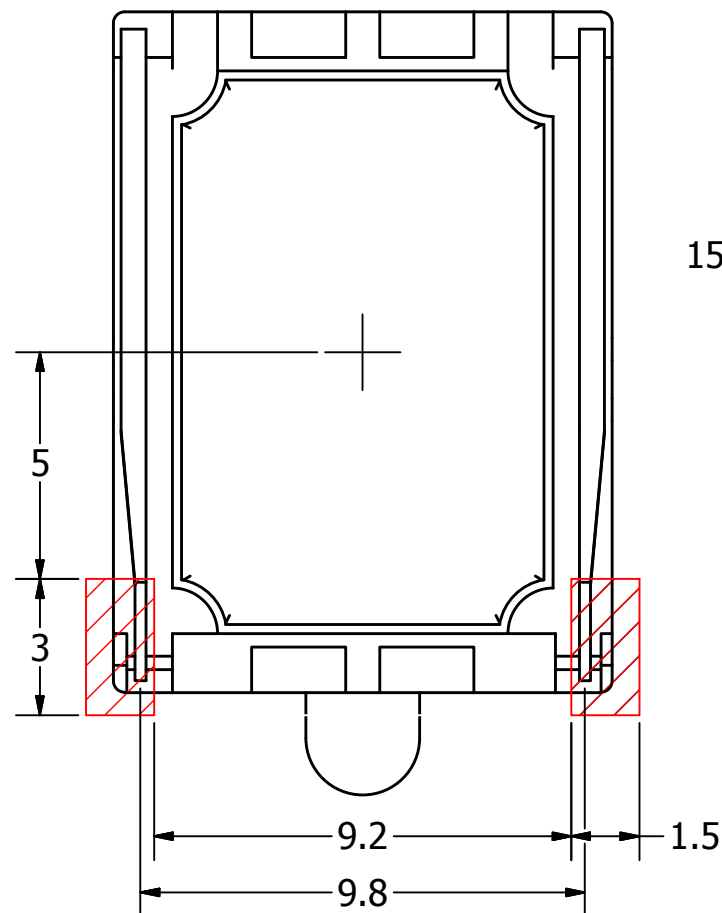
PARAMETERS	VALUES	UNITS
RATED INPUT POWER	0.5	W
MAX INPUT POWER	1.0	W
IMPEDANCE	8 ± 15%	OHM
OUTPUT SPL @ 0.1W/0.1M (AT 650-20kHz AVG.)	84 ± 3	dBA
DISTORTION (MAX.)	10%	-
RESONANT FREQUENCY	550 ± 20%	Hz
FREQUENCY RANGE	Fo ~ 20,000	Hz
HOUSING MATERIAL	ABS	-
CONE MATERIAL	ALUMINUM CAP MYLAR	-
MAGNET MATERIAL	NdFeB	-
OPERATING TEMPERATURE	-40 ~ +80	°C
WEIGHT	2	grams

THIS DOCUMENT CONTAINS DATA PROPRIETARY TO
PROJECTS UNLIMITED, INC. ANY USE OR
REPRODUCTION, IN ANY FORM, WITHOUT PRIOR
WRITTEN PERMISSION OF PROJECTS UNLIMITED,
INC. IS PROHIBITED.

©2003, Projects Unlimited Inc.


REVISION HISTORY	
------------------	--

LTR	DESCRIPTION	DATE	APPROVED
-	RELEASED FROM ENGINEERING	03/23/2015	
A	REVISED TO INVENTOR 3-D DRAWING TEMPLATE	4/10/2015	M.L.



NOTES:

1. ALL DIMENSIONS ARE IN MILLIMETERS.
2. SPECIFICATIONS SUBJECT TO CHANGE OR WITHDRAWAL WITHOUT NOTICE.
3. THIS PART IS RoHS 2011/65/EU COMPLIANT.

UNLESS OTHERWISE SPECIFIED: DIMENSIONS ARE IN MILLIMETERS, TOLERANCES ARE ±0.5 AND ANGLES ARE ±3°.	SIZE A3	Designed by	Date	Checked by	Date	Approved by	Date	Drawn Date
		J.D.	3/23/2015	M.L.	3/23/2015	B.R.	3/23/2015	4/10/2015
	 pui audio TM inc a projects unlimited company			AS01508AO-SC-R				
AS01508AO-SC-R.idw		Speaker					Edition -	Sheet 1 / 1