



Inner view
(2 : 1)

Technical specification:

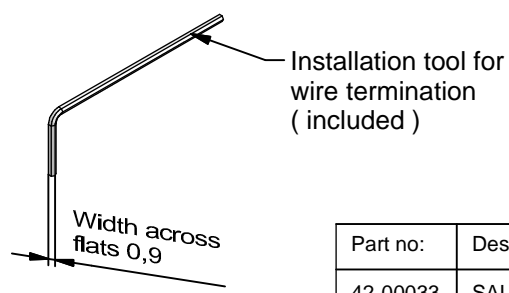
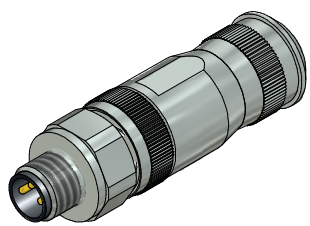
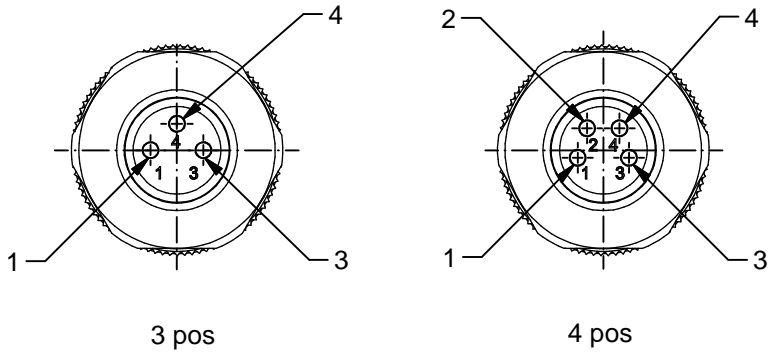
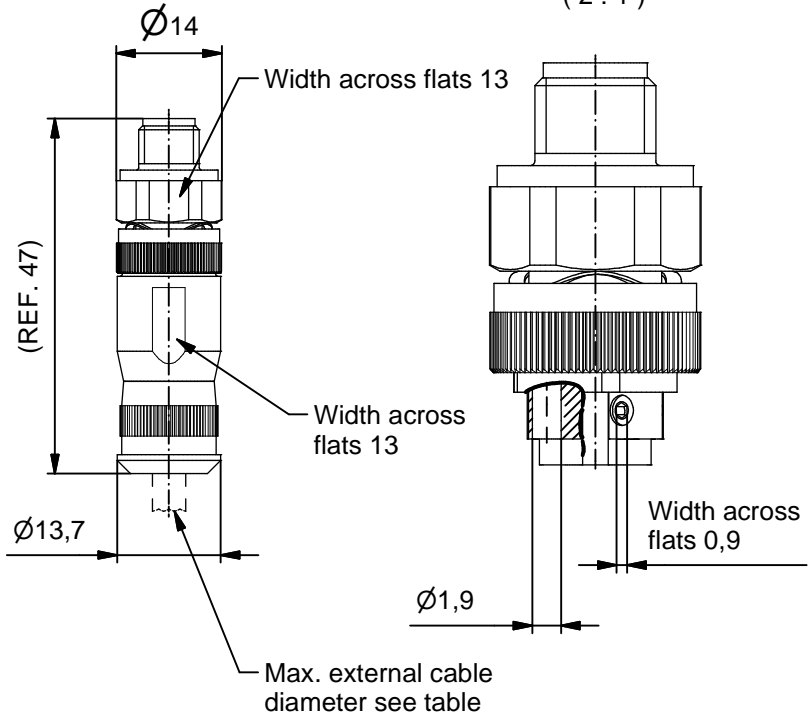
Rated voltage: IEC 61076-2-104	3pos 60 V	4pos 30 V
Current rating: IEC 61076-2-104	4 A at 40°C with 0,5mm ²	
Insulation resistance: IEC 60512	≥ 100 MΩ	
Pollution degree: IEC 60664-1	3/2	
Degree of protection: IEC 60529	IP 67, in mated condition	
Temperature range:	-30°C ... +85°C	
Mating cycles: IEC 60512-9a	≥ 100	
Wire cross section:	AWG 20 / max 0,5 mm ²	

Materials:

Contact:	CuZn
Contact plating:	Au over Ni in mating area
Contact carrier:	PA6, UL 94 V-0
Cable sealing:	NBR
Cable cage:	PA6 GF, UL 94 HB
O-Ring:	Silicone / NBR
Coupling screw:	CuZn, Ni
Housing:	CuZn, Ni

**Installation specification for locking screw
to counter connector:**

Recommended torque:	0,4 Nm
Conec installation tool:	Torque wrench: 36-000200 Insert across flats 13: 36-000220



Part no:	Description:	Pos:	Cable-Ø:
42-00033	SAL-8S-RSC3-S	3	5 - 6,5mm
42-00035	SAL-8S-RSC4-S	4	5 - 6,5mm

DO NOT ALTER CAD DRAWING BY HAND Directive 2002/95/EC RoHS compliant	Index: a 18.03.13 MG Ä4690 Design change of housing and nut	dim. in mm	title: Male connector M8x1, field attachable, axial, shielded, with screw termination	
		date name		
	drawn 01.10.12 Gitinow	CONEC ®		dwg no: 42K1A324
	appd. 05.10.12 Hüther			part no: see table
THIS DRAWING MAY NOT BE COPIED OR REPRODUCED IN ANY WAY, AND MAY NOT BE PASSED ON TO A THIRD PARTY WITHOUT WRITTEN PERMISSION. OWNERSHIP AND COPYRIGHT OF CONEC GmbH				

