

RES SQUARE lenses for LUXEON Rebel LEDs



- Designed & optimized for Luxeon Rebel series of LEDs
- Lens material optical grade PC with high UV and temperature resistance (120°C/248°F). Allows use of high current and temperature conditions
- Best available optical efficiency, up to 90%, with an extremely good cutoff of light
- Integrated holder. Fastening to heat sink with a PU foam adhesive tape of automotive grade
- We advise customer to ensure the suitability and sufficiency of the bond in the end product. For example, mechanical stress, vibration and holes on the surface of the circuit board weaken the strength of the tape.
- Please check fastening details from this link:
(http://www.ledil.com/datasheets/DataSheet_TAPE.pdf)
- Compact dimensions 21.6 x 21.6 mm. Square form enables easy build of matrix without any gaps between lenses.

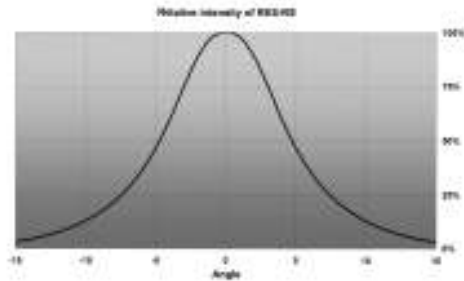
LENS TYPES

NAME	ORDERING CODE	FWHM Angle
RE SQUARE REAL SPOT	FA10856_RES-RS	±4°
RE SQUARE SMOOTH SPOT	FA10853_RES-SS	±6°
RE SQUARE DIFFUSER	FA10852_RES-D	±8°
RE SQUARE MEDIUM	FA10851_RES-M	±15°
RE SQUARE WIDE	FA10855_RES-W	±17°
RE SQUARE WIDE-V6	FA11675_RES-W-V6	±27°
RE SQUARE OVAL	FA10854_RES-O	±6° x ±23°
RE SQUARE OVAL turned 90°	4FA11157_RES-O-90	±6° x ±23°

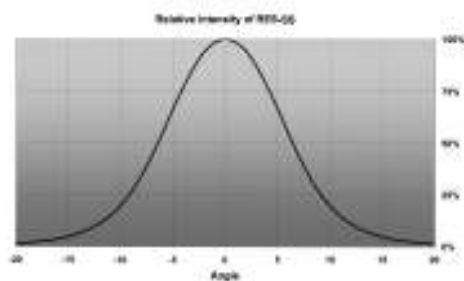
© Ledil Oy – PRELIMINARY - Subject to change without prior notice

MEASUREMENTS

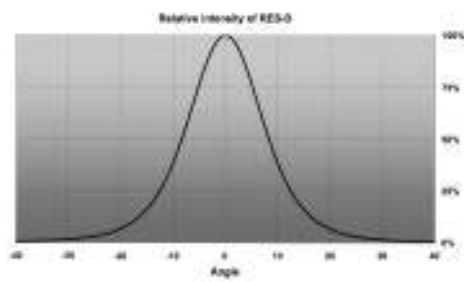
RES-RS



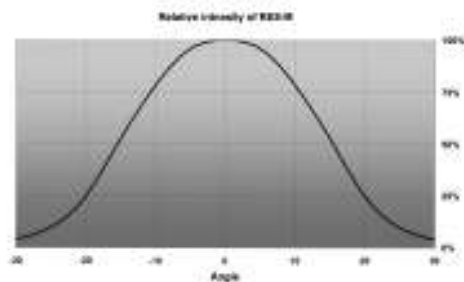
RES-SS



RES-D

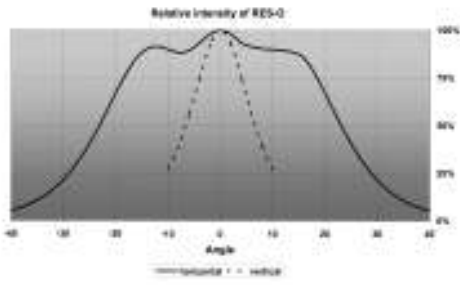


RES-M

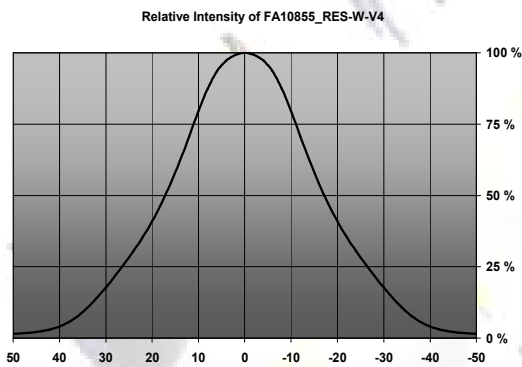


© Ledil Oy – PRELIMINARY - Subject to change without prior notice

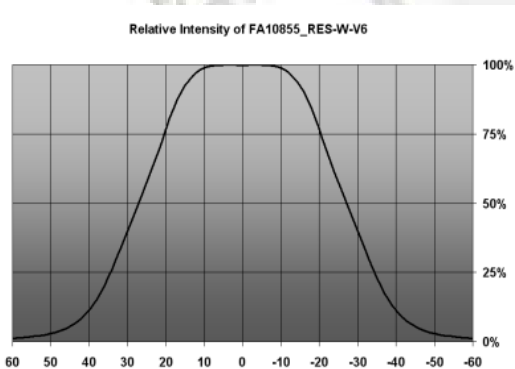
RES-O

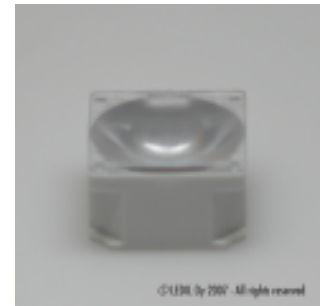
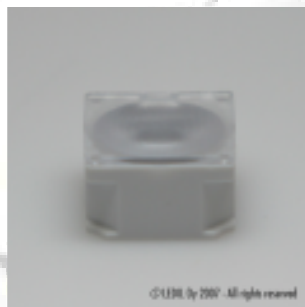
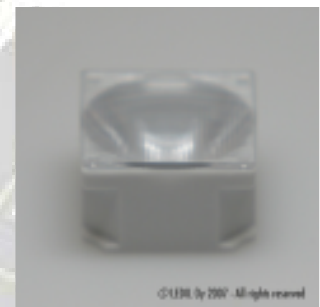


RES-W-V4

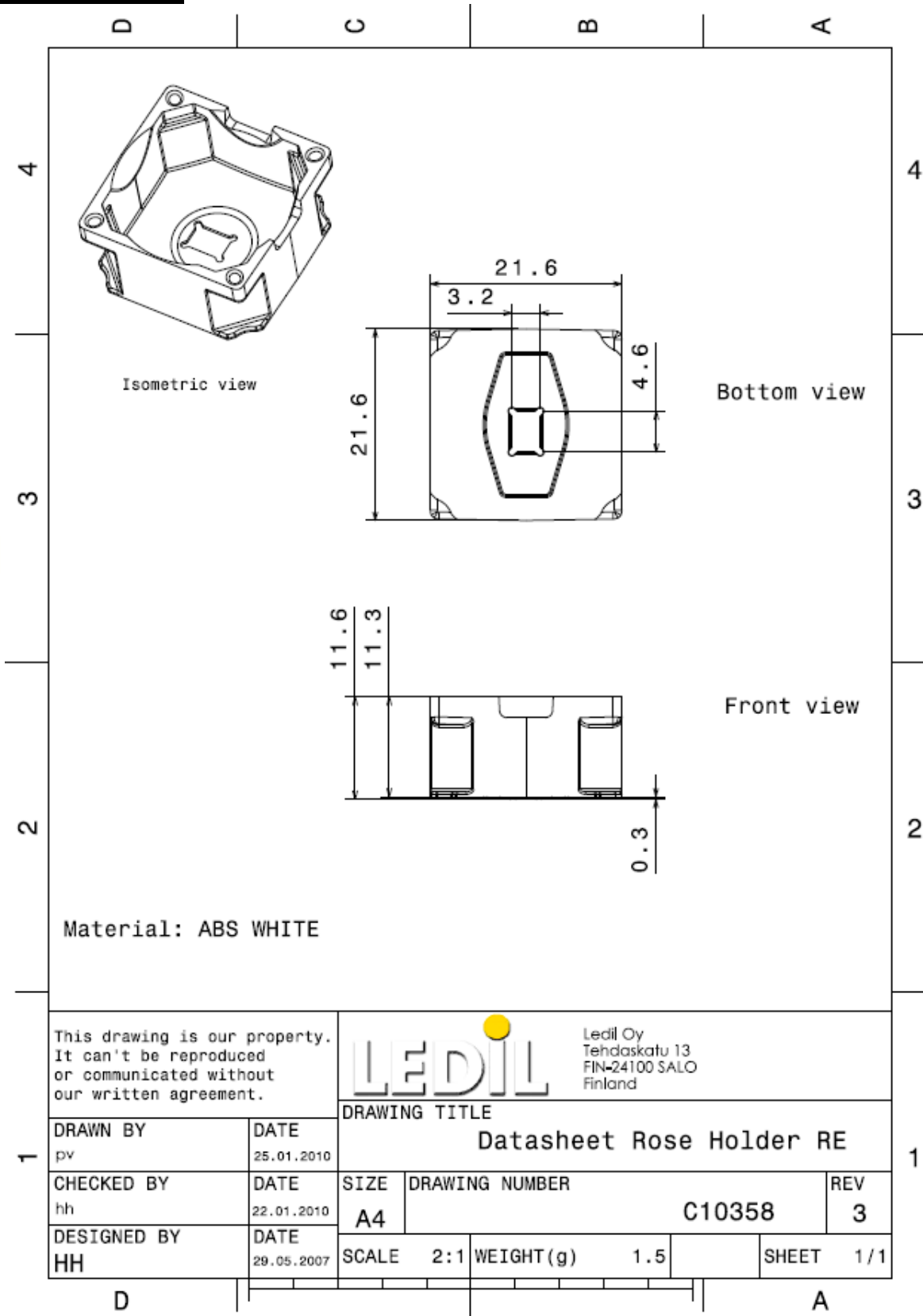


RES-W-V6



PHOTOS**RES-RS****RES-SS****RES-D****RES-M****RES-W****RES-O**

DRAWING



© Ledil Oy - PRELIMINARY - Subject to change without prior notice