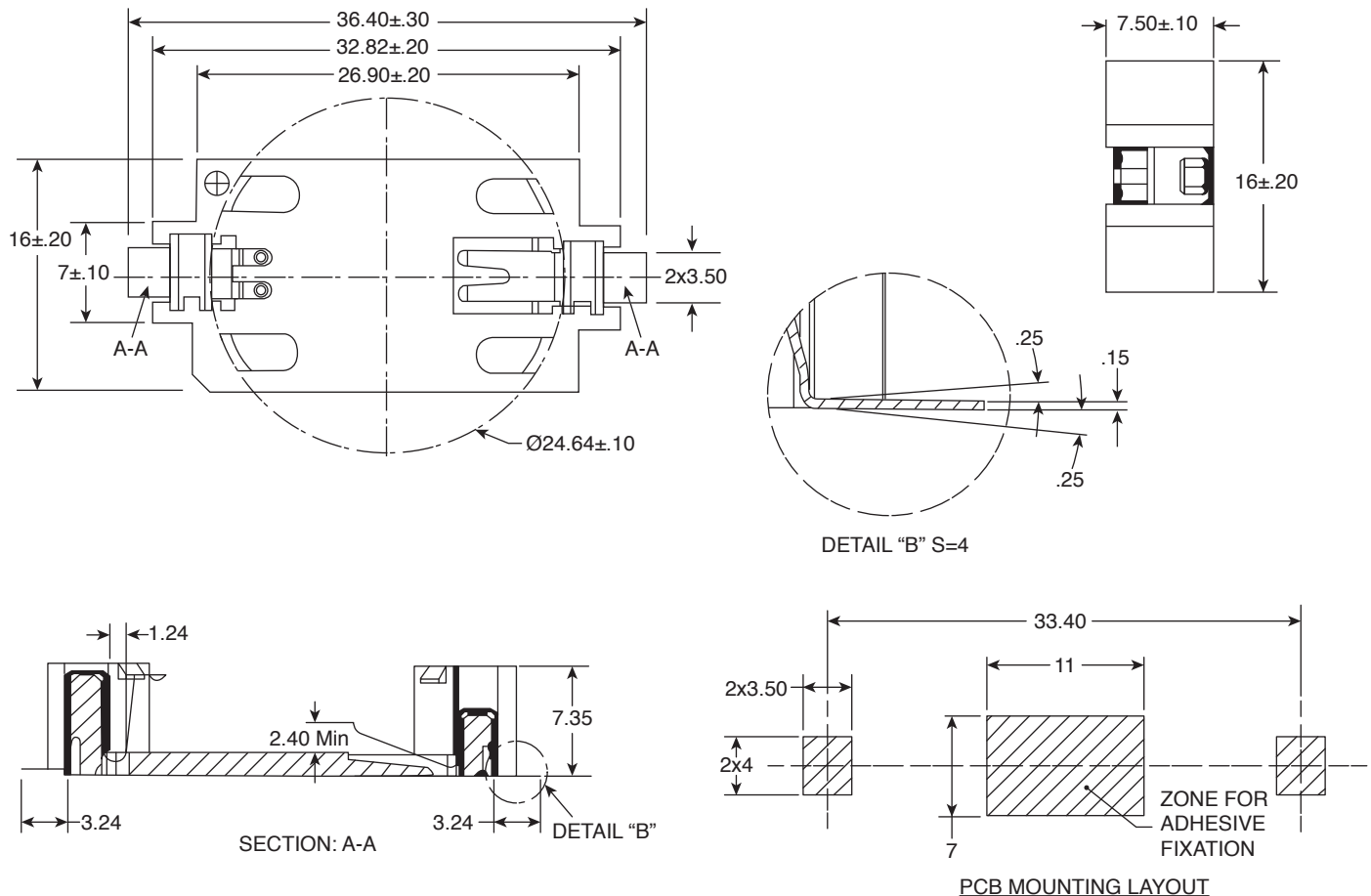


DIMENSIONS: mm



SPECIFICATIONS

Current Rating:	2A (AC/DC)
Voltage Rating:	500V (AC/DC)
Contact Resistance:	30m Ω
Insulation Resistance:	500M Ω
Temp. Range:	-55 °C to +85 °C
Battery Size:	CR2450
RoHS Compliant	