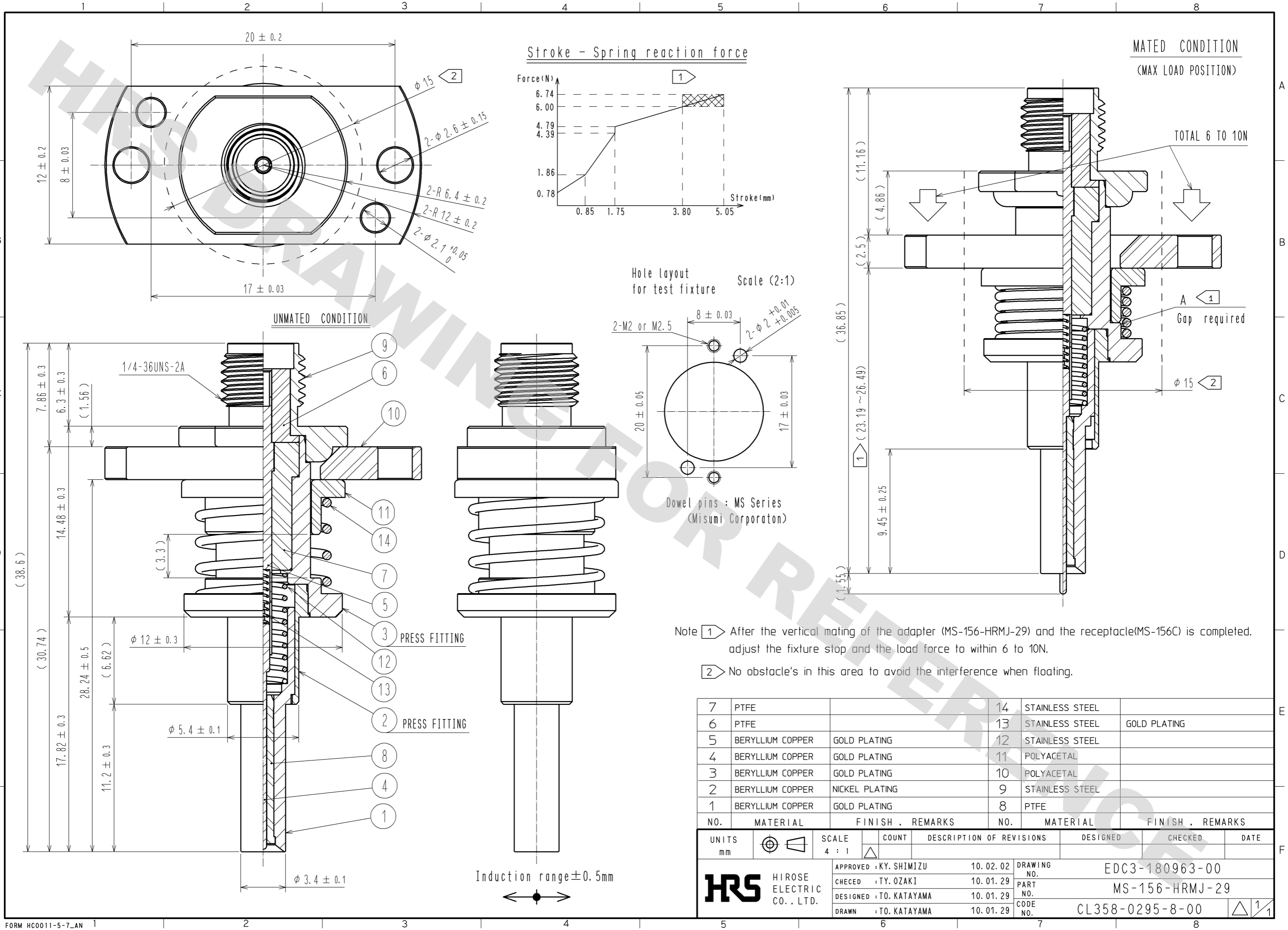


DRAWING FOR REFERENCE: This is subject to change without notice
08/11/2012



Note 1 After the vertical mating of the adapter (MS-156-HRMJ-29) and the receptacle (MS-156C) is completed, adjust the fixture stop and the load force to within 6 to 10N.

Note 2 No obstacle's in this area to avoid the interference when floating.

NO.	MATERIAL	FINISH	REMARKS	NO.	MATERIAL	FINISH	REMARKS
7	PTFE			14	STAINLESS STEEL		
6	PTFE			13	STAINLESS STEEL	GOLD PLATING	
5	BERYLLIUM COPPER	GOLD PLATING		12	STAINLESS STEEL		
4	BERYLLIUM COPPER	GOLD PLATING		11	POLYACETAL		
3	BERYLLIUM COPPER	GOLD PLATING		10	POLYACETAL		
2	BERYLLIUM COPPER	NICKEL PLATING		9	STAINLESS STEEL		
1	BERYLLIUM COPPER	GOLD PLATING		8	PTFE		

UNITS	SCALE	COUNT	DESCRIPTION OF REVISIONS	DESIGNED	CHECKED	DATE
mm	4 : 1	△				
APPROVED : KY. SHIMIZU			10.02.02	DRAWING NO. EDC3-180963-00		
CHECKED : TY. OZAKI			10.01.29	PART NO. MS-156-HRMJ-29		
DESIGNED : TO. KATAYAMA			10.01.29	CODE NO. CL358-0295-8-00		
DRAWN : TO. KATAYAMA			10.01.29	1/1		