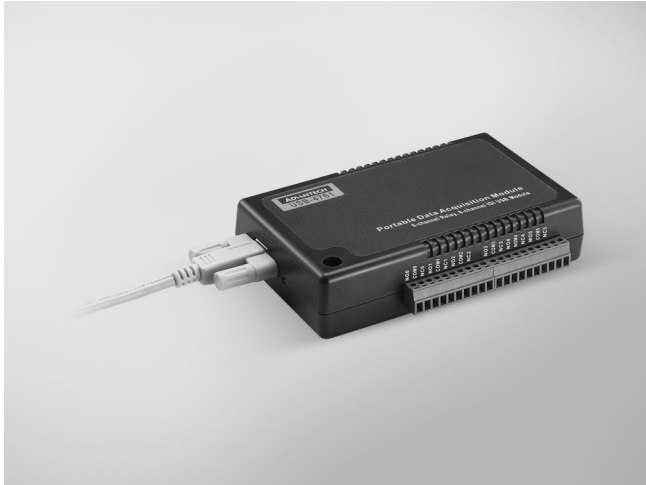


# USB-4761

## 8-ch Relay and 8-ch Isolated Digital Input USB Module



CE FCC RoHS

### Features

- Compatible with USB 1.1/2.0
- Portable
- Bus-powered
- 8 relay output channels and 8 isolated digital input channels
- LED indicators to show activated relays
- 8 Form C type relay output channels
- High-voltage isolation on input channels (2,500 V<sub>DC</sub>)
- High ESD protection (2,000 V)
- Wide input range (5 ~ 30 V<sub>DC</sub>)
- Interrupt handling capability
- Detachable screw terminal on modules
- Suitable for DIN-rail mounting
- One lockable USB cable for secure connection included

### Introduction

The USB-4761 is a relay actuator and isolated digital input module with USB interface. It provides 8 optically-isolated digital inputs with isolation protection of 2,500 V<sub>DC</sub> for collecting digital signals in noisy environments and 8 relay actuators for serving as on/off control devices or small power switches. For easy monitoring, each relay is equipped with one green LED to show its on/off status.

### Rugged Protection

The USB-4761's digital input channels feature a rugged isolation protection for industrial, lab and machinery automation applications. They durably withstand voltages up to 2,500 V<sub>DC</sub>, protecting your host system from any incidental harms. If connected to an external input source with surge-protection, the USB-4761 can offer up to a maximum of 2,000 V ESD (Electrostatic Discharge) protection.

### Specifications

#### Isolated Digital Input

- **Channels** 8
- **Input Voltage** Logic 0: 2 V max.  
Logic 1: 5 V min. (30 V max.)
- **Isolation Protection** 2,500 V<sub>DC</sub>
- **Opto-Isolator Response** 25  $\mu$ s

#### Relay Output

- **Contact Rating** 0.25 A @ 250 V<sub>AC</sub>, 2 A @ 30 V<sub>DC</sub>
- **Max. Switching Power** 62.5 VA, 60 W
- **Max. Switching Voltage** 250 V<sub>AC</sub>, 220 V<sub>DC</sub>
- **Max. Switching Current** 5 A
- **Min. Switching Voltage** 100  $\mu$ V
- **Operate/Release Time** typ. 3 / 2 ms, max. 5 / 4 ms
- **Resistance** Contact: 50 m $\Omega$  max. @ 10 mA/20 mV  
Insulation: 1 G $\Omega$  min. @ 500 V<sub>DC</sub>
- **Life Expectancy (Electrical)** 5 x 10<sup>7</sup> cycles typ. @ 10 mA/12 V  
2 x 10<sup>5</sup> cycles typ. @ 2000 mA/30 V

#### General

- **Bus Type** USB 1.1/2.0
- **I/O Connector** Onboard screw terminal
- **Dimensions (L x W x H)** 132 x 80 x 32 mm (5.2" x 3.15" x 1.26")
- **Power Consumption** Typical: 5 V @ 60 mA  
Max.: 5 V @ 400 mA
- **Operating Temperature** 0 ~ 60°C (32 ~ 140°F)
- **Storage Temperature** -20 ~ 70°C (-4 ~ 158°F)
- **Storage Humidity** 5 ~ 95 % RH, non-condensing

### Ordering Information

- **USB-4761-AE** 8-ch Relay/Isolated Digital Input USB Module

#### Accessories

- **1960004544** Wallmount Bracket
- **1960005788** VESA Mount Bracket