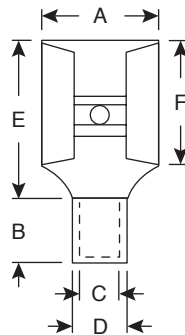
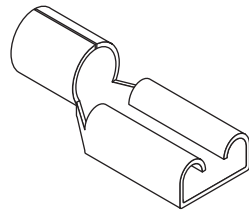


Terminals

159-1224, 159-1640, 159-1641,
159-1642, 159-2237, 159-2239A

KOBICONN

Terminals



SPECIFICATIONS

| | |
|---------------------------|---------------------------|
| Type: | Non-Insulated Disconnects |
| Maximum Voltage: | 300V @ 75°C |
| Terminal Material: | Brass |

| MOUSER STOCK NO. | Wire Range (AWG) | Max. Electric Current (A) | NEMA Tab | Dimensions: In. | | | | | | Material Thickness |
|------------------|------------------|---------------------------|-------------|-----------------|------|------|------|------|------|--------------------|
| | | | | A | B | C | D | E | F | |
| 159-1224 | 12-10 | 24 | .032 x .250 | .291 | .236 | .134 | .177 | .669 | .311 | .016 |
| 159-1640 | 16-14 | 15 | .020 x .110 | .150 | .167 | .091 | .130 | .551 | .252 | .012 |
| 159-1641 | 16-14 | 15 | .020 x .187 | .220 | .197 | .091 | .130 | .551 | .256 | .014 |
| 159-1642 | 16-14 | 15 | .020 x .205 | .256 | .197 | .091 | .130 | .622 | .248 | .014 |
| 159-2237 | 22-16 | 10 | .020 x .187 | .220 | .197 | .067 | .106 | .551 | .256 | .014 |
| 159-2239A | 22-16 | 10 | .020 x .205 | .258 | .197 | .067 | .106 | .622 | .248 | .014 |

159-1224, 159-1640, 159-1641, 159-1642, 159-2237, 159-2239A

Date Last Revised: 06-23-05

Available from Mouser Electronics
1-800-346-6873
www.mouser.com

KC-300718