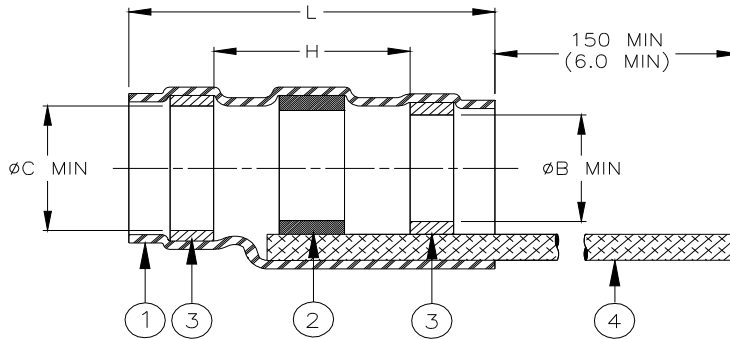


SPECIFICATION CONTROL DRAWING



| Product Revision | | Component Dimensions | | | | | Shall Accommodate Cable with Dimensions | | |
|------------------|---|----------------------|---------------------|-----------------|-----------------|-----------------|---|-----------------|-----------------|
| Product Name | | Ident. Code | L±1.75 (L±0.070) | øB min | øC min | H min | øE max | øF min | øD max |
| S03-01-R | D | S0301R | 16.50 (0.650) | 1.90 (0.070) | 2.65 (0.105) | 8.25 (0.325) | 2.65 (0.105) | 0.90 (0.035) | 1.90 (0.075) |
| S03-02-R | D | S0302R | 16.50 (0.650) | 2.65 (0.105) | 3.68 (0.145) | 8.25 (0.325) | 3.68 (0.140) | 1.40 (0.055) | 2.65 (0.105) |
| S03-03-R | D | S0303R | 16.50 (0.650) | 4.30 (0.170) | 5.08 (0.200) | 8.25 (0.325) | 5.08 (0.200) | 2.15 (0.085) | 4.30 (0.170) |
| S03-04-R | D | S0304R | 19.10 (0.750) | 5.95 (0.235) | 6.45 (0.255) | 8.25 (0.325) | 6.45 (0.255) | 3.30 (0.130) | 5.95 (0.235) |
| S03-05-R | D | S0305R | 19.10 (0.750) | 7.00 (0.275) | 7.60 (0.300) | 8.25 (0.325) | 7.60 (0.300) | 4.30 (0.170) | 7.00 (0.275) |

MATERIALS

- INSULATION SLEEVE: Heat-shrinkable, transparent blue, radiation cross-linked modified polyvinylidene fluoride.
- SOLDER PREFORM WITH FLUX AND THERMAL INDICATOR
 SOLDER: TYPE Sn63 per ANSI-J-STD-006.
 FLUX: TYPE ROL1 per ANSI-J-STD-004.
 THERMAL INDICATOR: Color change violet to colorless.
- MELTABLE RINGS: Stabilized thermoplastic. Color: blue.
- PRE-INSTALLED BRAID: Tin-plated copper strands. CMA 640.

APPLICATION

- These parts are designed to provide an environment protected shield termination on cables, rated for 125°C minimum, meeting the dimensional criteria listed and having tin or silver-plated shields and insulation compatible with the insert material.
For compatible insulations, see MIL-S-83519/2 or consult TE Connectivity/Raychem.
- When installed per TE Connectivity /Raychem process standard RCPS-100-70, assemblies will meet those requirements of TE Connectivity /Raychem Specification RT-1404 and MIL-S-83519/2, which do not require electrical testing while parts are immersed in water.
- Temperature range: -55°C to +150°C.
- Parts shall be marked with identification code per table.

For best results, prepare the cable as shown:



SolderSleeve is a trademark of TE Connectivity.

| | | | | | | | | | |
|--|--|---|----------------------|--|--------------------------------------|---|--------------------------|------------------|--------------------|
| | | TE Connectivity 300 Constitution Drive, Menlo Park, CA. 94025, U.S.A. | | | | TITLE: SOLDERSLEEVE DEVICES SHIELD TERMINATION WITH PRE-INSTALLED BRAID | | | |
| Unless otherwise specified dimensions are in millimeters. [Inches dimensions are shown in brackets] | | | | | DOCUMENT NO.: S03-01/-05-R | | | | |
| TOLERANCES: 0.00 N/A 0.0 N/A 0 N/A | | ANGLES: N/A ROUGHNESS IN MICRON | | TE Connectivity reserves the right to amend this drawing at any time. Users should evaluate the suitability of the product for their application. | | | PROD. REV.: SEE TABLE | DOC. ISSUE: 5 | DATE: 15-Apr-11 |
| DRAWN BY: M. FORONDA | | CAGE CODE: 06090 | REPLACES: D982098 | DCR NUMBER: D030251 | SCALE: None | | SIZE: A | SHEET: 1 of 1 | |

Print Date: 9-May-11 If this document is printed it becomes uncontrolled. Check for the latest revision.

© 2011 Tyco Electronics Corporation, a TE Connectivity Ltd. Company. All Rights Reserved.