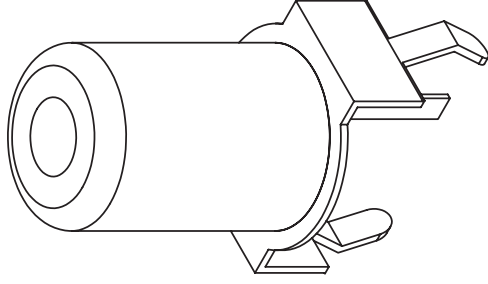
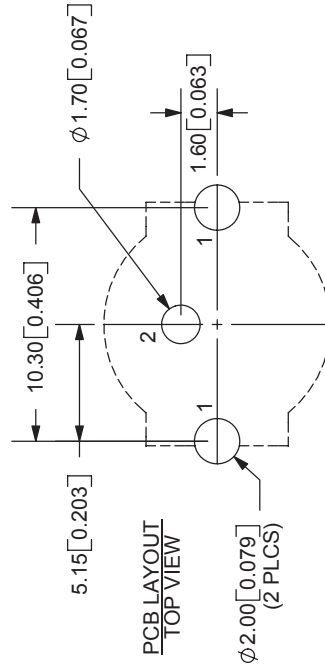
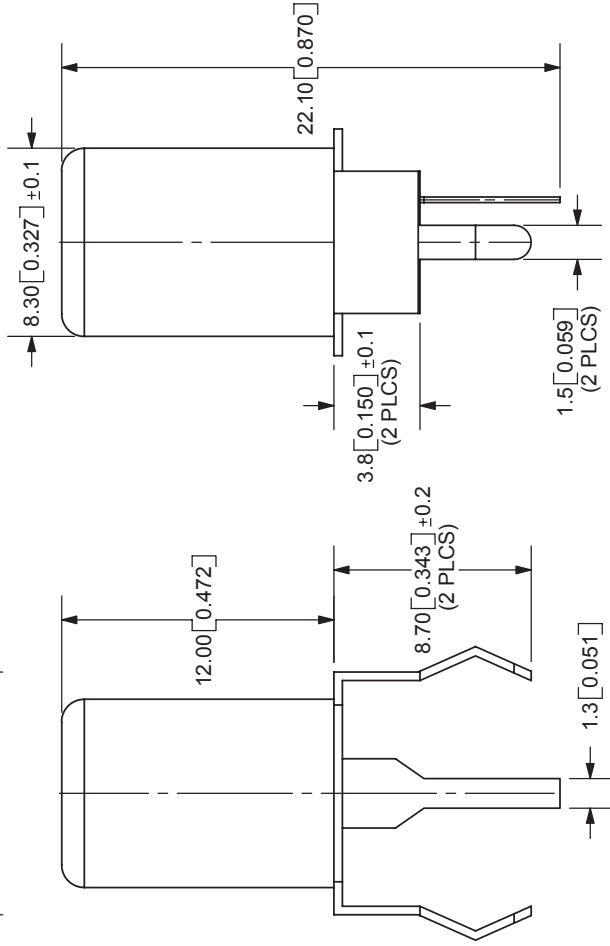
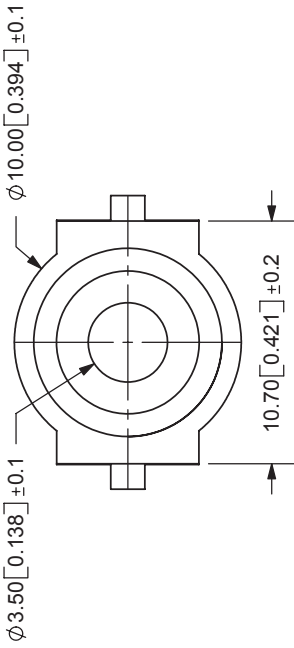


REV.	DESCRIPTION	DATE
A	NEW DRAWING	1/10/2006



SPECIFICATIONS:
 CONTACT RESISTANCE: 30m OHMS MAX
 INSULATION RESISTANCE: 100M OHMS MIN: 500V DC
 VOLTAGE WITHSTAND: 500V AC R.M.S. FOR 1 MINUTE
 LIFE: 5,000 CYCLES
 OPERATING TEMP: -20° ~ +85°C

TOLERANCE:
 ±0.3mm UNLESS OTHERWISE
 SPECIFIED



9615 SW Allen Blvd., Ste. 103
 Beaverton, OR 97005
 Phone: 503-643-4899
 800-275-4899
 Fax: 503-372-1266
 Website: www.cui.com

PART NO.	COLOR
RCJ-021	Black
RCJ-022	Red
RCJ-023	White
RCJ-024	Yellow
RCJ-025	Blue
RCJ-026	Green
RCJ-027	Orange

TITLE: RCA Jack, Metal, Right Angle, PCB Mount	REV: A
PART NO: RCJ-02X	UNITS: MM [INCHES]
DRAWN BY: ZRJ	APPROVED BY:
	SCALE: 3:1

MATERIAL	PLATING
Brass	Nickel
Iron	Tin
Brass	Tin
PBT	see color index

SHELL	RCJ-02X
MOUNTING BRACKET	2
PIN	1
INSULATOR	

MODEL NO.	RCJ-02X
SCHEMATIC	

PC FILE NAME: RCJ-02X

COPYRIGHT 2005 BY CUI INC.