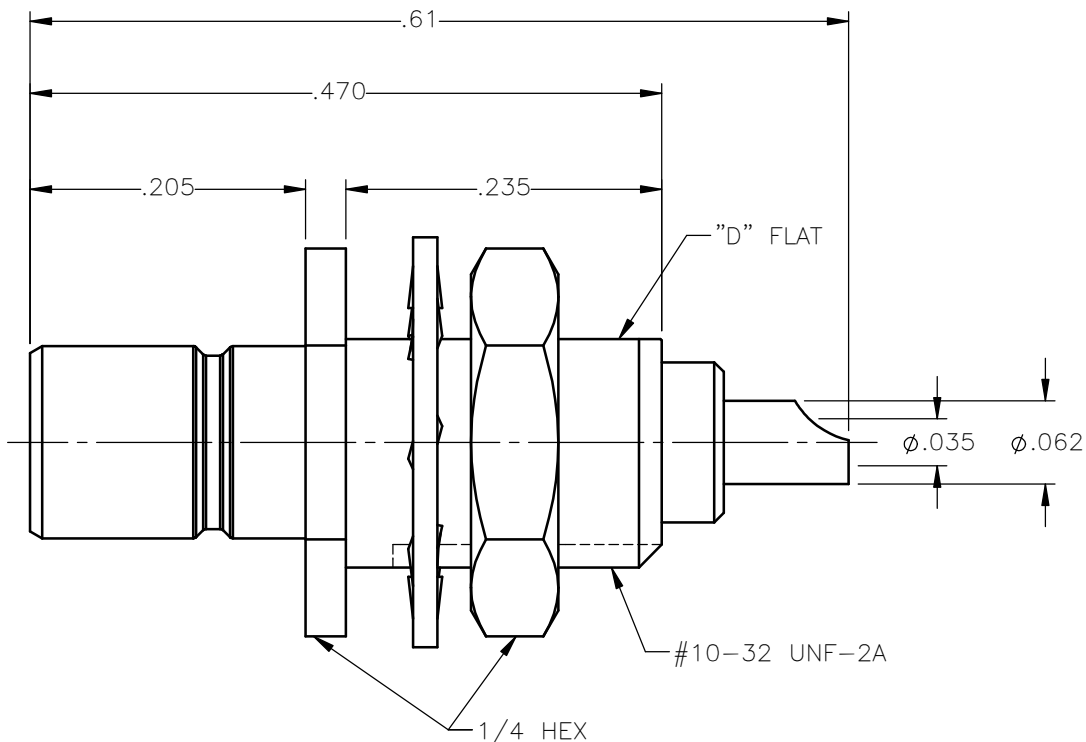


REVISIONS			
REV.	DESCRIPTION	DATE	APPROVED
A	INITIAL RELEASE	08/30/11	D.N.





NOTES: CONFORMS TO M39012/71-0002

#### MATERIALS:

1. INSULATOR = VIRGIN WHITE TEFLON PER ASTM D1710, GRADE 1, TYPE I, CLASS "B".
2. LOCKWASHER = PHOSPHOR BRONZE PER ASTM B139, COPPER ALLOY C53400, TEMPER H04.
3. ALL OTHER METAL PARTS = BRASS PER ASTM B16, ALLOY C36000, TEMPER H02.

#### FINISHES:

1. BODY = GOLD PLATE PER MIL-G-45204, TYPE II, CLASS 1, GRADE C, OVER .00010 TO .00020 COPPER STRIKE PER MIL-C-14550.
2. CONTACT = GOLD PLATE PER MIL-G-45204, TYPE II, CLASS 1, GRADE C, OVER .00010 TO .00020 STRESS FREE SULFAMATE NICKEL PER QQ-N-290.
3. NUT & LOCKWASHER = GOLD PLATE PER MIL-G-45204, TYPE II, CLASS 0, GRADE C, OVER .00010 TO .00020 COPPER STRIKE PER MIL-C-14550.

UNLESS OTHERWISE SPECIFIED DIMENSIONS ARE IN INCHES TOLERANCES ON		DWN:	DATE	 <b>Property of Radiall</b> This document cannot be reproduced or communicated to a third party without prior written permission of RADIALL.	
		D.N.	08/30/11		
DECIMAL	ANGLE	CHKD:	DATE	<b>SMB STRAIGHT MALE FRONT MOUNT BULKHEAD JACK SOLDER POT RECEPTACLE</b>	
		J.S.	08/30/11		
		APVD:	DATE	SIZE <b>A</b>	FSCM NO. <b>19505</b>
		J.M.	08/30/11		
REFERENCE:		MATERIALS & FINISHES:		DWG NO. <b>2019-1511-999</b>	REV <b>A</b>
ORIGINATED: D.N. DATE: 08/30/11		SEE NOTES			
		SCALE 7:1		THIRD ANGLE PROJECTION	SHEET 1 OF 1

2019-1511-999