

LAURA SERIES FOR NICHIA 119 / 219 LEDs



- Lens material optical grade PMMA with high UV and temperature resistance (105°C/220°F). Allows use of high current and temperature conditions
- Best available optical efficiency, up to 90%, with an extremely good cutoff of light
- Integrated holder. Fastening to heat sink with a PU foam adhesive tape of automotive grade
- Please check fastening details from this link:
(http://www.ledil.com/datasheets/DataSheet_TAPE.pdf)
- Compact dimensions 21.6 x 21.6 mm. Square form enables easy build of matrix without any gaps between lenses.

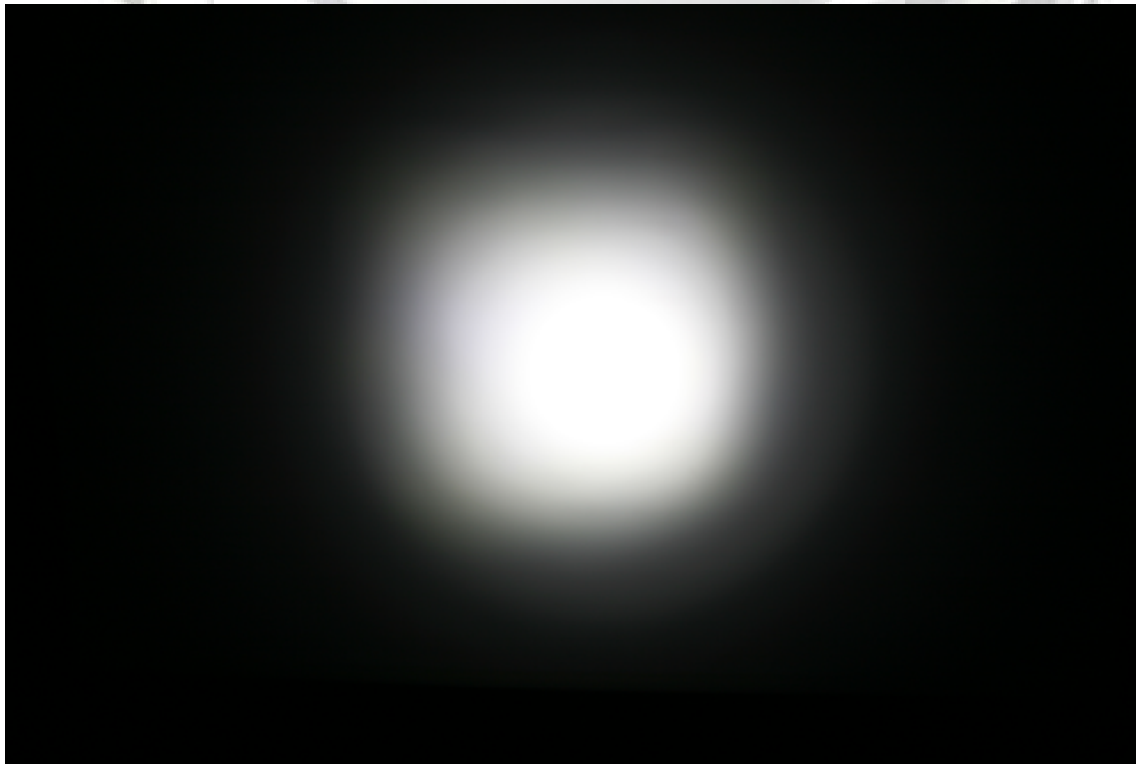
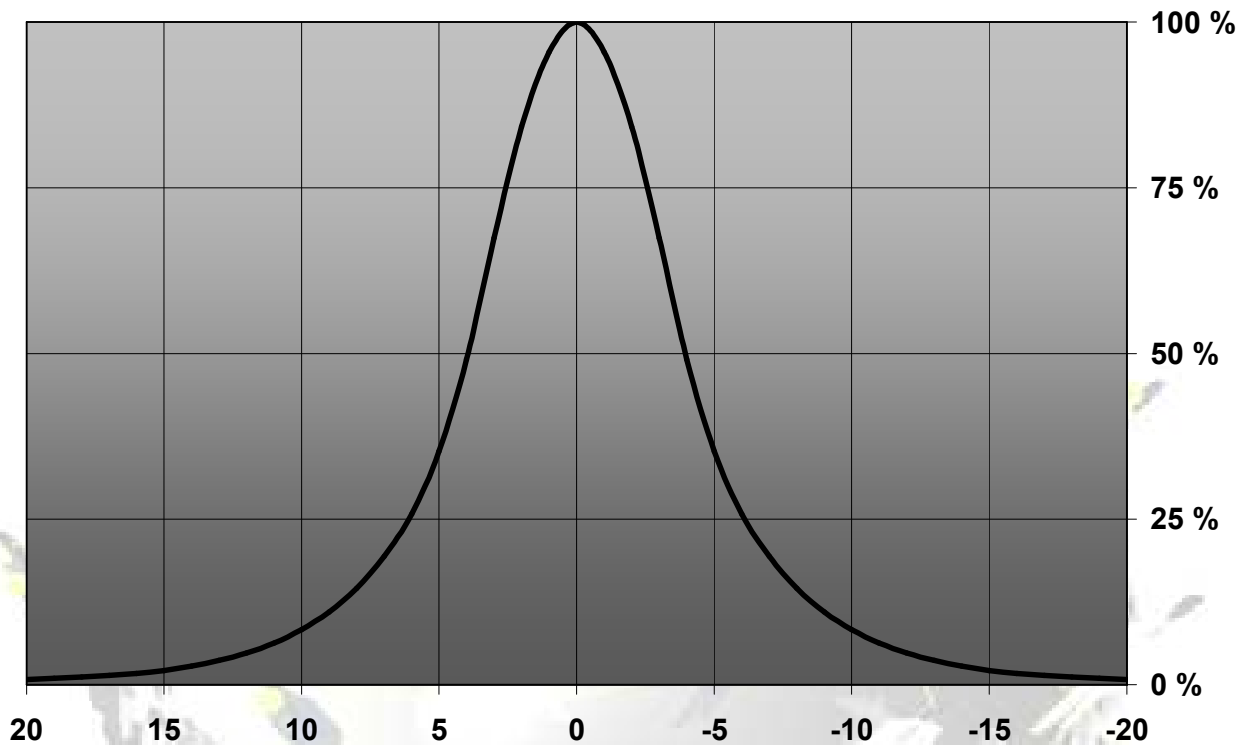
LENS TYPES

NAME	ORDERING CODE	FWHM Angle
LAURA real spot	CA11697_Laura-RS-N19-tape	±4°
LAURA smooth spot	CA11646_Laura-SS-N19-tape	to be measured shortly
LAURA diffuser	CA11362_Laura-D-N19-tape	±8°
LAURA medium	CA11357_Laura-M-N19-tape	±14
LAURA oval	CA11367_Laura-O-N19-tape	to be measured shortly
LAURA Wide reflector	CA11427_Laura-Refl-W-N19-tape	to be measured shortly

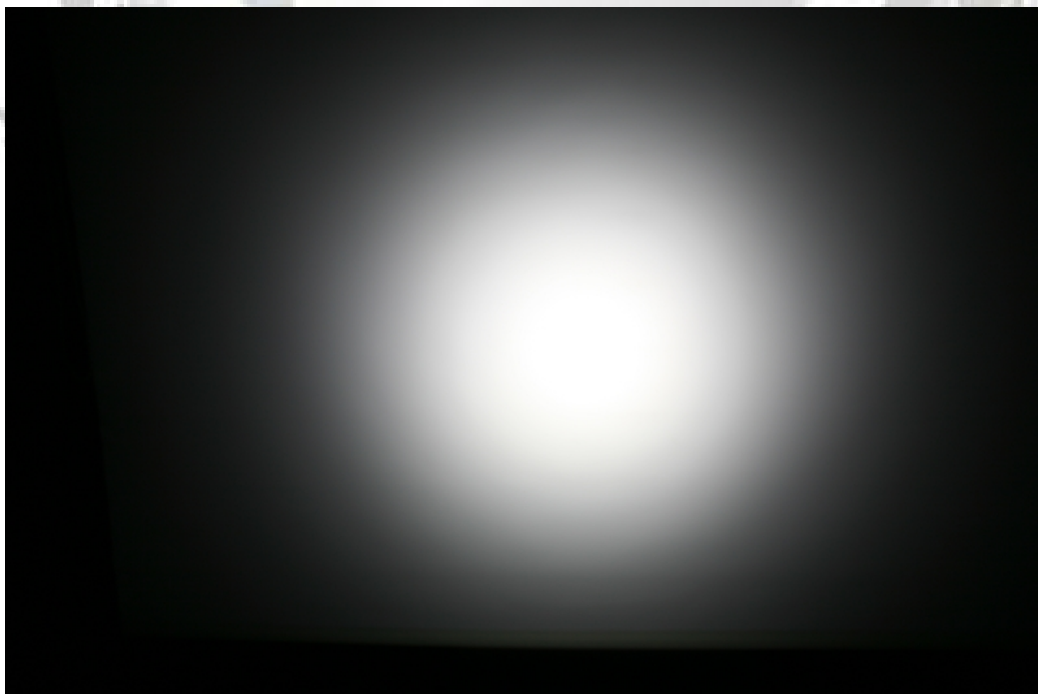
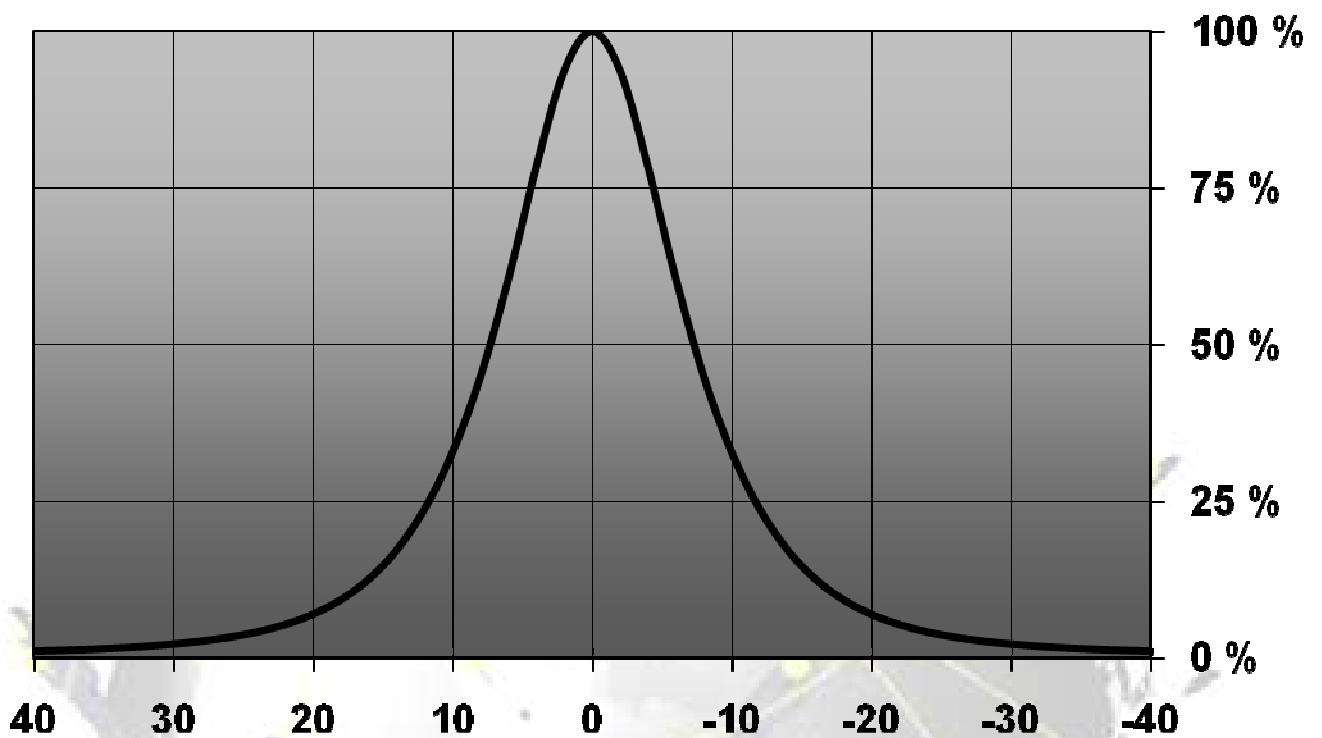
© Ledil Oy – PRELIMINARY - Subject to change without prior notice

MEASUREMENTS

Relative Intensity of CA11697_Laura-RS-N119-tape

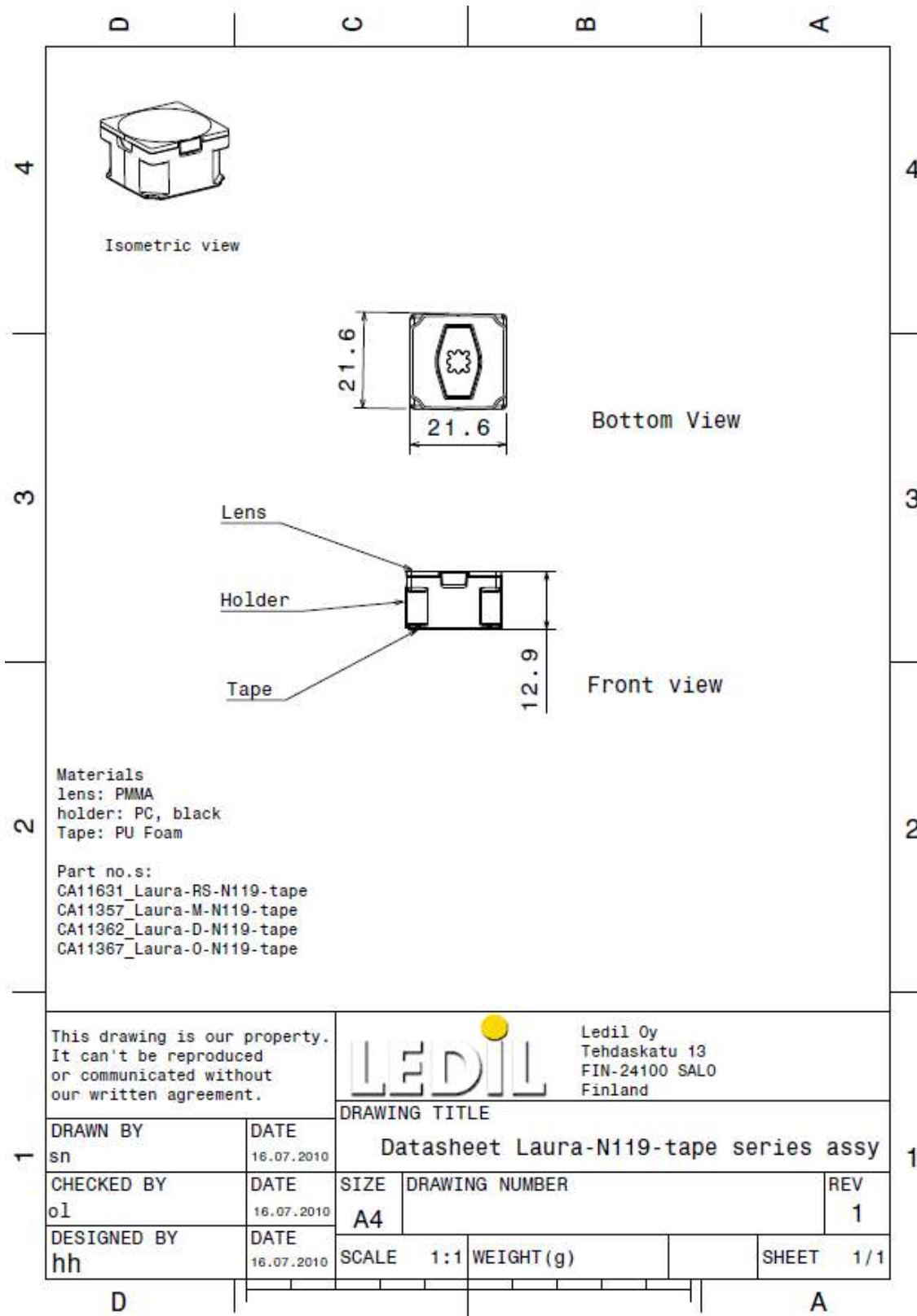


© Ledil Oy – PRELIMINARY - Subject to change without prior notice

Relative intensity of CA11362_Laura-D-N119-tape

© Ledil Oy – PRELIMINARY - Subject to change without prior notice

DRAWINGS



© Ledil Oy - PRELIMINARY - Subject to change without prior notice