



**R4/F4 Series
Master Development System
User's Guide**

Wireless made simple®

Table of Contents

- 1 Introduction
- 2 Ordering Information
- 2 R4/F4 Series Receiver Development Board
- 2 Board Objects
- 3 Initial Setup
- 3 Troubleshooting
- 3 The Prototyping Area
- 4 The GPS Receiver Section
- 5 The USB Section
- 6 The Display Section
- 7 Master Development Software
- 8 Schematics

R4/F4 Series Master Development System

User's Guide

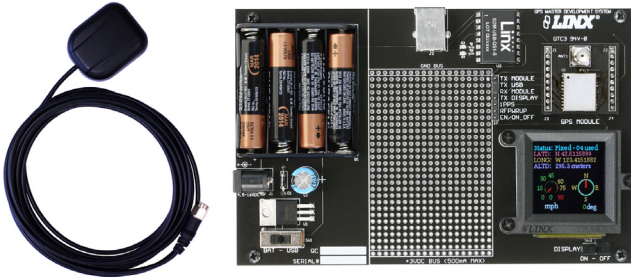


Figure 1: R4/F4 Series Master Development System

Introduction

The Linx R4/F4 Series RF modules offer a simple, efficient and cost-effective method of adding GPS capabilities to any product. The Master Development System is intended to give a designer all the tools necessary to correctly incorporate the R4/F4 Series into an end product. The development boards themselves serve several important functions:

- **Rapid Module Evaluation:** The boards allow the performance of the Linx R4/F4 Series modules to be evaluated quickly in a user's environment.
- **Application Development:** An onboard prototyping area allows for the development of custom circuits directly on the development board. All signal lines are available on a header for easy access.
- **Design Benchmark:** The boards provide a known benchmark against which the performance of a custom design may be judged.

The Master Development System includes one assembled development board, two R4/F4 Series receivers*, one SH Series antenna, 4 AAA batteries and full documentation.

* One part is soldered to each board, one extra is for use on your first prototype board

Ordering Information

Ordering Information	
Part Number	Description
MDEV-GPS-R4	R4 Series Master Development System
MDEV-GPS-F4	F4 Series Master Development System
EVM-GPS-R4	R4 Series Master Development System Daughter Board
EVM-GPS-F4	F4 Series Master Development System Daughter Board
RXM-GPS-R4-x	R4 Series GPS Receiver Module
RXM-GPS-F4-x	F4 Series GPS Receiver Module
ANT-GPS-SH	SH Series GPS Antenna

Figure 2: Ordering Information

R4/F4 Series Receiver Development Board

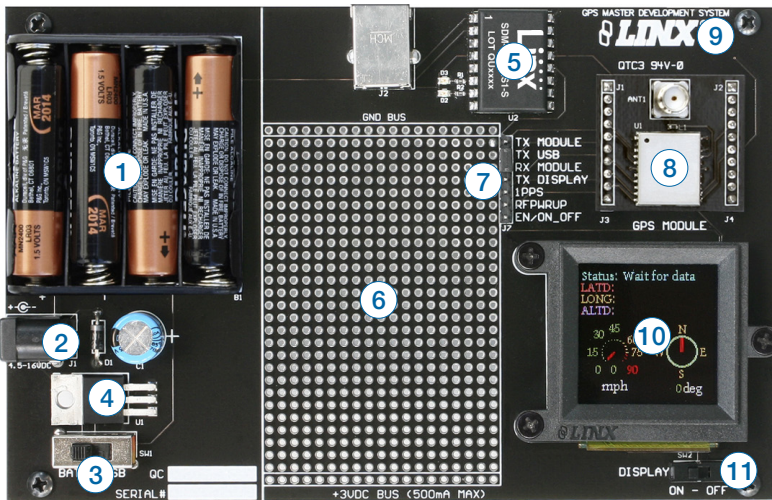


Figure 3: R4/F4 Series Receiver Development Board

Board Objects

1. Four AAA Batteries
2. DC Power Jack
3. Power Switch
4. Voltage Regulator
5. USB Interface Module
6. Prototype Area
7. Break-Out Header
8. R4/F4 Series Receiver Daughter Board
9. CR2032 Backup Battery (on the back)
10. OLED Display
11. OLED Display Power Switch

Initial Setup

Unpack the development system and install the AAA and coin-cell batteries. Connect the external GPS antenna. The power switch can select between the battery pack / DC power jack or USB if the board is plugged into a USB bus. To use the display, turn the OLED display power switch on. The development board is now ready for use. After turning on the power, the module will determine its current position. Please note, the time required for an initial fix or after long periods of storage will be considerably greater than in subsequent operation. Please refer to the module's data guide for complete information regarding time-to-first-fix (TTFF). To protect the display and extend its life, turn the display off before turning the board off.

Troubleshooting

If the boards fail to work out of the box, then try the following:

- Check the batteries to make sure they are not dead
- Check to make sure that the power switch is in the correct position
- Make sure that the jumper is set correctly
- Make sure that a jumper is installed on the Module Power Header
- Make sure that the batteries are not dead

If all of these appear to be in order, please call +1 800 736 6677 or e-mail techsupport@linxtechnologies.com for technical support.

The Prototyping Area

In addition to its evaluation functions, the board may also be used for actual product development. It features a prototyping area to facilitate the addition of application-specific circuitry. The prototyping area contains a large area of plated through-holes so that external circuitry can be placed on the board. The holes are set at 0.100" on center with a 0.040" diameter, making it easy to add most industry-standard SIP and DIP packages to the board.

External circuitry can be easily interfaced with the R4/F4 receiver through the breakout header (J7) to the right of the prototyping area. A jumper shunt has been provided to control the routing of data into the GPS module. By default the jumper is set for operation with the on-board USB module. When communicating with the GPS module using your own

components this jumper shunt should be removed. At the bottom of the prototyping area is a row connected to the 3V power supply and at the top is a row connected to ground.

Note: The on-board 3-volt regulator has approximately 300mA of headroom available for additional circuitry. If added circuitry requires a higher current, the user must add an additional regulator to the prototyping area or power the board from an external supply.

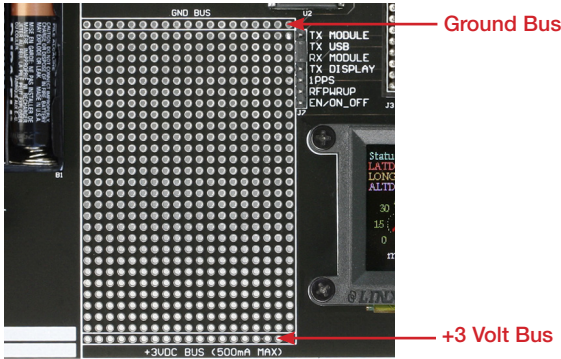


Figure 4: The Development Board Prototyping Area

The GPS Receiver Section

The receiver module is mounted on a daughter board which plugs into headers on the main development board. This daughter board has an SMA antenna connector to allow the attachment of many different styles of GPS antennas.

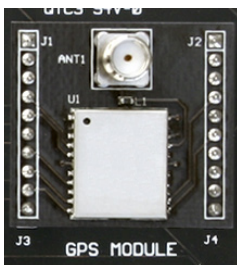


Figure 5: The Development Board GPS Receiver Section

On the bottom of the main board is a CR2032 coin cell battery that provides power to the RTC and SRAM when the receiver is powered down. This allows the receiver to start up and obtain a position fix faster. This cell will provide about two years of operation.

The USB Section

The development board features a Linx QS Series USB module for interface to a PC. This allows the board to be used with the supplied development software or with custom software developed by the user.

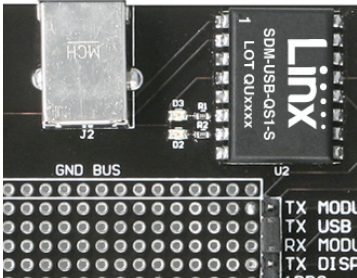


Figure 6: The USB Section

Drivers for the USB module are included on the software CD in the kit or may be downloaded from www.linxtechnologies.com. Additional information on using the QS Series USB module can also be found on the website.

The USB connection also allows the board to be powered by the USB bus instead of batteries. This can be convenient during development to eliminate the need for frequent battery replacement.

Output data from the GPS module is connected directly to the USB module, but data into the GPS module is split. This is to prevent data collisions between the USB module and any circuitry added to the prototyping area. To route serial data from the USB module to the serial data receive line on the GPS module, use the supplied jumper to connect the TX USB and RX MODULE lines on the breakout header as shown in Figure 7. Remove this jumper for use with external circuitry. The pin marked TX DISPLAY is for Linx use and should be left unconnected.

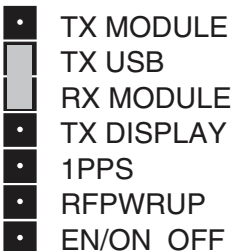


Figure 7: Jumper Configuration

The Display Section

The R4/F4 Series Master Development System features an OLED screen that displays the navigation information from the GPS module. This allows the development board to act as a stand-alone evaluation system without the need for any additional software.



Figure 8: The Development Board Display Section

The display is driven by an on-board microcontroller located under the display. Data from the GPS module is connected directly to this microcontroller. The microcontroller receives data at the receiver's default 9,600bps. **If the receiver's baud rate is changed, it will not be able to communicate with the microcontroller.**

The display and microcontroller pull about 100mA when fully powered, so a power switch is supplied to deactivate the display area when not in use, saving battery life. To protect the display and extend its life, be sure to turn the display section off before turning off the main power to the board.

Master Development Software

The development system is supplied with Windows-based software that communicates with the development board through the USB module. This software displays the information from the GPS module in the different NMEA formats and the satellite information, signal strength, and positions are displayed graphically. If the PC is connected to the internet, the software plots the current location on Google Maps. Full details are in the software's User's Guide.

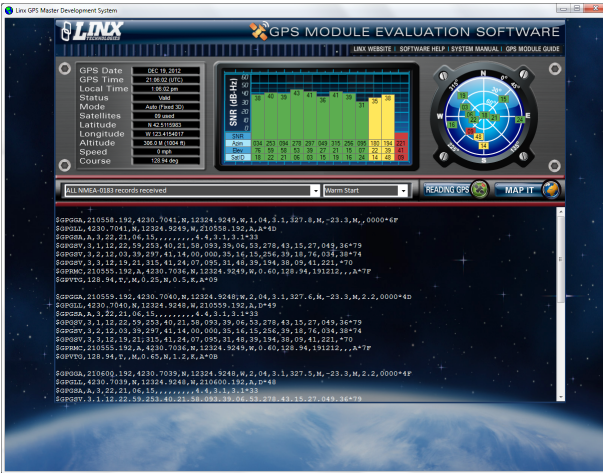


Figure 9: Master Development Software

Schematics

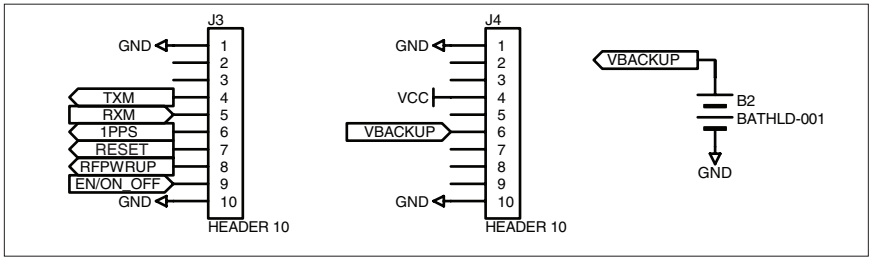


Figure 9: Receiver Section Schematic

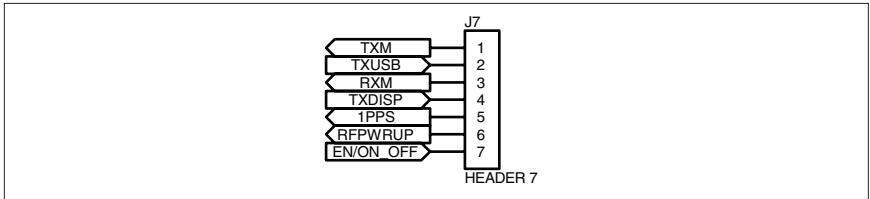


Figure 10: Header Section Schematic

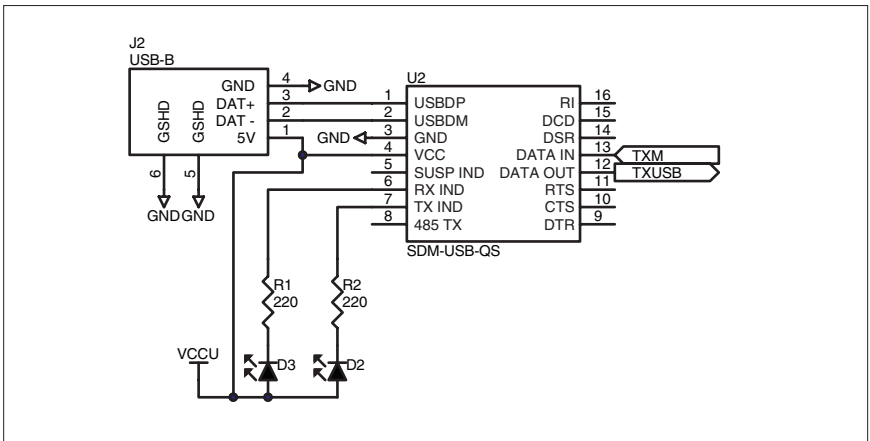


Figure 11: USB Section Schematic

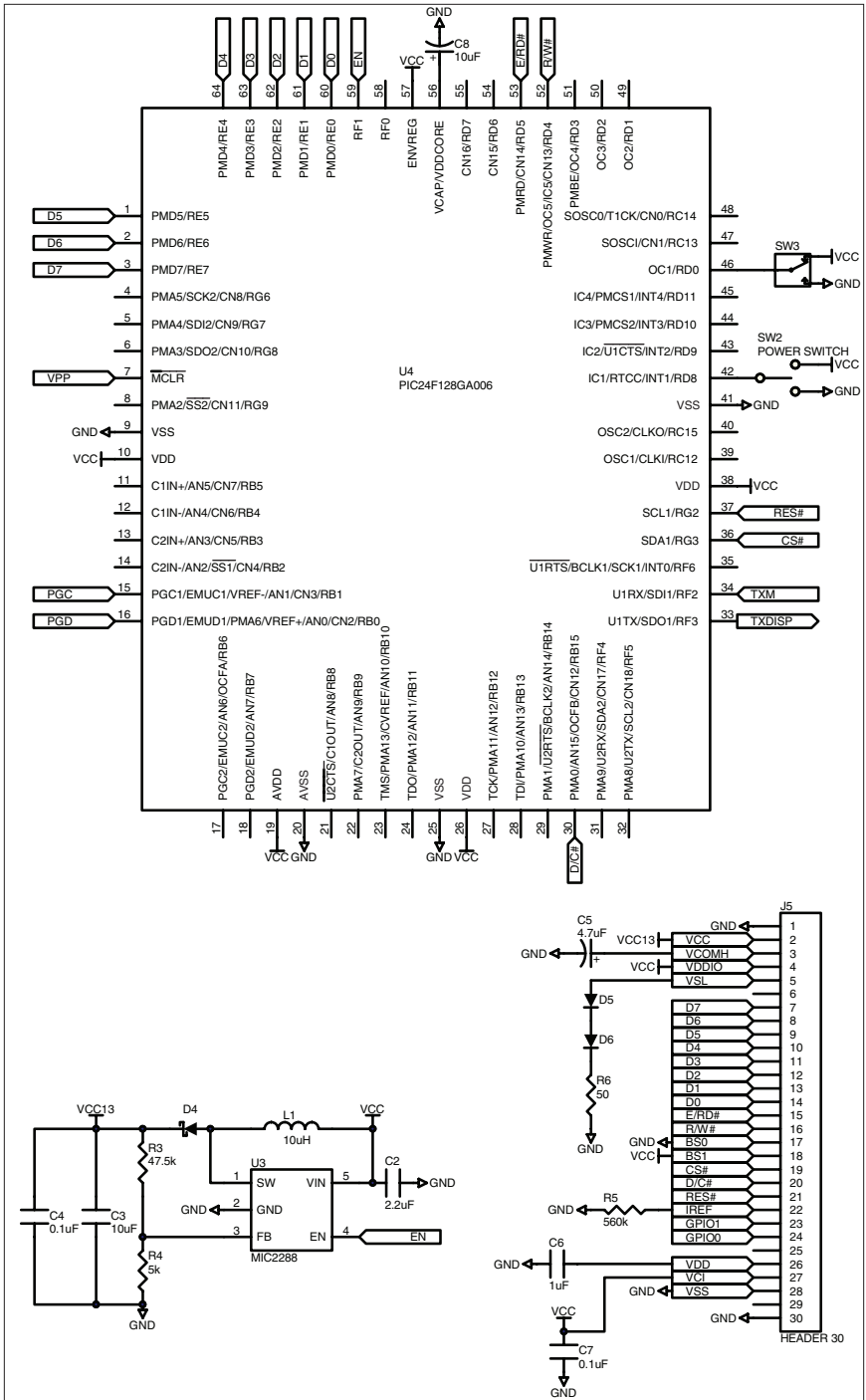


Figure 12: Display Section Schematic

(This page is intentionally blank.)

(This page is intentionally blank.)



Linx Technologies
159 Ort Lane
Merlin, OR, US 97532

3090 Sterling Circle, Suite 200
Boulder, CO 80301

Phone: +1 541 471 6256
Fax: +1 541 471 6251
www.linxtechnologies.com

Disclaimer

Linx Technologies is continually striving to improve the quality and function of its products. For this reason, we reserve the right to make changes to our products without notice. The information contained in this Data Guide is believed to be accurate as of the time of publication. Specifications are based on representative lot samples. Values may vary from lot-to-lot and are not guaranteed. "Typical" parameters can and do vary over lots and application. Linx Technologies makes no guarantee, warranty, or representation regarding the suitability of any product for use in any specific application. It is Customer's responsibility to verify the suitability of the part for the intended application. At Customer's request, Linx Technologies may provide advice and assistance in designing systems and remote control devices that employ Linx Technologies RF products, but responsibility for the ultimate design and use of any such systems and devices remains entirely with Customer and/or user of the RF products.

LINX TECHNOLOGIES DISCLAIMS ANY AND ALL WARRANTIES OF MERCHANTABILITY AND FITNESS FOR A PARTICULAR PURPOSE. IN NO EVENT SHALL LINX TECHNOLOGIES BE LIABLE FOR ANY CUSTOMER'S OR USER'S INCIDENTAL OR CONSEQUENTIAL DAMAGES ARISING OUT OF OR RELATED TO THE DESIGN OR USE OF A REMOTE CONTROL SYSTEM OR DEVICE EMPLOYING LINX TECHNOLOGIES RF PRODUCTS OR FOR ANY OTHER BREACH OF CONTRACT BY LINX TECHNOLOGIES. CUSTOMER AND/OR USER ASSUME ALL RISKS OF DEATH, BODILY INJURIES, OR PROPERTY DAMAGE ARISING OUT OF OR RELATED TO THE USE OF LINX TECHNOLOGIES RF PRODUCTS, INCLUDING WITH RESPECT TO ANY SERVICES PROVIDED BY LINX RELATED TO THE USE OF LINX TECHNOLOGIES RF PRODUCTS. LINX TECHNOLOGIES SHALL NOT BE LIABLE UNDER ANY CIRCUMSTANCES FOR A CUSTOMER'S, USER'S, OR OTHER PERSON'S DEATH, BODILY INJURY, OR PROPERTY DAMAGE ARISING OUT OF OR RELATED TO THE DESIGN OR USE OF A REMOTE CONTROL SYSTEM OR DEVICE EMPLOYING LINX TECHNOLOGIES RF PRODUCTS.

The limitations on Linx Technologies' liability are applicable to any and all claims or theories of recovery asserted by Customer, including, without limitation, breach of contract, breach of warranty, strict liability, or negligence. Customer assumes all liability (including, without limitation, liability for injury to person or property, economic loss, or business interruption) for all claims, including claims from third parties, arising from the use of the Products. Under no conditions will Linx Technologies be responsible for losses arising from the use or failure of the device in any application, other than the repair, replacement, or refund limited to the original product purchase price. Devices described in this publication may contain proprietary, patented, or copyrighted techniques, components, or materials.