

# Key-type Selector Switches

## A22NK

### Keyed 22-mm Selector Switches

#### Universal Design.

#### Emphasis on Color Coding, Workability, and Safety.

#### Easy to Use

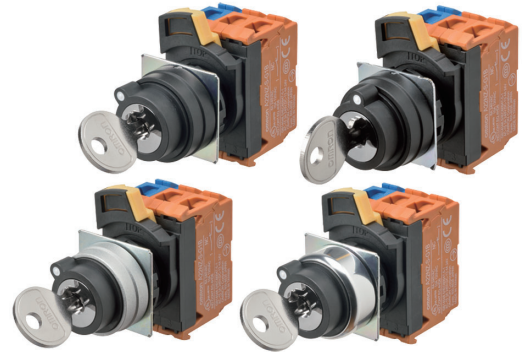
- You can connect up to three Contact Blocks in one stage for multistage expansion.
- The terminals can be retightened when Contact Blocks are stacked.
- Contact Blocks can be attached in any direction for easy assembly.
- Screw terminal structure is compatible with round crimp terminals.

#### Safety

- Easy-to-operate lock lever for secure locking.
- Easy-mounting Contact Blocks provide finger protection.
- Different colors of Contact Blocks (NO: blue, NC: orange) help prevent wiring errors.

#### Product Lineup

- Meet global safety standards.
- Available with metal or plastic bezels.
- All models are keyed alike.
- Standard-feature degree of protection: IP66 and NEMA 13.



 Refer to *Safety Precautions for All Pushbutton Switches/Indicators* and *Safety Precautions in the A22NN/A22NL datasheet*

# A22NK

## Model Number Structure

### Model Number Legend

----- Shipped as a set that includes the Operation Unit, Mounting Collar, and Contact Block.  
For information on combinations, refer to *Ordering Information* on pages 5 to 6.

### Model Numbers for Sets

A 2 2 N <sup>(1)</sup> **K** - <sup>(2)</sup> **2B** <sup>(3)</sup> **M** - <sup>(4)</sup> **01** <sup>(5)</sup> **A** <sup>(6)</sup> **A** - <sup>(7)</sup> **G** <sup>(8)</sup> **100**

#### (1) Type

| Code | Type                     |
|------|--------------------------|
| K    | Key-type Selector Switch |

#### (4) Key Number

| Code | No.  |
|------|------|
| 01   | No.1 |

#### (7) Contact Specification

| Code | Description     |
|------|-----------------|
| G    | General purpose |

#### (2) Number of Positions and Bezel Material

| Code | No. of positions | Bezel material |
|------|------------------|----------------|
| 2B   | 2                | Plastic        |
| 2M   | 2                | Brushed metal  |
| 2R   | 2                | Metal          |
| 3B   | 3                | Plastic        |
| 3M   | 3                | Brushed metal  |
| 3R   | 3                | Metal          |

#### (5) Key Release Position

| Code | Release position | Two positions | Three positions |
|------|------------------|---------------|-----------------|
| A    | All positions    |               |                 |
| B    | Left             |               |                 |
| C    | Right            |               |                 |
| D    | Center           | ---           |                 |
| G    | Left and right   | ---           |                 |

○: Release position  
●: Locked position

#### (8) Contact Configuration

| Code | Contact Blocks |    | Unit position |     |     | Two positions | Three positions |
|------|----------------|----|---------------|-----|-----|---------------|-----------------|
|      | NO             | NC | 1             | 2   | 3   |               |                 |
| 100  | 1              | 0  | NO            | --- | --- | Yes           | ---             |
| 002  | 0              | 1  | ---           | --- | NC  | Yes           | ---             |
| 101  | 2              | 0  | NO            | --- | NO  | Yes           | Yes             |
| 102  | 1              | 1  | NO            | --- | NC  | Yes           | Yes             |
| 201  | 1              | 1  | NC            | --- | NO  | ---           | Yes             |
| 202  | 0              | 2  | NC            | --- | NC  | Yes           | Yes             |
| 110  | 2              | 0  | NO            | NO  | --- | ---           | Yes             |
| 111  | 3              | 0  | NO            | NO  | NO  | Yes           | Yes             |
| 112  | 2              | 1  | NO            | NO  | NC  | Yes           | Yes             |
| 210  | 1              | 1  | NC            | NO  | --- | ---           | Yes             |
| 211  | 2              | 1  | NC            | NO  | NO  | ---           | Yes             |
| 212  | 1              | 2  | NC            | NO  | NC  | ---           | Yes             |
| 011  | 2              | 0  | ---           | NO  | NO  | ---           | Yes             |
| 012  | 1              | 1  | ---           | NO  | NC  | ---           | Yes             |
| 120  | 1              | 1  | NO            | NC  | --- | ---           | Yes             |
| 121  | 2              | 1  | NO            | NC  | NO  | ---           | Yes             |
| 122  | 1              | 2  | NO            | NC  | NC  | Yes           | Yes             |
| 220  | 0              | 2  | NC            | NC  | --- | ---           | Yes             |
| 221  | 1              | 2  | NC            | NC  | NO  | ---           | Yes             |
| 222  | 0              | 3  | NC            | NC  | NC  | Yes           | Yes             |
| 021  | 1              | 1  | ---           | NC  | NO  | ---           | Yes             |
| 022  | 0              | 2  | ---           | NC  | NC  | ---           | Yes             |

**Note:** 1. NO (blue): Normally open, NC (orange): Normally closed.  
2. Refer to the following figure for Unit positions.

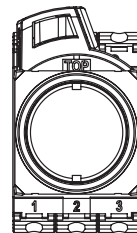
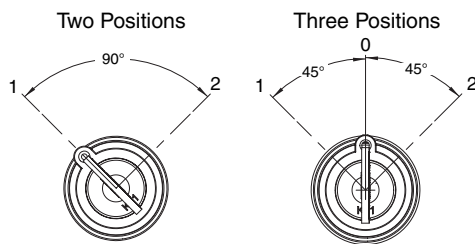
#### (3) Reset Method

| Code | Reset method                      |   |  |
|------|-----------------------------------|---|--|
| M    | Manual                            | Two-positions manual                    |  |
|      |                                   | Three-positions manual                  |  |
| L    | Automatic reset on left           | Two-positions automatic                 |  |
|      |                                   | Three-positions left automatic          |  |
| R    | Automatic reset on right          | Three-positions right automatic         |  |
| B    | Automatic reset on left and right | Three-positions left or right automatic |  |

#### (6) Degree of Protection

| Code | Protection   |
|------|--------------|
| A    | IP66, NEMA13 |

### Operation Angle



■ Specifications: Refer to page 10 and refer to the A22NN/A22NL. ■ Precautions for correct use: Refer to the A22NN/A22NL.  
■ Dimensions: Refer to page 11.

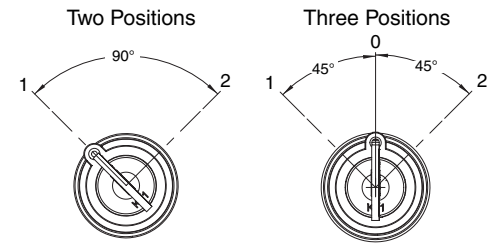
## Structure

### Contact Configuration Table

#### Two Positions

| No. of outputs | Code | Contact configuration | Unit position | Contacts | Position |     |
|----------------|------|-----------------------|---------------|----------|----------|-----|
|                |      |                       |               |          | 1        | 2   |
| 1              | 100  | SPST-NO               | (1)           | NO       |          | ON  |
|                |      |                       | (2)           | ---      | ---      | --- |
|                |      |                       | (3)           | ---      | ---      | --- |
| 1              | 002  | SPST-NC               | (1)           | ---      | ---      | --- |
|                |      |                       | (2)           | ---      | ---      | --- |
|                |      |                       | (3)           | NC       | ON       |     |
| 2              | 102  | SPST-NO/<br>SPST-NC   | (1)           | NO       |          | ON  |
|                |      |                       | (2)           | ---      | ---      | --- |
|                |      |                       | (3)           | NC       | ON       |     |
| 2              | 101  | DPST-NO               | (1)           | NO       |          | ON  |
|                |      |                       | (2)           | ---      | ---      | --- |
|                |      |                       | (3)           | NO       |          | ON  |
| 2              | 202  | DPST-NC               | (1)           | NC       | ON       |     |
|                |      |                       | (2)           | ---      | ---      | --- |
|                |      |                       | (3)           | NC       | ON       |     |
| 3              | 111  | 3PST-NO               | (1)           | NO       |          | ON  |
|                |      |                       | (2)           | NO       |          | ON  |
|                |      |                       | (3)           | NO       |          | ON  |
| 3              | 222  | 3PST-NC               | (1)           | NC       | ON       |     |
|                |      |                       | (2)           | NC       | ON       |     |
|                |      |                       | (3)           | NC       | ON       |     |
| 3              | 122  | SPST-NO/<br>DPST-NC   | (1)           | NO       |          | ON  |
|                |      |                       | (2)           | NC       | ON       |     |
|                |      |                       | (3)           | NC       | ON       |     |
| 3              | 112  | DPST-NO/<br>SPST-NC   | (1)           | NO       |          | ON  |
|                |      |                       | (2)           | NO       |          | ON  |
|                |      |                       | (3)           | NC       | ON       |     |

### Operation Angle

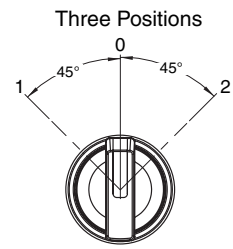


#### Three Positions

| No. of outputs | Code | Contact configuration | Unit position | Contacts | Position |     |     |
|----------------|------|-----------------------|---------------|----------|----------|-----|-----|
|                |      |                       |               |          | 1        | 0   | 2   |
| 2              | 110  | DPST-NO               | (1)           | NO       | ON       |     |     |
|                |      |                       | (2)           | NO       | ON       |     | ON  |
|                |      |                       | (3)           | ---      | ---      | --- | --- |
| 2              | 011  | DPST-NO               | (1)           | ---      | ---      | --- | --- |
|                |      |                       | (2)           | NO       | ON       |     | ON  |
|                |      |                       | (3)           | NO       |          |     | ON  |
| 2              | 101  | DPST-NO               | (1)           | NO       | ON       |     |     |
|                |      |                       | (2)           | ---      | ---      | --- | --- |
|                |      |                       | (3)           | NO       |          |     | ON  |
| 2              | 220  | DPST-NC               | (1)           | NC       |          | ON  | ON  |
|                |      |                       | (2)           | NC       |          | ON  |     |
|                |      |                       | (3)           | ---      | ---      | --- | --- |
| 2              | 022  | DPST-NC               | (1)           | ---      | ---      | --- | --- |
|                |      |                       | (2)           | NC       |          | ON  |     |
|                |      |                       | (3)           | NC       | ON       | ON  |     |
| 2              | 202  | DPST-NC               | (1)           | NC       |          | ON  | ON  |
|                |      |                       | (2)           | ---      | ---      | --- | --- |
|                |      |                       | (3)           | NC       | ON       | ON  |     |
| 2              | 120  | SPST-NO/<br>SPST-NC   | (1)           | NO       | ON       |     |     |
|                |      |                       | (2)           | NC       |          | ON  |     |
|                |      |                       | (3)           | ---      | ---      | --- | --- |

| No. of outputs | Code | Contact configuration | Unit position | Contacts | Position |     |     |
|----------------|------|-----------------------|---------------|----------|----------|-----|-----|
|                |      |                       |               |          | 1        | 0   | 2   |
| 2              | 102  | SPST-NO/<br>SPST-NC   | (1)           | NO       | ON       |     |     |
|                |      |                       | (2)           | ---      | ---      | --- | --- |
|                |      |                       | (3)           | NC       | ON       | ON  |     |
| 2              | 210  | SPST-NO/<br>SPST-NC   | (1)           | NC       |          | ON  | ON  |
|                |      |                       | (2)           | NO       | ON       |     | ON  |
|                |      |                       | (3)           | ---      | ---      | --- | --- |
| 2              | 201  | SPST-NO/<br>SPST-NC   | (1)           | NC       |          | ON  | ON  |
|                |      |                       | (2)           | ---      | ---      | --- | --- |
|                |      |                       | (3)           | NO       |          |     | ON  |
| 2              | 012  | SPST-NO/<br>SPST-NC   | (1)           | ---      | ---      | --- | --- |
|                |      |                       | (2)           | NO       | ON       |     | ON  |
|                |      |                       | (3)           | NC       | ON       | ON  |     |
| 2              | 021  | SPST-NO/<br>SPST-NC   | (1)           | ---      | ---      | --- | --- |
|                |      |                       | (2)           | NC       |          | ON  |     |
|                |      |                       | (3)           | NO       |          |     | ON  |
| 3              | 111  | 3PST-NO               | (1)           | NO       | ON       |     |     |
|                |      |                       | (2)           | NO       | ON       |     | ON  |
|                |      |                       | (3)           | NO       |          |     | ON  |
| 3              | 222  | 3PST-NC               | (1)           | NC       |          | ON  | ON  |
|                |      |                       | (2)           | NC       |          | ON  |     |
|                |      |                       | (3)           | NC       | ON       | ON  |     |
| 3              | 122  | SPST-NO/<br>DPST-NC   | (1)           | NO       | ON       |     |     |
|                |      |                       | (2)           | NC       |          | ON  |     |
|                |      |                       | (3)           | NC       | ON       | ON  |     |
| 3              | 212  | SPST-NO/<br>DPST-NC   | (1)           | NC       |          | ON  | ON  |
|                |      |                       | (2)           | NO       | ON       |     | ON  |
|                |      |                       | (3)           | NC       | ON       | ON  |     |
| 3              | 221  | SPST-NO/<br>DPST-NC   | (1)           | NC       |          | ON  | ON  |
|                |      |                       | (2)           | NC       |          | ON  |     |
|                |      |                       | (3)           | NO       | ON       |     | ON  |
| 3              | 211  | DPST-NO/<br>SPST-NC   | (1)           | NC       |          | ON  | ON  |
|                |      |                       | (2)           | NO       | ON       |     | ON  |
|                |      |                       | (3)           | NO       |          |     | ON  |
| 3              | 121  | DPST-NO/<br>SPST-NC   | (1)           | NO       | ON       |     |     |
|                |      |                       | (2)           | NC       |          | ON  |     |
|                |      |                       | (3)           | NO       |          |     | ON  |
| 3              | 112  | DPST-NO/<br>SPST-NC   | (1)           | NO       | ON       |     |     |
|                |      |                       | (2)           | NO       | ON       |     | ON  |
|                |      |                       | (3)           | NC       | ON       | ON  |     |




Operation Angle






## Ordering Information

**Model Numbers for Sets** - - - Shipped as a set that includes the Operation Unit, Mounting Collar, and Contact Block.

### Two-position, Key-type Selector Switches

| Appearance  | Bezel material | No. of outputs | Model                         | (3)<br>Reset method                     | (5)<br>Key release positions            | (8)(8)(8)<br>Contact configuration      |   |   |   |                          |
|---|----------------|----------------|-------------------------------|---|---|---|---|---|---|--------------------------|
| Plastic bezels<br>       | 2B             | 1              | A22NK-2B(3)-01(5)A-G(8)(8)(8) | M: Manual<br>L: Automatic reset on left | A: All positions<br>B: Left<br>C: Right | 100<br>002                              |   |   |   |                          |
|   |                | 2              |                               |   |   | 102<br>101<br>202                       |   |   |   |                          |
|   |                | 3              |                               |   |   | 111<br>222<br>122<br>112                |   |   |   |                          |
| Brushed metal bezels<br> | 2M             | 1              | A22NK-2M(3)-01(5)A-G(8)(8)(8) |   |   | M: Manual<br>L: Automatic reset on left | A: All positions<br>B: Left<br>C: Right | 100<br>002                              |   |                          |
|   |                | 2              |                               |   |   |   |   | 102<br>101<br>202                       |   |                          |
|   |                | 3              |                               |   |   |   |   | 111<br>222<br>122<br>112                |   |                          |
| Metal bezels<br>        | 2R             | 1              | A22NK-2R(3)-01(5)A-G(8)(8)(8) |   |   |   |   | M: Manual<br>L: Automatic reset on left | A: All positions<br>B: Left<br>C: Right | 100<br>002               |
|   |                | 2              |                               |   |   |   |   |   |   | 102<br>101<br>202        |
|   |                | 3              |                               |   |   |   |   |   |   | 111<br>222<br>122<br>112 |

## Three-position, Key-type Selector Switches

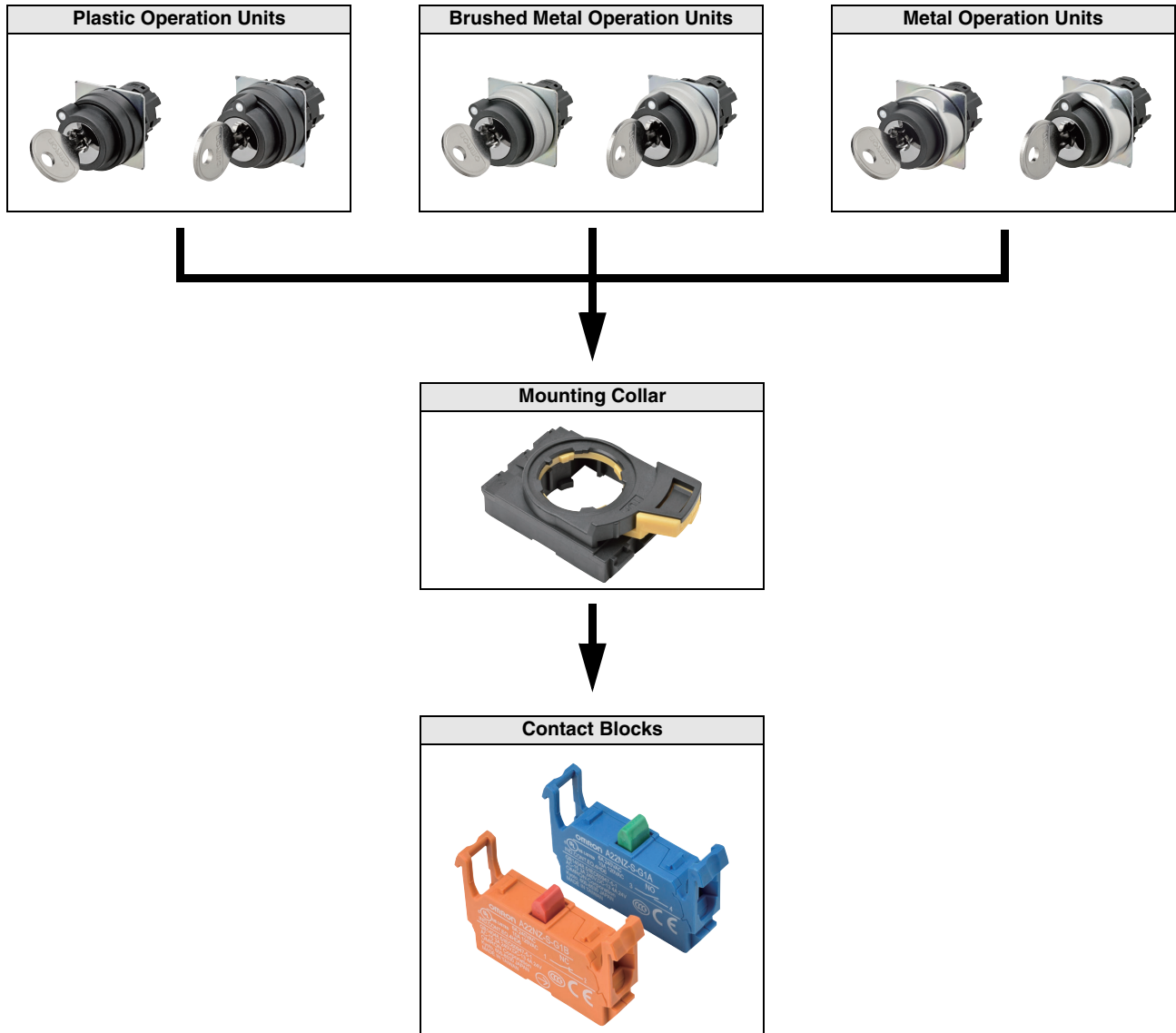
| Appearance   | Bezel material | No. of outputs | Model                         | (3)<br>Reset method  | (5)<br>Key release positions  | (8)(8)(8)<br>Contact configuration   |   |  |   |  |
|--|----------------|----------------|-------------------------------|--|---|--|---|--|---|--|
| Plastic bezels<br><br>        | 3B             | 2              | A22NK-3B(3)-01(5)A-G(8)(8)(8) | M: Manual<br>L: Automatic reset on left<br>R: Automatic reset on right<br>B: Automatic reset on left and right | A: All positions<br>B: Left<br>C: Right<br>D: Center<br>G: Left and right | 110<br>011<br>101<br>220<br>022<br>202<br>120<br>102<br>210<br>201<br>012<br>021                               |   |  |   |  |
|  |                | 3              |                               |  |   | 111<br>222<br>122<br>212<br>221<br>211<br>121<br>112   |   |  |   |  |
| Brushed metal bezels<br><br> | 3M             | 2              | A22NK-3M(3)-01(5)A-G(8)(8)(8) |  |   | M: Manual<br>L: Automatic reset on left<br>R: Automatic reset on right<br>B: Automatic reset on left and right | A: All positions<br>B: Left<br>C: Right<br>D: Center<br>G: Left and right | 110<br>011<br>101<br>220<br>022<br>202<br>120<br>102<br>210<br>201<br>012<br>021                               |   |  |
|  |                | 3              |                               |  |   |  |   | 111<br>222<br>122<br>212<br>221<br>211<br>121<br>112   |   |  |
| Metal bezels<br><br>        | 3R             | 2              | A22NK-3R(3)-01(5)A-G(8)(8)(8) |  |   |  |   | M: Manual<br>L: Automatic reset on left<br>R: Automatic reset on right<br>B: Automatic reset on left and right | A: All positions<br>B: Left<br>C: Right<br>D: Center<br>G: Left and right | 110<br>011<br>101<br>220<br>022<br>202<br>120<br>102<br>210<br>201<br>012<br>021 |
|  |                | 3              |                               |  |   |  |   |  |   | 111<br>222<br>122<br>212<br>221<br>211<br>121<br>112                             |

■ Subassemblies: Refer to pages 7 to 9.  
 (You can order Operation Units, Mounting Collars, and Contact Blocks individually.)

■ Specifications: Refer to page 10 and refer to the A22NN/A22NL.  
 ■ Dimensions: Refer to page 11.  
 ■ Accessories and tools: Refer to the A22NN/A22NL.

## Ordering Information

**Subassemblies** - - - - You can order Operation Units, Mounting Collars, and Contact Blocks individually. Use them in combination for models that are not available as assembled Switches. They can also be used as inventory for maintenance parts.



**Note:** Use a Reinforcement Plate for greater strength.



■ Model numbers of sets: Refer to page 5.




■ Specifications: Refer to page 10 and refer to the A22NN/A22NL.  
 ■ Dimensions: Refer to page 11.  
 ■ Accessories and tools: Refer to the A22NN/A22NL.

# A22NK

## Ordering Information

**Subassemblies** - - - - You can order Operation Units, Mounting Collars, and Contact Blocks individually. Use them in combination for models that are not available as assembled Switches. They can also be used as inventory for maintenance parts.

### Operation Units

| Bezel material and shape |                                   | Plastic   | Brushed metal   | Metal  | (1)<br>Key release positions  |
|--------------------------|-----------------------------------|---|---|--|---|
|                          |                                   |  |  |  |   |
| No. of positions         | Reset method                      | Model   | Model   | Model  |   |
| 2                        | Manual                            | A22NZ-2BM-01(1)A  | A22NZ-2MM-01(1)A  | A22NZ-2RM-01(1)A   | A: All positions<br>B: Left<br>C: Right                                   |
|                          | Automatic reset on left           | A22NZ-2BL-01(1)A  | A22NZ-2ML-01(1)A  | A22NZ-2RL-01(1)A   |   |
| 3                        | Manual                            | A22NZ-3BM-01(1)A  | A22NZ-3MM-01(1)A  | A22NZ-3RM-01(1)A   | A: All positions<br>B: Left<br>C: Right<br>D: Center<br>G: Left and right |
|                          | Automatic reset on left           | A22NZ-3BL-01(1)A  | A22NZ-3ML-01(1)A  | A22NZ-3RL-01(1)A   |   |
|                          | Automatic reset on right          | A22NZ-3BR-01(1)A  | A22NZ-3MR-01(1)A  | A22NZ-3RR-01(1)A   |   |
|                          | Automatic reset on left and right | A22NZ-3BB-01(1)A  | A22NZ-3MB-01(1)A  | A22NZ-3RB-01(1)A   |   |

■ Model numbers of sets: Refer to page 5.


■ Specifications: Refer to page 10 and refer to the A22NN/A22NL.  
 ■ Dimensions: Refer to page 11.  
 ■ Accessories and tools: Refer to the A22NN/A22NL.



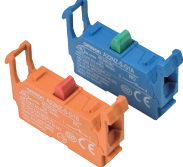
## Ordering Information

**Subassemblies** -- You can order Operation Units, Mounting Collars, and Contact Blocks individually. Use them in combination for models that are not available as assembled Switches. They can also be used as inventory for maintenance parts.


### Mounting Collar

| Appearance  | Model      |
|---|------------|
|  | A22NZ-H-01 |


### Contact Blocks

| Appearance  | Contact Specification | Model       |
|---|-----------------------|-------------|
|  | SPST-NO (blue)        | A22NZ-S-G1A |
|   | SPST-NC (orange)      | A22NZ-S-G1B |

### Reinforcement Plate

| Appearance   | Model       |
|--|-------------|
|  | A22NZ-A-C01 |

### Accessories

| Appearance   | Model      |
|--|------------|
| Key<br> | A22NZ-K-01 |

# A22NK

## Specifications

### Characteristics

| Item  | Type                               | Key-type Selector Switches   |
|---|------------------------------------|--|
|   | Allowable operating frequency      | Mechanical   |
| Electrical  |                                    | 30 operations/minute max.  |
| Insulation resistance                             |                                    | 100 MΩ min. (at 500 VDC)   |
| Contact resistance                                |                                    | 100 mΩ max. (initial value)  |
| Dielectric strength                               | Between terminals of same polarity | 2,500 VAC at 50/60 Hz for 1 min  |
|   | Between each terminal and ground   | 2,500 VAC at 50/60 Hz for 1 min  |
| Vibration resistance                              | Malfunction                        | 10 to 55 Hz, 1.5-mm double amplitude (malfunction within 1 ms)               |
| Shock resistance                                  | Malfunction                        | 1,000 m/s <sup>2</sup> max. (malfunction within 1 ms)                        |
| Durability  | Mechanical                         | 500,000 operations min. (Switches with 3 positions: 300,000 operations min.) |
|   | Electrical                         | 500,000 operations min. (Switches with 3 positions: 300,000 operations min.) |
| Ambient operating temperature* <sup>1</sup>       |                                    | -25 to 70°C  |
| Ambient operating humidity                        |                                    | 35% to 85% RH  |
| Ambient storage temperature* <sup>1</sup>         |                                    | -40 to 80°C  |
| Degree of protection* <sup>2</sup>                |                                    | IP66, NEMA13   |
| Electric shock protection class                   |                                    | Class II   |
| PTI (tracking characteristic)                     |                                    | 175  |
| Degree of contamination (application environment) |                                    | 3 (IEC 60947-5-1)  |
| Weight  |                                    | Approx. 65 g (for 1NC/1NO)   |

\*1. With no icing or condensation.

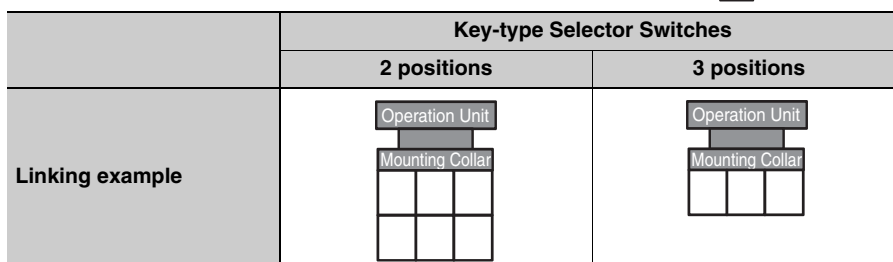
\*2. Degree of protection from the front of the panel.

### Operating Characteristics (for SPST-NO/SPST-NC)

| Item                                      | Type | Key-type Selector Switches                         |                 |
|---|------|--|-----------------|
|   |      | Manual reset                                       | Automatic reset |
| Total travel force (torque) (maximum TTF) |      | 0.6 N·m  | 0.6 N·m         |
| Total travel (TT)                         |      | 2 positions: Approx. 90°, 3 positions: Approx. 45° |                 |
| Resetting force (torque) (RF)             |      | 0.5 N·m max.                                       | ---             |

### Examples of Linked Contact Blocks

 Contact Blocks



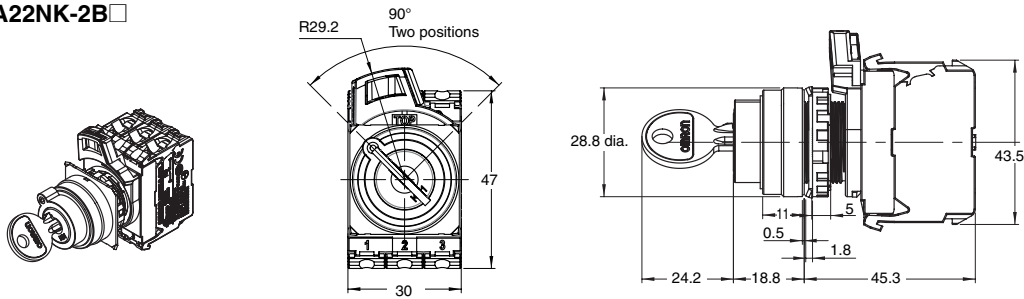
**Note:** If you increase the number of Contact Blocks, evaluate the Switch under actual working conditions before permanent installation and use the Switch within a number of switching operations that will not adversely affect the Switch's performance.

# Dimensions

## Lighted and Non-lighted Key-type Selection Switches

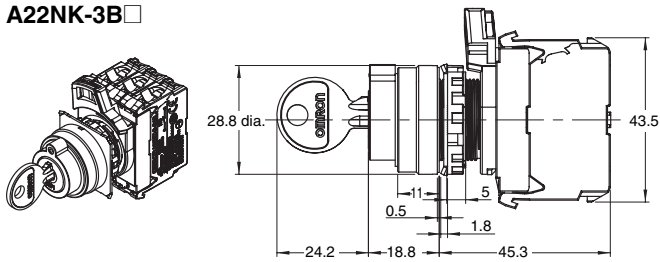
### Two-position Switches with Plastic Bezels

A22NK-2B□



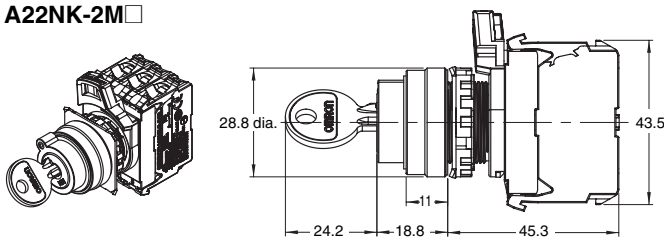
### Three-position Switches with Plastic Bezels

A22NK-3B□



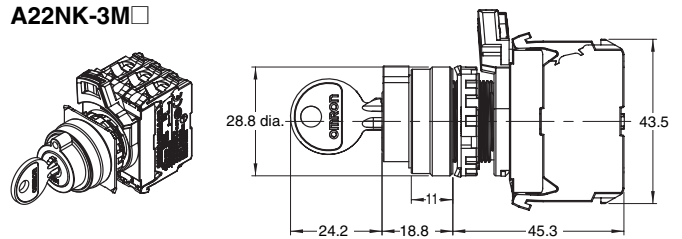
### Two-position Switches with Brushed Metal Bezels

A22NK-2M□



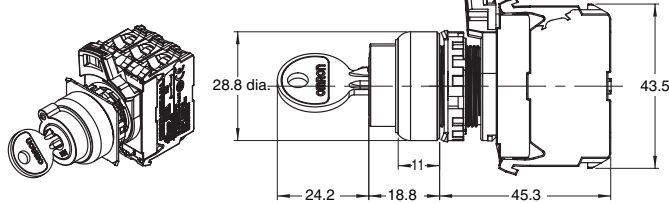
### Three-position Switches with Brushed Metal Bezels

A22NK-3M□



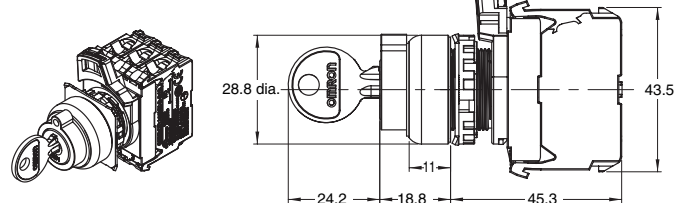
### Two-position Switches with Metal Bezels

A22NK-2R□

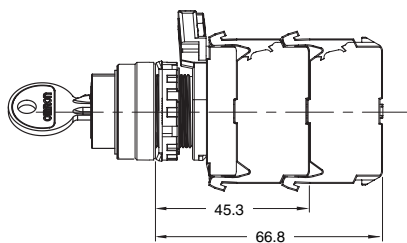


### Three-position Switches with Metal Bezels

A22NK-3R□

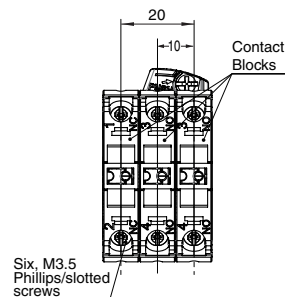


### Depth with Linked Units



### Terminal Wiring Diagrams Bottom View

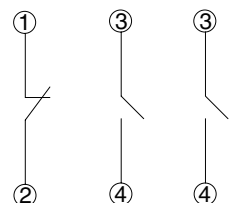
2NO/1NC  
Contact configuration  
code:112



### Terminal Connection Diagrams

2NO/1NC  
Contact configuration  
code:112

Bottom View



## A22NK

### Safety Precautions

---

Refer to *Safety Precautions for All Pushbutton Switches/Indicators* for common precautions.  
Read the *Safety Precautions* in the A22NN/A22NL datasheet.

|                                    |
|------------------------------------|
| <b>Precautions for Correct Use</b> |
|------------------------------------|

Insert the key all of the way to the back of the cylinder before you turn it.

# Terms and Conditions Agreement

## **Read and understand this catalog.**

Please read and understand this catalog before purchasing the products. Please consult your OMRON representative if you have any questions or comments.

## **Warranties.**

- (a) Exclusive Warranty. Omron's exclusive warranty is that the Products will be free from defects in materials and workmanship for a period of twelve months from the date of sale by Omron (or such other period expressed in writing by Omron). Omron disclaims all other warranties, express or implied.
- (b) Limitations. OMRON MAKES NO WARRANTY OR REPRESENTATION, EXPRESS OR IMPLIED, ABOUT NON-INFRINGEMENT, MERCHANTABILITY OR FITNESS FOR A PARTICULAR PURPOSE OF THE PRODUCTS. BUYER ACKNOWLEDGES THAT IT ALONE HAS DETERMINED THAT THE PRODUCTS WILL SUITABLY MEET THE REQUIREMENTS OF THEIR INTENDED USE.

Omron further disclaims all warranties and responsibility of any type for claims or expenses based on infringement by the Products or otherwise of any intellectual property right. (c) Buyer Remedy. Omron's sole obligation hereunder shall be, at Omron's election, to (i) replace (in the form originally shipped with Buyer responsible for labor charges for removal or replacement thereof) the non-complying Product, (ii) repair the non-complying Product, or (iii) repay or credit Buyer an amount equal to the purchase price of the non-complying Product; provided that in no event shall Omron be responsible for warranty, repair, indemnity or any other claims or expenses regarding the Products unless Omron's analysis confirms that the Products were properly handled, stored, installed and maintained and not subject to contamination, abuse, misuse or inappropriate modification. Return of any Products by Buyer must be approved in writing by Omron before shipment. Omron Companies shall not be liable for the suitability or unsuitability or the results from the use of Products in combination with any electrical or electronic components, circuits, system assemblies or any other materials or substances or environments. Any advice, recommendations or information given orally or in writing, are not to be construed as an amendment or addition to the above warranty.

See <http://www.omron.com/global/> or contact your Omron representative for published information.

## **Limitation on Liability; Etc.**

OMRON COMPANIES SHALL NOT BE LIABLE FOR SPECIAL, INDIRECT, INCIDENTAL, OR CONSEQUENTIAL DAMAGES, LOSS OF PROFITS OR PRODUCTION OR COMMERCIAL LOSS IN ANY WAY CONNECTED WITH THE PRODUCTS, WHETHER SUCH CLAIM IS BASED IN CONTRACT, WARRANTY, NEGLIGENCE OR STRICT LIABILITY.

Further, in no event shall liability of Omron Companies exceed the individual price of the Product on which liability is asserted.

## **Suitability of Use.**

Omron Companies shall not be responsible for conformity with any standards, codes or regulations which apply to the combination of the Product in the Buyer's application or use of the Product. At Buyer's request, Omron will provide applicable third party certification documents identifying ratings and limitations of use which apply to the Product. This information by itself is not sufficient for a complete determination of the suitability of the Product in combination with the end product, machine, system, or other application or use. Buyer shall be solely responsible for determining appropriateness of the particular Product with respect to Buyer's application, product or system. Buyer shall take application responsibility in all cases.

NEVER USE THE PRODUCT FOR AN APPLICATION INVOLVING SERIOUS RISK TO LIFE OR PROPERTY OR IN LARGE QUANTITIES WITHOUT ENSURING THAT THE SYSTEM AS A WHOLE HAS BEEN DESIGNED TO ADDRESS THE RISKS, AND THAT THE OMRON PRODUCT(S) IS PROPERLY RATED AND INSTALLED FOR THE INTENDED USE WITHIN THE OVERALL EQUIPMENT OR SYSTEM.

## **Programmable Products.**

Omron Companies shall not be responsible for the user's programming of a programmable Product, or any consequence thereof.

## **Performance Data.**

Data presented in Omron Company websites, catalogs and other materials is provided as a guide for the user in determining suitability and does not constitute a warranty. It may represent the result of Omron's test conditions, and the user must correlate it to actual application requirements. Actual performance is subject to the Omron's Warranty and Limitations of Liability.

## **Change in Specifications.**

Product specifications and accessories may be changed at any time based on improvements and other reasons. It is our practice to change part numbers when published ratings or features are changed, or when significant construction changes are made. However, some specifications of the Product may be changed without any notice. When in doubt, special part numbers may be assigned to fix or establish key specifications for your application. Please consult with your Omron's representative at any time to confirm actual specifications of purchased Product.

## **Errors and Omissions.**

Information presented by Omron Companies has been checked and is believed to be accurate; however, no responsibility is assumed for clerical, typographical or proofreading errors or omissions.

**OMRON Corporation Industrial Automation Company**  
Tokyo, JAPAN

Contact: [www.ia.omron.com](http://www.ia.omron.com)

**Regional Headquarters**

**OMRON EUROPE B.V.**

Wegalaan 67-69, 2132 JD Hoofddorp  
The Netherlands  
Tel: (31)2356-81-300/Fax: (31)2356-81-388

**OMRON ELECTRONICS LLC**

2895 Greenspoint Parkway, Suite 200  
Hoffman Estates, IL 60169 U.S.A  
Tel: (1) 847-843-7900/Fax: (1) 847-843-7787

**OMRON ASIA PACIFIC PTE. LTD.**

No. 438A Alexandra Road # 05-05/08 (Lobby 2),  
Alexandra Technopark,  
Singapore 119967  
Tel: (65) 6835-3011/Fax: (65) 6835-2711

**OMRON (CHINA) CO., LTD.**

Room 2211, Bank of China Tower,  
200 Yin Cheng Zhong Road,  
PuDong New Area, Shanghai, 200120, China  
Tel: (86) 21-5037-2222/Fax: (86) 21-5037-2200

**Authorized Distributor:**

© OMRON Corporation 2015 All Rights Reserved.  
In the interest of product improvement,  
specifications are subject to change without notice.

CSM\_1\_1\_0415  
**Cat. No. A241-E1-01**

0415 (0415)