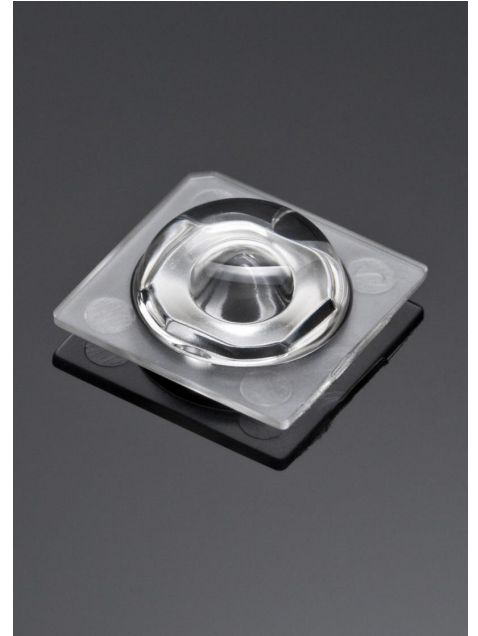


DETAILS

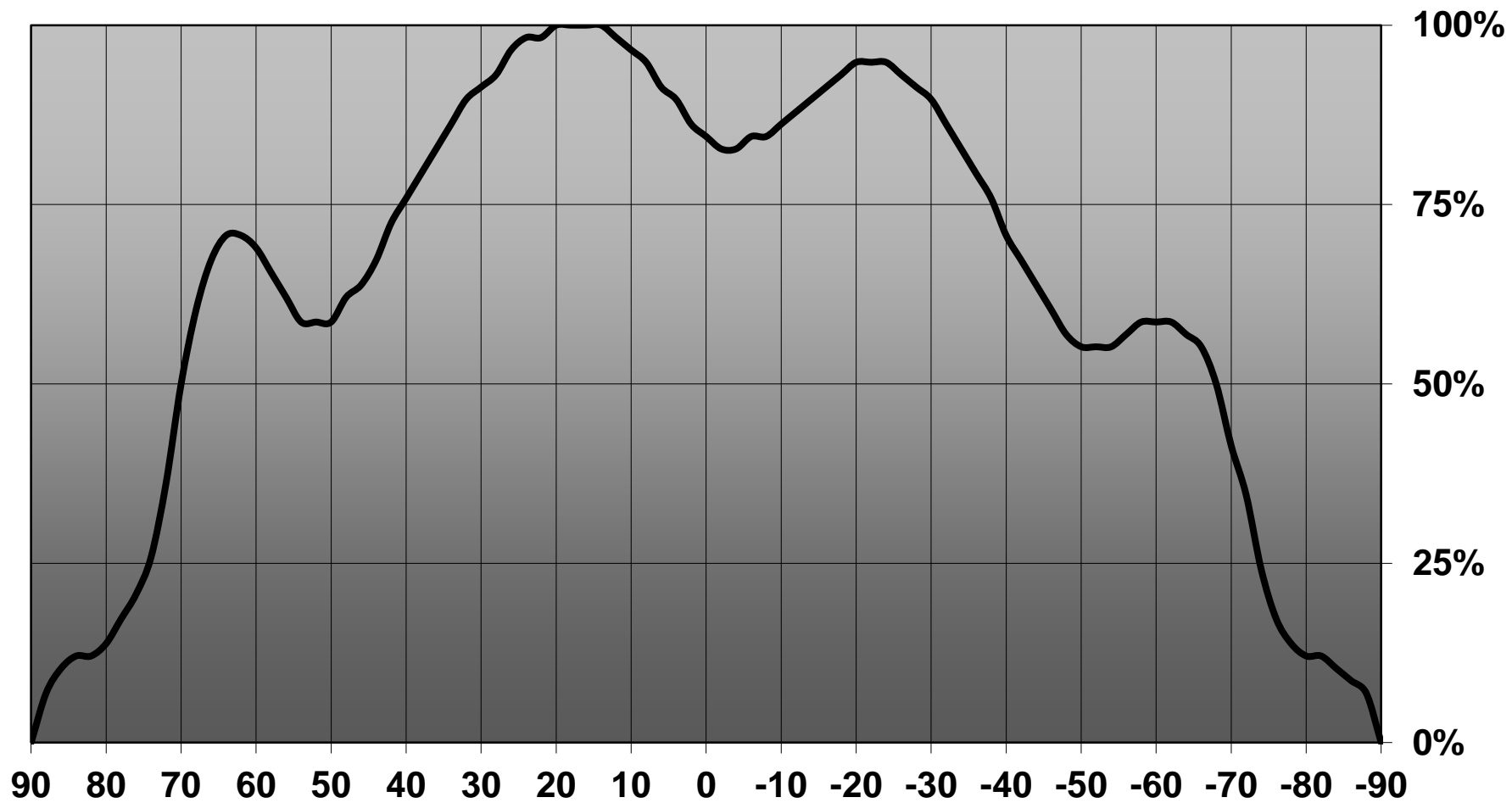
Product Number	C12473_SIRI-A
Family	Siri
Type	Lens
Color	clear
Diameter	13,9 mm
Height	4,2 mm
Style	square
Optic Material	PMMA
Holder Material	
Fastening	pin, glue
Status	ready
ROHS Compliant	Yes
Date Updated	19/12/2013

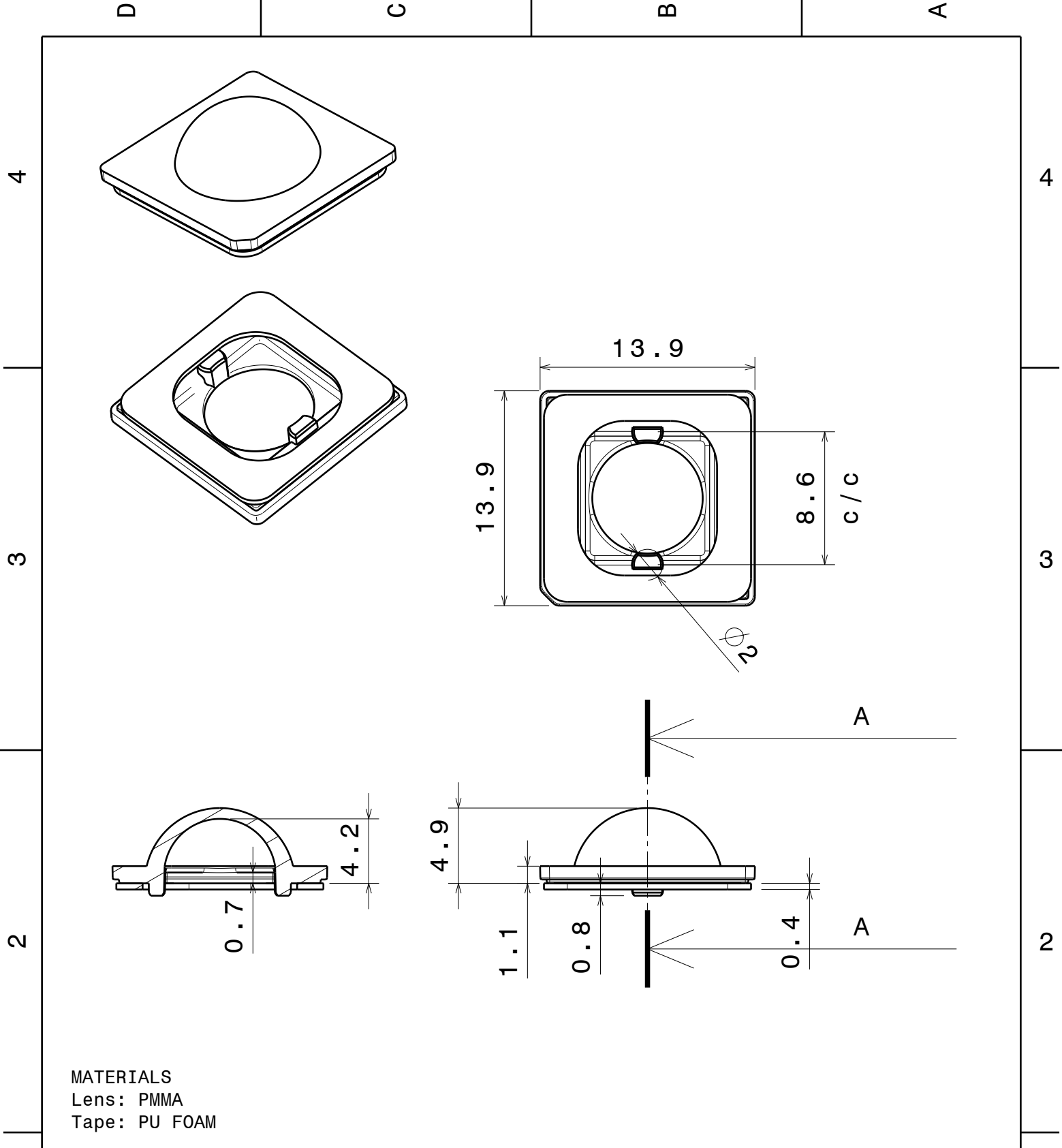
OPTICAL PROPERTIES

LED	Viewing	Light	Effi-	cd/lm	Connector
	Angle	Beam	ciency		
NVSxx19A	58+132 deg	Wide-Area...	95 %	0.330	-
Oslon Square PC	66+134 deg	Wide-Area...	95 %	0.310	-
XT-E	74+137 deg	Wide-Area...	95 %	0.300	-
XP-G2	142 deg	Wide-Area...	94 %	0.300	-



Relative intensity of CA13013_SIRI-DOME_(Luxeon_Rebel)





MATERIALS
 Lens: PMMA
 Tape: PU FOAM

This drawing is our property. It can't be reproduced or communicated without our written agreement.

LEDiL A WORLD OF INNOVATION

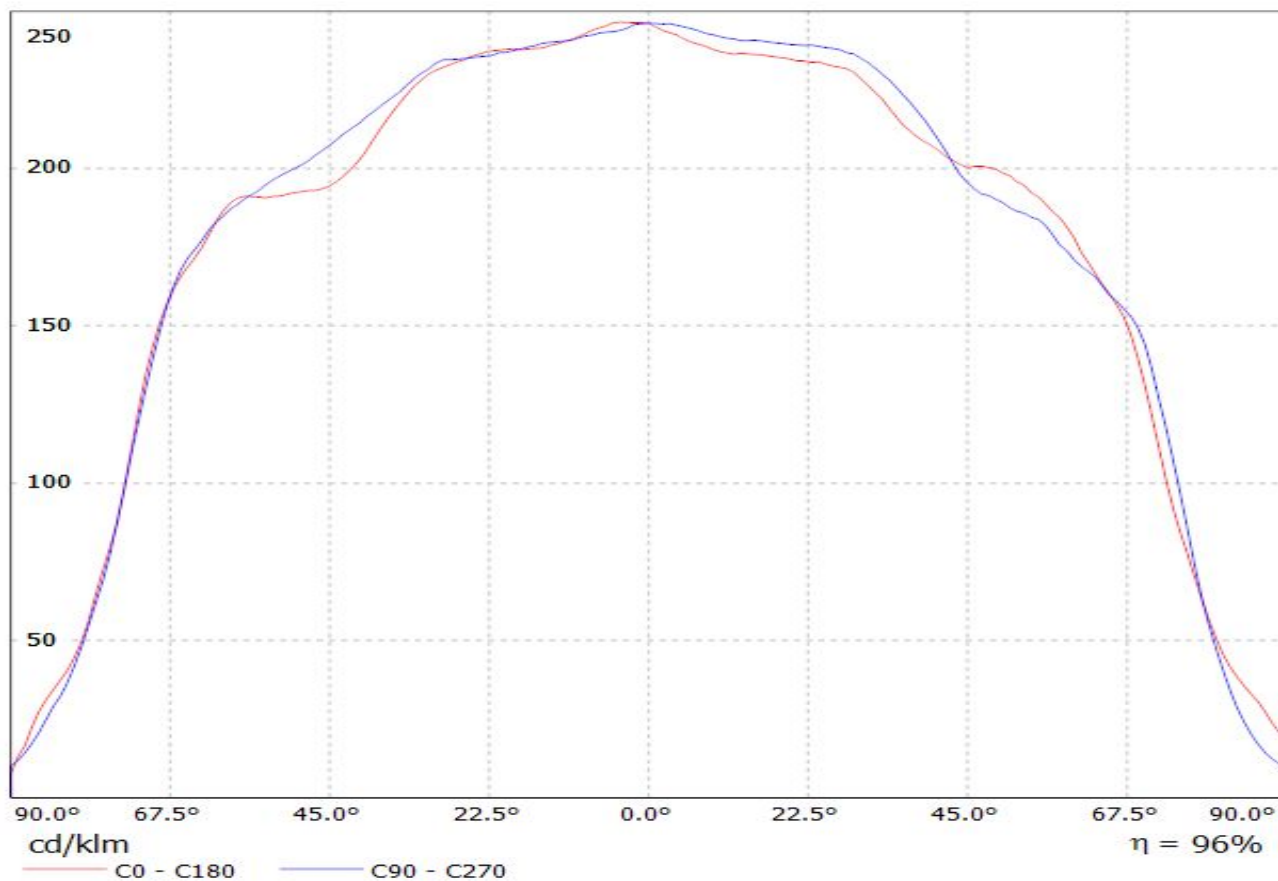
Ledil Oy
 Salorankatu 10
 FIN 24240 SALO
 Finland

Ledil Oy
 Salorankatu 10
 FIN-24100 SALO
 Finland

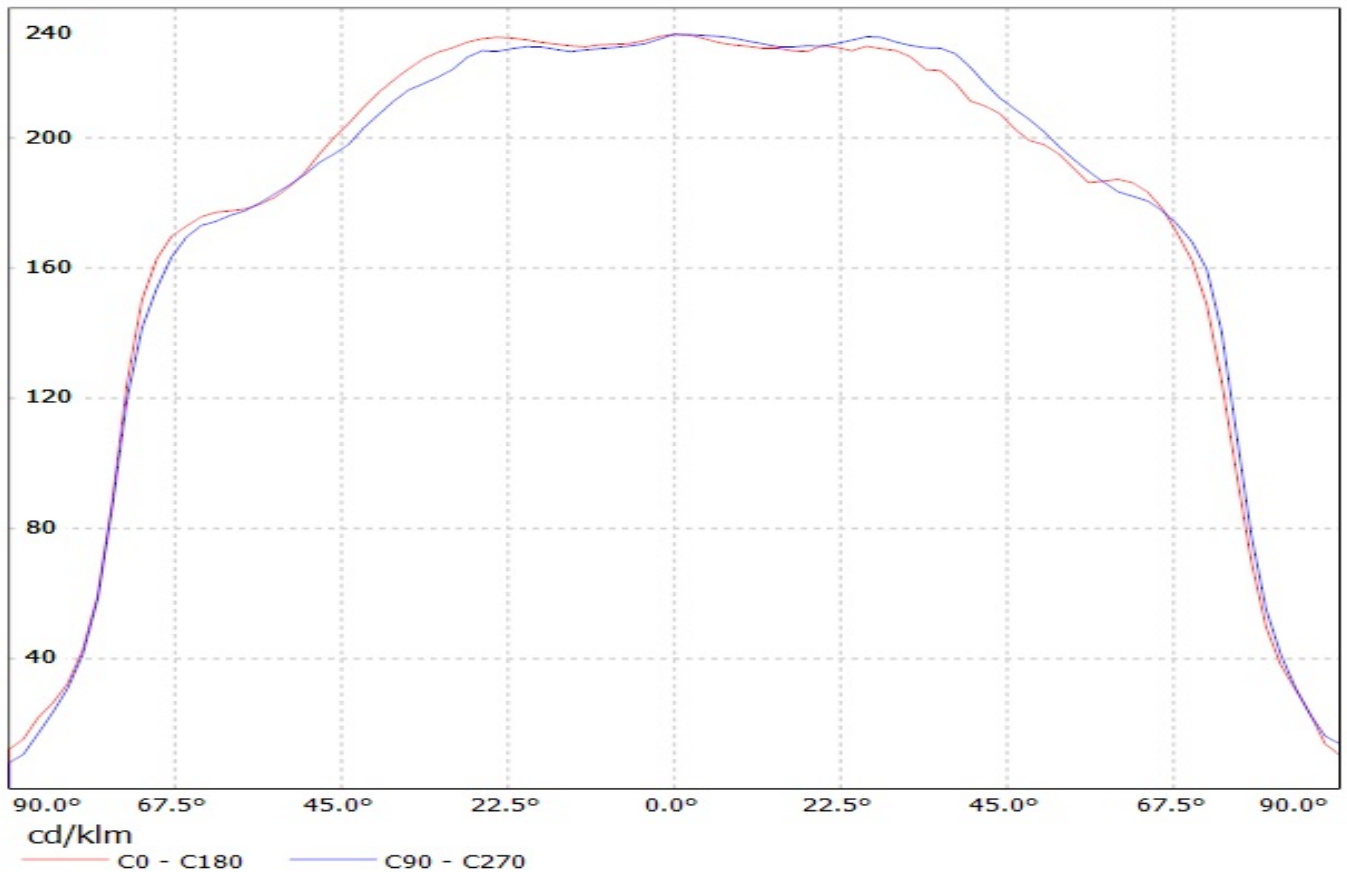
DRAWN BY as		DATE 23.07.2012	DRAWING TITLE Datasheet SIRI-DOME/-DIFF assy			
CHECKED BY ol	DATE 23.07.2012	SIZE A4	PART NUMBER			REV 001
DESIGNED BY pv	DATE 23.11.2011	SCALE 1:1	WEIGHT		SHEET 1/1	

Grid labels: D, C, B, A (top); 4, 3, 2, 1 (left); 4, 3, 2, 1 (right)

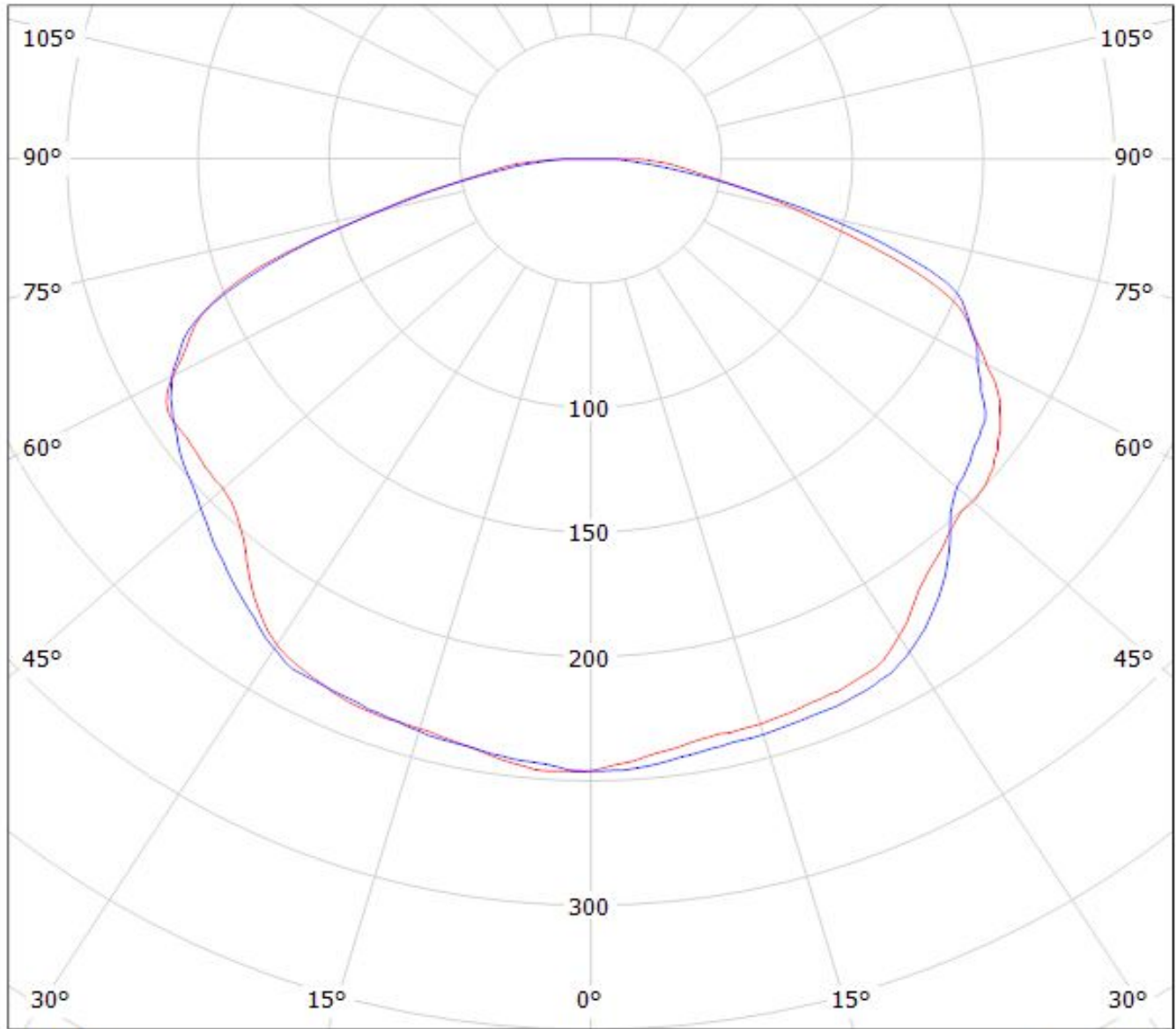
Luminaire: LEDiL Oy CA13013_SIRI-DOME_(NS9x383) Eff 96,4%
Lamps: 1 x Nichia NS9x383 (105lm@250mA)



Luminaire: LEDil Oy CA13013_SIRI-DOME_(XM-L2) Efficiency=97%
Lamps: 1 x Cree XM-L2 (XMLBWT-0-7B4-T30-0L-0001) 91lm @ 250mA CCT=3200K P=0.7W I=250mA



Luminaire: LEDiL Oy CA13013_SIRI-DOME_(NS9x383) Eff 96,4%
Lamps: 1 x Nichia NS9x383 (105lm@250mA)



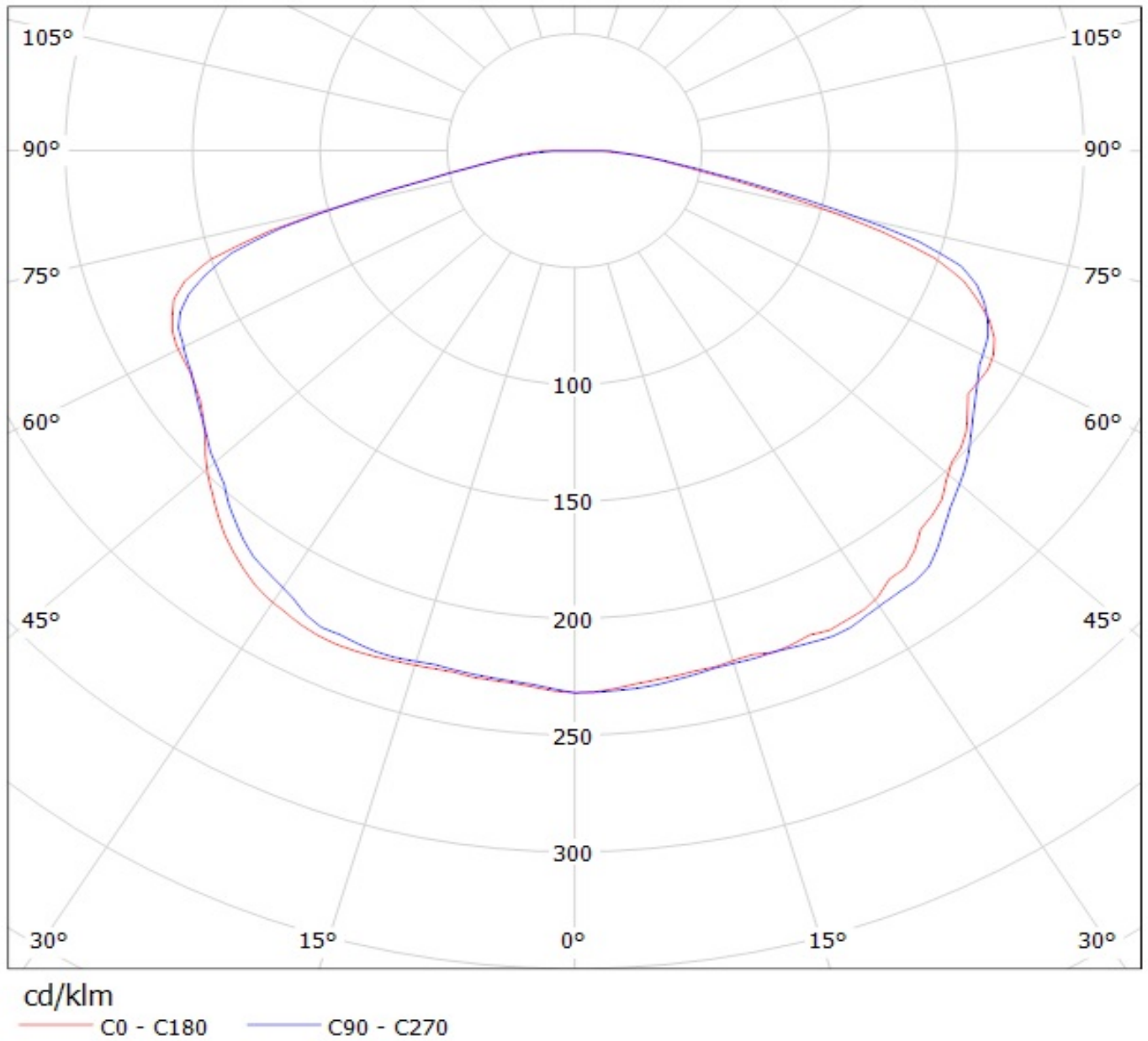
cd/klm

— C0 - C180 — C90 - C270

$\eta = 96\%$

Luminaire: LEDil Oy CA13013_SIRI-DOME_(XM-L2) Efficiency=97%

Lamps: 1 x Cree XM-L2 (XMLBWT-0-7B4-T30-0L-0001) 91lm @ 250mA CCT=3200K P=0.7W I=250mA



NOTE: The typical divergence will be changed by different color, chip size and chip position tolerance. The typical total divergence is the full angle measured where the luminous intensity is half of the peak value.