

DIN Connector, Inline Socket, 6-pole, solder terminal



6-pole

**Description**

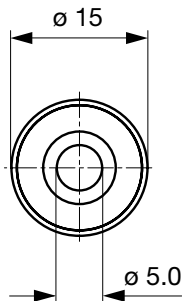
- Solder terminal:
for cable mounting
- DIN Plug: 6-pole, straight

Weblinks

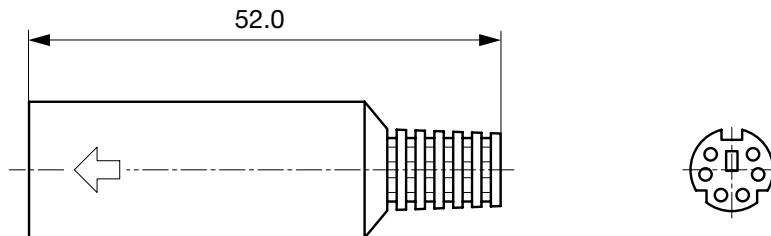
[pdf-datasheet](#), [html-datasheet](#), [General Product Information](#), [RoHS](#), [CHINA-RoHS](#), [Mating Connectors](#), [e-Shop](#), [SCHURTER-Stock-Check](#), [Distributor-Stock-Check](#)

Technical Data

Diameter	9.0 mm	Allowable Operation Temp.	-20 °C to 70 °C
Number of Poles	6-pole	Terminal	solder terminal silver plated
Ratings DC	2 A / 12 VDC	Lifetime	5000 Insertions
Ratings AC	1 A / 100 VAC		
Dielectric Strength	250 VAC		
Insulation Resistance	> 50 MΩ @ 250 VDC		

Dimensions

Cable diameter max. 5.0 mm

**Variants**

Product group	Diameter [mm]	Number of Poles	Terminal	Order Number
DIN Plug/Socket	9.0	6-pole	solder terminal	4850.3600

Packaging unit 100 Pcs

Mating Inlets/Plugs**Category / Description**

[DIN Plug/Socket Overview complete](#)

DIN Connector, Plug, 6-pole, solder terminal

4850.1610

[DIN Plug/Socket further types to 4850 DIN-Stecker, verschiedene](#)