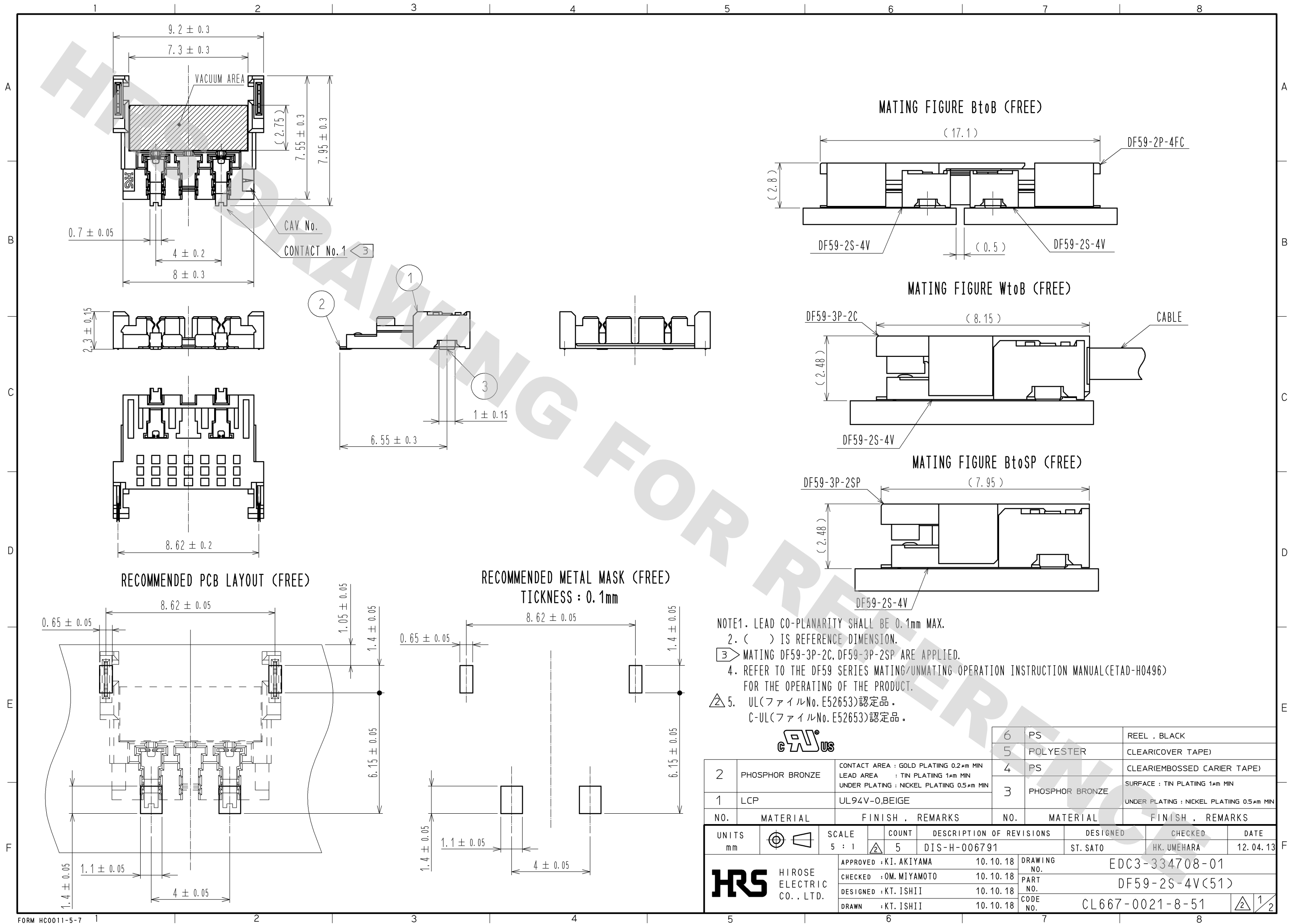


DRAWING FOR REFERENCE: This is subject to change without notice  
08/11/2012



NOTE1. LEAD CO-PLANARITY SHALL BE 0.1mm MAX.  
2. ( ) IS REFERENCE DIMENSION.  
3. MATING DF59-3P-2C, DF59-3P-2SP ARE APPLIED.  
4. REFER TO THE DF59 SERIES MATING/UNMATING OPERATION INSTRUCTION MANUAL(ETAD-H0496)  
FOR THE OPERATING OF THE PRODUCT.  
5. UL(ファイルNo. E52653)認定品。  
C-UL(ファイルNo. E52653)認定品。

CAIUS			6	PS	REEL , BLACK
			5	POLYESTER	CLEAR(COVER TAPE)
			4	PS	CLEAR(EMBOSSED CARRIER TAPE)
			3	PHOSPHOR BRONZE	SURFACE : TIN PLATING 1μm MIN UNDER PLATING : NICKEL PLATING 0.5μm MIN
2	PHOSPHOR BRONZE	CONTACT AREA : GOLD PLATING 0.2μm MIN LEAD AREA : TIN PLATING 1μm MIN UNDER PLATING : NICKEL PLATING 0.5μm MIN			
1	LCP	UL94V-0,BEIGE			
NO. MATERIAL FINISH , REMARKS			NO. MATERIAL FINISH , REMARKS		
UNITS mm			SCALE 5 : 1		
			COUNT 5		
			DESCRIPTION OF REVISIONS DIS-H-006791		
			DESIGNED ST. SATO		
			CHECKED HK. UMEHARA		
			DATE 12. 04. 13		
APPROVED : KI. AKIYAMA			DRAWING NO. EDC3-334708-01		
CHECKED : OM. MIYAMOTO			PART NO. DF59-2S-4V(51)		
DESIGNED : KT. ISHII			CODE NO. CL667-0021-8-51		
DRAWN : KT. ISHII					

DRAWING FOR REFERENCE: This is subject to change without notice  
08/11/2012

