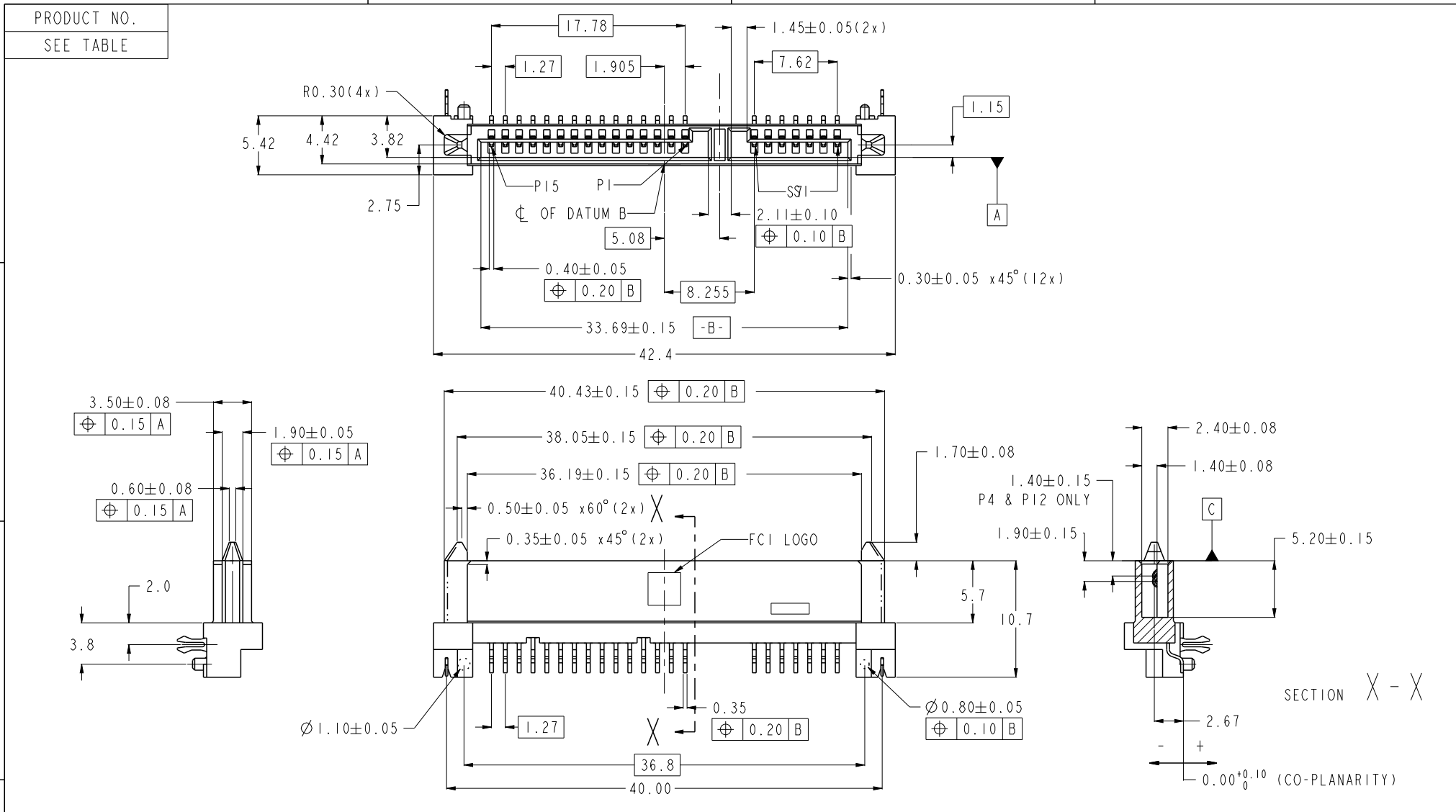
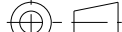






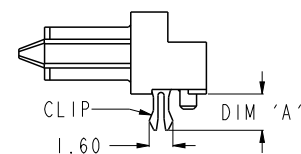
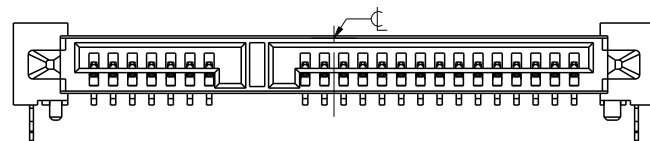
Copyright FCI.



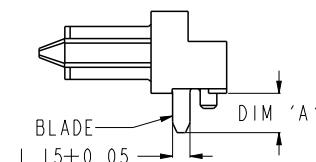
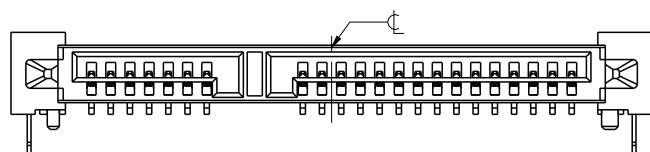
spec ref				dr	w wadmin	2006/02/20	projection 	MM 	size	A4	scale	1:1	
tolerance std				eng	Koon-Poh Tay	2013/04/10			ecn no				ELX-J-14320-1
ASME Y14.5				chr	-	-			rel level				Released
				appr	Chen-Hong Tan	2013/04/15	product family			-			
surface ✓	linear	0.X	±----		title S-ATA COMB RECEPTACLE R/A SMT TYPE ASSY			dwg no	10029364		rev S		
		0.XX	±0.20										
		0.XXX	±----										
angular	0°	±°	www.fci.com	cat. no.			-	Product - Customer Drw			sheet 1 of 3		

PrintE File - REV C - 2009-06-09

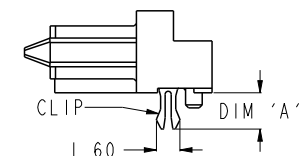
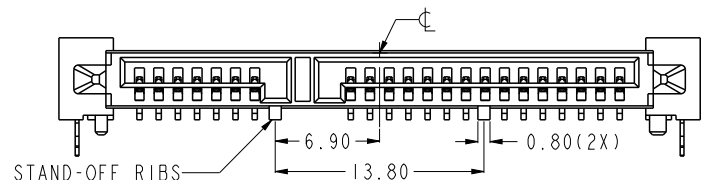
10029364-00XLF/TRLF



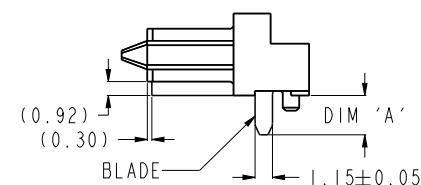
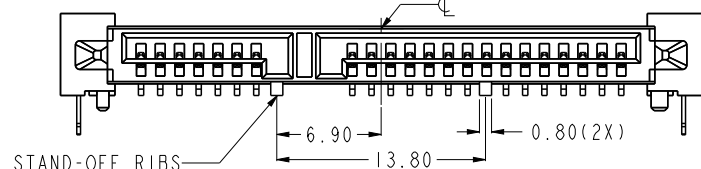
10029364-01XLF/TRLF



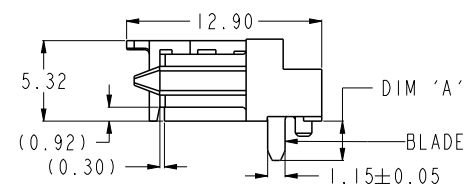
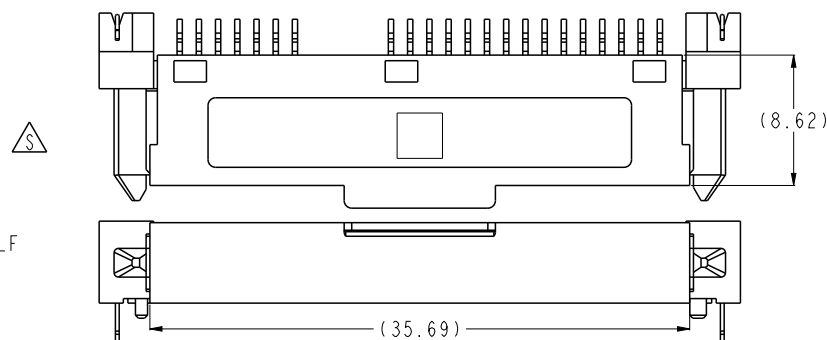
10029364-10XLF/TRLF



10029364-11XLF/TRLF



10029364-11XCLE/C-TRLF



spec ref				dr	w wcadmin	2006/02/20	<div>projection</div> <div></div>	<div>MM</div> <div></div>	size	A4	scale	1:1			
tolerance std				eng	Koon-Poh Tay	2013/04/10			ecn no				ELX-J-14320-1		
ASME Y14.5				chr	-	-			rel level				Released		
TOLERANCES UNLESS OTHERWISE SPECIFIED				appr	Chen-Hong Tan	2013/04/15			product family				-		
surface <div>- ✓</div>	linear	0.X	±----		title				dwg no	10029364		rev			
		0.XX	±0.20												
		0.XXX	±----												
	angular	0°	±°										www.fci.com		



Copyright FCI.

PRODUCT NO.	RECOMMENDED P.C.B. THICKNESS	HOLD DOWN	DIM 'A'	HOUSING WITH STAND-OFF RIBS	PACKAGING
10029364-001LF	1.60	METAL CLIP	2.40	NO	TRAY
10029364-001TRLF					TAPE & REEL
10029364-002LF	1.00		1.80	NO	TRAY
10029364-002TRLF					TAPE & REEL
10029364-102LF			YES	TRAY	
10029364-102TRLF				TAPE & REEL	
10029364-011LF	--	BLADE	2.60	NO	TRAY
10029364-011TRLF					TAPE & REEL
10029364-111LF			YES	TRAY	
10029364-111TRLF				TAPE & REEL	
10029364-111CLF				TRAY	
10029364-111C-TRLF				TAPE & REEL	

NOTES:-

1. MATERIAL:

1) HOUSING : HIGH TEMP. THERMOPLASTIC, UL 94V-0
COLOR : BLACK

2) TERMINAL : COPPER ALLOY

3) HOLD DOWN : COPPER ALLOY

2. FINISH:

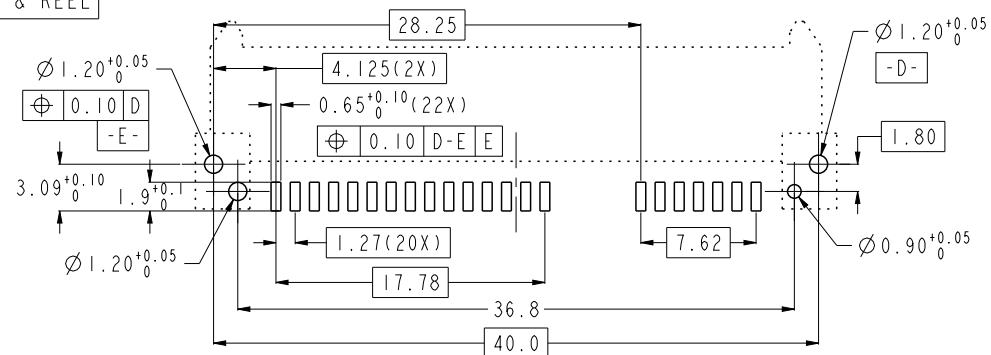
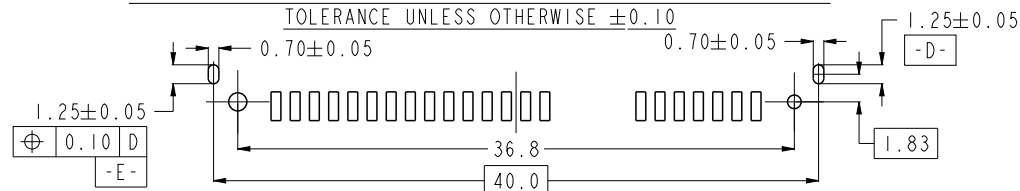
1) TERMINAL : 30u" GOLD PLATING (CONTACT POINT)
OVER 50u" MIN NICKEL

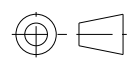

2) SOLDER TAIL : 100u" MIN TIN OVER 50u" NICKEL

3) HOLD DOWN : 100u" MIN TIN OVER 50u" NICKEL

3. TRUE POSITION APPLY AT TERMINAL TIP

4. THE STANDARD PACKAGING IS IN TRAY.

5. THE HOUSING WILL WITHSTAND EXPOSURE TO 260°C PEAK
TEMPERATURE FOR 10 SECONDS IN A CONVECTION, INFRA-RED
OR VAPOR PHASE REFLOW OVEN6 THIS PRODUCT MEETS EUROPEAN UNION DIRECTIVES AND OTHER
COUNTRY REGULATIONS AS DESCRIBED IN GS-22-0087 PART NUMBERS ENDING IN "LF" ARE MEANT FOR LEAD-FREE
IDENTIFICATION. P/N XXXXXXXX-XXLF IS EQUIVALENT TO
PREVIOUS P/N XXXXXXXX-XXX8. A  SYMBOL WILL BE NEXT TO ANY DIMENSION, VIEW, OR NOTE
WHICH HAS BEEN MODIFIED WITH THE CURRENT DRAWING REVISION.RECOMMENDED P.C.B. LAYOUT
TOLERANCE UNLESS OTHERWISE ± 0.10 ALTERNATIVE P.C.B. LAYOUT
REFER TO RECOMMENDED PCB LAYOUT FOR UNSPECIFIED DIMENSIONS
TOLERANCE UNLESS OTHERWISE ± 0.10 

spec ref	dr	w wcadmin	2006/02/20	projection	MM	size	A4	scale	1:1
tolerance std	eng	Koon-Poh Tay	2013/04/10			ecn no	ELX-J-14320-1		
ASME Y14.5	chr	-	-			rel level	Released		
appr	Chen-Hong Tan	2013/04/15		product family	-				
surface 	linear	0.X	±----	FCI	title	S-ATA COMB RECEPTACLE	dwg no	10029364	rev
		0.XX	±0.20			R/A SMT TYPE ASSY			S
		0.XXX	±----						
	angular	0°	±°	www.fci.com	cat. no.	-	Product - Customer Drw	sheet 3 of 3	