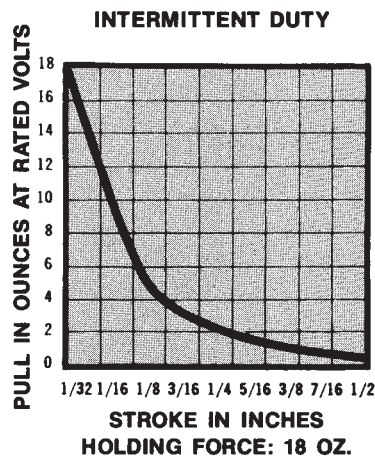
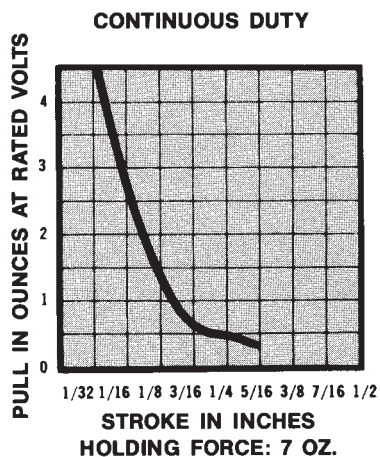


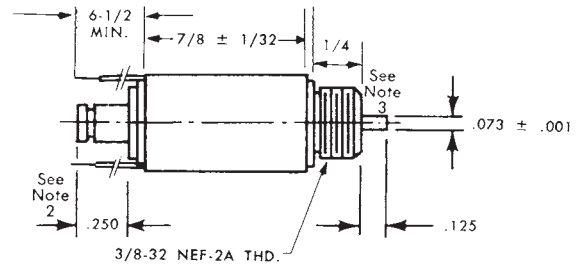
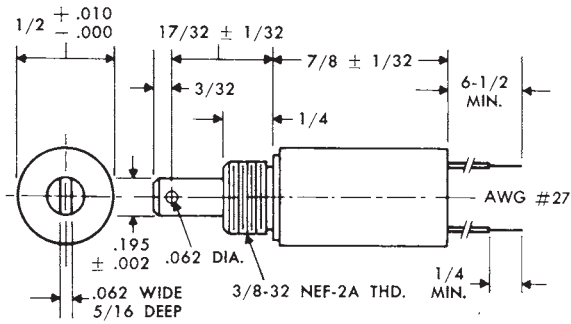
## Notes:

1. Solenoid shown in energized position.
2. .250 Plunger configuration shown supplied for spring return only.
3. Largest size thread that may be threaded on push rod #0.
4. Push force approximately 90% of pull forces shown.

## Type C7-18

Specifications		Standard Coils		
Size	7/16" Diameter x 1 1/8" Long (From Mounting Surface)	Nominal Volts (D.C.)	Resistance (OHMS ± 10%) at 25°C	
Weight	1/2 Oz. Max.		Continuous Duty	Intermittent Duty
Mounting	5/16-32 Threaded Bushing (Nut and Lockwasher Supplied)	6	18	3.6
Dielectric Strength	500 VRMS	12	72	14.4
Insulation Material	Class "A" (105° C)	24	288	58.0
Life Expectancy	10 Million Cycles at Rated Load	110	6613	1323.0
Nominal Coil Power	Continuous Duty—2 Watts Intermittent Duty (10%)—10 Watts (One Minute Max. on Time)	Other Coils and Duty Cycles Available Upon Request		

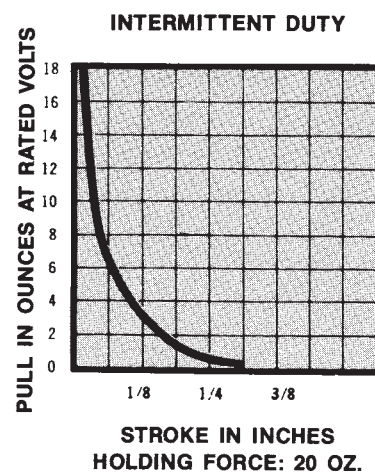
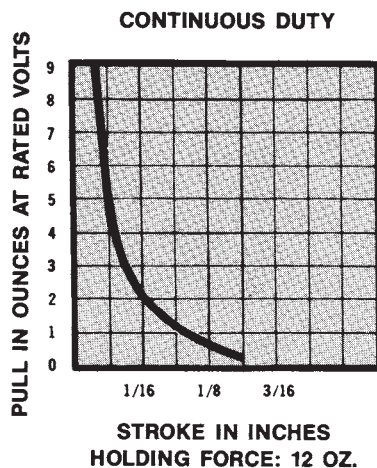


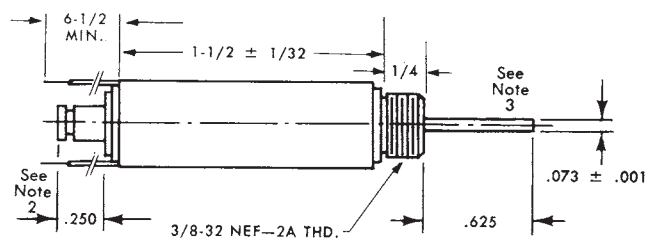
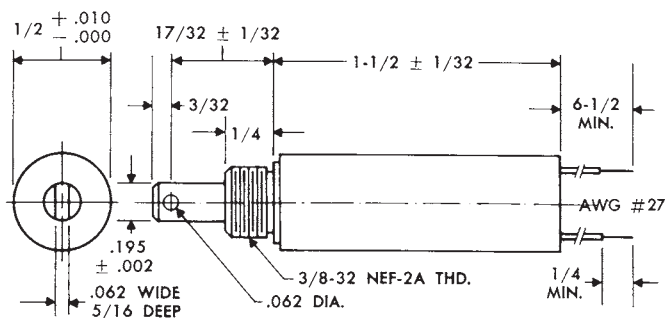
**Notes:**

1. Solenoid shown in energized position.
2. .250 Plunger configuration shown supplied for spring return only.
3. Largest size thread that may be threaded on push rod #1.
4. Push force approximately 90% of pull forces shown.

**Type C8-14**

Specifications		Standard Coils		
Size	1/2" Diameter x 7/8" Long (From Mounting Surface)	Nominal Volts (D.C.)	Resistance (OHMS $\pm 10\%$ ) at 25°C	
Weight	1 Oz. Max.		Continuous Duty	Intermittent Duty
Mounting	3/8-32 Threaded Bushing (Nut and Lockwasher Supplied)	6	15	5.0
Dielectric Strength	500 VRMS	12	60	20.6
Insulation Material	Class "A" (105° C)	24	240	82.0
Life Expectancy	10 Million Cycles at Rated Load	110	5510	1890.0
Nominal Coil Power	Continuous Duty—2.4 Watts Intermittent Duty (10%)—7 Watts (One Minute Max. on Time)	Other Coils and Duty Cycles Available Upon Request		



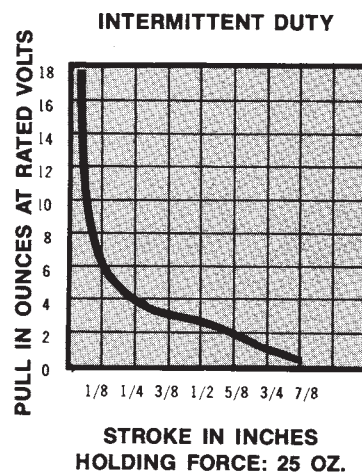
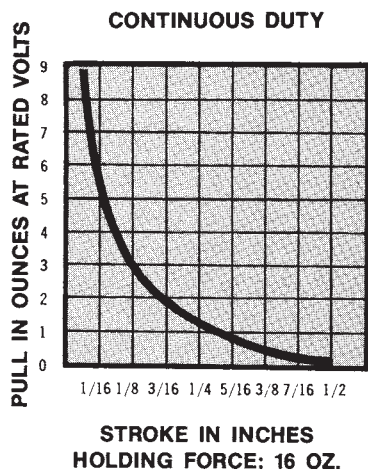


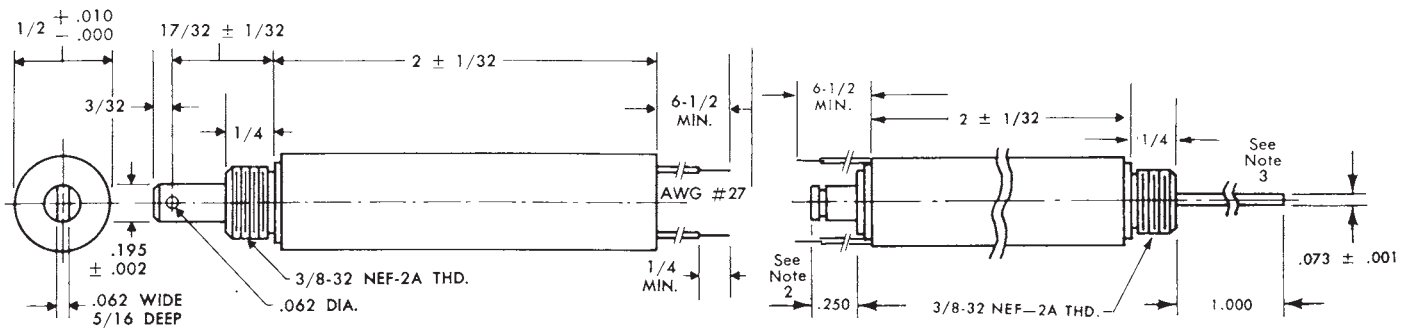
**Notes:**

1. Solenoid shown in energized position.
2. .250 Plunger configuration shown supplied for spring return only.
3. Largest size thread that may be threaded on push rod #1.
4. Push force approximately 90% of pull forces shown.

## Type C8-24

Specifications		Standard Coils		
Size	½" Diameter x 1½" Long (From Mounting Surface)	Nominal Volts (D.C.)	Resistance (OHMS ± 10%) at 25°C	
Weight	1½ Oz. Max.		Continuous Duty	Intermittent Duty
Mounting	⅜-32 Threaded Bushing (Nut and Lockwasher Supplied)	6	10.3	2.4
Dielectric Strength	500 VRMS	12	41.0	9.6
Insulation Material	Class "A" (105° C)	24	165.0	38.5
Life Expectancy	10 Million Cycles at Rated Load	110	3780.0	882.0
Nominal Coil Power	Continuous Duty—3.5 Watts Intermittent Duty (10%)—15 Watts (One Minute Max. on Time)	Other Coils and Duty Cycles Available Upon Request		

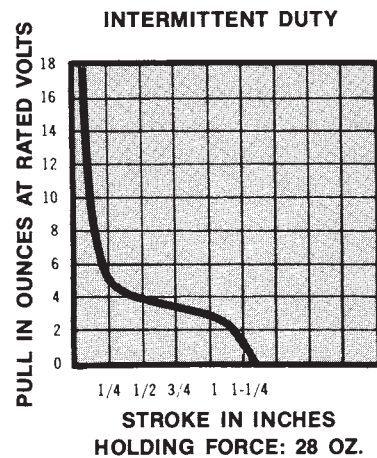
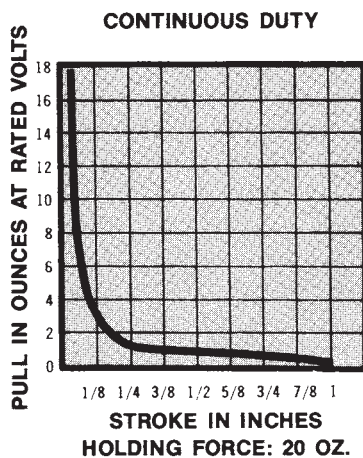


**Notes:**

1. Solenoid shown in energized position.
2. .250 Plunger configuration shown supplied for spring return only.
3. Largest size thread that may be threaded on push rod #1.
4. Push force approximately 90% of pull forces shown.

**Type C8-32**

Specifications		Standard Coils		
Size	1/2" Diameter x 2" Long (From Mounting Surface)	Nominal Volts (D.C.)	Resistance (OHMS $\pm 10\%$ ) at 25°C	
Weight	2 Oz. Max.		Continuous Duty	Intermittent Duty
Mounting	3/8-32 Threaded Bushing (Nut and Lockwasher Supplied)	6	9	1.8
Dielectric Strength	500 VRMS	12	36	7.2
Insulation Material	Class "A" (105° C)	24	145	29.0
Life Expectancy	10 Million Cycles at Rated Load	110	3306	661.0
Nominal Coil Power	Continuous Duty—4 Watts Intermittent Duty (10%)—20 Watts (One Minute Max. on Time)	Other Coils and Duty Cycles Available Upon Request		

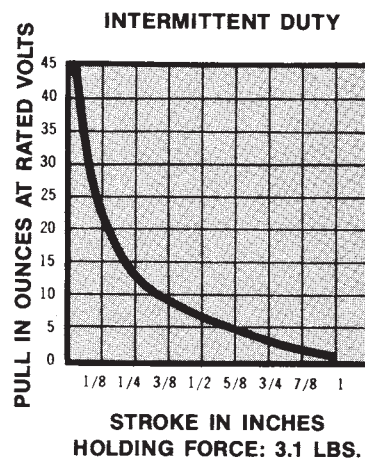
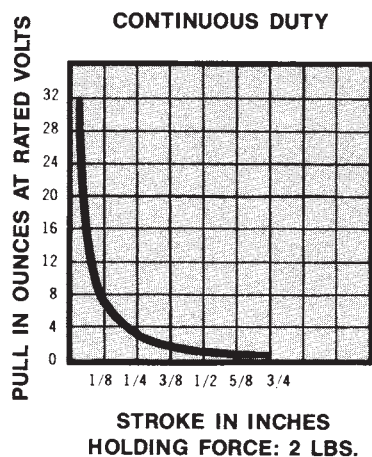


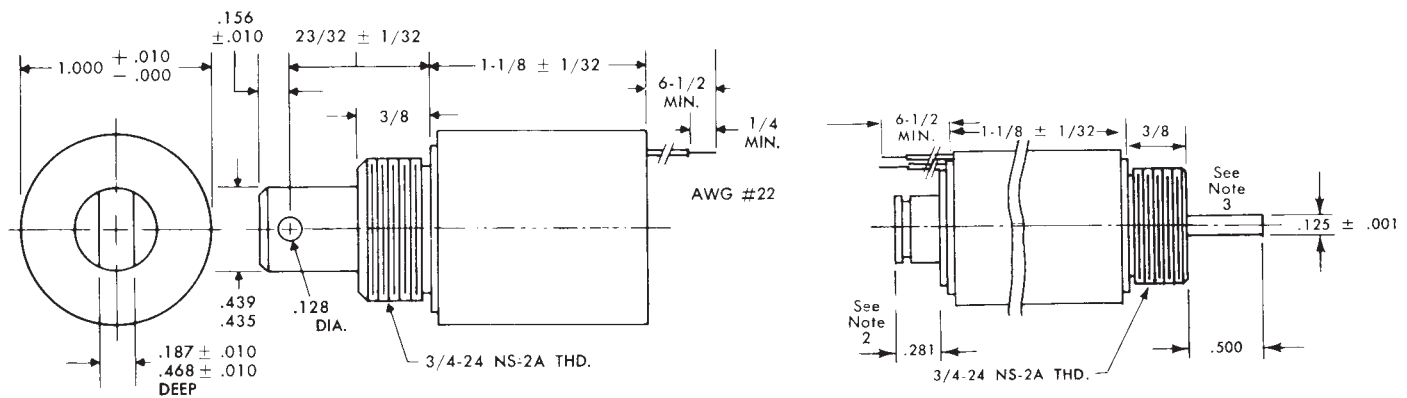


1. Solenoid shown in energized position.
2. .265 Plunger configuration shown supplied for spring return only.
3. Largest size thread that may be threaded on push rod #3.
4. Push force approximately 90% of pull forces shown.

## Type C12-24

Specifications		Standard Coils		
Size	¾" Diameter x 1½" Long (From Mounting Surface)	Nominal Volts (D.C.)	Resistance (OHMS ± 10%) at 25°C	
Weight	3 Oz. Max.		Continuous Duty	Intermittent Duty
Mounting	15/32-32 Threaded Bushing (Nut and Lockwasher Supplied)	6	10.3	1.6
Dielectric Strength	500 VRMS	12	41.0	6.5
Insulation Material	Class "A" (105° C)	24	165.0	26.0
Life Expectancy	10 Million Cycles at Rated Load	110	3780.0	600.0
Nominal Coil Power	Continuous Duty—3.5 Watts Intermittent Duty (10%)—22 Watts (One Minute Max. on Time)	Other Coils and Duty Cycles Available Upon Request		



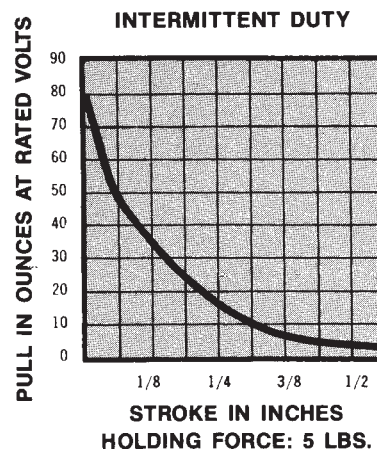
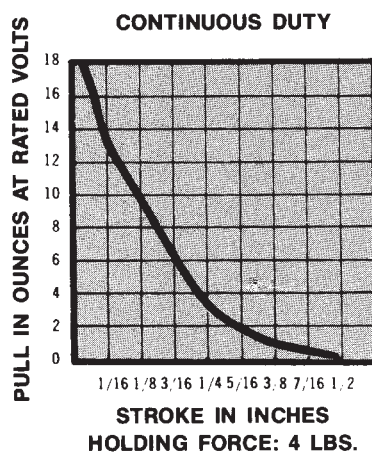


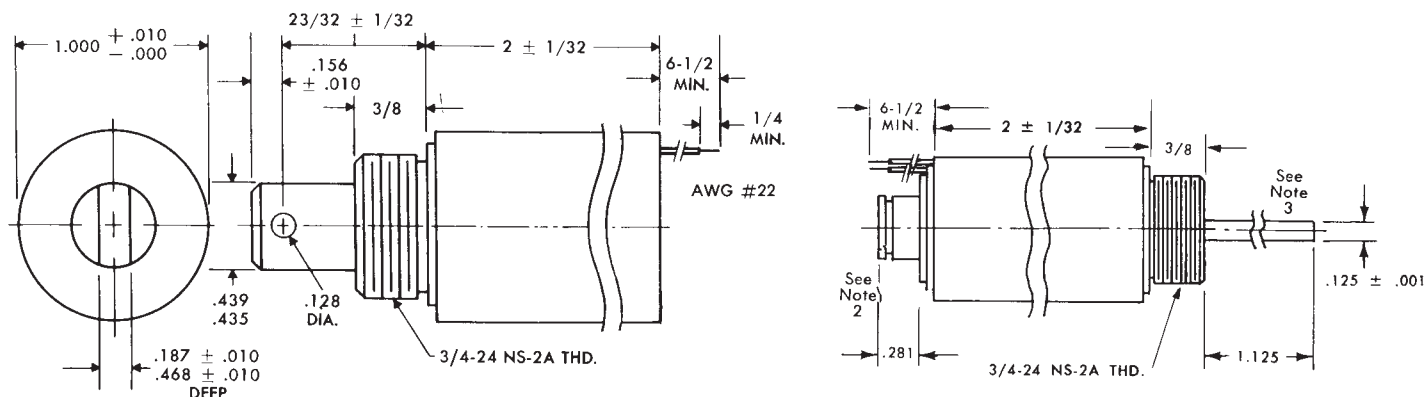
**Notes:**

1. Solenoid shown in energized position.
2. .281 Plunger configuration shown supplied for spring return only.
3. Largest size thread that may be threaded on push rod #5.
4. Push force approximately 90% of pull forces shown.

## Type C16-18

Specifications		Standard Coils		
Size	1" Diameter x 1 1/8" Long (From Mounting Surface)	Nominal Volts (D.C.)	Resistance (OHMS $\pm$ 10%) at 25°C	
Weight	4 Oz. Max.		Continuous Duty	Intermittent Duty
Mounting	3/4-24 Threaded Bushing (Nut and Lockwasher Supplied)	6	9	1.9
Dielectric Strength	500 VRMS	12	36	7.6
Insulation Material	Class "A" (105° C)	24	144	30.0
Life Expectancy	10 Million Cycles at Rated Load	110	3306	696.0
Nominal Coil Power	Continuous Duty—4 Watts Intermittent Duty (10%)—19 Watts (One Minute Max. on Time)	Other Coils and Duty Cycles Available Upon Request		



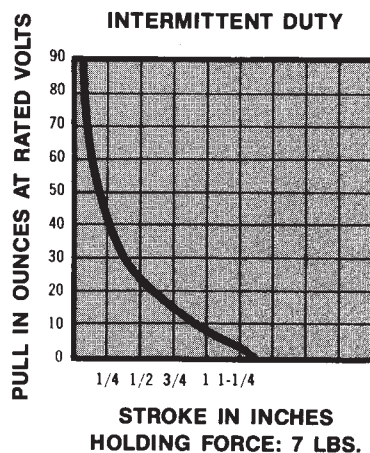
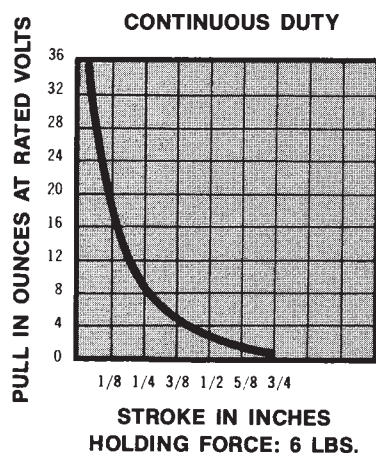


## Notes:

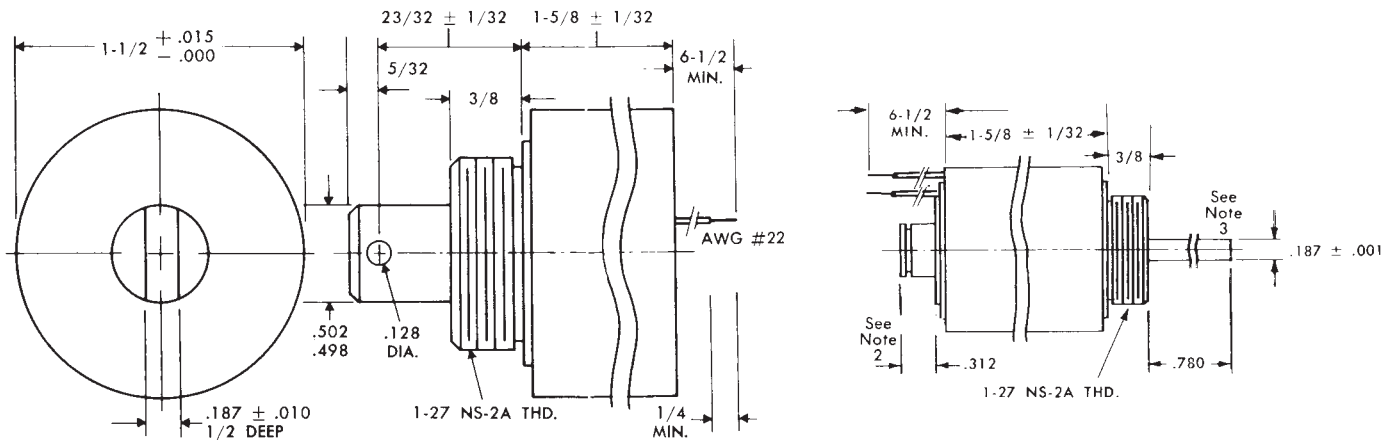
1. Solenoid shown in energized position.
2. .281 Plunger configuration shown supplied for spring return only.
3. Largest size thread that may be threaded on push rod #5.
4. Push force approximately 90% of pull forces shown.

## Type C16-32

Specifications		Standard Coils		
Size	1" Diameter x 2" Long (From Mounting Surface)	Nominal Volts (D.C.)	Resistance (OHMS ± 10%) at 25°C	
Weight	5½ Oz. Max.		Continuous Duty	Intermittent Duty
Mounting	¾-24 Threaded Bushing (Nut and Lockwasher Supplied)	6	6.5	.95
Dielectric Strength	500 VRMS	12	26.0	3.80
Insulation Material	Class "A" (105° C)	24	105.0	15.00
Life Expectancy	10 Million Cycles at Rated Load	110	2405	348.0
Nominal Coil Power	Continuous Duty—5.5 Watts Intermittent Duty (10%)—38 Watts (One Minute Max. on Time)	Other Coils and Duty Cycles Available Upon Request		



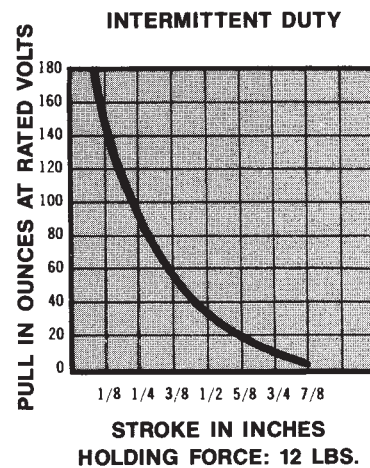
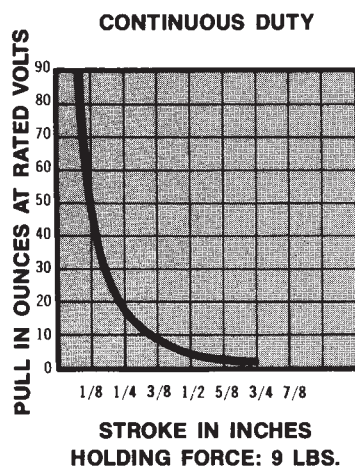


**Notes:**

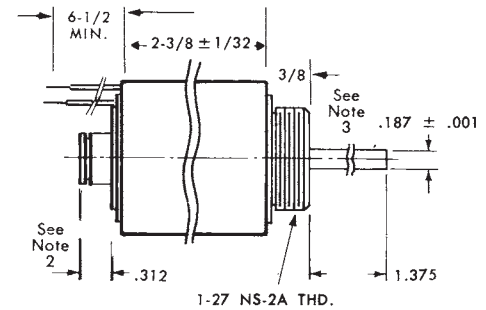
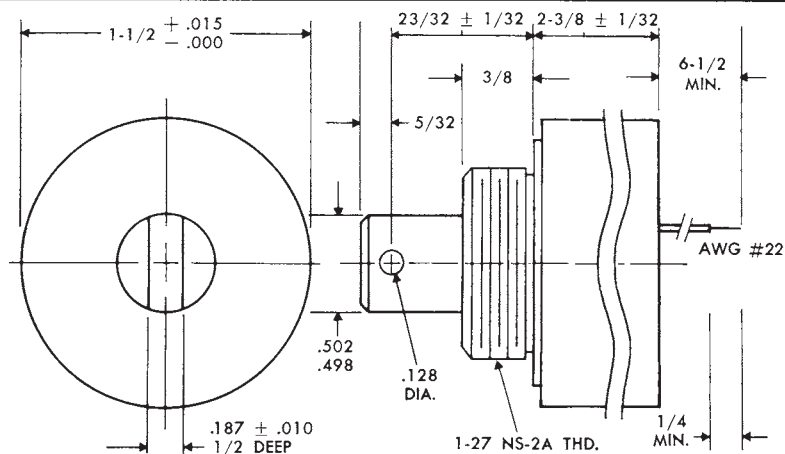
1. Solenoid shown in energized position.
2. .312 Plunger configuration shown supplied for spring return only.
3. Largest size thread that may be threaded on push rod #10.
4. Push force approximately 90% of pull forces shown.

**Type C24-26**

Specifications		Standard Coils		
Size	1½" Diameter x 1⅝" Long (From Mounting Surface)	Nominal Volts (D.C.)	Resistance (OHMS ± 10%) at 25°C	
Weight	10 Oz. Max.		Continuous Duty	Intermittent Duty
Mounting	1-27 Threaded Bushing (Nut and Lockwasher Supplied)	6	5.0	.9
Dielectric Strength	500 VRMS	12	20.6	3.6
Insulation Material	Class "A" (105° C)	24	82.0	14.0
Life Expectancy	10 Million Cycles at Rated Load	110	1890.0	331.0
Nominal Coil Power	Continuous Duty—7 Watts Intermittent Duty (10%)—40 Watts (One Minute Max. on Time)	Other Coils and Duty Cycles Available Upon Request		







## Notes:

1. Solenoid shown in energized position.
2. .312 Plunger configuration shown supplied for spring return only.
3. Largest size thread that may be threaded on push rod #10.
4. Push force approximately 90% of pull forces shown.

## Type C24-38

Specifications		Standard Coils		
Size	1½" Diameter x 2¾" Long (From Mounting Surface)	Nominal Volts (D.C.)	Resistance (OHMS ± 10%) at 25°C	
Weight	18 Oz. Max.		Continuous Duty	Intermittent Duty
Mounting	1-27 Threaded Bushing (Nut and Lockwasher Supplied)	6	3.6	.6
Dielectric Strength	500 VRMS	12	14.5	2.4
Insulation Material	Class "A" (105° C)	24	58.0	9.6
Life Expectancy	10 Million Cycles at Rated Load	110	1323.0	220.0
Nominal Coil Power	Continuous Duty—10 Watts Intermittent Duty (10%)—60 Watts (One Minute Max. on Time)	Other Coils and Duty Cycles Available Upon Request		

