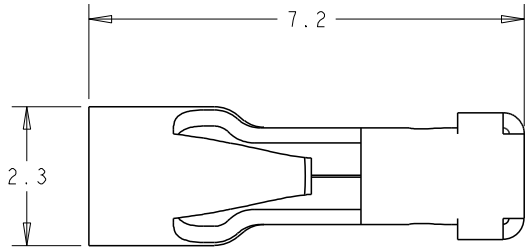


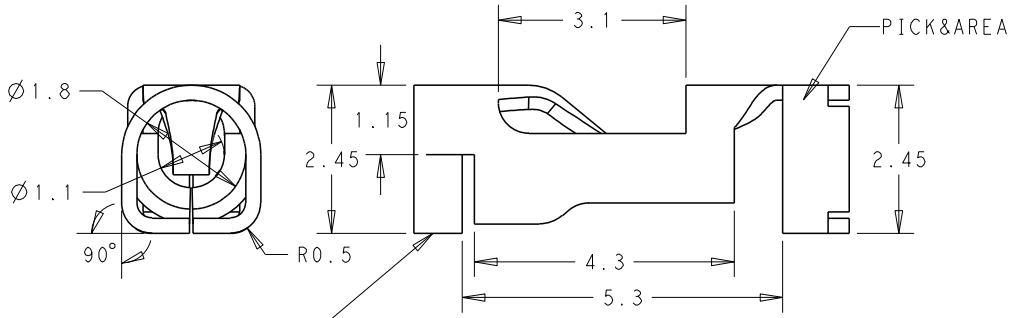
THIS DRAWING IS UNPUBLISHED. RELEASED FOR PUBLICATION 20  
 (C) COPYRIGHT 20 BY - ALL RIGHTS RESERVED.

REVISIONS					
P	LTR	DESCRIPTION	DATE	DWN	APVD
A		ECR-15-012172, RELEASE PRODUCTION VERSION	17AUG2015	GF	SM
A1		ECR-15-012489, UPDATE NOTE DESCRIPTION	24AUG2015	GF	SM

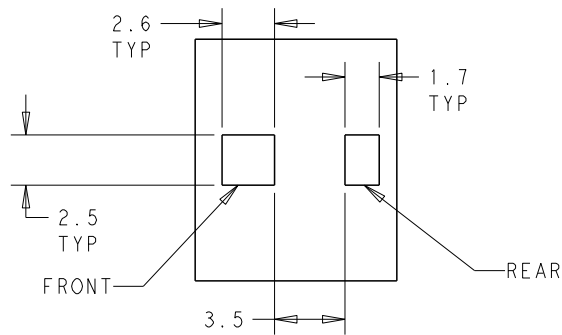


NOTES :

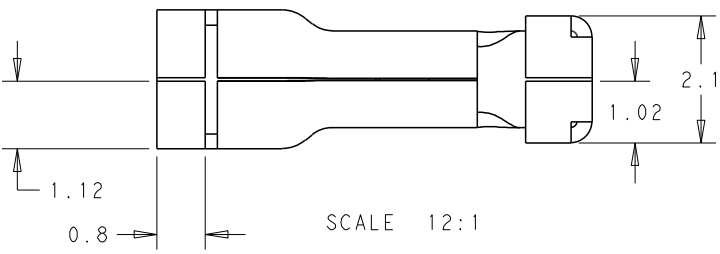
- MATERIALS AND FINISH:  
 - CONTACTS: COPPER ALLOY, FINISH: TIN OVER NICKEL UNDERPLATE
- MUST COMPLY WITH DIRECTIVE 2002/95/EC (ROHS)
- WIRE TYPES AND SIZES ACCEPTED  
 WIRE SIZE: 20AWG SOLID & STRANDED( CONDUCTOR NO:7)  
 22AWG SOLID & STRANDED( CONDUCTOR NO:7)  
 24AWG SOLID  
 TIN-DIPPED FOR ALL STRANDED WIRE  
 MAX INSULATION OD: 1.75mm MAX.  
 STRIP LENGTH: 5.5+/-0.3mm
- PACKAGED IN TAPE AND REEL



FRONT



RECOMMENDED PCB LAYOUT



SCALE 12:1

P/N:2834010-3

THIS DRAWING IS A CONTROLLED DOCUMENT.		DWN	24AUG2015		 TE Connectivity
		CHK	24AUG2015		
		APVD	24AUG2015		
		NAME	XU XIANG		
DIMENSIONS:		TOLERANCES UNLESS OTHERWISE SPECIFIED:		PRODUCT SPEC	
mm				108-137049	
		0 PLC ±- 1 PLC ±0.20 2 PLC ±0.13 3 PLC ± 4 PLC ± ANGLES ±-		APPLICATION SPEC	
MATERIAL		FINISH		114-137049	
				WEIGHT -	
CUSTOMER DRAWING				SIZE	RESTRICTED TO
				A3	-
				CAGE CODE	DRAWING NO
				-	C=2834010
				SCALE	SHEET
				12:1	1 OF 1
				REV	A1