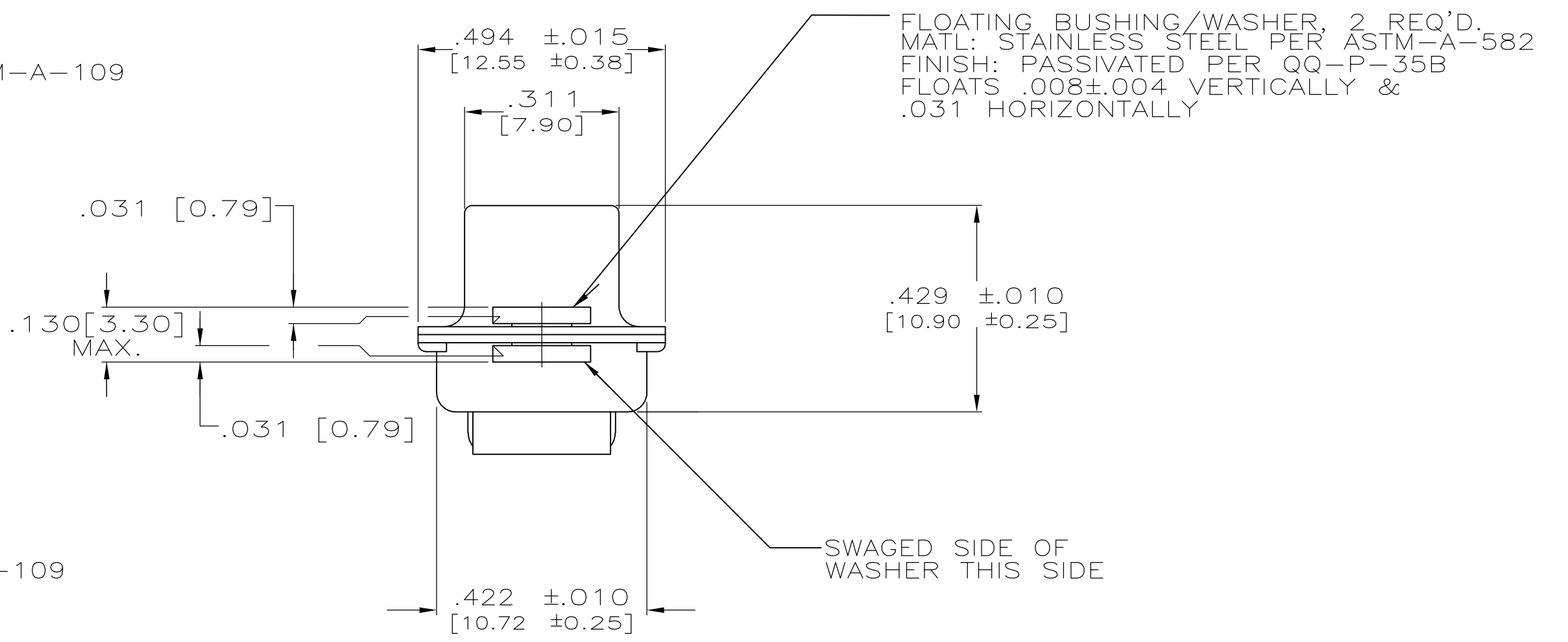
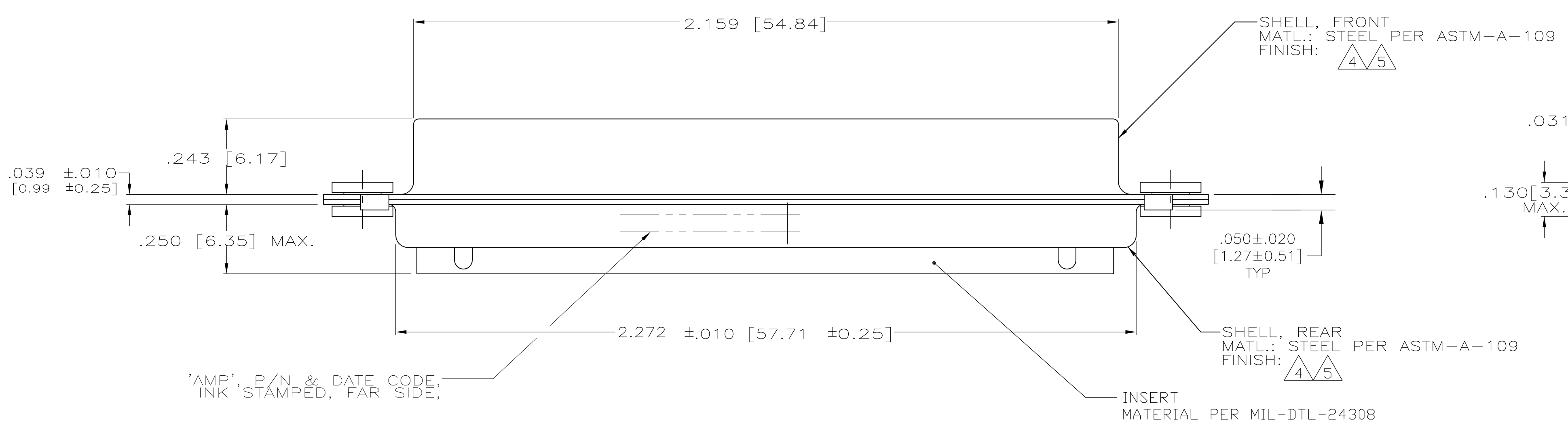
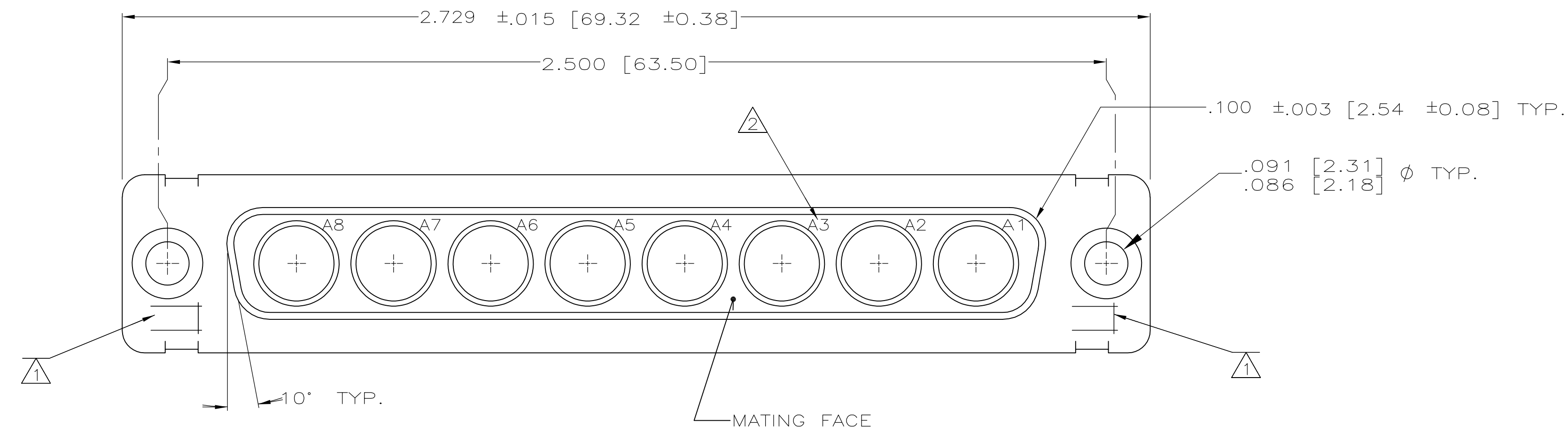


LOC		DIST		REVISIONS			
P	LTR	DESCRIPTION	DATE	DMN	APVD		
C		REV PER ECO 15-005929	5-13-15	CT	DM		



- $\triangle 1$ UL/CSA DESIGNATION STAMPED IN THIS AREA, OPTIONAL.
- $\triangle 2$ RAISED NUMBERS FOR IDENTIFICATION OF CIRCUIT HOLES.
- 3. CONTACTS NOT SUPPLIED WITH ASSEMBLY. CONTACTS TO BE PURCHASED SEPARATELY.
- $\triangle 4$ FINISH: CADMIUM PER QQ-P-416.
- $\triangle 5$ FINISH: ZINC PLATED PER ASTM-B-633 .000200-.000400 THK WITH SUPPLEMENTARY CHROMATE (Cr3+).

$\triangle 5$	5-447720-1
$\triangle 4$	447720-1
NOTE	PART NO

THIS DRAWING IS A CONTROLLED DOCUMENT.		DIN 2-14-91	C.C. THOMAS	
DIMENSIONS: INCHES		TOLERANCES UNLESS OTHERWISE SPECIFIED:	NAME	
0 PLC	± -	PRODUCT SPEC	RECEPTACLE ASSEMBLY,	
1 PLC	± -	APPLICATION SPEC	-	
2 PLC	± -	SIZE	A1	00779
3 PLC	± .005 [0.13]	WEIGHT	C=447720	
4 PLC	± -	CUSTOMER DRAWING	SCALE 1:1	SHEET 1 OF 1
ANGLES	± -			REV C