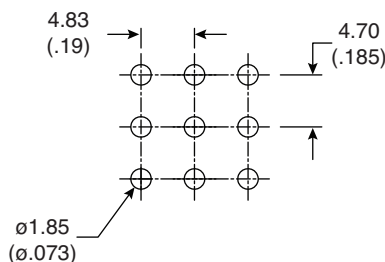
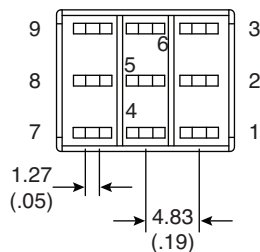
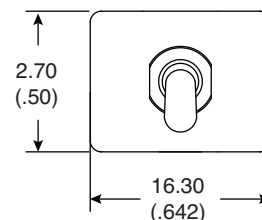
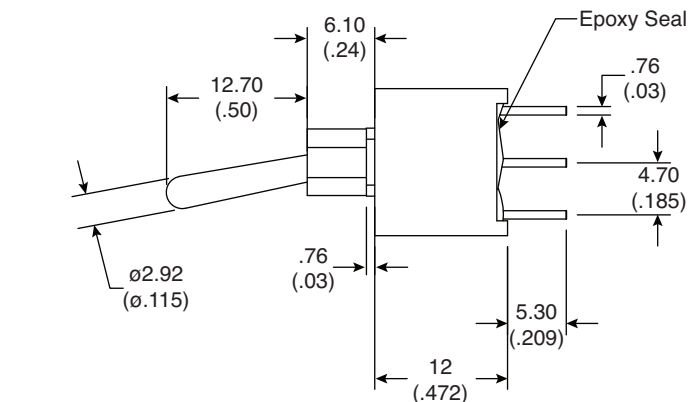
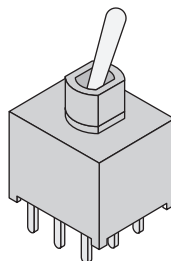


## Dimensions: mm (in.)



P.C. Mounting

POS.1	POS.2
ON	(ON)
2-3,5-6,8-9	2-1,5-4,8-7

Switch Function

**Electrical Specifications:**

- Contact resistance: 10mΩ max. initial @ 2-4VDC 100mA
- Insulation resistance: 1,000MΩ min.
- Dielectric strength: 1,000 V RMS@sea level
- Rating: 2A / 250VAC; 5A / 120VAC or 28VDC

**Mechanical Specifications:**

- Mechanical life: 30,000 make-and-break cycles
- Operating temperature: -30°C to 85°C

**Note:**

- RoHS Compliant by Exemption

**Soldering Process:**

- Manual Soldering: Use a soldering iron of 30 watts, controlled at 350°C approximately 5 sec. while applying Solder.
- Wave Soldering: Recommended soldering temperature: 260±5°C  
Duration of solder immersion: 5±1 sec.  
(PCB is 1.6mm in thickness)

**Sealed Miniature Toggle Switch**  
108-1A32T1281-EVX

**Mountain**  
**Switch**