

# "High Frequency Ceramic Solutions"

**LNB Diplexer, 1175/1925 MHz, EIA 1210, SMD**

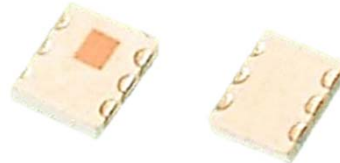
**P/N 1175DP41B1925**

Detail Specification: 2/11/2014

Page 1 of 4

## General Specifications

Part Number	1175DP41B1925			
Center Freq. (MHz)	1175	1925		
Passband (MHz)	900-1450	1650-2200		
Insertion Loss (dB)	1.62 typ/2.2 max. (25°C) 2.5 max. (-40to+ 25°C)	1.65 typ/2.2 max. (25°C) 2.5 max. (-40to+ 25°C)		
Return Loss	-9.5 dB (min)	-9.5 dB (min)		
Attenuation (db)	33 typ (25 min.) @ 1650 to 2200MHz	30 typ (24 min.) @ 900 to 1450MHz	Impedance	50Ω (Terminals 1, 3, and 5)
Ripple (db)	1.33 typ. (1.6 max.) @ 900 to 1450MHz 25MHz Ripple: 0.27 typ. (0.40max)	1.17 typ. (1.6 max.) @ 1650-2200MHz 25MHz Ripple: 0.24 typ. (0.40max)	Power Capacity	500mW max. (CW)
Recommended Storage Cond.	+5 to +35 °C, Humidity 45 to 75%RH		Storage Period	18 months max.
			Reel Quantity	2,000
			Operating Temperature Range	-40°C to +85°C

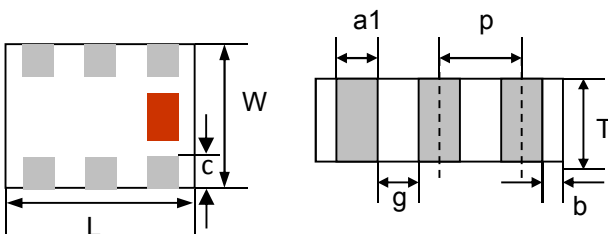


## Part Number Explanation

P/N Suffix	Packing Style	Bulk	Suffix = S	eg. 1175DP41A1925S
		T & R (2000pcs)	Suffix = E	eg. 1175DP41A1925E
	Termination style	100% Tin	Suffix = None	eg. 1175DP41A1925(E or S)
	Evaluation Board	1175DP41B1925-EBSMA		

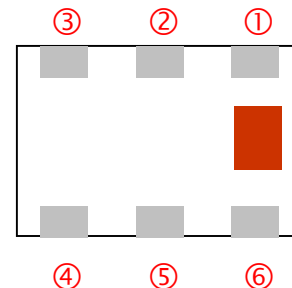
## Mechanical Dimensions

	In	mm
L	0.126 ± 0.008	3.20 ± 0.20
W	0.098 ± 0.008	2.50 ± 0.20
T	0.039 max.	1.00 max.
a	0.022 ± 0.006	0.55 ± 0.15
b	0.004 min.	0.1 min.
c	0.016 ± 0.004/0.00	0.40 ± 0.1 /-0.2
g	0.018 ± 0.006	0.45 ± 0.15
p	0.039 ± 0.004	1.00 ± 0.10



## Terminal Configuration

No.	Function
1	(LPF) Lower Freq. Port
2	GND
3	(HPF) Higher Freq. Port
4	GND
5	Common Port
6	GND



Ver. 1.2

4001 Calle Tecate • Camarillo, CA 93012 • TEL 805.389.1166 FAX 805.389.1821

2014 Johanson Technology, Inc. All Rights Reserved

[www.johansontechnology.com](http://www.johansontechnology.com)

# "High Frequency Ceramic Solutions"

LNB Diplexer, 1175/1925 MHz, EIA 1210, SMD

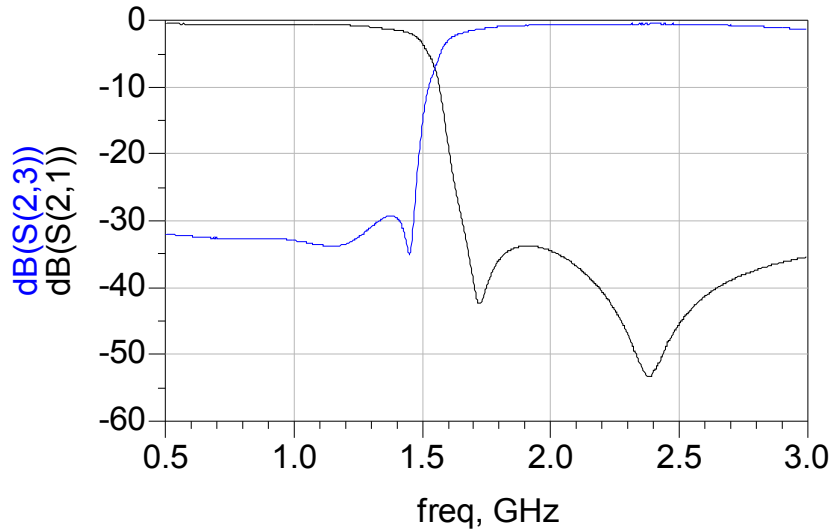
P/N 1175DP41B1925

Detail Specification: 2/11/2014

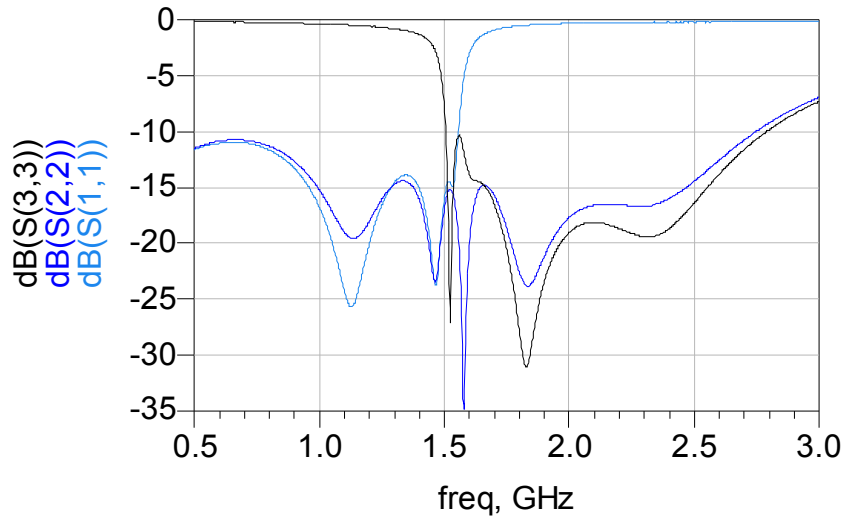
Page 2 of 4

## Typical Electrical Performance (T=25°C)

### Attenuation



### Return Loss



The contents of this data sheet are subject to change without notice. Please confirm the specifications and delivery conditions when placing your order. All sales are subject to Johanson Technology, Inc. terms and conditions.



[www.johansontechnology.com](http://www.johansontechnology.com)

4001 Calle Tecate • Camarillo, CA 93012 • TEL 805.389.1166 FAX 805.389.1821

Ver. 1.2

2014 Johanson Technology, Inc. All Rights Reserved

# "High Frequency Ceramic Solutions"

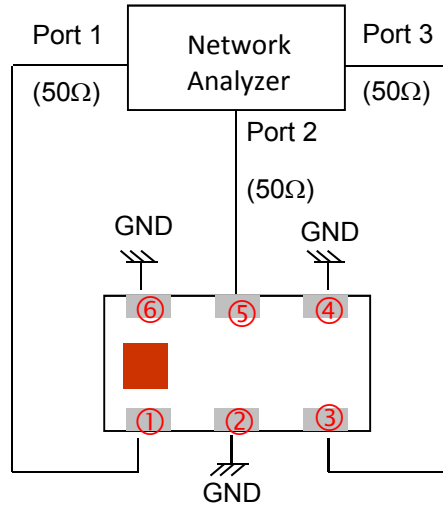
LNB Diplexer, 1175/1925 MHz, EIA 1210, SMD

P/N 1175DP41B1925

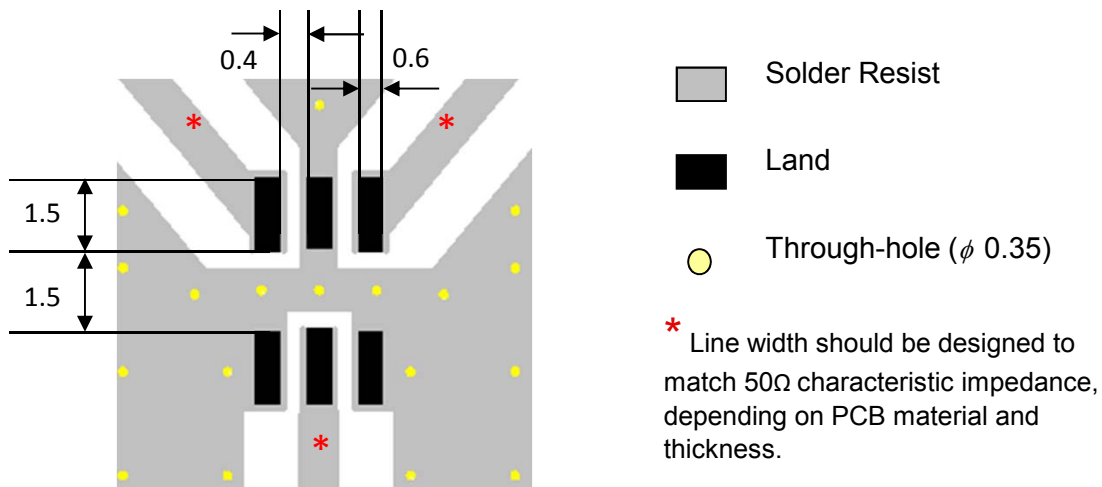
Detail Specification: 2/11/2014

Page 3 of 4

## Measuring Diagram



## Mounting Considerations



The contents of this data sheet are subject to change without notice. Please confirm the specifications and delivery conditions when placing your order. All sales are subject to Johanson Technology, Inc. terms and conditions.



[www.johansontechnology.com](http://www.johansontechnology.com)

4001 Calle Tecate • Camarillo, CA 93012 • TEL 805.389.1166 FAX 805.389.1821

Ver. 1.2

2014 Johanson Technology, Inc. All Rights Reserved

# "High Frequency Ceramic Solutions"

**LNB Diplexer, 1175/1925 MHz, EIA 1210, SMD**

**P/N 1175DP41B1925**

Detail Specification: 2/11/2014

Page 3 of 4

## More Diplexers

[www.johansontechnology.com/diplexers](http://www.johansontechnology.com/diplexers)

## RoHS Compliance

[www.johansontechnology.com/technical-notes/rohs-compliance.html](http://www.johansontechnology.com/technical-notes/rohs-compliance.html)

## Packaging information

[www.johansontechnology.com/ipcpackaging.html](http://www.johansontechnology.com/ipcpackaging.html)

## Soldering Information

[www.johansontechnology.com/ipcsoldering-profile](http://www.johansontechnology.com/ipcsoldering-profile)

## Layout Files, s-parameters and any other technical questions

[www.johansontechnology.com/component/techquestion/?Itemid=407](http://www.johansontechnology.com/component/techquestion/?Itemid=407)

## MSL Info

[www.johansontechnology.com/technical-notes/msl-rating.html](http://www.johansontechnology.com/technical-notes/msl-rating.html)

## Recommended Storage Condition and Max Shelf Life

[www.johansontechnology.com/ipcstorage-shelflife](http://www.johansontechnology.com/ipcstorage-shelflife)

## Antenna layout and tuning techniques

[www.johansontechnology.com/tuning](http://www.johansontechnology.com/tuning)

## Antenna layout review, tuning, and characterization services

[www.johansontechnology.com/ipcantennaservices](http://www.johansontechnology.com/ipcantennaservices)

The contents of this data sheet are subject to change without notice. Please confirm the specifications and delivery conditions when placing your order. All sales are subject to Johanson Technology, Inc. terms and conditions.

