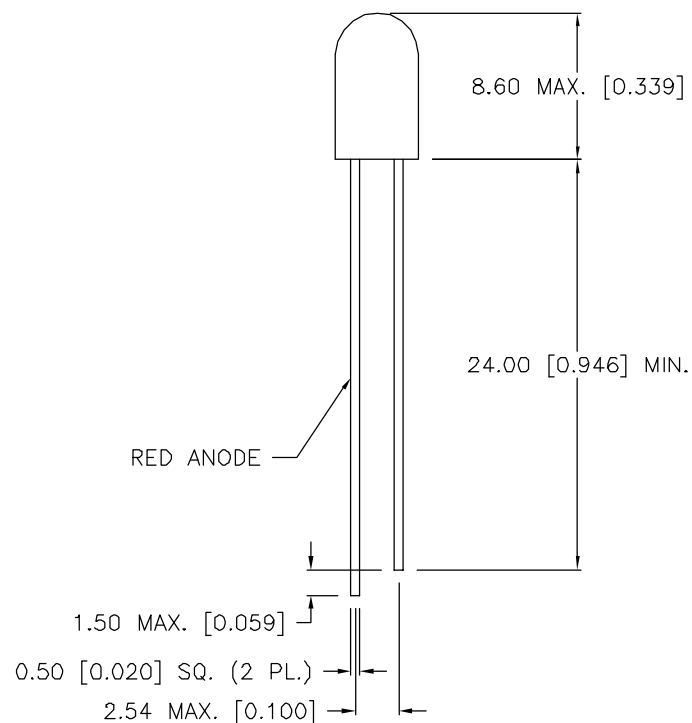
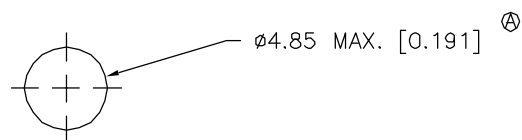


| DATE    | REVISIONS                                  | REV |
|---------|--|-----|
| 9-16-92 | REDRAWN, CHG'D. DIA FROM 4.8 TO 4.85 MAX./ | A   |
| 9-12-95 | REDRAWN, UPDATED SAFE OPER. SPECS./        | B   |

DRAWING NUMBER  
SSL-LX509F3IGW

REV  
B



ELECTRO-OPTICAL CHARACTERISTICS  $T_A = 25^\circ\text{C}$   $I_f = 20\text{mA}$

| PARAMETER             | MIN                  | TYP                      | MAX | UNITS     | TEST COND              |
|-----------------------|----------------------|--------------------------|-----|-----------|------------------------|
| PEAK WAVELENGTH       |                      | 635 (RED)<br>565 (GREEN) |     | nm        |                        |
| FORWARD VOLTAGE (R/G) |                      | 2.0                      | 2.8 | $V_f$     |                        |
| REVERSE VOLTAGE       | 5.0                  |                          |     | $V_r$     | $I_r = 100\mu\text{A}$ |
| AXIAL INTENSITY (R/G) |                      | 12                       |     | mcd       | $I_f = 20\text{mA}$    |
| VIEWING ANGLE         |                      | 80                       |     | $2\theta$ |                        |
| EMITTED COLOR         | RED/GREEN            |                          |     |           |                        |
| EPOXY LENS FINISH     | MILKY WHITE DIFFUSED |                          |     |           |                        |

Ⓢ LIMITS OF SAFE OPERATION AT  $25^\circ\text{C}$

| PARAMETER                      | MAX        | UNITS                |
|--------------------------------|------------|----------------------|
| PEAK FORWARD CURRENT*(R/G)     | 150        | mA                   |
| STEADY CURRENT (R/G)           | 30/25      | mA                   |
| POWER DISSIPATION (R/G)        | 105        | mW                   |
| DERATE FROM $25^\circ\text{C}$ | -1.2       | mW/ $^\circ\text{C}$ |
| OPERATING, STORAGE TEMP        | -40 TO +85 | $^\circ\text{C}$     |
| LEAD SOLDERING TEMP            | +260       | $^\circ\text{C}$     |
| 2.0mm FROM BODY                |            | 3 SEC. MAX           |

\*  $t < 10\mu\text{s}$

**RELIABILITY NOTE**  
OUR MANY YEARS OF EXPERIENCE DATA ACCUMULATION INDICATE THAT SOLDER HEAT IS A MAJOR CAUSE OF EARLY AND FUTURE FAILURE. PLEASE PAY ATTENTION TO YOUR SOLDERING PROCESS.



292 E. HELLEN ROAD  
PALATINE, ILLINOIS 60067  
(708) 359-2790

CONFIDENTIAL INFORMATION  
THE INFORMATION CONTAINED IN THIS DOCUMENT IS THE PROPERTY OF LUMEX OPTO/COMPONENTS, INC. EXCEPT AS SPECIFICALLY AUTHORIZED IN WRITING BY LUMEX OPTO/COMPONENTS, INC., THE HOLDER OF THIS DOCUMENT SHALL KEEP ALL INFORMATION CONTAINED HEREIN CONFIDENTIAL AND SHALL PROTECT SAME IN WHOLE OR IN PART FROM DISCLOSURE AND DISSEMINATION TO ALL THIRD PARTIES.

|               |      |        |       |
|---------------|------|--------|-------|
| DATE: 4-10-92 | DWN: | CHK'D: | APPD: |
| SCALE: N/A    |      |        |       |

T-5 (T-1 3/4) FLANGELESS LED, BICOLOR  
MILKY WHITE DIFFUSED

PAGE 1 OF 1

DRAWING NUMBER  
SSL-LX509F3IGW

REV  
B