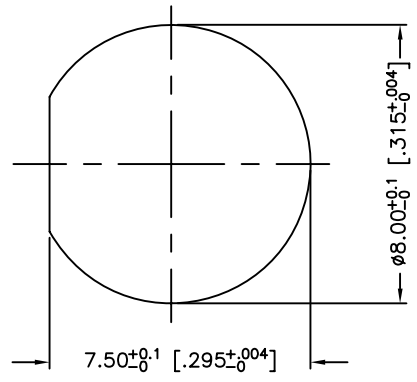
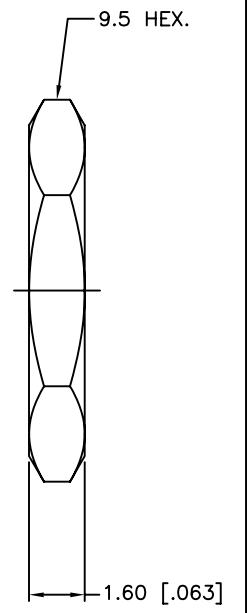
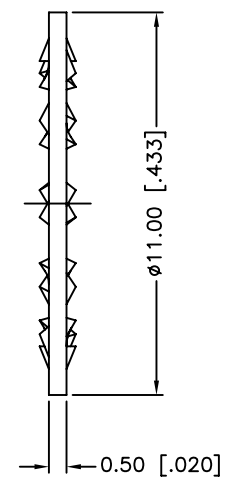
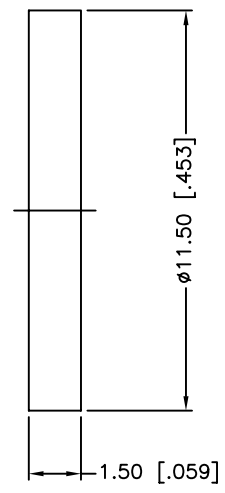
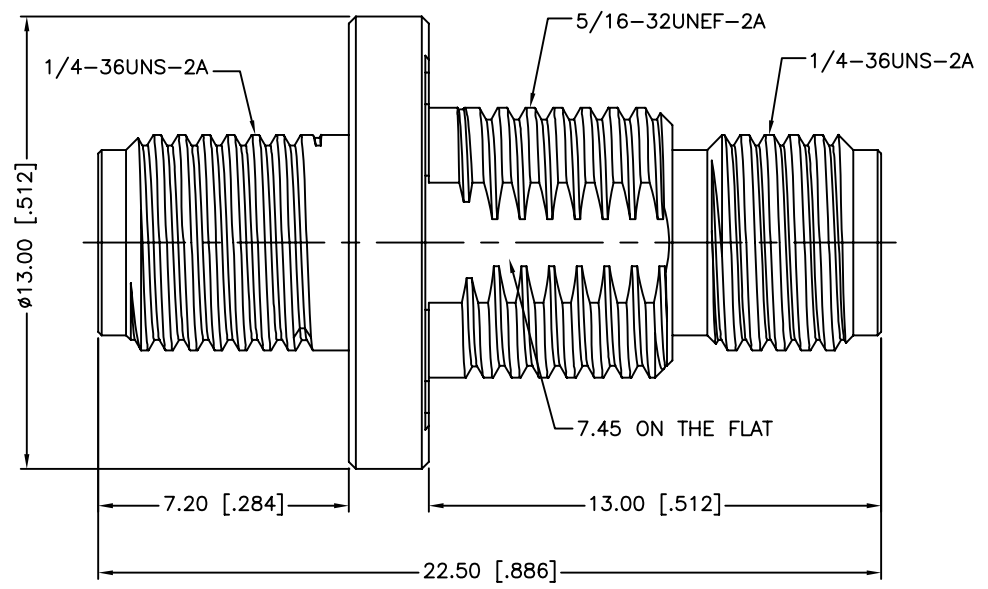


| REV. | DATE     | ECR NO. | DESCRIPTION     |
|------|----------|---------|-----------------|
| NC   | 06/12/09 | XXXXXX  | INITIAL RELEASE |



RECOMMENDED MOUNTING HOLE



1. SEALING REQUIREMENT: IP-68 MUST WITHSTAND 3' DEPTH OF WATER FOR ONE HOUR WITHOUT ANY SIGNS OF LEAKAGE
2. MAX. PANEL THICKNESS= 3mm

| 7           | HEX NUT     | BRASS          | GOLD    | 1 |
|-------------|-------------|----------------|---------|---|
| 6           | LOCK WASHER | BRASS          | GOLD    | 1 |
| 5           | GASKET      | SILICONE       | RED     | 1 |
| 4           | CONTACT PIN | BER. COPPER    | GOLD    | 1 |
| 3           | O-RING      | SILICON RUBBER | RED     | 1 |
| 2           | INSULATOR   | PTFE           | NATURAL | 1 |
| 1           | BODY        | BRASS          | GOLD    | 1 |
| DESCRIPTION | MATERIAL    | FINISH         | QTY     |   |

UNLESS OTHERWISE SPECIFIED DIMENSIONS ARE IN MILLIMETERS. DIMENSIONS IN [ ] ARE IN INCHES AND FOR CUSTOMER REFERENCE ONLY.

UNLESS OTHERWISE SPECIFIED TOLERANCES FOR MILLIMETERS ARE:  
0.5 - 8mm ± 0.20mm  
8 - 30mm ± 0.40mm  
30 - 120mm ± 0.50mm

UNLESS OTHERWISE SPECIFIED TOLERANCES FOR INCHES ARE:  
.020 - .315 = ± 0.007"  
.315 - 1.180 = ± 0.015"  
1.180 - 4.724 = ± 0.020"

DO NOT SCALE DRAWING

| APPROVALS                        | DATE     |
|----------------------------------|----------|
| DRAWN M.ZHANG                    | 06/12/09 |
| CHECKED                          |          |
| ISSUED                           |          |
| SHEET 1 OF 1                     |          |
| CAD FILE C:/CONNEX/132170-12.DWG |          |

**Amphenol Connex**

PART DESCRIPTION  
**SMA BULKHEAD JACK TO JACK ADAPTOR ( IP 68)**

PART NO. **132170-12**

DWG. NO. 132170-12.DWG    REV. NC    SIZE A    SCALE NA