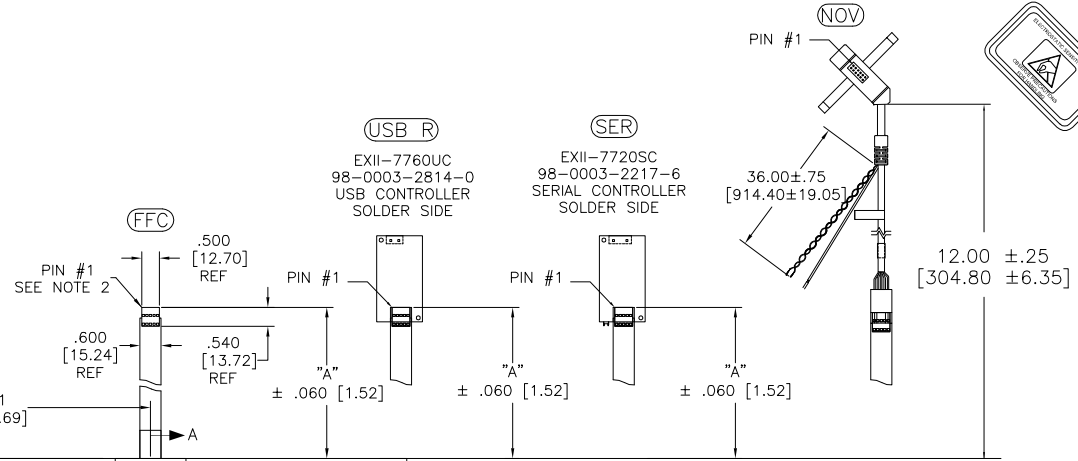
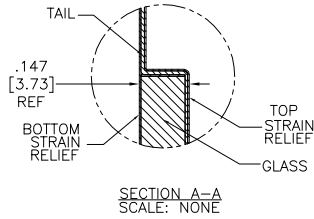


OGA DIAGONAL: 20.46 [519.68]
 VA DIAGONAL: 19.75 [501.58]
 PA DIAGONAL: 18.61 [472.82]

| TOP LEVEL NUMBER | US NUMBER | TYPE | DIM "A" (TOTAL GLASS TO CONNECTOR) | A/G FINISH | PROD SPEC |
|------------------|----------------|-------|------------------------------------|------------|-----------|
| 17-8511-203 | 98-0003-2609-4 | FFC | 4.27" [108.46] | AG500 | 23655 |
| 17-8511-221 | 98-0003-2613-6 | SER | 4.27" [108.46] | AG500 | 23655 |
| 17-8511-206 | 98-0003-2611-0 | NOV | SEE DWG | AG500 | 23655 |
| 17-8511-218 | 98-0003-3156-5 | USB R | 4.27" [108.46] | AG500 | 23655 |
| 17-8511-205 | 98-0003-2610-2 | FFC | 8.00" [203.20] | AG500 | 23655 |
| 17-8511-226 | 98-0003-3157-3 | USB R | 8.00" [203.20] | AG500 | 23655 |
| 17-8511-227 | 98-0003-2615-1 | SER | 8.00" [203.20] | AG500 | 23655 |



.147±.020 [3.73±.51]
 TOTAL THICKNESS
 OF GLASS, CABLE
 AND STRAIN RELIEF

12.933 [328.50] OUTER GLASS AREA
 12.393 [314.78] VIEWING AREA
 11.687 [296.85] PRECISION AREA

.682 [17.32]
 .240±.020 [6.10±.51]
 14.489 [368.02] PRECISION AREA
 15.374 [390.50] VIEWING AREA
 15.854 [402.69] OUTER GLASS AREA

| PINOUT | |
|--------|------|
| 1 | LL |
| 2 | UL |
| 3 | SHLD |
| 4 | UR |
| 5 | LR |

| REV | CHANGE NOTICE | DATE | DRW |
|-----|-----------------------|------|-----|
| H | REVISED PER CO 036256 | 4/13 | SB |
| G | REVISED PER CO 033533 | 2/12 | SB |
| F | REVISED PER CO 033457 | 9/11 | SB |

- NOTES:
1. WEIGHT OF GLASS IN GRAMS: 1008±10%
 2. NICOMATIC HOUSING P/N: OLO5
 NICOMATIC RECEPTACLES (PINS) MATTE TIN PLATED P/N: 14106-12
 HOUSING ORIENTED WITH LATCH DOWN

UNITS INCHES [MM]

TOLERANCES UNLESS OTHERWISE SPECIFIED
 .X ±
 .XX ±.03 [.76]
 .XXX ±.015 [.38]
 ANGLES ±1°

THIRD ANGLE PROJECTION

DO NOT SCALE DRAWING

SCALE 1 = 1

3M 3M TOUCH SYSTEMS
 METHUEN, MA
 USA

© COPYRIGHT 2004
 THIS DOCUMENT IS COPYRIGHTED PROPERTY OF THE 3M COMPANY AND MAY NOT BE REPRODUCED WITHOUT 3M WRITTEN PERMISSION OR USED OR DISCLOSED FOR OTHER THAN 3M AUTHORIZED PURPOSES.

DRAWN K CROWLEY 9/05

TITLE

MARKETING DRAWING
 SCT32NN 19.75"

CAD FORMAT AUTOCAD SHEET 1 OF 1

SIZE C DOCUMENT NO. 28382-MKT REV H