

FOPC-02-02-003-12-01

OPA-S-1-F

FOPC, OPA SERIES

OPTICAL PATCH CABLE AND ADAPTOR

SPECIFICATIONS

For complete specifications see
www.samtec.com?FOPC

Compliant Specifications:
TIA-604-5-D (FOCIS 5)
TIA-568-C.3
IEC-61754-7-1

FOPC

END 1

END 2

CABLE LENGTH

FIBERS

CONSTRUCTION

–01
= MTP Male

–02
= MTP Female

–01
= MTP Male

–02
= MTP Female

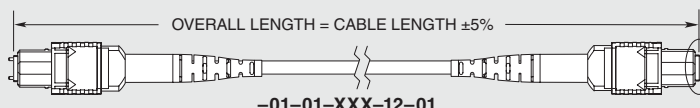
–003
= 3 Meters

–010
= 10 Meters

–100
= 100 Meters
(Other lengths
available as
custom parts)

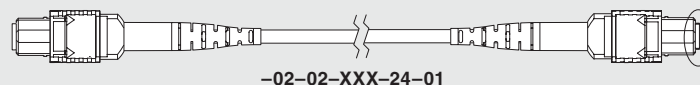
–12,
–24

–01
= 3 mm Round Jacket



–01-01-XXX-12-01

12 FIBER



–02-02-XXX-24-01

24 FIBER

Note: Some lengths, styles
and options are non-standard,
non-returnable.

SPECIFICATIONS

For complete specifications see
www.samtec.com?OPA

Compliant Specifications:
TIA-604-5-D (FOCIS 5)
IEC-61754-7

**Recommended
Panel Thickness:**
(1.75 mm) .069"
(The OPA can be installed
with any panel thickness
but mounting hardware is
needed for any thickness
that is not (1.75 mm) .069".
Contact the Optics Group at
Optics@samtec.com for
questions about panel thickness
and mounting hardware.)

OPA

PORTS

KEY

FLANGE

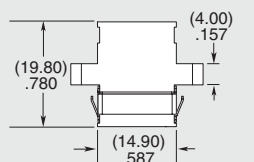
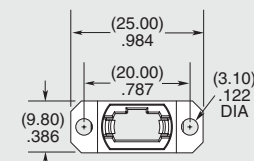
–S
= Single

–D
= Double

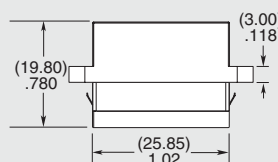
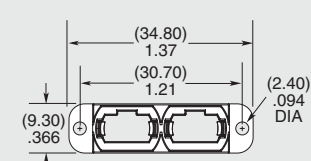
–1
= Opposed

–2
= Aligned

–F
= Full



–S



–D

Note: Some lengths, styles
and options are non-standard,
non-returnable.

Due to technical progress, all designs, specifications and components are subject to change without notice.

WWW.SAMTEC.COM

All parts within this catalog are built to Samtec's specifications.

Customer specific requirements must be approved by Samtec and identified in a Samtec customer-specific drawing to apply.