

4

3

2

1

THIS DRAWING IS UNPUBLISHED.

RELEASED FOR PUBLICATION

© COPYRIGHT

ALL RIGHTS RESERVED.

LOC

DIST


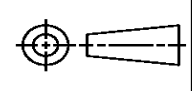
REVISIONS


P	LTR	DESCRIPTION	DATE	DWN	APVD
	A1	ECR-14-002797	26FEB2014	GK	HMR

REPLACED BY OCEAN STYLE APPLICATOR PART
NUMBER 2151042-5

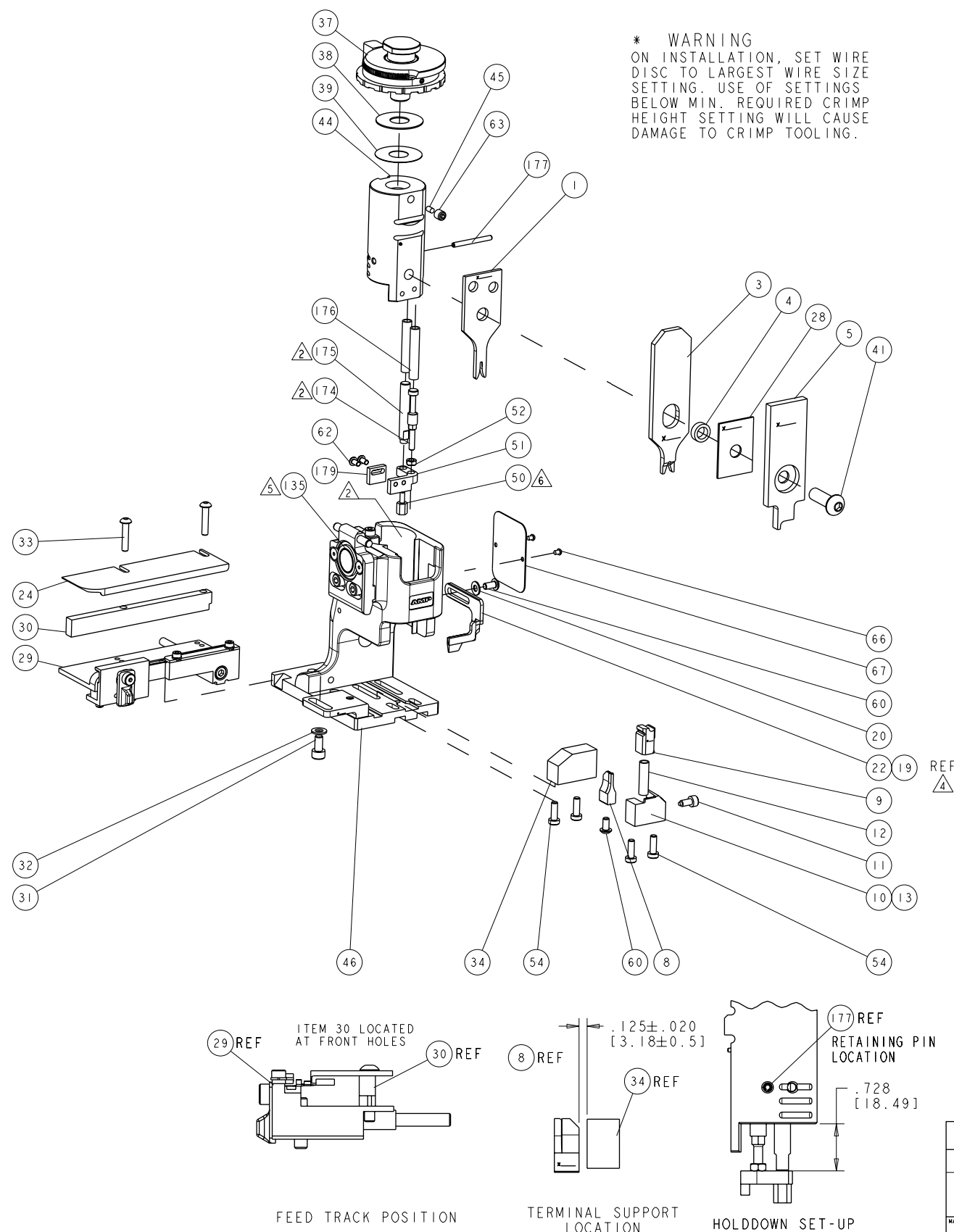
FOR REPLACEMENT PARTS FOR APPLICATOR 2034011
REFER TO ADDITIONAL PAGE(S). SPARE PARTS KIT (IF LISTED)
WILL REMAIN AVAILABLE.

THE REPLACEMENT OCEAN STYLE APPLICATOR HAS THE
SAME TERMINATOR/PRESS INTERFACE AS APPLICATOR
2034011

THIS DRAWING IS A CONTROLLED DOCUMENT.		DWN	GOPALAKRISHNA HV		 TE Connectivity		
DIMENSIONS:		CHK	RAGHAVENDRA				
		APVD	RAGHAVENDRA		NAME SIDE FEED SYSTEM III APPLICATOR		
		PRODUCT SPEC					
		APPLICATION SPEC					
MATERIAL		WEIGHT		SIZE	CAGE CODE	DRAWING NO	RESTRICTED TO
				A3		©- 2034011	
		CUSTOMER DRAWING		SCALE		SHEET 1 OF 2	REV A1


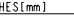


1. RECOMMENDED SPARE PARTS.
2. GREASE BEARING SURFACES LIGHTLY.
3. LUBRICATE DAILY PER THE APPLICATOR INSTRUCTION SHEET SUPPLIED WITH THE APPLICATOR.
4. ITEM 19 - OPTIONAL STRIPPER FOR BENCH MACHINE APPLICATIONS.
5. APPLICATOR SPECIFIC DATA TO BE ENTERED INTO BLANK MEMORY CHIP AT ASSEMBLY.
6. APPLY P/N 1-23419-5 LOCTITE(R) TO THREADS.



FEED FINGER 1901694-1		SET UP GAGE 1901067-1	LOC A	DIST 66	REVISIONS				
P	LTN	DESCRIPTION			DATE	OWN	APVD		
	A	RELEASED			26MAR2008	RD	TE		

-	1	1	1	1	1976053-2	LOCATER BLOCK, TERMINAL	179
-	1	1	1	1	1-993111-6	PIN, SLOTTED SPRING 3.0 X 30.0	177
-	2	2	2	2	3-22280-3	SPRING, COMPRESSION	176
-	1	1	1	1	1752353-1	GUIDE PIN, HOLLOW	175
-	1	1	1	1	1901680-1	GUIDE PIN, HOLLOW	174
-	REF	REF	REF	REF	SEE TABLE	MEMORY CHIP, PROGRAMMED	135
-	1	1	1	1	1633565-1	DOCUMENTATION PACKAGE	71
-	1	1	1	1	1976552-1	TAG, IDENTIFICATION	66
-	2	2	2	2	21017-1	SCREW, DRIVE	6
-	1	1	1	1	3-18031-0	SCR, SET, CUP POINT M6 X 6.0	63
-	2	2	2	2	1655785-9	SCR, BTN SKT HD CAP (M3 X 6)	62
-	2	2	2	2	1655785-1	SCR, BTN SKT HD CAP (M4 X 8)	60
-	4	4	4	4	1655783-3	SCR, CAP, SOC HD, LOW HEAD, M4 X 12	54
-	1	1	1	1	1-18030-0	NUT, HEX, REG M3.5	52
-	1	1	1	1	1-1901681-0	HOLDDOWN, TERMINAL	51
-	1	1	1	1	1-1752354-4	STANDOFF, HOLD-DOWN	50
-	1	1	1	1	1752300-1	SF SYSTEM III APPLICATOR	46
-	1	1	1	1	690191-1	PLUG, NYLON	45
-	1	1	1	1	1901069-1	RAM ASSEMBLY, SYSTEM III RETROFIT	44
-	1	1	1	1	2-1655785-3	SCR, BTN SKT HD CAP (M8 X 25)	41
-	1	1	1	1	690125-1	SHIM SUB-ASSY	39
-	1	1	1	1	469367-8	SHIM	38
-	1	1	1	1	879103-3	FINE ADJUST HEAD ASSEMBLY	37
-	1	1	1	1	1752356-3	SUPPORT, TERMINAL	34
-	2	2	2	2	3-1655785-3	SCR, BTN SKT HD CAP (M4 X 20)	33
-	1	1	1	1	18028-3	WASHER, FLAT, REG M5	32
-	1	1	1	1	5-1655316-3	SCR, SKT HD CAP, M5 X 10.0	31
-	1	1	1	1	1320908-4	SPACER, STRIP GUIDE	30
-	1	1	1	1	1901087-1	ASSEMBLY, STRIP GUIDE	29
-	1	1	1	1	1-455888-0	SPACER, CRIMPER	28
-	1	1	1	1	1320928-1	PLATE, STRIP GUIDE	24
-	1	1	1	1	1976045-1	STRIPPER	22
-	1	1	1	1	18028-2	WASHER, FLAT, REG M4	20
-	REF	REF	REF	REF	1752311-1	STRIPPER	19
-	1	-	1	-	1338684-1	SHEAR HOLDER, FRONT	13
-	1	1	1	1	3-22280-3	SPRING, COMPRESSION	12
-	1	1	1	1	356885-4	STOP, SHEAR	11
-	-	1	-	1	1320921-1	SHEAR HOLDER, FRONT, CUT	10
-	1	1	1	1	462006-1	FLOATING SHEAR, FRONT	9
1	2	2	1	1	2-1333225-0	ANVIL, COMBINATION	8
-	1	1	1	1	2-455889-0	DEPRESSOR, SHEAR	5
-	1	1	1	1	4-238011-2	BLOCK, CRIMPER SPACER	4
1	2	2	1	1	1752766-3	CRIMPER, INSULATION, SPECIAL	3
1	2	2	1	1	1-1673600-0	CRIMPER, WIRE	1

THIS DRAWING IS A CONTROL DOCUMENT FOR THE CUSTOMER'S INFORMATION IT IS SUBJECT TO CHANGE WITHOUT NOTICE AND THE CUSTOMER'S ORGANIZATION SHOULD BE CONTACTED FOR THE LATEST REVISION		OWN R. DOBSON 07JAN2008 CHECKED R. DOBSON 07JAN2008 APPROVED R. DOBSON 07JAN2008		 Tyco Electronics Harrisburg, PA 17105-3608		NO	
DIMENSIONS: [INCHES/mm]		TOLERANCES UNLESS OTHERWISE SPECIFIED:		NAME SIDE FEED SYSTEM IIII APPLICATOR		SIZE	
		0 PLC ±.0 1 PLC ±.0 2 PLC ±.0 3 PLC ±.0 4 PLC ±.0 4 RADIUS 4 ANGLES ±.0		PRODUCT SPEC - - - APPLICATION SPEC SEE TABLE		CAGE CODE 00779	
MATERIAL -		FINISH -		DRAWING NO 2034011		RESTRICTED TO -	
CUSTOMER DRAWING				SCALE 2.5		SHEET 1 OF 1	
WEIGHT -				REV A		REV A	