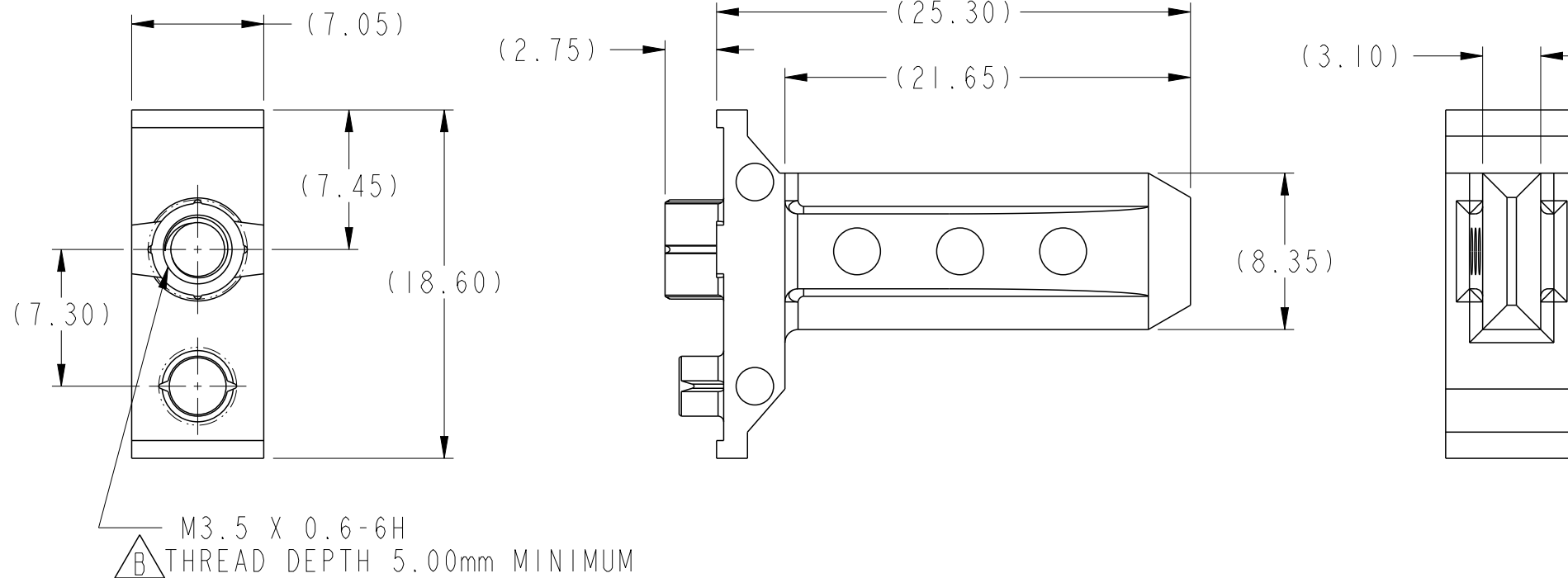
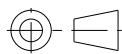
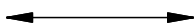
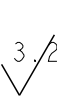



PRODUCT NUMBER

10066832-101LF



spec ref				dr	Chen-Hong Tan	2006/05/02	projection 	MM 	size	A4	scale	2:1
tolerance std ASME Y14.5 -	TOLERANCES UNLESS OTHERWISE SPECIFIED			eng	N Anandakumar	2013/04/08			ecn no	ELX-S-14283-1		
				chr	-	-			rel level			Released
				appr	Chen-Hong Tan	2013/04/15	product family		AirMax Accessories			
surface 3.2  ASME Y14.5	linear	0.X	±0.3		title 7.2mm GUIDE PIN 25.3mm LONG, W/ INTERNAL THREAD			dwg no	10066832			rev B
		0.XX	±0.10									
		0.XXX	±0.050									
				www.fci.com	cat. no.	-	Product - Customer Drw				sheet 1 of 2	

Part File - REV C - 2009-06-09

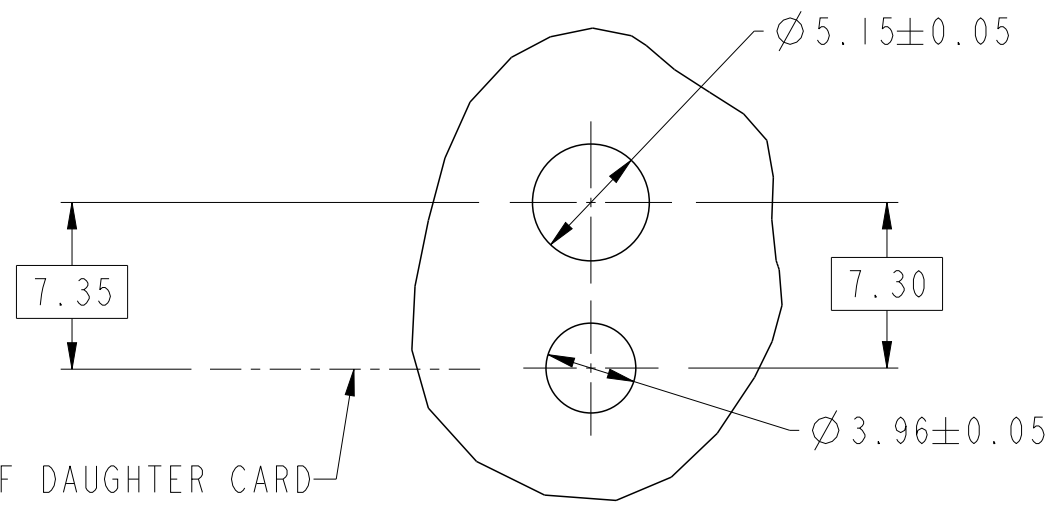
PDS: Rev :B

STATUS:Released

Printed: Apr 15, 2013



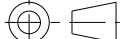

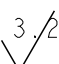

Copyright FCI.



TOP OF DAUGHTER CARD

SEE NOTE 3 & 4  
SCALE 3:1

1. MATERIAL: ZINC ALLOY.
2. FINISH: ZINC YELLOW CHROMATE.
3. APPLICATION SPECIFICATION: GS-20-045
4. REFER TO CUSTOMER DRAWING 10035911 FOR INFORMATION REGARDING PCB LAYOUT OF POWER AND GUIDE MODULES RELATIVE TO SIGNAL MODULES.
5. THIS PRODUCT MEETS EUROPEAN UNION DIRECTIVES AND OTHER COUNTRY REGULATIONS AS DESCRIBED IN GS-22-008
6. PACKAGING MEETS GS-14-920 LEAD FREE LABELING SPECIFICATION.
7. A SYMBOL WILL BE NEXT TO ANY DIMENSION, VIEW, OR NOTE WHICH HAS BEEN MODIFIED WITH THE CURRENT DRAWING REVISION.

spec ref				dr	Chen-Hong Tan	2006/05/02	<div>projection</div> <div></div>	<div>MM</div> <div></div>	size	A4	scale	3:10	
tolerance std ASME Y14.5 -	TOLERANCES UNLESS OTHERWISE SPECIFIED			eng	N Anandakumar	2013/04/08			ecn no				ELX-S-14283-1
				chr	-	-			rel level				Released
				appr	Chen-Hong Tan	2013/04/15			product family		AirMax VS		
surface <div> 3.200</div> ASME Y14.5	linear	0.X	±0.3		title	7.2mm GUIDE PIN 25.3mm LONG, W/ INTERNAL THREAD			dwg no	10066832		rev	B
		0.XX	±0.10										
		0.XXX	±0.050										
ASME Y14.5	angular	0°	±2°	www.fci.com	cat. no.	-			Product - Customer Drw			sheet 2 of 2	

PrintE File - REV C - 2009-06-09