

NIS036 SQUARE lenses for Nichia 036 Series



- Designed & optimized for Nichia Rigel (036) series of LEDs
- Special care taken to make a uniform white or warm white illumination.
- Compatibel with the Nichia JIGSAW board
- Lens material optical grade PC with high UV and temperature resistance (120°C/248°F). Allows use of high current and temperature conditions
- Holder material optical grade ABS (90°C/194°F)
- Best available optical efficiency, up to 90%, with an extremely good cutoff of light
- Integrated holder. Fastening to PCB (JIGSAW or custom-made) with appropriate glue. 4 pins for exact positioning of lenses. Pins fit with JIGSAW board layout.
- We advise customer to ensure the suitability and sufficiency of the bond in the end product. For example, mechanical stress, vibration and holes on the surface of the circuit boar weaken the strength of the tape.
- Please check fastening details from this link:
(http://www.ledil.com/datasheets/DataSheet_TAPE.pdf)
- Compact dimensions 21.6 x 21.6 mm. Square form enables easy build of matrix without any gaps between lenses.

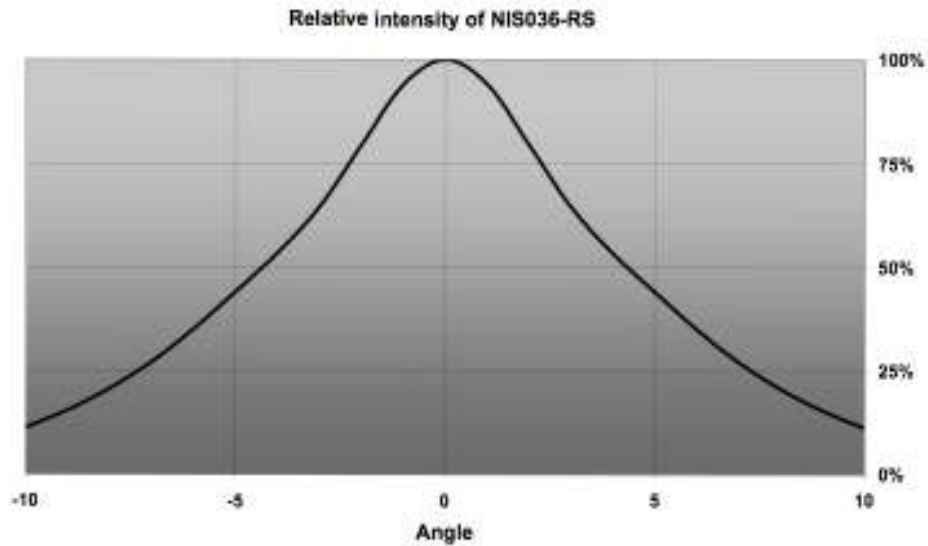
LENS TYPES

NAME	ORDERING CODE	PRELIMINATY DATA ON FWHM Angle
NIS036 REAL SPOT	FA10934_NIS036-RS	±4°
NIS036 SMOOTH SPOT	FA10935_NIS036-SS	±7°
NIS036 MEDIUM	FA10936_NIS036-D	±14°
NIS036 DIFFUSER	FA10937_NIS036-M	±8°
NIS036 OVAL	FA10938_NIS036-O	±5° x ±25°
NIS036 OVAL TURNED 90°	4FA11160_NIS036-O-90	±5° x ±25°
NIS036 Wide	FA10939_NIS036-W	±29°

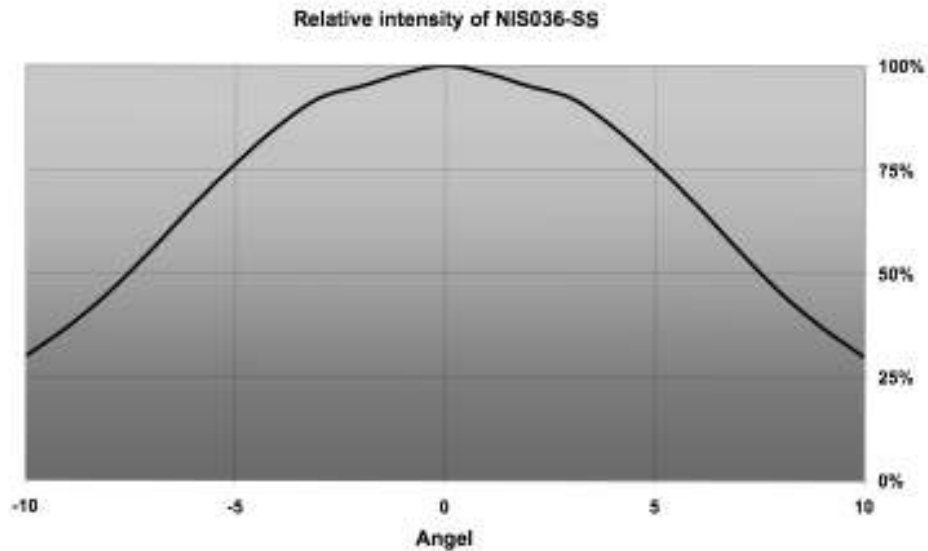
© Ledil Oy – PRELIMINARY - Subject to change without prior notice

MEASUREMENTS

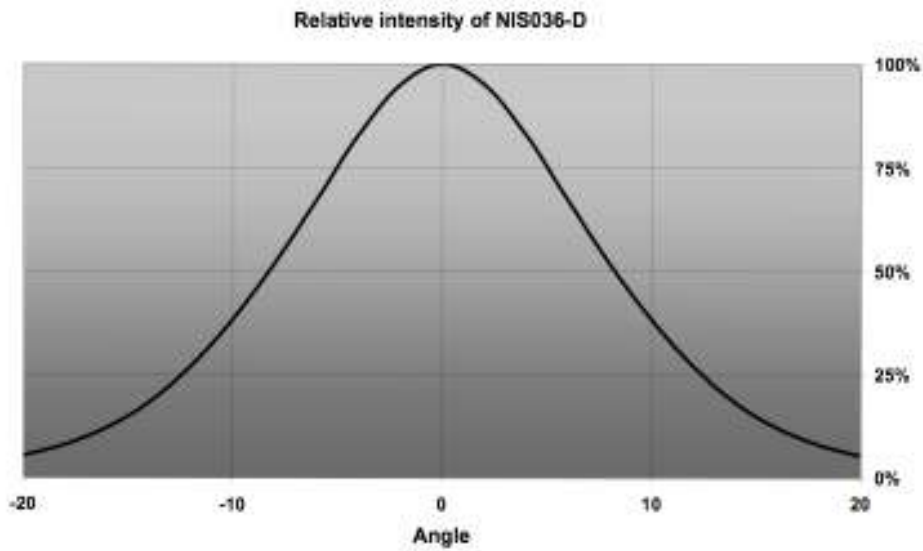
NIS036-RS



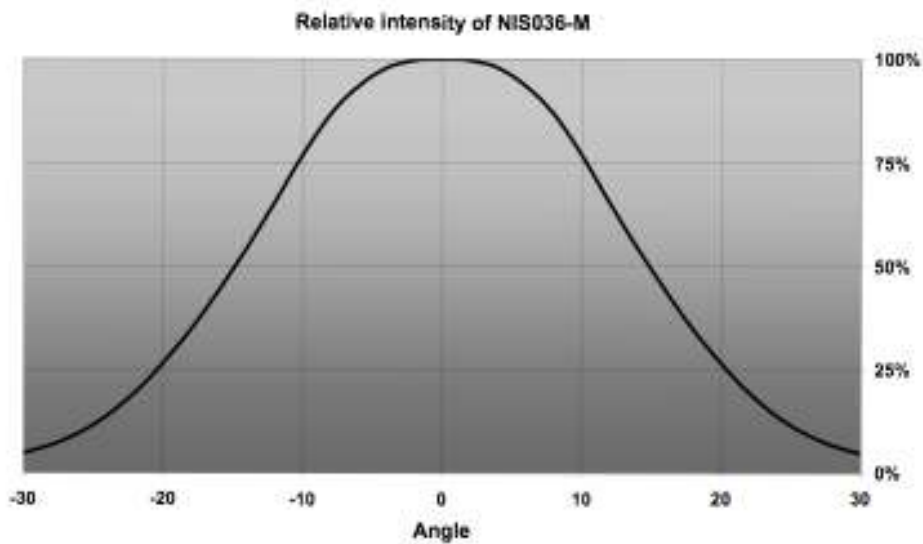
NIS036-SS



NIS036-D

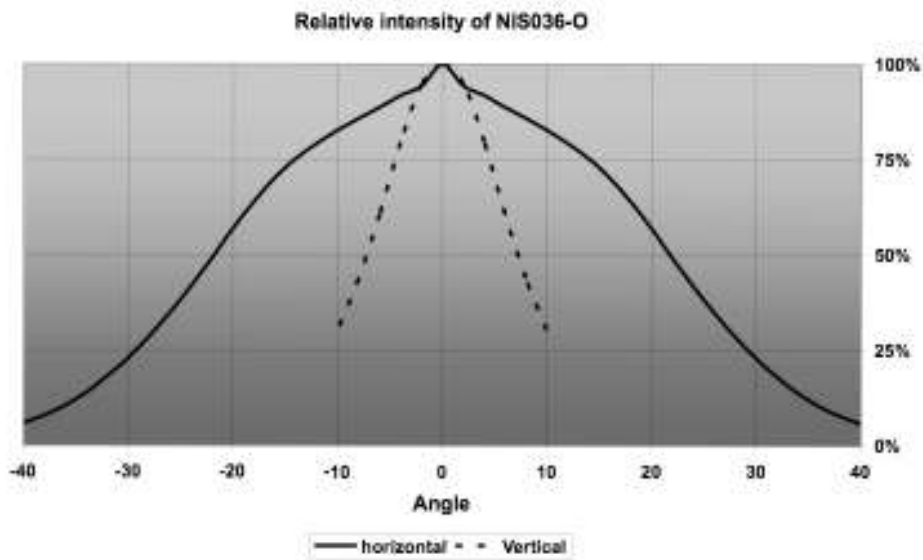


NIS036-M



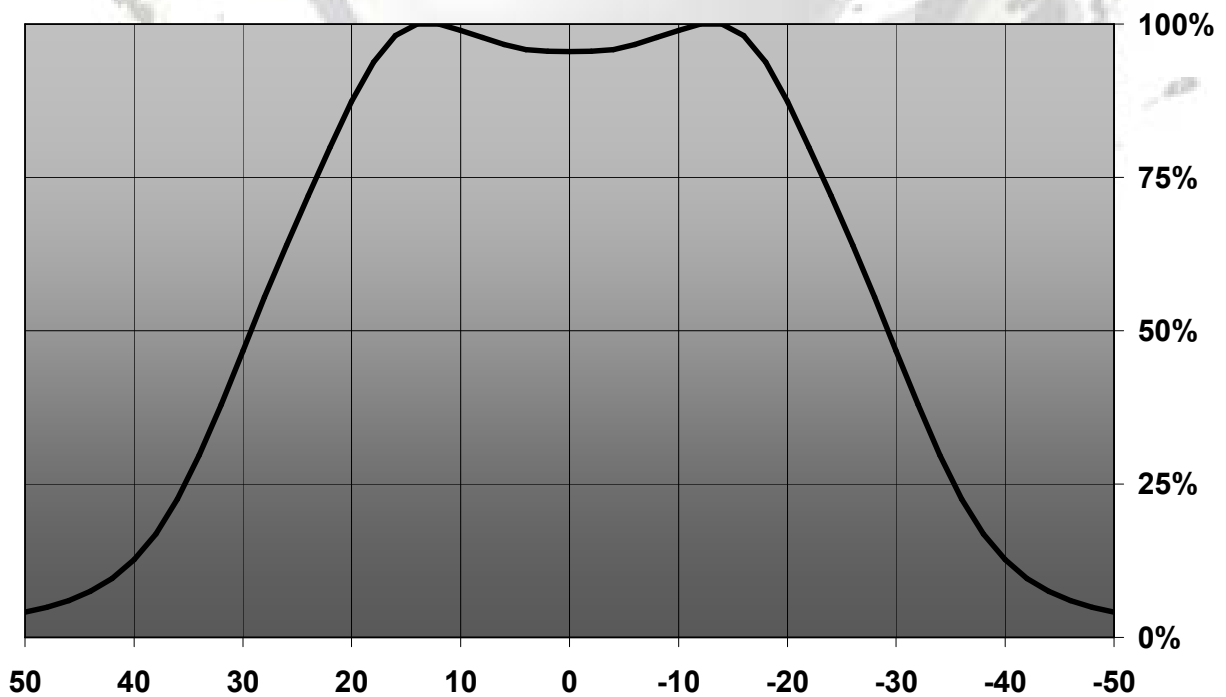
© Ledil Oy – PRELIMINARY - Subject to change without prior notice

NIS036-O

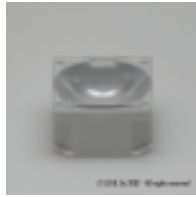
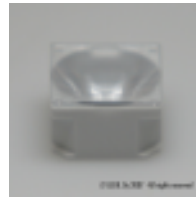



NIS036-W

Relative Intensity of NIS036-W-V6



© Ledil Oy – PRELIMINARY - Subject to change without prior notice

PHOTOS**NIS036-RS****NIS036-SS****NIS036-D****NIS036-M****NIS036-O****NIS036-W**

on request, e.g. different lens holder colors or packaging sizes.