

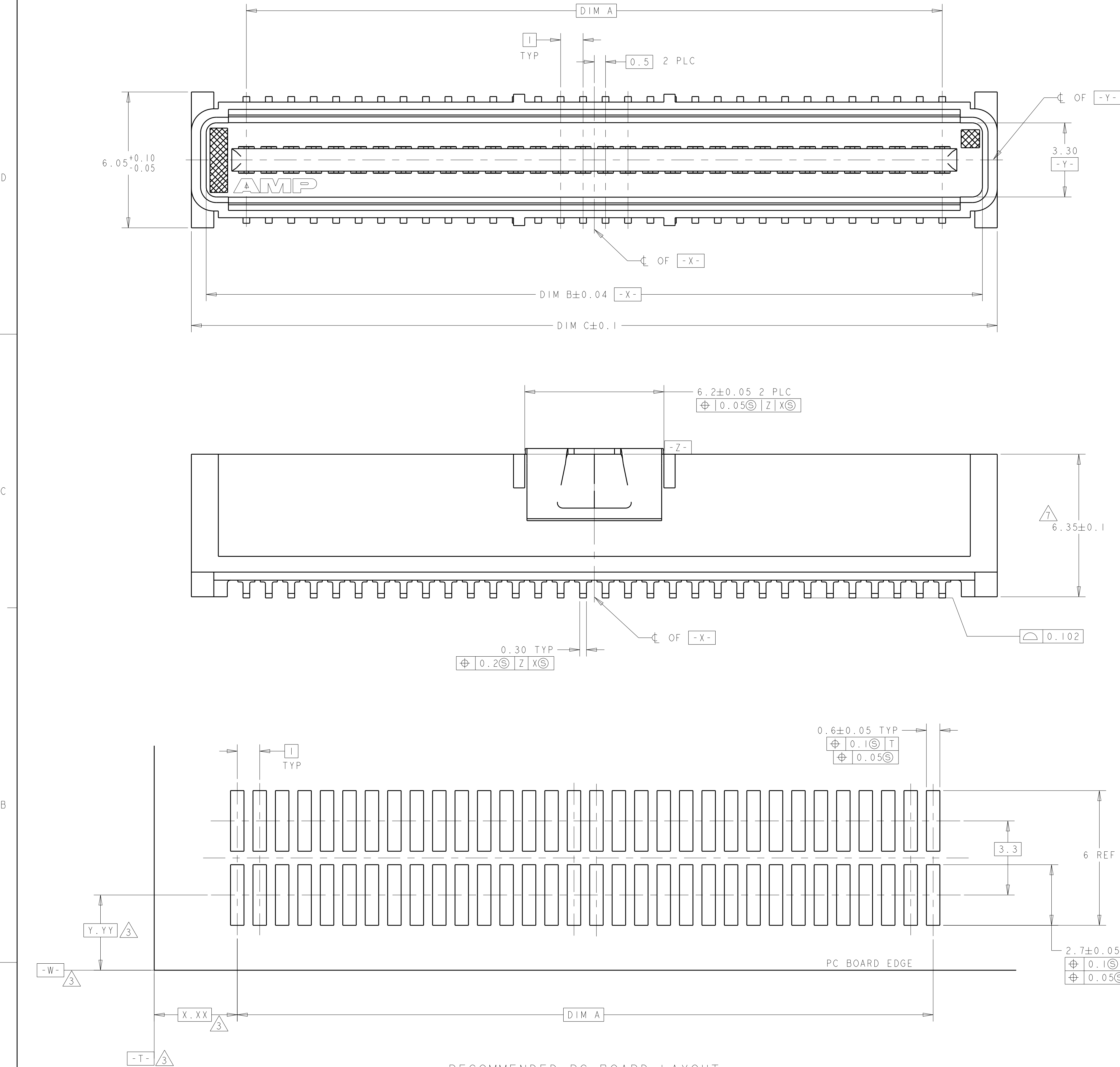
LOC	DIST	REVISIONS						
AD	00	P	LTR	DESCRIPTION	DATE	DWN	APVD	
			J	REVISED PER ECR-14-016951	11FEB2015	I.T	W.H	

D

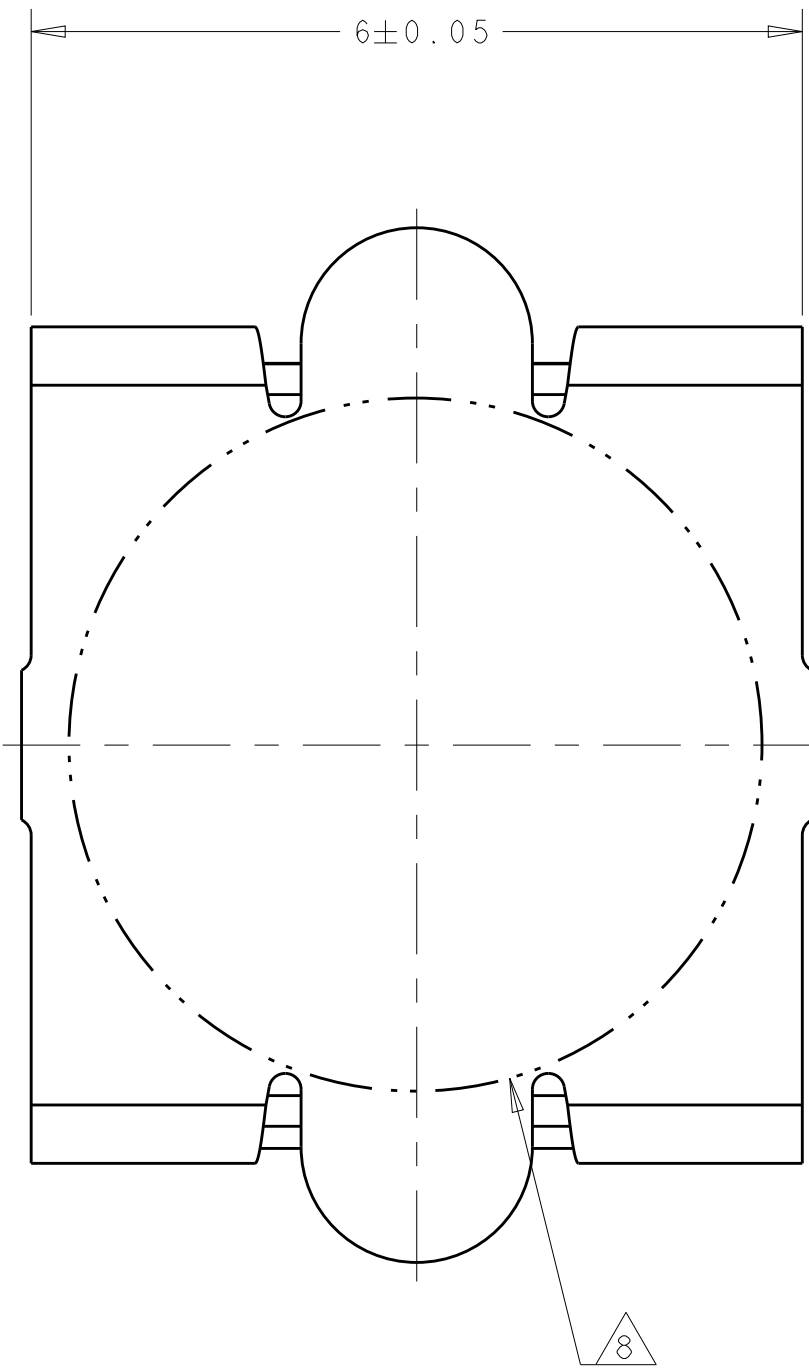
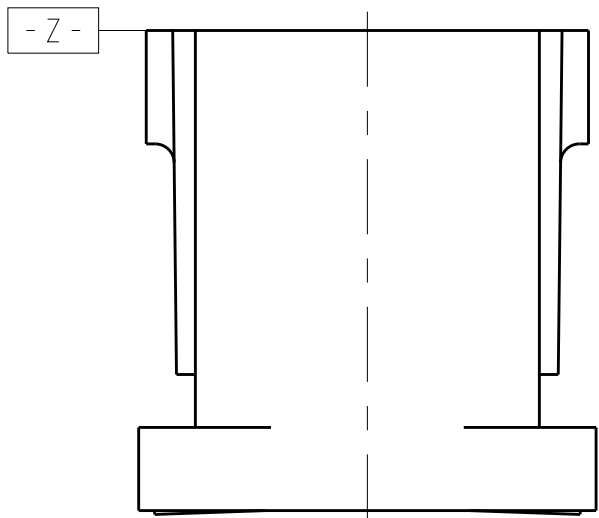
C

B

A


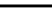


- 1. HOUSING MATERIAL: LIQUID CRYSTAL POLYMER COLOR: BLACK. CONTACT MATERIAL: PHOSPHOR BRONZE.
- 2. CONTACT FINISH: NICKEL UNDERPLATE ALL OVER, MATING SURFACES PLATED TO MEET PL1 PERFORMANCE REQUIREMENTS OF INDUSTRY SPECIFICATION EIA-700AAAB, SOLDER TAILS PLATED TIN-LEAD.
- 3. DATUM LOCATIONS AND BASIC DIMENSIONS TO BE ESTABLISHED BY THE CUSTOMER. CONSULT AMP ENGINEERING WHEN PLACING MULTIPLE CONNECTORS ON A PC BOARD.
- 4. PACKAGED IN TAPE ON REEL PER EIA-481.
- 5. VACUUM COVER DESIGNED FOR 4mm DIA. NOZZLE. VACUUM COVER TO BE REMOVED AFTER SOLDERING. VACUUM COVER REMOVED FROM SOME VIEWS FOR DIMENSIONAL CLARITY.
- 6. SHORTER SOLDER LANDS MAY BE USED PER EIA 700AAAB, HOWEVER 2.7 LENGTH ASSURES OPTIMUM SOLDER FILLET REGARDLESS OF MANUFACTURER OF CONNECTOR.
- 7. REFERRED TO AS DIM N IN EIA 700AAAB SPECIFICATION.
- 8. 5.5 MIN DIAMETER TARGET AREA FOR VACUUM PICK-UP. CONTACT FINISH: 0.002 MINIMUM BRIGHT TIN-LEAD (93-7) ON SOLDER AREA, 0.00127 MINIMUM GOLD ON MATING AREA, BOTH OVER 0.00127 MINIMUM NICKEL ON ENTIRE CONTACT.
- 9. OBSOLETE PART NUMBER.



VACUUM COVER

8	45.9	44.58	41	120528-2	8	84	1-120532-2
8	35.9	34.58	31	120528-1	8	64	1-120532-1
2	45.9	44.58	41	120528-2	8	84	120532-2
2	35.9	34.58	31	120528-1	8	64	120532-1
FINISH	DIM C	DIM B	DIM A	MATING CONNECTOR	STACK HGTS	POS	PART NO

THIS DRAWING IS A CONTROLLED DOCUMENT.		DWN	J. REED	2/17/97	 TE Connectivity		
DIMENSIONS:		CHK	L.V.O	2/17/97			
mm		APVD	-	-	NAME PLUG ASSEMBLY, W/ COVER, 1.0mm FH(IEEE1386) CONNECTOR		
TOLERANCES UNLESS OTHERWISE SPECIFIED:		PRODUCT SPEC					
0 PLC ±		502-1079					
1 PLC ±		APPLICATION SPEC					
2 PLC ±0.03		114-25045					
3 PLC ±0.003		RESTRICTED TO					
4 PLC ±							
ANGLES ±0°30'		SIZE CAGE CODE DRAWING NO					
FINISH		A100779C=120532					
MATERIAL 		WEIGHT -			SHEET 17 OF 1 REV J		
SEE TABLE		CUSTOMER DRAWING					