



GBPC 40, 50 SERIES

High Current 40, 50 AMPS.

Single Phase Glass Passivated Bridge Rectifiers



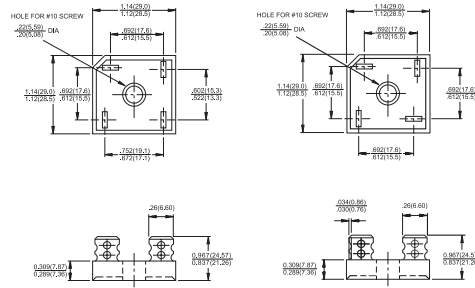
Voltage Range
50 to 1000 Volts
Current
40, 50.0 Amperes

Features

- ✧ Glass passivated junction
- ✧ The plastic material used carries Underwriters Laboratory Flammability Recognition 94V-0
- ✧ Integrally molded heatsink provide very low thermal resistance for maximum heat dissipation
- ✧ Universal 4-way terminals; snap-on, wrap-around, solder or P.C. board mounting
- ✧ Surge overload ratings 400 amperes
- ✧ Typical I_R less than 0.2 μ A
- ✧ High temperature soldering guaranteed: 260°C / 10 seconds / .375", (9.5mm) lead lengths
- ✧ Isolated voltage from case to lead over 2500 volts

GBPC40

GBPC40-M



Dimensions in inches and (millimeters)

Maximum Ratings and Electrical Characteristics

Rating at 25°C ambient temperature unless otherwise specified.

Single phase, half wave, 60 Hz, resistive or inductive load.

For capacitive load, derate current by 20%

Type Number	Symbol	-005	-01	-02	-04	-06	-08	-10	Units
Maximum Recurrent Peak Reverse Voltage	V_{RRM}	50	100	200	400	600	800	1000	V
Maximum RMS Voltage	V_{RMS}	35	70	140	280	420	560	700	V
Maximum DC Blocking Voltage	V_{DC}	50	100	200	400	600	800	1000	V
Maximum Average Forward Rectified Current @ $T_C = 55^\circ C$ GBPC40 GBPC50	$I_{(AV)}$				40.0 50.0				A
Peak Forward Surge Current, Single Sine-wave Superimposed on Rated Load (JEDEC method) GBPC40 GBPC50	I_{FSM}				400 400				A
Maximum Instantaneous Forward Voltage Drop Per Element at Specified Current GBPC40 @20A GBPC50 @25A	V_F				1.1				V
Maximum DC Reverse Current at Rated DC Blocking Voltage Per Element	I_R				10				μ A
Typical Thermal Resistance (Note 1)	$R_{\theta JC}$				1.5				$^{\circ}C/W$
Operating and Storage Temperature Range	T_J, T_{STG}				-50 to +150				$^{\circ}C$

Notes: 1. Thermal Resistance from Junction to Case.

2. Suffix "M" - Terminal Location Face to Face.



GBPC 40, 50 SERIES

High Current 40, 50 AMPS.

Single Phase Glass Passivated Bridge Rectifiers

RATINGS AND CHARACTERISTIC CURVES (GBPC40005 THRU GBPC4010)
GBPC50005 THRU GBPC5010

FIG.1- MAXIMUM FORWARD CURRENT DERATING CURVE

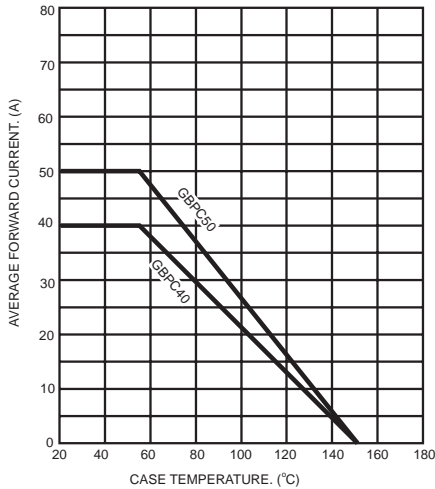


FIG.2- MAXIMUM NON-REPETITIVE FORWARD SURGE CURRENT

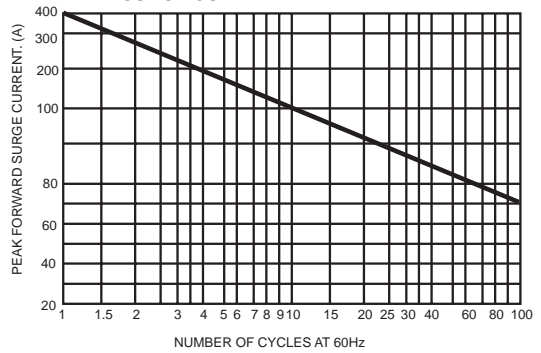


FIG.3- TYPICAL REVERSE CHARACTERISTICS PER BRIDGE ELEMENT

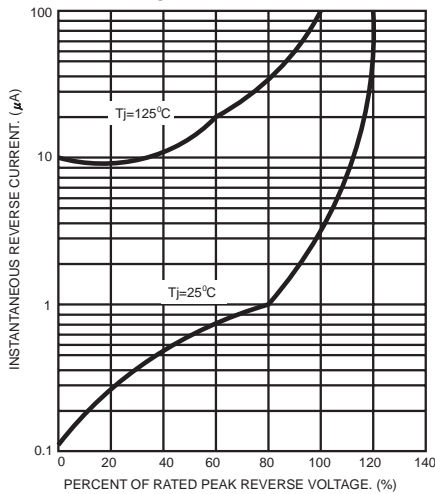


FIG.4- TYPICAL FORWARD CHARACTERISTICS PER BRIDGE ELEMENT

