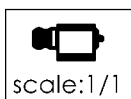
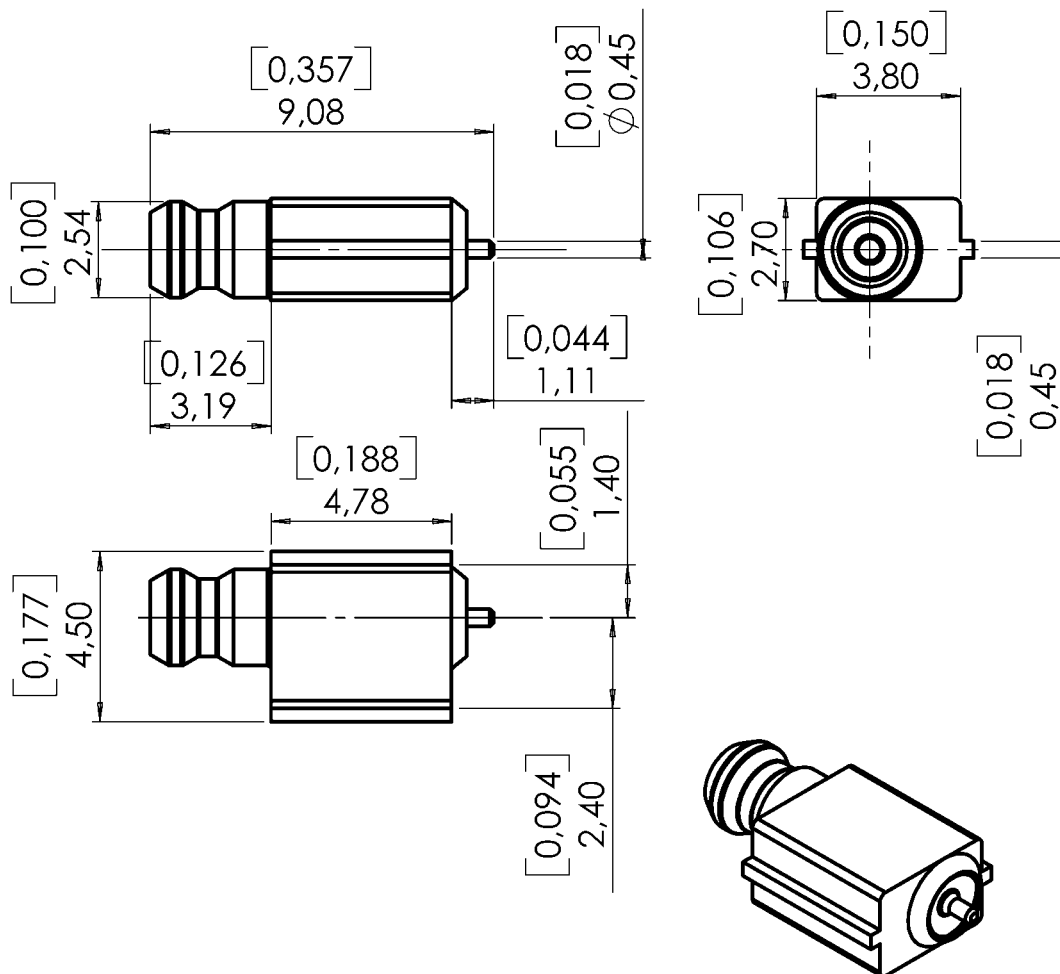


**R199.006.413**

Series : **MOEBIUS**

All dimensions are in mm/[inch]



| COMPONENTS     | MATERIALS | PLATING (μm) |
|----------------|-----------|--------------|
| BODY           | BRASS     | NPGR         |
| CENTER CONTACT | BRASS     | NPGR         |
| OUTER CONTACT  | BRASS     | NPGR         |
| INSULATOR      | -PEEK     |              |
| GASKET         | -         |              |
| OTHERS PARTS   | -         | -            |
| -              |           | -            |
| -              |           | -            |
|                | -         |              |

In the effort to improve our products, we reserve the right to make changes judged to be necessary.



**EDGE CARD RECEPTACLE****REEL OF 100****R199.006.413**Series : **MOEBIUS****PACKAGING**

| Standard   | Unit              | Other             |
|------------|-------------------|-------------------|
| <b>100</b> | <b>'W' option</b> | <b>Contact us</b> |

**SPECIFICATION****ELECTRICAL CHARACTERISTICS**

|                                 |                             |                          |
|---------------------------------|-----------------------------|--------------------------|
| Impedance                       | <b>50</b>                   | $\Omega$                 |
| Frequency                       | <b>0-6</b>                  | GHz                      |
| VSWR                            | <b>1.05</b> + <b>0,0500</b> | x F(GHz) Maxi            |
| Insertion loss                  | <b>0.2</b>                  | $\sqrt{F}$ (GHz) dB Maxi |
| Voltage rating                  | <b>100</b>                  | Veff Maxi                |
| Dielectric withstanding voltage | <b>250</b>                  | Veff mini                |
| Insulation resistance           | <b>3000</b>                 | M $\Omega$ mini          |

**ENVIRONMENTAL**

|                       |                 |                    |
|-----------------------|-----------------|--------------------|
| Operating temperature | <b>-40/+110</b> | $^{\circ}\text{C}$ |
| Hermetic seal         |                 | Atm.cm3/s          |
| Panel leakage         |                 |                    |

**OTHER CHARACTERISTICS**

Assembly instruction

Others :

**MECHANICAL CHARACTERISTICS**

|             |               |             |
|-------------|---------------|-------------|
| Mating life | <b>25000</b>  | Cycles mini |
| Weight      | <b>0,3800</b> | g           |

**Issue : 0710 A**

In the effort to improve our products, we reserve the right to make changes judged to be necessary.

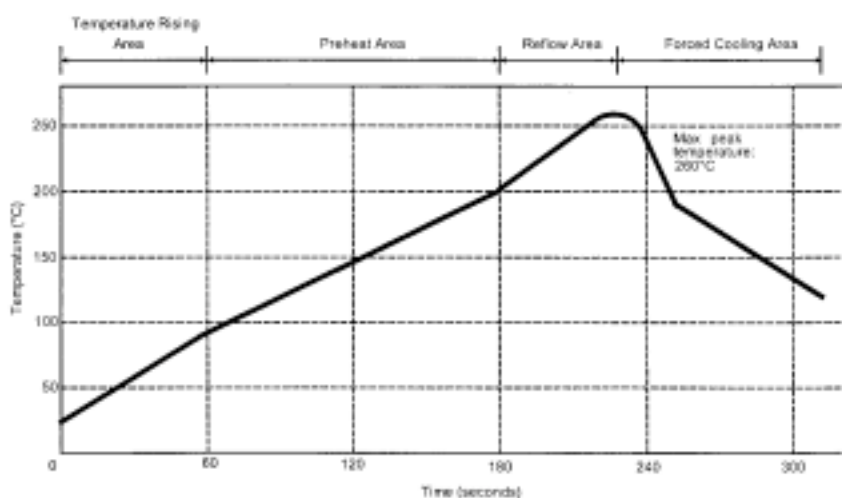


**EDGE CARD RECEPTACLE****REEL OF 100****R199.006.413**Series : **MOEBIUS****SOLDER PROCEDURE**

1. Deposition of solder paste 'Sn Ag4 Cu0.5' on mounting zone by screen printing application. We recommend a low residue flux.  
We advise a thickness of 150 microns mini ( 0.006 inch mini ). Verify that the edges of the zone are clean.
2. Placement of the receptacle on the mounting zone with an automatic machine of 'pick and place' type.  
Video camera is recommended for the positioning of the component. Adhesive agents must not be used on the receptacle.
3. Soldering by infra-red reflow.  
Below, please find the typical profile to use.
4. Cleaning of printed circuit boards.
5. Checking of solder joints and position of the component by visual inspection.

**TEMPERATURE PROFILE**

## INFORMATION ABOUT PAD



| Parameter                        | Value     | Unit   |
|----------------------------------|-----------|--------|
| Temperature rising Area          | 1 - 4     | °C/sec |
| Max Peak Temperature             | 260       | °C     |
| Max dwell time @260°C            | 10        | sec    |
| Min dwell time @235°C            | 20        | sec    |
| Max dwell time @235°C            | 60        | sec    |
| Temperature drop in cooling Area | -1 to - 4 | °C/sec |
| Max dwell time above 100°C       | 420       | sec    |

Issue : 0710 A

In the effort to improve our products, we reserve the right to make changes judged to be necessary.



**R199.006.413**

Series : **MOEBIUS**

Technical drawing of a PCB layout showing dimensions and material specifications:

- Overall Dimensions:**
  - Width:  $[0,256]$  6,50
  - Height:  $[0,156]$  3,95
- Top Section:**
  - Holes:  $[0,024]$   $\varnothing 0,60$  plated Holes
  - Distance from top edge to first hole:  $[0,059]$  1,50
- Central Section:**
  - Width:  $[0,228]$  5,80
  - Material: the ground is on the bottom of PCB
  - Thickness of PCB: 0.508 mm
  - material: RO4350 ( $\epsilon_r=3.48$ )
  - copper layer = 0.017mm
- Right Section:**
  - MAIN Strip:  $[0,085]$  2,15
  - Distance from main strip to right edge:  $[0,041]$  1,05
  - Radius:  $[0,012]$  R0,30
- Bottom Section:**
  - Holes:  $[0,098]$

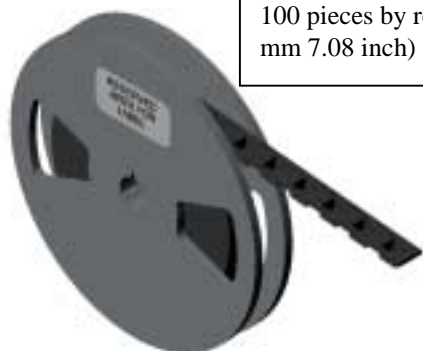
In the effort to improve our products, we reserve the right to make changes judged to be necessary.



**EDGE CARD RECEPTACLE****REEL OF 100****R199.006.413**

Series : MOEBIUS

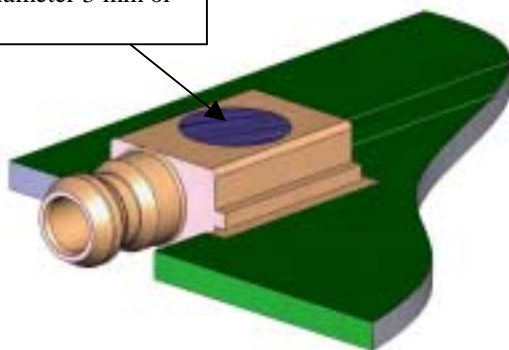
PACKAGING by reel



100 pieces by reel full package on reel (dia 180 mm 7.08 inch) , weight of on reel =0.1 Kg



Suction area diameter 3 mm or 0.118 inch

**Issue : 0710 A**

In the effort to improve our products, we reserve the right to make changes judged to be necessary.

