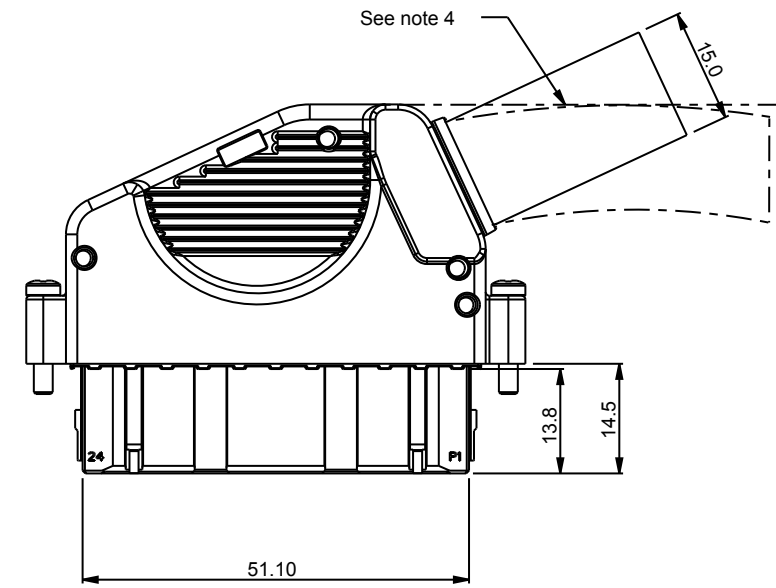
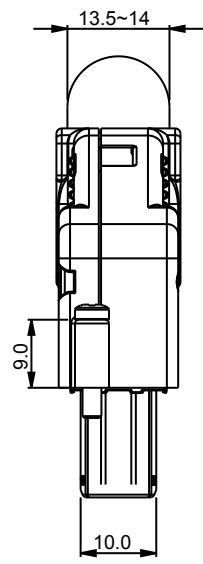
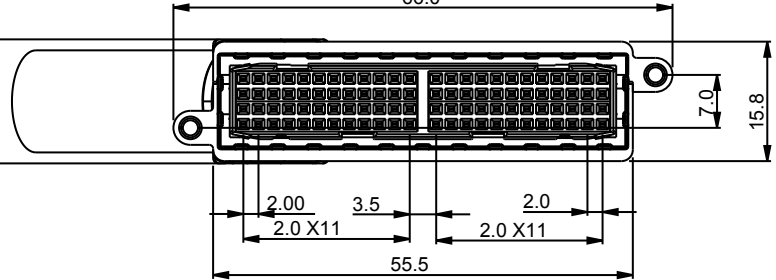
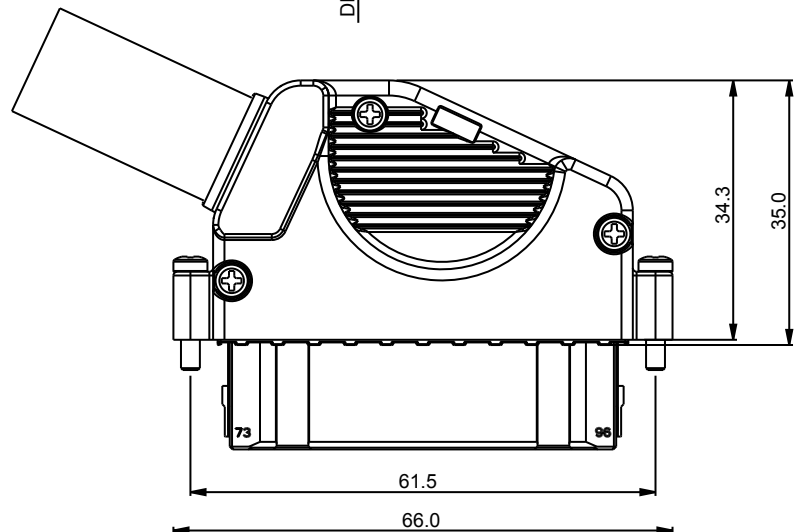
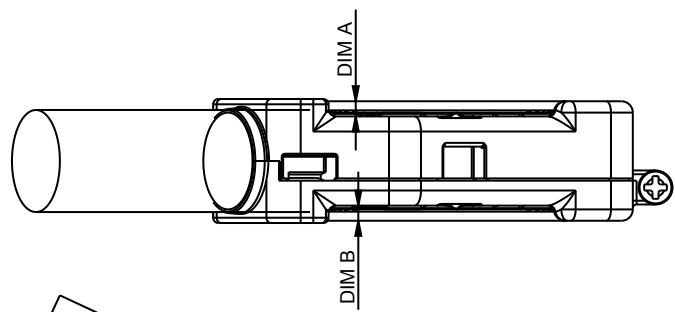




Copyright FCI.



Cable KITS P/N	10087038-101LF	10087038-102LF	10087038-103LF	10087038-104LF
AWG Size	26	28 & 30	26	28 & 30
DIM A	2.00	2.00	0.30	0.30
DIM B	2.00	2.00	0.30	0.30

spec ref				*				dr	Junon Huang	2009/06/02	<div>projection</div> <div></div>	<div>MM</div> <div></div>	size	A4	scale	1.000
tolerance std	TOLERANCES UNLESS OTHERWISE SPECIFIED			eng	De-Feng Qin	2011/08/28	ecn no	ELX-DG-005300-2								
				chr	Abin Yu	2011/08/30										
				appr	Pei-Ming Zheng	2011/08/30				product family			-	rel level	Released	
<div>surface</div> <div></div>	linear	0.X	±0.3		title	96 Pos Cable Connector Kits	dwg no	10087038	rev		C					
		0.XX	±0.15													
		0.XXX	±0.05													
	angular	0°	±3 °	www.fci.com	cat. no.	-	Product - Customer Drw			sheet 1	of 2					

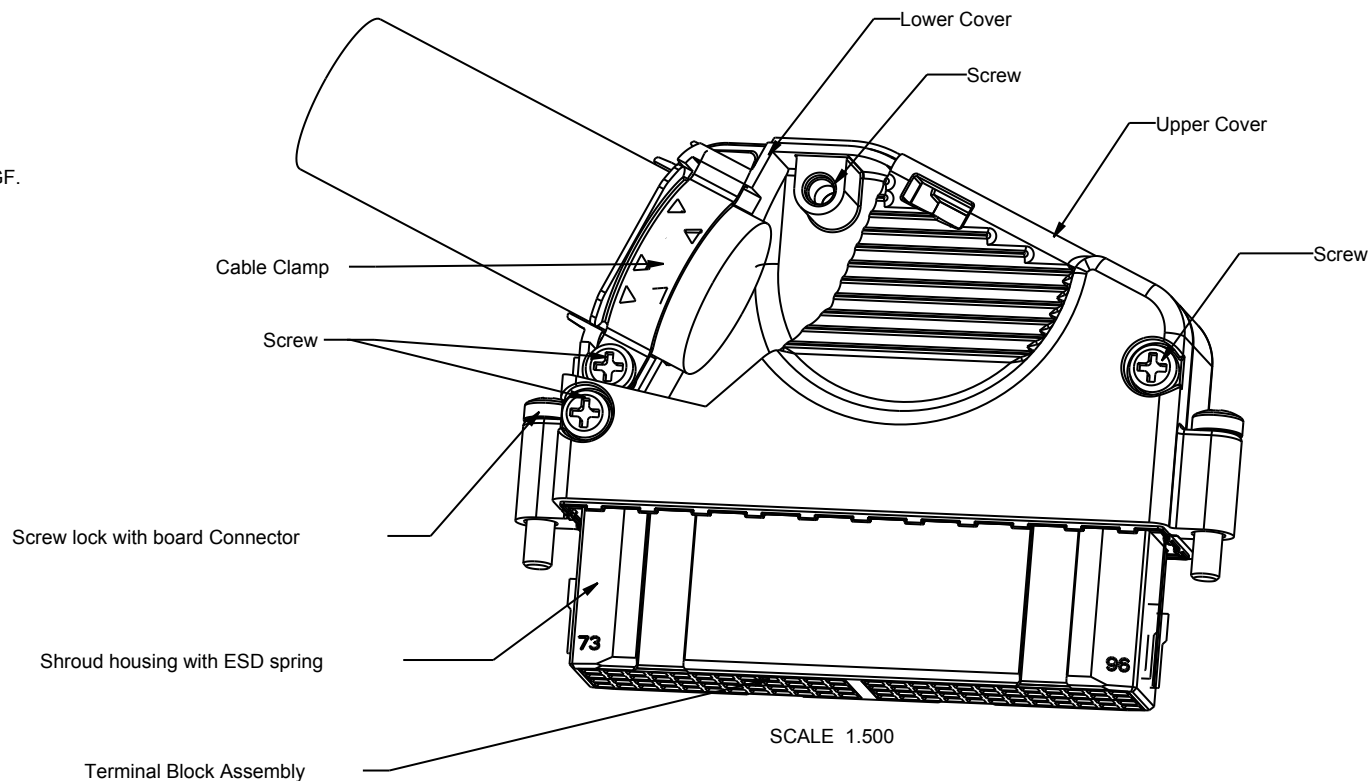
ProE File - REV C - 2009-06-09

BOM of cable kits 10087038

Components Name	Upper Cover	Lower cover	Shroud housing with ESD spring	Terminal Block Assembly	Cable Clamp	Screw lock with Board connector	Screw lock to cover & clamp
Q'TY/ Kits	1	1	1	4	1	2	4

Notes:

1. This product meets europe uniondirectives and other country regulations as described in GS-22-008.
2. The product is not intended to be exposed to a manufacturing solder process.
3. Material:
Die casting cover: Zn alloy with Cu; Nickel & pure tin plating
Shroud housing: Black PBT 30% GF.
Terminal block housing:Black PBT 30% GF.
Terminal: Copper alloy and performance according to Telcordia CO.
ESD spring: Steel stainless.
Screw: Steel stainless
4. The cable must be flexible to be bent under the line as below draft shown after cable assembled.
5. Product specification GS-12-562
Application specification: GS-20-114
Packaging specification: GS-14-1292



spec ref		*		dr	Junon Huang	2009/06/02	projection 	MM	size	A4	scale	1.000	
tolerance std	TOLERANCES UNLESS OTHERWISE SPECIFIED			eng	De-Feng Qin	2011/08/28			ecn no	ELX-DG-005300-2			
				chr	Abin Yu	2011/08/30							
				appr	Pei-Ming Zheng	2011/08/30	product family	-					rel level
surface 	linear	0.X	±0.3		title	96 Pos Cable Connector Kits			dwg no	10087038		rev	C
		0.XX	±0.15										
		0.XXX	±0.05										
	angular	0°	±3 °	www.fci.com	cat. no.	-	Product - Customer Drw			sheet 2	of 2		

Plot File - REV C - 2009-06-09