

# Keysight Technologies

## N6700 Modular Power System Family

N6705B, N6715B DC Power Analyzer Mainframes

N6731B – N6786A DC Power Modules

14585A Control and Analysis Software

Data Sheet



Unlocking Measurement Insights

## R&D Engineers are Under Time Pressure

- Ideal for R&D testing and design validation
- Sources and measures DC voltage and current into your device under test
- Combines one to four DC power supplies, DMM, oscilloscope, arbitrary waveform generator, and data logger in one integrated instrument
- Saves time – no programming required
- Eliminates the need to gather and configure multiple instruments
- Flexible, modular system: Lets you mix and match DC source power levels and measurement performance levels to optimize your investment
- Connect via GPIB, LAN, or USB
- Fully compliant to LXI Class C specification

Due to increasing time-to-market pressures, research and development engineers often find themselves on tight schedules to work through device under test (DUT) testing. Along with being driven faster, the R&D engineers can face a high regret factor should their haste result in damaging scarce, complex or expensive DUTs during product development. This is a particular concern when tests involve applying DC power to a DUT. Furthermore, test complexity increases when testing devices that require multiple input voltages, such as printed circuit boards.

Today, when performing DC power-related tests, R&D engineers must gather and configure multiple instruments to complete DC sourcing and measurement tasks. When executing these complex tasks, which can involve simultaneously connecting to and physically interacting with multiple test instruments, the risk of error increases. In response, R&D engineers may choose to automate tests that are too complex to do manually. Unfortunately, while automating tasks reduces human error, writing and debugging programs adds more work to already overloaded R&D engineers.

The Keysight Technologies, Inc. N6705 DC Power Analyzer represents an entirely new instrument category for R&D engineers. It provides unrivaled productivity gains when sourcing and measuring DC voltage and current into a DUT. Using the Keysight N6705 DC Power Analyzer, R&D engineers can gain insights into the DUT's power consumption in minutes without writing a single line of code. It provides an easy-to-use interface, with all sourcing and measuring functions available from the front panel.

## New Instrument Category for R&D Engineers to Increase Productivity

### The Keysight N6705 DC power analyzer saves time

- Provides unrivaled productivity gains for sourcing and measuring DC voltage and current into your DUT by integrating up to four advanced power supplies with DMM, scope, arbitrary waveform, and data logger features.
- Eliminates the need to gather multiple pieces of equipment, create complex test setups including transducers (such as current probes and shunts) to measure current into your DUT.
- Eliminates the need to develop and debug programs to control a collection of instruments and take useful measurements because all the functions and measurements are available at the front panel.

### The Keysight N6705 DC power analyzer makes these tasks easy, right from the front panel

- Setup and view critical turn-on/turn-off sequences.
- Measure and display voltage, current versus time to visualize power into the DUT.
- Control DC bias supply ramp-up/down rates.
- Generate DC bias supply transients and disturbances (arbs).
- Log data for seconds, minutes, hours, or even days to see current/power consumption or capture anomalies.
- Save data and screen shots to internal storage or external USB memory devices.
- Save and name your setup and tests for easy re-use.
- Share setups with colleagues.

### The Keysight 14585A control and analysis software saves even more time

The 14585A control and analysis software is a companion PC application that lets you control any of the N6700 family's DC power modules when installed in up to four N6705 mainframes – from a single PC control screen. With this software, you get improved data visualization and data management.

- Compliments the N6705 DC power analyzer's front panel controls.
- Control and analyze data from up to four N6705 DC power analyzer mainframes and any installed modules at once – up to 16 power modules simultaneously.
- Easily create complex waveforms to simulate or load down a DUT by inputting a formula, choosing from built-in, or importing waveform data.
- Enhanced control and analysis of data with familiar PC controls and large display.
- Data log measurements directly to a PC.
- Perform statistical analysis of power consumptions.

For more information, visit [www.keysight.com/find/14585](http://www.keysight.com/find/14585).

## Modular System Based on DC Power Supply Outputs

The Keysight N6705 DC power analyzer is a modular system that can be tailored to meet specific test needs. At the heart of the DC power analyzer is the DC power module. The Keysight N6705 DC power analyzer is a mainframe that has four slots to accept one to four DC power modules. Each DC power module takes one slot, except for the N6750 high-performance autoranging and N6760 precision power modules that are  $\geq 300$  W, which occupy two slots. This modular design gives you the flexibility to mix and match over thirty different DC power modules to create a solution optimized to meet specific test requirements.

R&D engineers can invest in high-performance outputs where speed and accuracy are needed, or purchase basic performance outputs for simple DC power requirements. In the future, as your test needs change, you can purchase different modules and swap them into the DC power analyzer, thus creating a solution that protects your investment and grows with you.

Each DC power module output is fully isolated and floating from ground and from each other.



Figure 1. The Keysight N6705 DC power analyzer with 14585A software.

| Feature  | Benefit  |
|--|--|
| Integrates capabilities of power supply DMM, scope, arb, and data logger | Saves time by eliminating the need to find and interconnect multiple instruments.<br>Provides synergistic functions not available from separately connected instruments. |
| Large color graphics display   | Fast, simple, quick, set-up and monitoring.<br>Ability to visualize results of multiple channels.  |
| Connections and controls color-coded to the display                      | Fast set-up and control.<br>Confidence that you are configured and testing correctly.  |
| Intuitive, dedicated physical controls for common functions              | Fast set-up and control using a familiar interface, with each instrument function behaving like its standalone counterpart.  |
| Access all capabilities without programming                              | Reduce 90% of the effort associated with set-up by eliminating the need for a PC, drivers, and software.   |
| The N6730, N6740, and N6770 Series of basic DC power modules             | 50 W, 100 W, and 300 W;<br>up to 150 V, up to 20 A   |
| The N6750 Series of high-performance, autoranging DC power modules       | 50 W, 100 W, 300 W and 500 W;<br>up to 60 V, up to 50 A  |
| The N6760 Series of precision DC power modules                           | 50 W, 100 W, 300 W and 500 W;<br>up to 60 V, up to 50 A  |
| The N6780 Series of application-specific power modules                   | Up to 80 W;<br>up to 20 V, up to $\pm 8$ A   |



Figure 2. DC power modules are easily installed into the N6705 DC power analyzer mainframe.

## Voltmeter/Ammeter: Meter View

Each DC power module in the Keysight N6705 DC power analyzer has a fully integrated voltmeter and ammeter to measure the actual voltage and current being sourced out of the DC output into the DUT. Because this voltmeter/ammeter function is built in, it is easy to make measurements without additional wires or the added complexity of current sense resistors or current shunts. The accuracy of the voltage and current measurements are based on the type of module that is installed (basic, high-performance, precision, or SMU). You can find the accuracy specification in the tables starting on page 17 under “Voltage Measurement Accuracy” and “Current Measurement Accuracy.”\*

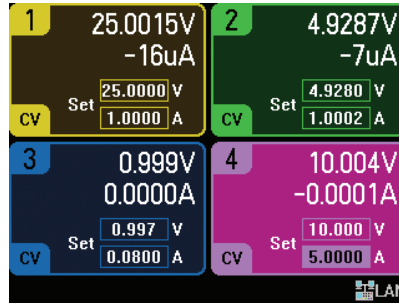


Figure 3. In Meter View, all 4 outputs can be viewed simultaneously. The both measured values for voltage and current are displayed for each output.

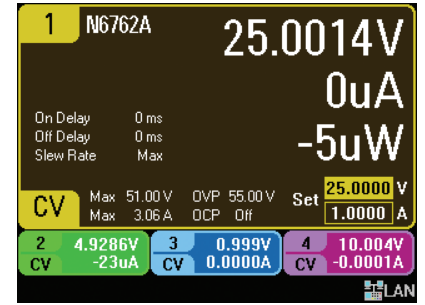


Figure 4. In Meter View, you can also view an enlarged view of one channel, displaying many settings and measured values, for that channel. A summary is shown for the other three channels.

\* Complete specifications are available at <http://literature.cdn.keysight.com/litweb/pdf/N6700-90001.pdf>

## Oscilloscope: Scope View

Each DC power module in the Keysight N6705 DC power analyzer has a fully integrated digitizer to capture the actual voltage-versus-time and current-versus-time being sourced from the DC output into the DUT. The digitized data appears on the large color display just like an oscilloscope. Because this oscilloscope function is built in, it is possible to make current measurements without current sense resistors, current shunts, or current probes. This greatly reduces measurement setup complexity and provides for accurate and fully specified, calibrated measurements. The accuracy of the measurements in oscilloscope mode is based on the type of power module installed (basic, high-performance autoranging, precision, and SMU). You can find this information in the Keysight N6700 Modular Power System Family Specifications Guide under “Oscilloscope Measurement Accuracy.”\*

The N6760 and N6780 SMU series of power modules offer simultaneous digitizing of output voltage and output current, such that you can view a voltage trace and a current trace at the same time on the oscilloscope display. For all other module types, you can select to view either a voltage trace or a current trace on the oscilloscope display.



Figure 5. In scope view, voltage and current traces are displayed. In this picture, the DC current flowing into the DUT is clearly visible as a time-varying waveform.

The table below shows the relationship between the number of scope traces, the sample rate, and the buffer size available for each trace. As shown, the digitizer can run at up to 200 kHz with up to 256 k samples per trace (512 k samples with SCPI commands). With an effective measurement bandwidth of up to 30 kHz, this oscilloscope function is perfectly matched to capture time varying events on the DC output, such as peak current demand, dropouts, rise times and other DC transients and disturbances.

The measurement buffer size can be set to between 1 k and 256 k points. Whatever buffer size is selected, its available points must be divided by the total number of traces being measured.

Note that the measurement window is determined by multiplying the selected buffer size by the sample rate. For a measurement window of 60 seconds for example, with a buffer size set to 256 k points, the fastest sample rate available to you will be 234 microseconds. If the buffer size is set to 64 k points, the fastest available sample rate will be 937 microseconds.

The oscilloscope can be triggered on either voltage or current levels. Because the Keysight N6705 DC power analyzer is an integrated instrument, the oscilloscope can also be easily configured to trigger on the start of an arbitrary waveform or to trigger when the DC power output is enabled. For example, to make an inrush current measurement on your DUT, you can set the oscilloscope to trigger on the DC output’s on/off key, set the trigger mode to single shot, and then turn on the DC output. This will immediately capture the current flowing out of the DC module into the DUT and give a picture of the inrush current of the DUT. This integrated functionality is not available when using a collection of separate test instruments on the test bench and is an example of how the DC power analyzer reduces setup time and complexity.

| Power module type | Number of traces<br>(1 trace = V or I) | Fastest sample rate          | Maximum buffer size available per trace |
|-------------------|--|------------------------------|---|
| One N6780 SMU     | 1 trace                                | 5.12 $\mu$ s<br>(~ 200 kHz)  | 256 k points                            |
| Any power module  | 1 or 2 traces                          | 10.24 $\mu$ s<br>(~ 100 kHz) | 128 k points                            |
| Any power module  | 3 or 4 traces                          | 20.48 $\mu$ s<br>(~ 50 kHz)  | 64 k points                             |

\* Complete specifications are available at <http://literature.cdn.keysight.com/litweb/pdf/N6700-90001.pdf>

## Data Logger View

The Keysight N6705 DC power analyzer can also function as a data logger. Using the measurement capability built into each DC power module, the N6705 can continuously log data to the large color display and to a file. Data can be simultaneously logged on all four DC outputs. The accuracy of the voltage and current measurements depends on the type of module that is installed (basic, high-performance, precision, and SMU).

As illustrated in the table below, there are two modes of operation:

- In standard mode, measurements are spaced by the sample period, which is programmable from 75 milliseconds to 60 seconds. For each DC output, voltage measurements, current measurements, or both can be logged. Each reading is an integrated voltage or current measurement. Standard mode data logging is available on all DC power module types.
- In continuous sampling mode, the built-in digitizer of the DC power module runs continuously at 50,000 readings per second. You can specify a sample period, which is the period of time during which these continuous readings will be accumulated. For each sample period, one average reading (and optionally, a minimum and maximum value) is saved. In this mode, the digitizer runs continuously as the readings are averaged and stored; therefore, the digitizer is always making measurements and no data is missed. The sample period is programmable from 20 microseconds to 60 seconds. In this mode, the N6760 and N6780 SMU series of power modules offer simultaneous logging of output voltage and output current. For all other module types, you can log either voltage or current when in continuous sampling mode.

The maximum data log file size is ~2 gigabytes, which is approximately one billion readings. The data file can be stored on the N6705's internal non-volatile RAM or saved externally on a USB memory device.

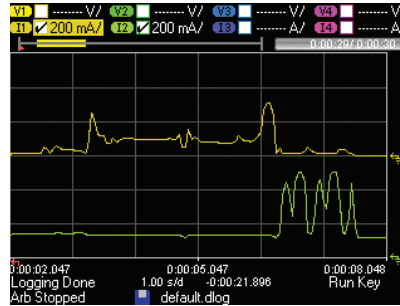


Figure 6. In Data Logger View, you can log data on multiple traces. Here, the current flowing out of output 1 and output 2 are captured over 30 seconds.

The data logger display can be saved as a GIF file for use in reports. The logged data can be saved for viewing at a later time. Logged data can also be exported to a CSV file that can be read by most common data analysis software packages.

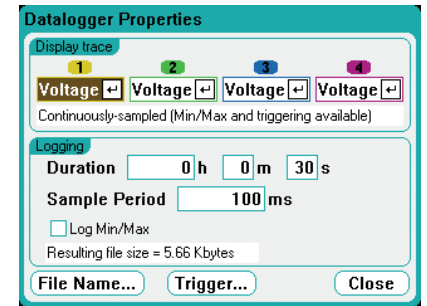
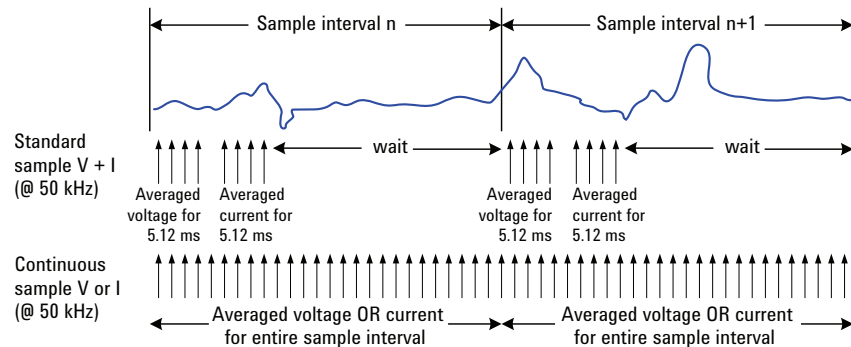


Figure 7. To set up the data logger, use a menu screen to select the operating parameters. Setup screens like this are used throughout the DC power analyzer.



|                                 | Standard data logging   | Continuous data logging  |
|---------------------------------|---|--|
| Sample interval range           | 75 milliseconds to 60 seconds   | 20* microseconds to 60 seconds<br>* Add 20 $\mu$ s for each additional parameter (Voltage, Current, Min, or Max)   |
| Sample rate:                    | 50 kHz  | 200 kHz for N6780 SMU<br>50 kHz for all others   |
| Data logging mode used by N6705 | Automatically selected when any N6730, N6740, N6750, or N6770 are set to sample BOTH voltage and current. | Automatically selected when any N6730, N6740, N6750 or N6770 is set to measure either voltage or current. Note that N6760 and N6780 SMU modules can be set to sample BOTH. |

## Arbitrary Waveform Generator

Each DC power output on the Keysight N6705 DC power analyzer can be modulated by the module's built-in arbitrary waveform generator. This permits the output to act as a DC bias transient generator or power arbitrary waveform generator. The maximum bandwidth is based on the type of module that is installed (basic, high-performance, precision, and SMU). Refer to the Keysight N6700 Modular Power System Family Specifications Guide\* for the bandwidth of each DC power module.

The Keysight N6705 uses run length encoding, where each point in the waveform is defined by the voltage setting and the dwell time or duration to stay at that setting. Waveforms can be generated by specifying only a small number of points. For example, a pulse would only take three points to define it.

The Keysight N6705 offers the following waveform choices (see table below).

For each waveform, you can set it to repeat continuously or you can specify the number of times the waveform is repeated.

| Arbitrary waveform (voltage or current)                                    | Number of points per waveform                                     |
|--|---|
| Sine   | 100 points  |
| Step   | 2 points  |
| Ramp   | 100 points  |
| Pulse  | 3 points  |
| Stepped ramp (or staircase)  | Determined by the number of steps programmed                      |
| Exponential  | 100 points  |
| Trapezoid  | 100 points  |
| User-defined waveform<br>(where the output is a voltage or current source) | Up to 512 points with point-by-point adjustable dwell             |
| Constant-dwell waveform  | Up to 64,000 points with programmable dwell (same for all points) |

For example, to generate a pulse train of 10 identical pulses, you can program the parameters for one pulse and then specify that you want it to repeat 10 times.

For user-defined voltage and current waveforms, you can download up to 512 setpoints of voltage or current. For each setpoint, a dwell time is specified and output will stay (i.e., dwell) at that setpoint for the programmed dwell time value. For each of the 512 setpoints in the user-defined waveform, you can have a different dwell time from 0 to 262 seconds with 1 microsecond resolution. The module will step through the user-defined table of values, staying at each setpoint for the programmed dwell time, and then it will move on to the next point. User-defined waveforms can be imported from a CSV file or directly entered from the front panel of the DC power analyzer.

Constant-dwell voltage or current waveforms can also be generated, with up to 64,000 programmable points.



Figure 8. The Arb Selection menu is used to select which pre-programmed waveform will be applied to the output of the DC power module. Each of the four outputs can have a different waveform applied.



Figure 9. Once you have selected a waveform, you simply fill in the blanks to describe the waveform.

\* Complete specifications are available at <http://literature.cdn.keysight.com/litweb/pdf/N6700-90001.pdf>



## Additional Features

### Output sequencing

Each DC power module can be individually set to turn on or turn off with a delay. By adjusting the delay times and then commanding the Keysight N6705 to turn on, you can set the Keysight N6705 modules to sequence on in a particular order. The same sequencing capability is available to shut down the modules in particular order. Delay times can be set from no delay to one thousand seconds of delay in one-millisecond increments.

For applications that require more than four DC power modules to be sequenced, this output sequencing can be extended across multiple Keysight N6705 mainframes. By wiring the I/O ports on the rear panel of the mainframes together, a pair of synchronization signals is sent between mainframes, allowing the output sequences of each mainframe to be synchronized.

This capability is also supported to link Keysight N6705 output sequences with outputs installed in N6700B, N6701A and N6702A Low-Profile Modular Power System mainframes. It is not supported on the discontinued N6700A mainframe.

### Programmable voltage slew

For some applications, like inrush limiting or powering rate-sensitive devices, it is necessary to slow down and control the speed of the DC output to maintain a specific voltage slew rate. The Keysight N6705 provides programmable voltage slew rate, so that you can easily control the speed at which the output slews from one voltage to another. You can set the speed of a voltage change anywhere from its maximum up/down programming speed to its slowest change of up to 10 seconds.

### Series and parallel operation

To increase available voltage and power per output, identically rated outputs can be operated directly in series. The maximum series operation is 240 V. To increase the available current and power per output, identically rated outputs can be operated directly in parallel. The maximum rated parallel operation is 100 A per Keysight N6705.

### Convenient front panel connections

The N6705 uses 3-way binding posts on the front panel for connection to the DUT. The binding posts accept standard banana plugs, bare wire, and spade-lug connectors. The binding posts are rated for 20 A per post. To avoid setup and connection errors, the binding posts are color-coded to the control keys and the display. For modules with outputs rated at greater than 20 A, such as the N6753A, high current wires must be brought out through the N6705's rear panel.

The N6705B mainframe provides rear panel access ports to route these wires. If you have an N6705A mainframe, order N6705U-057 to replace your rear panel.

### 4-wire sensing for improved measurement accuracy

To improve the voltage measurement accuracy and regulation of the DC outputs, the Keysight N6705 DC power analyzer offers 4-wire sensing capability, also called remote sensing, on each of the four outputs of the DC power analyzer. 4-wire remote sensing is useful when the DUT draws high current and you want to account for voltage drop in the power leads to achieve tight regulation and high voltage measurement accuracy.



Figure 10. The Output On/Off Delays screen allows you to enter the delay times for each output. A graphical representation of the settings is shown to visually confirm your choices.

To use 4-wire sensing in addition to your power leads, you must connect two low current sensing leads between the DUT input terminals and 4-wire sense terminal binding posts located on the front of the N6705 mainframe. This permits the output module to monitor and regulate its output voltage directly at the DUT input terminals instead of the N6705 front panel output binding posts. It then automatically adjusts its output voltage to compensate for voltage drops across the resistance in the power leads.

For convenience, switching between 2-wire mode (local sensing) and 4-wire mode (remote sensing) is done via an internal relay inside the N6705 DC power analyzer, eliminating the need for shorting bars or jumpers commonly found on other bench power sources.

## DC power modules offer low noise outputs

Careful attention has been paid to this design to ensure low normal mode noise (ripple and peak-peak) as well as low common mode noise. While all DC power modules are switching power supplies, the N6750 high-performance autoranging DC power modules, the N6760 precision DC power modules, and the N6780 Source Measure Units are switching power supply designs that outperform most linear power supplies on the market.

## DC power modules provide fast voltage changes

When it comes to speed, the N6750 high-performance autoranging DC power modules, the N6760 precision DC power modules, and the N6780 Source Measure Units achieve performance unlike a typical DC power supply. Thanks to an active down-programming circuit to rapidly pull down the output when lowering the output voltage, these power modules can rapidly program both up and down in voltage. Changing voltage from 0 V to 50 V, or 50 V to 0 V for example, can be accomplished in less than 1.5 milliseconds.

Note that for smaller voltage changes, from 0 V to 5 V or 5 V to 0 V for example, the programming speed is less than 200 microseconds. These output speeds allow the N6750/60/80 to give maximum system through-put when your test calls for frequent changes in power supply voltage settings.

## Autoranging for flexibility

The N6750 high-performance auto-ranging DC power modules and the N6760 precision DC power modules give you even more flexibility by providing autoranging outputs. This autoranging capability provides maximum output power at any output voltage up to 60 V. This allows one power supply to do the job of several power supplies, because its operating range covers low voltage, high current as well as high voltage, low current operating points. For example, the N6755A high-performance, autoranging DC module, rated at 20 V, 50 A, and 500 W can provide full power at:

10 V @ 50 A (= 500 W),  
20 V @ 25 A (= 500 W),  
15 V @ 33 A (= 500 W),  
or anywhere in between.

Therefore, this 500 W autoranging power supply, due to its extended voltage and current range, can produce voltage and current combinations in the range of a 1000 W non-autoranging power supply.



Figure 11. The Keysight N6705 DC power analyzer is a perfect size for the bench.

## Real time clock

The Keysight N6705 DC power analyzer has a built-in battery backed real time clock. This allows for proper time-stamping of logged data. It is also used to tag files with correct creation dates.

## Front panel USB

The Keysight N6705 DC power analyzer provides a convenient front panel USB port designed exclusively for data storage devices, such as USB memory devices or USB hard drives. On devices connected to this USB port, you can save test setups, test results, and screen images. It is also an easy way to move test setup files between two N6705 DC power analyzers or test results between the DC power analyzer and a PC. You can also log data directly to the USB device plugged into the front panel. This extends the total storage capability of the N6705.

## Internal memory

The Keysight N6705 DC power analyzer has 4 gigabytes of non-volatile storage. This storage is shared between the four DC outputs. It can be used for saving test setups, test results, and screen images. External USB storage is supported for increased storage capacity to log data longer.

## Emergency stop

Should a hazardous situation occur during testing, you can press the large red emergency stop button on the front panel of the Keysight N6705. Pressing this easy-to-find button immediately removes power from the DC outputs. However, any data collection (such as a scope trace or data log) that is running at the time will continue to run. By doing so, the data you were collecting is saved and you will get a record of what was happening at the time of the event that caused you to press the emergency stop button. The measurements could aid in failure analysis, repair, or debugging of the DUT.

## DUT protection features

Each Keysight N6705 DC power module is protected against over-voltage, over-current, and over-temperature. A fault condition in one module can be detected within 10 microseconds by other modules so that they can be quickly shut down to avoid hazardous conditions on your DUT.

## Output disconnect and polarity reversal relays

Modules in the Keysight N6705 can be individually ordered with optional Output Disconnect Relays (option 761) or Output Disconnect/Polarity Reversal Relays (option 760). See table on page 21 for option 760 and 761 availability. All relays are built into the module, so no additional wiring is needed to incorporate the relay function.

Although the plus and minus rail of the output power mesh are physically disconnected from the output terminals with options 760 and 761, a small AC network is still connected across the plus and minus output terminals. This AC network is required for EMI compliance.

With option 761, Output Disconnect Relays, an emergency condition or turning the DC output off causes mechanical relays disconnect both the plus and minus side of the power supply, including the sense leads.

With option 760, Output Disconnect/Polarity Reversal Relays, mechanical relays switch the leads on both the plus and the minus side of the power supply, including the sense leads, resulting in a voltage polarity reversal at the DUT. In addition to polarity reversal, option 760 provides the same output disconnect function as option 761.

Note: Output current is limited on some modules when option 760 Output Disconnect/Polarity Reversal Relays is installed. See the “Available options” tables on page 21 for more information about maximum current limitations with option 760.



Figure 12. The N6705's front panel USB port.



Figure 13. The emergency stop button shuts down all outputs immediately.

## Triggering

The Keysight N6705 DC power analyzer has hardware trigger in/trigger out signals which permit the Keysight N6705 to be synchronized with other test equipment. For example, when you turn on the outputs of the Keysight N6705, it can generate a trigger signal to start a measurement on an RF power meter.

## Connectivity

The Keysight N6705 DC power analyzer comes standard with GPIB, USB 2.0, and 10/100 base-T ethernet LAN interfaces. The Keysight N6705 is fully compliant with the LXI class C specification.

## Security

All non-volatile RAM data and settings can be cleared from the front panel. For customers who have security concerns about USB access to internally stored test data and setups, the Keysight N6705 also offers option AKY, which removes the USB ports from the front and rear of the Keysight N6705. When used in systems running GPIB, the LAN and/or USB interfaces can be disabled for extra security.

## Control from any browser

The Keysight N6705 can be controlled via a standard web browser. The Keysight N6705 contains a web server that provides a webpage containing a graphical front panel representation of the Keysight N6705 front panel. The Web GUI operation is identical to operating the real front panel on the Keysight N6705 DC power analyzer.

## Drivers

For customers who wish to operate the DC power analyzer under computer control, the Keysight N6705 comes with both VXI **plug&play** drivers and IVI-COM drivers. LabView drivers are available at NI.COM.

## Programming language

The Keysight N6705 supports SCPI (Standard Commands for Programmable Instruments). Note that the Keysight N6705's command set is compatible with the N6700 modular power system for ATE, so programs written for the Keysight N6700 will work on the Keysight N6705.

## Firmware updates

The Keysight N6705 firmware is stored in FLASH ROM and can be easily updated when new features become available. Firmware can be downloaded into the Keysight N6705 over GPIB, LAN, or USB using the supplied firmware update utility program. Firmware updates can be found at [www.keysight.com/find/N6705firmware](http://www.keysight.com/find/N6705firmware).

## 14585A control & analysis software

Control up to four N6705 mainframes. For details visit [www.keysight.com/find/14585](http://www.keysight.com/find/14585)

### Makes a great tool for ATE systems that require an advanced user interface for test and debug

While the Keysight N6705 DC power analyzer is designed primarily as an R&D bench tool, customers building ATE systems may find the Keysight N6705 has great utility in an ATE system. It is fully programmable, LXI class C certified, and takes the same commands as the Keysight N6700. But thanks to its large display and easy to use controls, test engineers may find the Keysight N6705 makes a great tool for visualizing test results as the tests execute, for DUT troubleshooting, for DUT debugging, and for ATE test development. The Keysight N6705 mounts in a standard 19" rack using standard rack mount hardware for 4 U instruments.

### Achieve correlation and share data between R&D and manufacturing

The Keysight N6705 DC power analyzer is a modular system that uses the same DC power modules as the N6700 low-profile modular power system for ATE. Customers who use the N6705 in R&D and the N6700 in manufacturing can easily achieve test correlation between R&D testing, design characterization/validation testing, and manufacturing testing because the DC power modules are common to both the bench and ATE versions of the product. Test programs can be easily shared between R&D and manufacturing since the Keysight N6705 and the Keysight N6700 share a common command set.

### Power management feature allows you to allocate N6705 mainframe power

Often, a DUT requires some high power DC sources and several very low power DC sources. In this case, you may choose to configure a system where the sum of the power modules installed in the Keysight N6705 exceeds the total power available from the Keysight N6705 mainframe. The power management features of the Keysight N6705 allow you to allocate mainframe power to the outputs where it's needed, achieving maximum asset utilization and flexibility. This feature provides safety from unexpected and dangerous shutdowns that can occur with power systems without power management when operated in a similar way. For example, if your DUT

requires 250 W on two of its inputs, but only 10 W each on two auxiliary inputs, you can configure a system consisting of two 300 W DC modules and two 50 W DC modules. Although the sum of the module power is greater than 600 W, you can still use the Keysight N6705. Thanks to the power management feature, you can allocate the 250 W each to the two 300 W modules while you allocate only 25 W to each of the 50 W modules.

### Universal AC input

The Keysight N6705 has a universal input that operates from 100-240 VAC, 50/60/400 Hz. There are no switches to set or fuses to change when switching from one voltage standard to another. The AC input employs power factor correction.



Figure 14. The Keysight N6705 can be installed in a standard 19 inch rack.

## Choosing the Right DC Power Modules to Meet Your Testing Needs

### N6730/40/70 basic series

Use the N6730/40/70 DC power modules for basic applications – Now with voltages up to 150 V

Not all testing requires high-performance power supplies. When your budget is tight and when speed and accuracy are a lower consideration, the N6730 Series of 50 W DC power modules, the N6740 Series of 100 W DC power modules, and the N6770 Series of 300 W DC power modules are an economical solution that give you clean, reliable DC power.

The N6730/40/70 series DC power modules provide programmable voltage and current, measurement and protection features at a very economical price. These power modules offer a wide range of voltage, current, and power outputs. In oscilloscope mode, they can be configured to display either a voltage or a current trace.

### N6750 high-performance series

Use the N6750 DC power modules for applications where the power supply plays a critical role – Now with available power up to 500 W

The Keysight N6750 series of high-performance, autoranging DC power modules provide low noise, high accuracy, and output voltage changes that are up to 10 to 50 times faster than other power supplies. Additionally, autoranging output capabilities enable one power supply to do the job of several traditional power supplies.



Figure 15. The basic series.

The N6750 series combine the widest arbitrary waveform generator bandwidth, available power up to 500 W, and high-accuracy measurements. In oscilloscope mode, they can be configured to display either a voltage or a current trace.

### N6760 precision series

Use the N6760 DC power modules for applications where precision low-level performance is required – Now with available power up to 500 W

The N6760 precision DC power modules provide dual ranges on both programming and measurement. In the low range, these power supplies provide 16-bit voltage and current programming, and 18-bit measurements precision in the milliamperere and microampere region. They are ideally suited for semiconductor and passive device testing, or where a precisely controlled output and highly accurate, precise, measurements are needed during test.

The N6760 precision DC power modules also provide fast output changes for wide arbitrary waveform generator bandwidth. In oscilloscope mode, the precision DC power modules offer the ability to view both a voltage and a current trace simultaneously.

### N6780 SMU series

Use the N6780 source/measure units for the most demanding applications where multi-quadrant operation and high precision are required

The N6780 series of source/measure units offer the highest level of performance in the N6700 series. These SMUs feature highly accurate measurements down to nanoamperes, while providing operation as a DC voltage source, DC current source, and electronic load.

For details on these products and how they can be used for applications including battery drain analysis and functional test, visit [www.keysight.com/find/N6780](http://www.keysight.com/find/N6780) and download the *N6780 Series Source/Measure Units (SMUs) for the N6700 Modular Power System Data Sheet*, literature number 5990-5829EN.

### N6783 application-specific series

For details on these products and how they can be used for specific applications visit [www.keysight.com/find/N6783A-BAT](http://www.keysight.com/find/N6783A-BAT) [www.keysight.com/find/N6783A-MFG](http://www.keysight.com/find/N6783A-MFG) and download the *N6783A-BAT Data Sheet*, 5990-8662EN and the *N6783A-MFG Data Sheet*, 5990-8643EN.



Figure 16. The N6750 high-performance series and N6760 precision series DC power modules that are  $\geq 300$  W each occupy two modules slots within the mainframe. All other modules occupy one module slot.

## DC Power Module Feature Map

For detailed product specifications and characteristics, refer to the *Keysight N6700 Modular Power System Family Specifications Guide* at <http://literature.cdn.keysight.com/N6700-90001.pdf>.

| Feature<br>(● = available)                    | DC power<br>N673xB, N674xB,<br>N677xA | High-performance<br>N675xA | Precision<br>N676xA |
|---|---------------------------------------|----------------------------|---------------------|
| 50 W output rating                            | N6731B – N6736B                       | N6751A                     | N6761A              |
| 100 W output rating                           | N6741B – N6746B                       | N6752A                     | N6762A              |
| 300 W output rating                           | N6773A – N6777A                       | N6753A, N6754A             | N6763A, N6764A      |
| 500 W output rating                           |                                       | N6755A, N6756A             | N6765A, N6766A      |
| Output disconnect relays                      | Option 761                            | Option 761                 | Option 761          |
| Output disconnect/polarity reversal relays    | Option 760                            | Option 760                 | Option 760          |
| Arbitrary waveform generation                 | ●                                     | ●                          | ●                   |
| Autoranging output capability                 |                                       | ●                          | ●                   |
| Voltage or current turn-on priority           |                                       |                            | N6761A, N6762A      |
| Precision voltage and current measurements    |                                       |                            | ●                   |
| Low voltage and current output ranges         |                                       |                            | N6761A, N6762A      |
| Low voltage and current measurement ranges    |                                       |                            | ●                   |
| 200 µA measurement range (N6761A/N6762A only) |                                       |                            | Option 2UA          |
| Voltage or current scope traces               | ●                                     | ●                          | ●                   |
| Simultaneous voltage and current scope traces |                                       |                            | ●                   |
| Simultaneous voltage and current data logging |                                       |                            | ●                   |
| Interleaved voltage and current data logging  | ●                                     | ●                          |                     |
| Dynamic current correction                    | ●                                     | N6751A, N6752A             | N6761A, N6762A      |
| SCPI command list capability                  | ●                                     | ●                          | ●                   |
| SCPI command array readback                   | ●                                     | ●                          | ●                   |
| SCPI command programmable sample rate         | ●                                     | ●                          | ●                   |
| SCPI command external data logging            | ●                                     | ●                          | ●                   |
| Double-wide (occupies 2 channel locations)    |                                       | N6753A – N6756A            | N6763A – N6766A     |

## DC Power Module Feature Map, continued

| Feature<br>(● = available)                    | Source/measure units (SMU) |        |        |        |        | Application-specific |            |
|---|----------------------------|--------|--------|--------|--------|----------------------|------------|
|   | N6781A                     | N6785A | N6782A | N6786A | N6784A | N6783A-BAT           | N6783A-MFG |
| Output rating                                 | 20 W                       | 80 W   | 20 W   | 80 W   | 20 W   | 24 W                 | 18 W       |
| 2-quadrant operation                          | ●                          | ●      | ●      | ●      |        | ●                    | ●          |
| 4-quadrant operation                          |                            |        |        |        | ●      |                      |            |
| Auxiliary voltage measurement input           | ●                          | ●      |        |        |        |                      |            |
| Output disconnect relays                      | ●                          | ●      | ●      | ●      | ●      | Option 761           | Option 761 |
| Arbitrary waveform generation                 | ●                          | ●      | ●      | ●      | ●      | ●                    | ●          |
| Negative voltage protection                   | ●                          | ●      | ●      | ●      | ●      | ●                    | ●          |
| Voltage or current priority mode              | ●                          | ●      | ●      | ●      | ●      |                      |            |
| CC load/CV load                               | ●                          | ●      | ●      | ●      | ●      |                      |            |
| Battery emulator/charger                      | ●                          | ●      | ●      | ●      | ●      |                      |            |
| Voltage/current measurement only              | ●                          | ●      | ●      | ●      | ●      |                      |            |
| Programmable output resistance                | ●                          | ●      |        |        |        |                      |            |
| 600 mV output range                           | ●                          |        | ●      |        | ●      |                      |            |
| 300 mA output range                           | ●                          |        | ●      |        |        |                      |            |
| 100 mA, 10 mA output ranges                   |                            |        | ●      |        | ●      |                      |            |
| 1 V, 100 mV measurement ranges                | ●                          |        | ●      |        | ●      |                      |            |
| 100 mA, 1 mA, 10 $\mu$ A measurement ranges   | ●                          |        | ●      |        | ●      |                      |            |
| 8 A, 100 mA, 1 mA measurement ranges          | ●                          | ●      | ●      | ●      | ●      |                      |            |
| 150 mA measurement range                      |                            |        |        |        |        | ●                    | ●          |
| Voltage or current scope traces               | ●                          | ●      | ●      | ●      | ●      | ●                    | ●          |
| Simultaneous voltage and current scope traces | ●                          | ●      | ●      | ●      | ●      |                      |            |
| Simultaneous voltage and current data logging | ●                          | ●      | ●      | ●      | ●      |                      |            |
| Interleaved voltage and current data logging  |                            |        |        |        |        | ●                    | ●          |
| Seamless measurement autoranging              | ●                          | ●      | ●      | ●      |        |                      |            |
| SCPI command list capability                  | ●                          | ●      | ●      | ●      | ●      | ●                    | ●          |
| SCPI command array readback                   | ●                          | ●      | ●      | ●      | ●      | ●                    | ●          |
| SCPI command programmable sample rate         | ●                          | ●      | ●      | ●      | ●      | ●                    | ●          |
| SCPI command external data logging            | ●                          | ●      | ●      | ●      | ●      | ●                    | ●          |
| SCPI command histogram measurements           | ●                          | ●      | ●      | ●      |        |                      |            |



## DC Power Module Key Performance Specifications

Note: This data sheet does not include a comprehensive list of all power module specifications and characteristics. Complete performance specifications and supplemental characteristics for all power modules can be found at <http://literature.cdn.keysight.com/litweb/pdf/N6700-90001.pdf>. See the *Keysight N6700 Modular Power System Family Specifications Guide*, part number N6700-90001.

|                         | DC output ratings<br>(volts/amps/watts) | Ripple & noise (p-p/<br>rms) | Voltage program-<br>ming accuracy | Current program-<br>ming accuracy | Voltage measure-<br>ment accuracy | Current measure-<br>ment accuracy |
|-------------------------|---|------------------------------|-----------------------------------|-----------------------------------|-----------------------------------|-----------------------------------|
| N6731B                  | 5 V/10 A/50 W                           | 10 mV/2 mV                   | 0.1% + 19 mV                      | 0.15% + 20 mA                     | 0.1% + 20 mV                      | 0.15% + 20 mA                     |
| N6732B                  | 8 V/6.25 A/50 W                         | 12 mV/2 mV                   | 0.1% + 19 mV                      | 0.15% + 20 mA                     | 0.1% + 20 mV                      | 0.15% + 10 mA                     |
| N6733B                  | 20 V/2.5 A/50 W                         | 14 mV/3 mV                   | 0.1% + 20 mV                      | 0.15% + 20 mA                     | 0.1% + 20 mV                      | 0.15% + 5 mA                      |
| N6734B                  | 35 V/1.5 A/52.5 W                       | 15 mV/5 mV                   | 0.1% + 35 mV                      | 0.15% + 20 mA                     | 0.1% + 35 mV                      | 0.15% + 4 mA                      |
| N6735B                  | 60 V/0.8 A/50 W                         | 25 mV/9 mV                   | 0.1% + 60 mV                      | 0.15% + 20 mA                     | 0.1% + 60 mV                      | 0.15% + 4 mA                      |
| N6736B                  | 100 V/0.5 A/50 W                        | 30 mV/18 mV                  | 0.1% + 100 mV                     | 0.15% + 10 mA                     | 0.1% + 100 mV                     | 0.15% + 2 mA                      |
| N6741B                  | 5 V/20 A/100 W                          | 20 mV/2 mV                   | 0.1% + 19 mV                      | 0.15% + 20 mA                     | 0.1% + 20 mV                      | 0.15% + 20 mA                     |
| N6742B                  | 8 V/12.5 A/100 W                        | 12 mV/2 mV                   | 0.1% + 19 mV                      | 0.15% + 20 mA                     | 0.1% + 20 mV                      | 0.15% + 10 mA                     |
| N6743B                  | 20 V/5 A/100 W                          | 14 mV/3 mV                   | 0.1% + 20 mV                      | 0.15% + 20 mA                     | 0.1% + 20 mV                      | 0.15% + 5 mA                      |
| N6744B                  | 35 V/3 A/105 W                          | 15 mV/5 mV                   | 0.1% + 35 mV                      | 0.15% + 20 mA                     | 0.1% + 35 mV                      | 0.15% + 4 mA                      |
| N6745B                  | 60 V/1.6 A/100 W                        | 25 mV/9 mV                   | 0.1% + 60 mV                      | 0.15% + 20 mA                     | 0.1% + 60 mV                      | 0.15% + 4 mA                      |
| N6746B                  | 100 V/1 A/100 W                         | 30 mV/18 mV                  | 0.1% + 100 mV                     | 0.15% + 10 mA                     | 0.1% + 100 mV                     | 0.15% + 2 mA                      |
| N6751A                  | 50 V/5 A/50 W                           | 4.5 mV/0.35 mV               | 0.06% + 19 mV                     | 0.1% + 20 mA                      | 0.05% + 20 mV                     | 0.1% + 4 mA                       |
| N6752A                  | 50 V/10 A/100 W                         | 4.5 mV/0.35 mV               | 0.06% + 19 mV                     | 0.1% + 20 mA                      | 0.05% + 20 mV                     | 0.1% + 4 mA                       |
| N6753A                  | 20 V/50 A/300 W                         | 5 mV/1 mV                    | 0.06% + 10 mV                     | 0.1% + 30 mA                      | 0.05% + 10 mV                     | 0.1% + 30 mA                      |
| N6754A                  | 60 V/20 A/300 W                         | 6 mV/1 V                     | 0.06% + 25 mV                     | 0.1% + 12 mA                      | 0.05% + 25 mV                     | 0.1% + 8 mA                       |
| N6755A                  | 20 V/50 A/500 W                         | 5 mV/1 mV                    | 0.06% + 10 mV                     | 0.1% + 30 mA                      | 0.05% + 10 mV                     | 0.1% + 30 mA                      |
| N6756A                  | 60 V/17 A/500 W                         | 6 mV/1 V                     | 0.06% + 25 mV                     | 0.1% + 12 mA                      | 0.05% + 25 mV                     | 0.1% + 8 mA                       |
| N6761A <sup>1</sup>     | 50 V/1.5 A/50 W                         | 4.5 mV/0.35 mV               | 0.016% + 6 mV                     | 0.04% + 0.2 mA                    | 0.016% + 6 mV                     | 0.04% + 0.16 mA                   |
| N6762A <sup>1</sup>     | 50 V/3 A/100 W                          | 4.5 mV/0.35 mV               | 0.016% + 6 mV                     | 0.04% + 0.2 mA                    | 0.016% + 6 mV                     | 0.04% + 0.16 mA                   |
| N6763A <sup>1</sup>     | 20 V/50 A/300 W                         | 5 mV/1 mV                    | 0.03% + 5 mV                      | 0.1% + 15 mA                      | 0.03% + 10 mV                     | 0.1% + 10 mA                      |
| N6764A <sup>1</sup>     | 60 V/20 A/300 W                         | 6 mV/1 V                     | 0.03% + 12 mV                     | 0.1% + 15 mA                      | 0.03% + 25 mV                     | 0.1% + 5 mA                       |
| N6765A <sup>1</sup>     | 20 V/50 A/500 W                         | 5 mV/1 mV                    | 0.03% + 5 mV                      | 0.1% + 15 mA                      | 0.03% + 10 mV                     | 0.1% + 10 mA                      |
| N6766A <sup>1</sup>     | 60 V/17 A/500 W                         | 6 mV/1 V                     | 0.03% + 12 mV                     | 0.1% + 15 mA                      | 0.03% + 25 mV                     | 0.1% + 5 mA                       |
| N6773A                  | 20 V/15 A/300 W                         | 20 mV/3 mV                   | 0.1% + 20 mV                      | 0.15% + 60 mA                     | 0.1% + 20 mV                      | 0.15% + 15 mA                     |
| N6774A                  | 35 V/8.5 A/300 W                        | 22 mV/5 mV                   | 0.1% + 35 mV                      | 0.15% + 60 mA                     | 0.1% + 35 mV                      | 0.15% + 12 mA                     |
| N6775A                  | 60 V/5 A/300 W                          | 35 mV/9 mV                   | 0.1% + 60 mV                      | 0.15% + 60 mA                     | 0.1% + 60 mV                      | 0.15% + 12 mA                     |
| N6776A                  | 100 V/3 A/300 W                         | 45 mV/18 mV                  | 0.1% + 100 mV                     | 0.15% + 30 mA                     | 0.1% + 100 mV                     | 0.15% + 6 mA                      |
| N6777A                  | 150 V/2 A/300 W                         | 68 mV/27 mV                  | 0.1% + 150 mV                     | 0.15% + 30 mA                     | 0.1% + 150 mV                     | 0.15% + 6 mA                      |
| N6781A <sup>1</sup>     | 20 V/± 3 A/20 W                         | 12 mV/1.2 mV                 | 0.025% + 1.8 mV                   | 0.04% + 0.3 mA                    | 0.025% + 1.2 mV                   | 0.03% + 0.25 mA                   |
| N6782A <sup>1</sup>     | 20 V/±3 A/20 W                          | 12 mV/1.2 mV                 | 0.025% + 1.8 mV                   | 0.04% + 0.3 mA                    | 0.025% + 1.2 mV                   | 0.03% + 0.25 mA                   |
| N6784A <sup>1</sup>     | ± 20 V/± 3 A/20 W                       | 12 mV/1.2 mV                 | 0.025% + 1.8 mV                   | 0.04% + 0.3 mA                    | 0.025% + 1.2 mV                   | 0.03% + 0.25 mA                   |
| N6783A-BAT <sup>2</sup> | 8 V/-2 A to 3 A/24 W                    | 8 mV/1.5 mV                  | 0.1% + 10 mV                      | 0.1% + 1.8 mA                     | 0.05% + 5 mV                      | 0.1% + 0.6 mA                     |
| N6783A-MFG <sup>2</sup> | 6 V/-2 A; 3 A/18 W                      | 8 mV/1.5 mV                  | 0.1% + 10 mV                      | 0.1% + 1.8 mA                     | 0.05% + 5 mV                      | 0.1% + 0.6 mA                     |
| N6785A <sup>1</sup>     | 20 V/+/-8A/80 W                         | 15 mV/1.5 mV                 | 0.025%+1.8 mV                     | 0.04%+1.5 mA                      | 0.025%+1.8 mV                     | 0.04%+1.5 mA                      |
| N6786A <sup>1</sup>     | 20 V/+/-8A/80 W                         | 15 mV/1.5 mV                 | 0.025%+1.8 mV                     | 0.04%+1.5mA                       | 0.025%+1.8 mV                     | 0.04%+1.5 mA                      |

<sup>1</sup> These power modules have multiple output and measurement ranges; values shown are for the highest range.

<sup>2</sup> These power modules have multiple measurement ranges; values shown are for the highest range.

## DC Power Analyzer Mainframe Key Characteristics

| <b>Interface capabilities</b>   |   |
|---------------------------------|---|
| GPIB                            | SCPI – 1993, IEEE 488.2 compliant interface   |
| LXI compliance                  | Class C   |
| USB 2.0                         | Requires Keysight IO Library version M.01.01 or 14.0 and up                         |
| 10/100 LAN                      | Requires Keysight IO Library version L.01.01 or 14.0 and up                         |
| <b>Environmental conditions</b> |   |
| Operating environment           | Indoor use, installation category II (for AC input), pollution degree 2             |
| Temperature range               | 0 °C to 55 °C (output current is derated 1% per °C above 40 °C ambient temperature) |
| Relative humidity               | Up to 95%   |
| Altitude                        | Up to 2000 meters   |
| <b>AC input</b>                 |   |
| Input ratings                   | ~ 100 VAC – 240 VAC; 50/60/400 Hz   |
| Power consumption               | 1440 VA   |
| Power factor                    | 0.99 @ nominal input and rated power  |
| <b>Net weight</b>               |   |
| N6705 with 4 modules (typical)  | 16 kg/35 lbs  |
| <b>Dimensions</b>               |   |
| Height/width/depth              | 194.7 mm/425.6 mm/313 mm  |
|                                 | 7.665 in./16.756 in./12.319 in.   |

## Ordering Information

### The DC power analyzer system is available 2 ways

1. You can order an N6705B mainframe and various modules as separate products. (See steps below.) Each item will arrive in a separate box so that you can assemble the system yourself.
2. You can order an N6715B system, which is a build-to-order DC power analyzer system that is shipped as a fully assembled multiple-output power supply. (See pages 21 and 22 for N6715B ordering information.)

When ordering the DC power analyzer as a mainframe and modules, follow these steps.

#### Step 1

Select the appropriate documentation and line cord options.

#### Step 2

Order 1 to 4 modules (see next page). If the sum of the power of the modules exceeds the available output power rating on the mainframe, see page 13 for an explanation of Keysight's power management capability. Note that each mainframe has 4 module slots to hold modules. Each module occupies one module slot, except for the N6753A–N6756A and N6763A–N6766A which occupy two module slots.

| Mainframe                                 |   |
|---|---|
| N6705B                                    | DC power analyzer mainframe<br>Holds 1 to 4 modules.<br>Total available output power = 600 W  |
| Available options to the N6705B mainframe |   |
| 1CP005A                                   | Rack mount kit  |
| AKY                                       | Delete front/rear USB<br><br>This option removes all USB capability from the DC power analyzer. Both the front panel USB port and the rear panel USB port are removed.  |
| 055                                       | Delete data logger<br><br>This option disables the data logger functionality in the DC power analyzer firmware. The DC power analyzer hardware is unchanged. To enable the data logger functionality at a later time, order the N6705U upgrade kit. |
| 056                                       | Software license<br><br>This option provides a license to control one N6705 mainframe using the 14585A Control & Analysis software.   |
| ABA                                       | Full documentation on CD-ROM and printed users guide  |
| 900                                       | Power cord, United Kingdom, P/N 8120-1351   |
| 901                                       | Power cord, Australia, New Zealand, P/N 8120-1369   |
| 902                                       | Power cord, Europe, Korea, P/N 8120-1689  |
| 903                                       | Power cord, USA, Canada, 120 V, P/N 8120-4383   |
| 904                                       | Power cord, USA, Canada, 240 V, P/N 8120-0698   |
| 906                                       | Power cord, Switzerland, P/N 8120-2104  |
| 912                                       | Power cord, Denmark, P/N 8120-2956  |
| 917                                       | Power cord, South Africa, India, P/N 8120-4211  |
| 918                                       | Power cord, Japan, 100 V, P/N 8120-5342   |
| 919                                       | Power cord, Israel, P/N 8120-6800   |
| 920                                       | Power cord, Argentina, P/N 8120-6869  |
| 921                                       | Power cord, Chile, P/N 8120-6980  |
| 922                                       | Power cord, China, P/N 8120-8376  |
| 927                                       | Power cord, Thailand, Brazil, P/N 8120-8871   |
| Upgrade/retrofit kits                     |   |
| N6705U-001                                | Add data logger<br><br>This option activates the data logger functionality in the DC power analyzer firmware. The DC power analyzer hardware is unchanged.  |
| N6705U-056                                | Software license<br><br>This option provides a license to control one N6705 mainframe using the 14585A Control & Analysis Software.   |
| N6705U-057                                | Rear panel upgrade kit<br><br>This option upgrades the rear panel for an N6705A mainframe with the additional access ports and measurement inputs that are on the N6705B mainframe.   |

For more information, visit [www.keysight.com/find/N6705U](http://www.keysight.com/find/N6705U)

## Ordering Information, *continued*

### Modules

Order 1 to 4 modules to be installed in each N6705B power analyzer mainframe. (To order modules as part of the N6715B, build-to-order systems, see page 22). If the sum of the power of the modules exceeds the available output power rating on the mainframe, see page 13 for an explanation of Keysight's power management capability.

You can individually specify each option for each module. For example, you can order one module with Option 761 Output Disconnect Relays while the remaining modules have no relay options.

As your needs change and you want to change configuration or add more modules to existing N6705 mainframe, use this ordering information to order the required modules.

| Modules   |                                       |  |   |
|---|---------------------------------------|--|---|
| N6730 50 W<br>DC power modules                                  | N6731B                                | 5 V, 10 A, 50 W DC power module  |   |
|   | N6732B                                | 8 V, 6.25 A, 50 W DC power module  |   |
|   | N6733B                                | 20 V, 2.5 A, 50 W DC power module  |   |
|   | N6734B                                | 35 V, 1.5 A, 50 W DC power module  |   |
|   | N6735B                                | 60 V, 0.8 A, 50 W DC power module  |   |
|   | N6736B                                | 100 V, 0.5 A, 50 W DC power module   |   |
| N6740 100 W<br>DC power modules                                 | N6741B                                | 5 V, 20 A, 100 W DC power module   |   |
|   | N6742B                                | 8 V, 12.5 A, 100 W DC power module   |   |
|   | N6743B                                | 20 V, 5 A, 100 W DC power module   |   |
|   | N6744B                                | 35 V, 3 A, 100 W DC power module   |   |
|   | N6745B                                | 60 V, 1.6 A, 100 W DC power module   |   |
| N6750 high-<br>performance,<br>auto-ranging<br>DC power modules | N6751A                                | 50 V, 1.5 A, 50 W high-performance autoranging DC power module                                   |   |
|   | N6752A                                | 50 V, 1.5 A, 50 W high-performance autoranging DC power module                                   |   |
|   | N6753A                                | 20 V, 50 A, 300 W high-performance autoranging DC power module (occupies 2 of 4 mainframe slots) |   |
|   | N6754A                                | 60 V, 20 A, 300 W high-performance autoranging DC power module (occupies 2 of 4 mainframe slots) |   |
|   | N6755A                                | 20 V, 50 A, 500 W high-performance autoranging DC power module (occupies 2 of 4 mainframe slots) |   |
| N6756A  | N6756A                                | 60 V, 17 A, 500 W high-performance autoranging DC power module (occupies 2 of 4 mainframe slots) |   |
|   | N6760 precision<br>DC power modules   | N6761A   | 50 V, 1.5 A, 50 W precision DC power module                                   |
|   |                                       | N6762A   | 50 V, 3 A, 100 W precision DC power module                                    |
|   |                                       | N6763A   | 20 V, 50 A, 300 W precision DC power module (occupies 2 of 4 mainframe slots) |
|   |                                       | N6764A   | 60 V, 20 A, 300 W precision DC power module (occupies 2 of 4 mainframe slots) |
| N6765A  |                                       | 20 V, 50 A, 500 W precision DC power module (occupies 2 of 4 mainframe slots)                    |   |
| N6766A  | N6766A                                | 60 V, 17 A, 500 W precision DC power module (occupies 2 of 4 mainframe slots)                    |   |
|   | N6770 300 W<br>DC power modules       | N6773A   | 20 V, 15 A, 300 W DC power module   |
|   |                                       | N6774A   | 35 V, 8.5 A, 300 W DC power module  |
|   |                                       | N6775A   | 60 V, 5 A, 300 W DC power module  |
|   |                                       | N6776A   | 100 V, 3 A, 300 W DC power module   |
| N6777A  |                                       | 150 V, 2 A, 300 W DC power module  |   |
| N6780 ~80 W<br>application-<br>specific modules                 | N6781A                                | 20 V, $\pm 3$ A, 20 W source/measure unit  |   |
|   | N6782A                                | 20 V, $\pm 3$ A, 20 W source/measure unit  |   |
|   | N6784A                                | $\pm 20$ V, $\pm 3$ A, 20 W source/measure unit  |   |
|   | N6783A-BAT                            | 8 V, 3 A, 24 W battery charge/discharge module   |   |
|   | N6783A-MFG                            | 6 V, 3 A, 18 W mobile communications module  |   |
|   | N6785A                                | 20 V, +/-8A, 80 W source/measure unit  |   |
| N6786A  | 20 V, +/-8A, 80 W source/measure unit |  |   |

## Ordering Information, *continued*

### Available options to N6700 modules

|  | <b>N6731B-<br/>N6736B<br/>50 W<br/>DC power<br/>modules</b> | <b>N6741B-<br/>N6746B<br/>100 W<br/>DC power<br/>modules</b> | <b>N6751A-<br/>N6756A<br/>high-<br/>performance<br/>autoranging<br/>DC power<br/>modules</b> | <b>N6761A-<br/>N6766A<br/>precision<br/>DC power<br/>modules</b> | <b>N6773A-<br/>N6776A<br/>300 W<br/>DC power<br/>modules</b> | <b>N6781A, N6782A,<br/>N6784A<br/>N6785A<br/>N6786A<br/>SMU modules</b> | <b>N6783A-BAT<br/>N6783A-MFG<br/>application-<br/>specific</b> |
|--|---|--|--|--|--|---|--|
| Output disconnect relays                       | 761   | 761  | 761  | 761  | 761  | Standard  | 761  |
| Output disconnect and polarity reversal relays | 760   | 760 <sup>1,2</sup>   | 760 <sup>1</sup>   | 760 <sup>1</sup>   | 760 <sup>2</sup>   | Not available   | Not available  |
| 200 microampere measurement range              | Not available   | Not available  | Not available  | 2UA <sup>3</sup>   | Not available  | Not available   | Not available  |
| Commercial calibration with test results data  | UK6   | UK6  | UK6  | UK6  | UK6  | UK6   | UK6  |
| ISO 17025 calibration certificate              | 1A7   | 1A7  | 1A7  | 1A7  | 1A7  | Not available   | 1A7  |

1. Option 760 is not available on Models N6741B, N6751A, N6752A, N6761A, N6762A.
2. Option 760 limits the output current to 10 A maximum on Models N6742B and N6773A.
3. Option 2UA is only available on Models N6761A and N6762A.

### N6715B build-to-order system

To purchase a DC power analyzer, order an N6715B. This model number is a build-to-order system that is shipped as a fully tested and assembled instrument. Each system consists of one mainframe plus optionally 1 to 4 modules. Each mainframe has 4 module slots to hold modules. Each module occupies one module slot, except for the N6753A – N6755A and the N6763A – N6766A, which occupy two module slots. To specify which modules you want installed in the system, the modules are ordered as options to the system model number. You must order at least one module.

If the sum of the power of the modules exceeds the available output power rating on the mainframe, see page 13 for an explanation of Keysight's power management capability.

If you prefer to purchase a DC power analyzer mainframe and modules as separate pieces, see page 19.

| <b>Build-to-order system</b>                  |  |
|---|--|
| N6715B  | Build-to-order DC power analyzer system, Consists of 1 N6705B mainframe with total available power of 600 W  |
| <b>Available options to the N6715B system</b> |  |
| 1CP005A                                       | Rack mount kit   |
| AKY   | Delete front/rear USB<br>This option removes all USB capability from the DC power analyzer. Both the front panel USB port and the rear panel USB port are removed. |
| 056   | Software license<br>This option provides a license to control one N6705 mainframe using the 14585A Control & Analysis software.                                    |
| ABA   | Full documentation on CD-ROM and printed users guide   |
| 900   | Power cord, United Kingdom, P/N 8120-1351  |
| 901   | Power cord, Australia, New Zealand, P/N 8120-1369  |
| 902   | Power cord, Europe, Korea, P/N 8120-1689   |
| 903   | Power cord, USA, Canada, 120 V, P/N 8120-4383  |
| 904   | Power cord, USA, Canada, 240 V, P/N 8120-0698  |
| 906   | Power cord, Switzerland, P/N 8120-2104   |
| 912   | Power cord, Denmark, P/N 8120-2956   |
| 917   | Power cord, South Africa, India, P/N 8120-4211   |
| 918   | Power cord, Japan, 100 V, P/N 8120-5342  |
| 919   | Power cord, Israel, P/N 8120-6800  |
| 920   | Power cord, Argentina, P/N 8120-6869   |
| 921   | Power cord, Chile, P/N 8120-6980   |
| 922   | Power cord, China, P/N 8120-8376   |
| 927   | Power cord, Thailand, Brazil, P/N 8120-8871  |

## Ordering Information, *continued*

### Modules as options to N6715B

Order 1 to 4 modules as options to an N6715B, specify its model number, followed by “-ATO.” For example, to order an N6731B as an option to the N6710B, you would specify “-ATO.” For example, to order an N6731B as an option to the N6710B, you would specify “N6731B-ATO” as the option. (To order modules as separate products, see page 19). If the sum of the power of the modules exceeds the available output power rating on the mainframe, see page 13 for an explanation of Keysight’s power management capability.

You can individually specify each option for each module. For example, you can order one module with Option 761 Output Disconnect Relays while the remaining modules have no relay options.

| Module options for N6715B system                      |            |  |  |
|---|------------|--|--|
| N6730 50 W DC power modules                           | N6731B-ATO | 5 V, 10 A, 50 W DC power module  |  |
|   | N6732B-ATO | 8 V, 6.25 A, 50 W DC power module  |  |
|   | N6733B-ATO | 20 V, 2.5 A, 50 W DC power module  |  |
|   | N6734B-ATO | 35 V, 1.5 A, 50 W DC power module  |  |
|   | N6735B-ATO | 60 V, 0.8 A, 50 W DC power module  |  |
| N6740 100 W DC power modules                          | N6736B-ATO | 100 V, 0.5 A, 50 W DC power module   |  |
|   | N6741B-ATO | 5 V, 20 A, 100 W DC power module   |  |
|   | N6742B-ATO | 8 V, 12.5 A, 100 W DC power module   |  |
|   | N6743B-ATO | 20 V, 5 A, 100 W DC power module   |  |
| N6750 high-performance, auto-ranging DC power modules | N6744B-ATO | 35 V, 3 A, 100 W DC power module   |  |
|   | N6745B-ATO | 60 V, 1.6 A, 100 W DC power module   |  |
|   | N6751A-ATO | 50 V, 1.5 A, 50 W high-performance autoranging DC power module                                   |  |
|   | N6752A-ATO | 50 V, 1.5 A, 50 W high-performance autoranging DC power module                                   |  |
|   | N6753A-ATO | 20 V, 50 A, 300 W high-performance autoranging DC power module (occupies 2 of 4 mainframe slots) |  |
| N6760 precision DC power modules                      | N6754A-ATO | 60 V, 20 A, 300 W high-performance autoranging DC power module (occupies 2 of 4 mainframe slots) |  |
|   | N6755A-ATO | 20 V, 50 A, 500 W high-performance autoranging DC power module (occupies 2 of 4 mainframe slots) |  |
|   | N6756A-ATO | 60 V, 17 A, 500 W high-performance autoranging DC power module (occupies 2 of 4 mainframe slots) |  |
|   | N6761A-ATO | 50 V, 1.5 A, 50 W precision DC power module  |  |
|   | N6762A-ATO | 50 V, 3 A, 100 W precision DC power module   |  |
|   | N6763A-ATO | 20 V, 50 A, 300 W precision DC power module (occupies 2 of 4 mainframe slots)                    |  |
| N6770 300 W DC power modules                          | N6764A-ATO | 60 V, 20 A, 300 W precision DC power module (occupies 2 of 4 mainframe slots)                    |  |
|   | N6765A-ATO | 20 V, 50 A, 500 W precision DC power module (occupies 2 of 4 mainframe slots)                    |  |
|   | N6766A-ATO | 60 V, 17 A, 500 W precision DC power module (occupies 2 of 4 mainframe slots)                    |  |
|   | N6773A-ATO | 20 V, 15 A, 300 W DC power module  |  |
|   | N6774A-ATO | 5 V, 8.5 A, 300 W DC power module  |  |
| N6780 up to 80 W application-specific modules         | N6775A-ATO | 60 V, 5 A, 300 W DC power module   |  |
|   | N6776A-ATO | 100 V, 3 A, 300 W DC power module  |  |
|   | N6777A-ATO | 150 V, 2 A, 300 W DC power module  |  |
|   | N6781A-ATO | 20 V, $\pm 3$ A, 20 W source/measure unit  |  |
|   | N6782A-ATO | 20 V, $\pm 3$ A, 20 W source/measure unit  |  |
|   | N6784A-ATO | $\pm 20$ V, $\pm 3$ A, 20 W source/measure unit  |  |
| N6783A-BAT  | N6785A-ATO | 20 V, $\pm 8$ A, 80 W source/measure unit  |  |
|   | N6786A-ATO | 20 V, $\pm 8$ A, 80 W source/measure unit  |  |
|   | N6783A-BAT | 8 V, 3 A, 24 W battery charge/discharge module   |  |
|   | N6783A-MFG | 6 V, 3 A, 18 W mobile communications module  |  |

## Need a power solution for ATE?

The Keysight N6700 modular power analyzer is small, flexible, and fast

- Ideal for ATE systems in R&D, design validation, and manufacturing
- Small size: Up to 4 outputs in 1U of rack space
- Flexible, modular system: You can mix and match power levels and performance levels to optimize your investment
- Uses the same modules as the N6705 DC Power Analyzer
- Fast command processing time to improve throughput
- Connect via GPIB, LAN, or USB
- Fully compliant to LXI Class C specification



Complete specifications can be found in the **N6700 Modular Power System Data Sheet**, publication 5958-1411EN. For more information, go to [www.keysight.com/find/N6700](http://www.keysight.com/find/N6700)

## Evolving Since 1939

Our unique combination of hardware, software, services, and people can help you reach your next breakthrough. We are unlocking the future of technology.

From Hewlett-Packard to Agilent to Keysight.



For more information on Keysight Technologies' products, applications or services, please contact your local Keysight office. The complete list is available at: [www.keysight.com/find/contactus](http://www.keysight.com/find/contactus)

### Americas

|               |                  |
|---------------|------------------|
| Canada        | (877) 894 4414   |
| Brazil        | 55 11 3351 7010  |
| Mexico        | 001 800 254 2440 |
| United States | (800) 829 4444   |

### Asia Pacific

|                    |                |
|--------------------|----------------|
| Australia          | 1 800 629 485  |
| China              | 800 810 0189   |
| Hong Kong          | 800 938 693    |
| India              | 1 800 11 2626  |
| Japan              | 0120 (421) 345 |
| Korea              | 080 769 0800   |
| Malaysia           | 1 800 888 848  |
| Singapore          | 1 800 375 8100 |
| Taiwan             | 0800 047 866   |
| Other AP Countries | (65) 6375 8100 |

### Europe & Middle East

|                |               |
|----------------|---------------|
| Austria        | 0800 001122   |
| Belgium        | 0800 58580    |
| Finland        | 0800 523252   |
| France         | 0805 980333   |
| Germany        | 0800 6270999  |
| Ireland        | 1800 832700   |
| Israel         | 1 809 343051  |
| Italy          | 800 599100    |
| Luxembourg     | +32 800 58580 |
| Netherlands    | 0800 0233200  |
| Russia         | 8800 5009286  |
| Spain          | 800 000154    |
| Sweden         | 0200 882255   |
| Switzerland    | 0800 805353   |
|                | Opt. 1 (DE)   |
|                | Opt. 2 (FR)   |
|                | Opt. 3 (IT)   |
| United Kingdom | 0800 0260637  |

For other unlisted countries: [www.keysight.com/find/contactus](http://www.keysight.com/find/contactus) (BP-9-7-17)

**DEKRA Certified**  
ISO 9001 Quality Management System

[www.keysight.com/go/quality](http://www.keysight.com/go/quality)  
Keysight Technologies, Inc.  
DEKRA Certified ISO 9001:2015  
Quality Management System

### myKeysight

#### myKeysight

[www.keysight.com/find/mykeysight](http://www.keysight.com/find/mykeysight)

A personalized view into the information most relevant to you.

[http://www.keysight.com/find/emt\\_product\\_registration](http://www.keysight.com/find/emt_product_registration)

Register your products to get up-to-date product information and find warranty information.

### KEYSIGHT SERVICES

Accelerate Technology Adoption.  
Lower costs.

#### Keysight Services

[www.keysight.com/find/service](http://www.keysight.com/find/service)

Keysight Services can help from acquisition to renewal across your instrument's lifecycle. Our comprehensive service offerings—one-stop calibration, repair, asset management, technology refresh, consulting, training and more—helps you improve product quality and lower costs.



#### Keysight Assurance Plans

[www.keysight.com/find/AssurancePlans](http://www.keysight.com/find/AssurancePlans)

Up to ten years of protection and no budgetary surprises to ensure your instruments are operating to specification, so you can rely on accurate measurements.

#### Keysight Channel Partners

[www.keysight.com/find/channelpartners](http://www.keysight.com/find/channelpartners)

Get the best of both worlds: Keysight's measurement expertise and product breadth, combined with channel partner convenience.

[www.keysight.com/find/n6705](http://www.keysight.com/find/n6705)



Unlocking Measurement Insights

This information is subject to change without notice.  
© Keysight Technologies, 2017  
Published in USA, December 1, 2017  
5989-6319EN  
[www.keysight.com](http://www.keysight.com)