

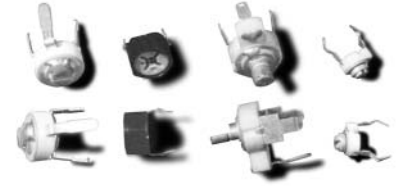


Miniature Ceramic Trimmer Capacitors

242 Series

■ FEATURES

- Excellent microwave characteristics
- Aluminum ceramic stator is used in this series
- Heat, humidity, and cold have little effect on durability and performance
- Reliable characteristics shown by the high Q-factor
- Applicable to various frequencies, from low to ultra-high
- Color coded



■ CHARACTERISTICS

Item	Characteristics		
	4mm Style	6mm Style	7mm Style
Operating Temperature Range	-30°C ~ +85°C	-30°C ~ +85°C	-35°C ~ +85°C
Standard Working Voltage (WVDC)	50	50	250
Withstanding Voltage (VDC)	110	110	500
Insulation Resistance	>10 ⁴ MΩ	>10 ⁴ MΩ	>10 ⁴ MΩ
Rotation Torque	20~150gr-cm	20~200gr-cm	40~400gr-cm

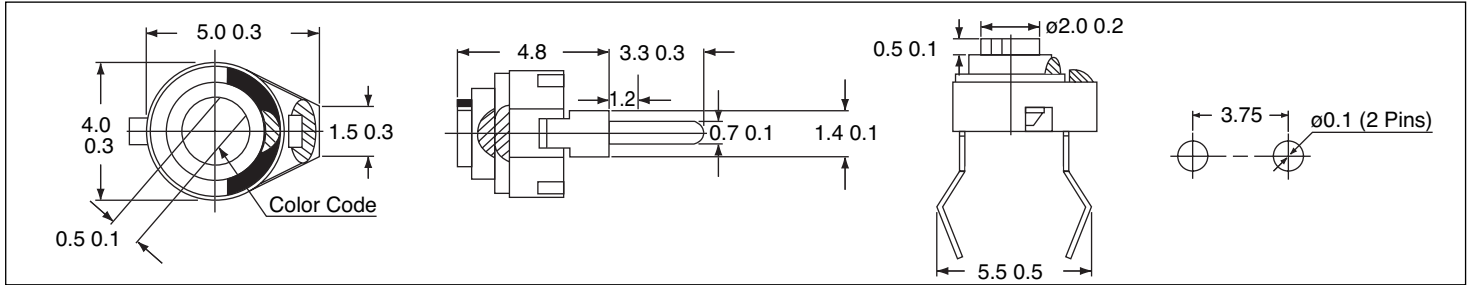
■ PART NUMBERS AND SPECIFICATIONS

Diameter	Part Number	Capacity Range (pF)	Temp. Coeff. (ppm/°C)	Q Factor @10MHz	Color Code
4mm	242-1230	1.2 ~ 3.0	N100±250	>500	Black
	242-1460	1.4 ~ 6.0	N250±250	>500	Red
	242-1810	1.8 ~ 10.0	N550±300	>300	None
	242-2820	2.8 ~ 20.0	N550±300	>300	Blue
	242-4030	4.0 ~ 30.0	N1200±500	>200	Yellow
6mm	242-3010	3.0 ~ 10.0	N470±300	>300	White
	242-4221	4.2 ~ 20.0	N750±300	>300	Red
	242-6230	6.2 ~ 30.0	N750±300	>200	Green
	242-9850	9.8 ~ 50.0	N1200±500	>200	Brown
7mm 3410	242-3410-34	4.0 ~ 34	N500±800	>300	Yellow
	242-3410-45	5.0 ~ 45	N1400±800	>200	Brown
	242-3410-55	5.0 ~ 55	N1400±800	>200	Green
	242-3410-70	6.0 ~ 70	N1400±800	>200	None
7mm 3810	242-3810-12	2.0 ~ 12.0	NPO±200	>300	None
	242-3810-23	2.5 ~ 23.0	N450±200	>300	Blue
	242-3810-45	5.0 ~ 45.0	N1400±800	>200	Brown
	242-3810-55	5.0 ~ 55.0	N1400±800	>200	Green
	242-3810-70	6.0 ~ 70.0	N1400±800	>200	Gray
	242-3810-100	12.0 ~ 100.0	N1400±800	>200 / 1MHz	Black

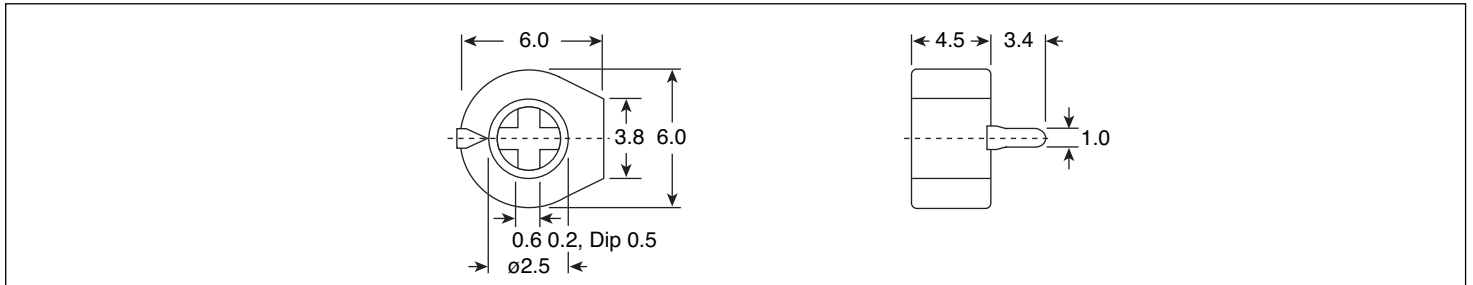


■ DIMENSIONS (mm)

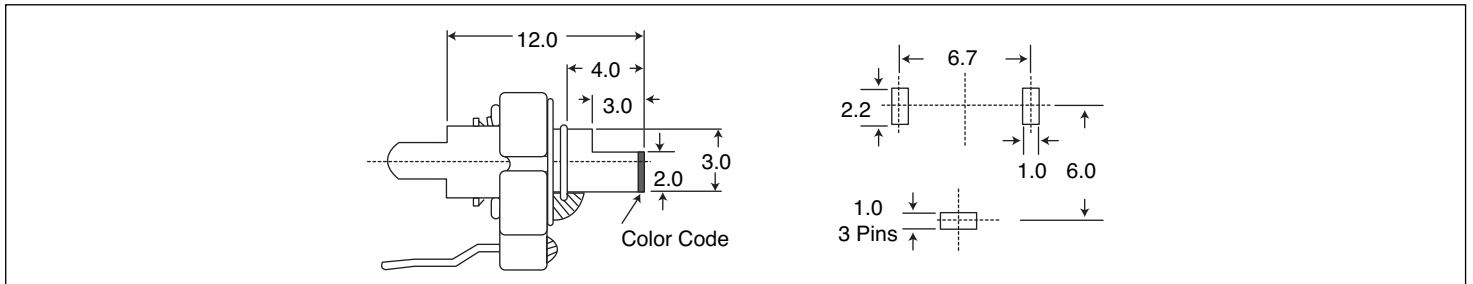
4mm Style



6mm



7mm 3410 Style



7mm 3810 Style

