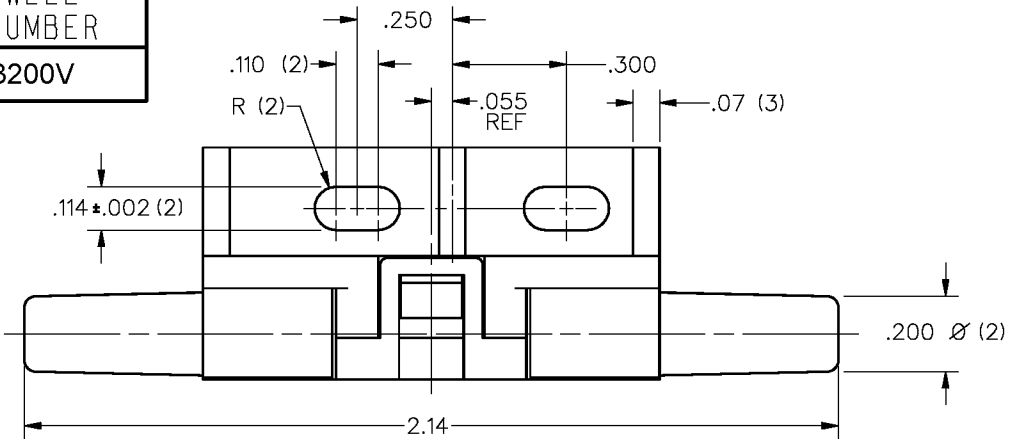


HONEYWELL
PART NUMBER

AWM3200V



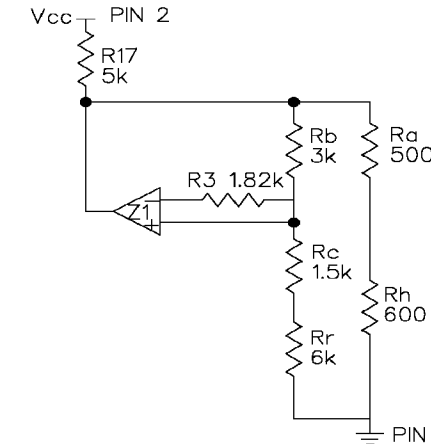
SPECIFICATIONS:	AWM3200V
RECOMMENDED EXCITATION	10.00 ±.01VDC
POWER CONSUMPTION	60mW MAX
OUTPUT VOLTAGE @ LASER TRIM POINT	5.00 VDC @ 2 IN. H ₂ O
NULL VOLTAGE	1.00 ±.08 VDC
NULL VOLTAGE SHIFT (-25°C TO +85°C)	±25mV
OUTPUT VOLTAGE SHIFT (+25°C TO -25°C)	+24.0% F.S.O.
OUTPUT VOLTAGE SHIFT (+25°C TO +85°C)	-24.0% F.S.O.
REPEATABILITY & HYSTERESIS	±.50% F.S.O. MAX
RESPONSE TIME	3.0 msec MAX
OPERATING TEMPERATURE RANGE	-25°C TO +85°C
STORAGE TEMPERATURE RANGE	-40°C TO +90°C
TERMINATION (ON .100 CENTERS)	0.025 SQ. IN.
WEIGHT	10.8 GRAMS
SHOCK RATING (5 DROPS, EACH OF 6 AXES)	100G PEAK
OVERPRESSURE	25 psi MAX

REV	DOCUMENT	CHANGED BY	CHECK
5	0013772	RS 16JUNE05	AK

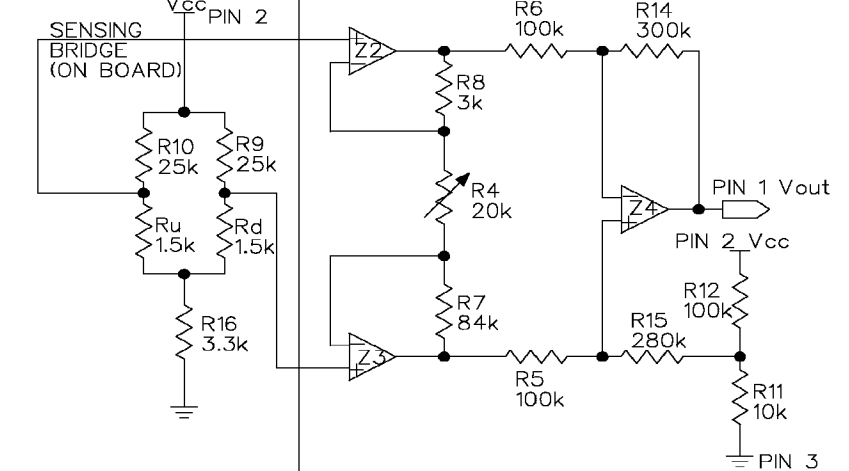
AWM3200V
OUTPUT FLOW VS. INTERCHANGEABILITY

PRESS IN. H ₂ O	NOMINAL (VDC)	TOL. (±VDC)
2.00	5.00	0.15
1.75	4.59	0.15
1.50	4.16	0.16
1.25	3.70	0.20
1.00	3.25	0.22
0.75	2.65	0.22
0.50	2.15	0.19
0.25	1.55	0.11
0.00	1.00	0.08

HEATER CONTROL CIRCUIT

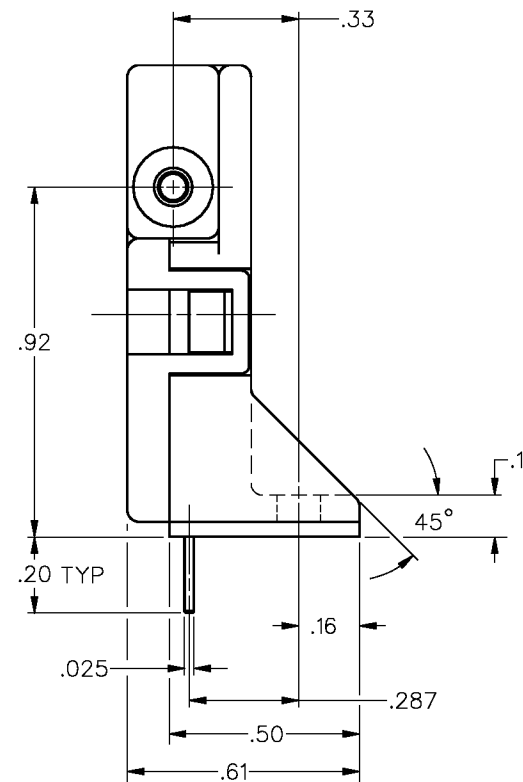
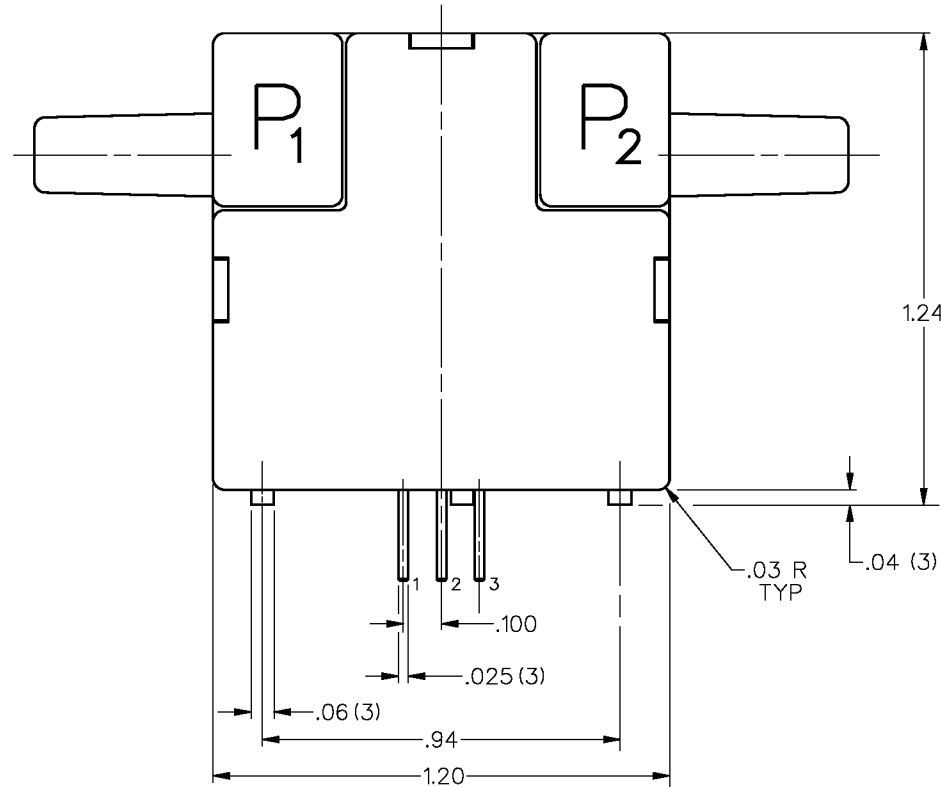


SENSING BRIDGE SUPPLY CIRCUIT AND DIFFERENTIAL INSTRUMENTATION AMPLIFIER (ON BOARD)



OUTPUT CONNECTIONS

- PIN 1 OUTPUT VOLTAGE
- PIN 2 + SUPPLY VOLTAGE
- PIN 3 GROUND



DESIGN UNITS: INCH	
TOLERANCES UNLESS NOTED:	
NO PLACE	X ±
ONE PLACE	.X ±
TWO PLACE	.XX ±
THREE PLACE	.XXX ±
FOUR PLACE	.XXXX ±
ANGLES	±
THIRD ANGLE PROJECTION	

DRAWN	KAG	09JAN90
CHECK	JAF	11JAN90
THIS DRAWING COVERS A PROPRIETARY ITEM AND IS THE PROPERTY OF HONEYWELL. THIS DRAWING IS NOT TO BE COPIED OR USED WITHOUT THE PERMISSION OF HONEYWELL.		
INTERPRET PER ASME Y14.5M-1994 OTHER HONEYWELL ENGINEERING STANDARDS MAY APPLY		

REPLACES X86494-AW			
Honeywell			
TITLE MASS AIRFLOW SENSOR			
SIZE	TYPE	DRAWING NAME	REV
B	I	AWM3200V	5
SCALE	3:1	SHEET	1 OF 1

NOTES
1 - POSITIVE FLOW DIRECTION IS DEFINED AS PROCEEDING FROM P1 TO P2 AND RESULTS IN POSITIVE OUTPUT (PIN 1 > PIN 3). NEGATIVE FLOW DIRECTION IS DEFINED CONVERSELY AND RESULTS IN NEGATIVE OUTPUT (PIN 1 < PIN 3)

REPLACES X86494-AW