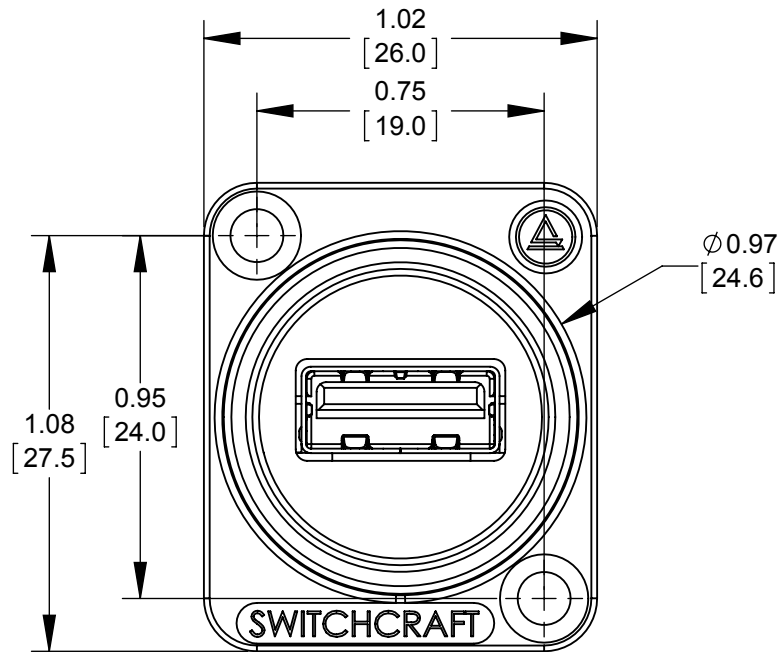
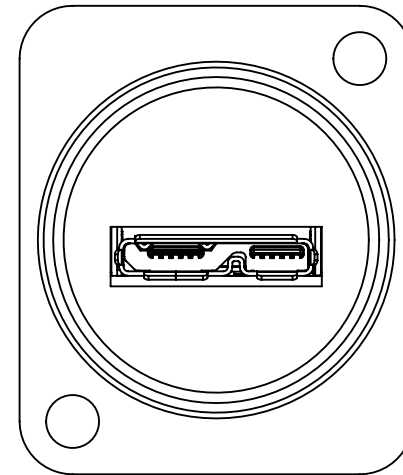
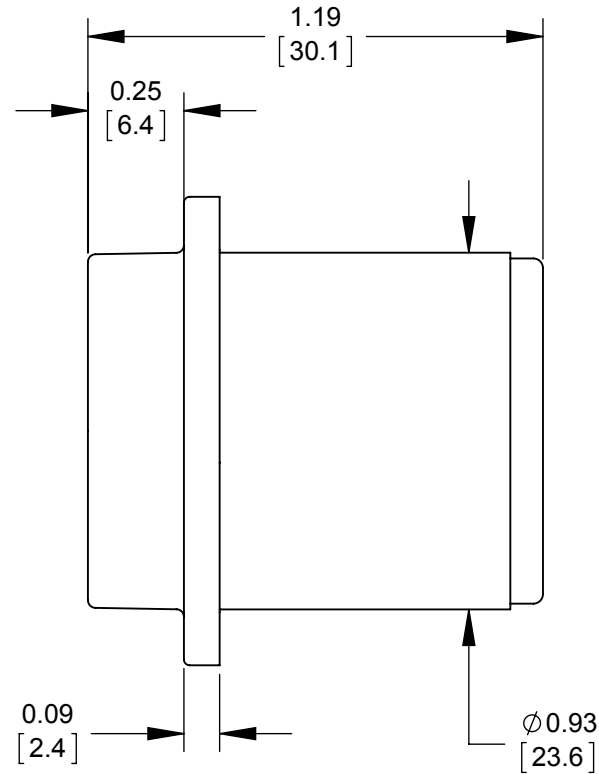


RECOMMENDED
PANEL CUT-OUT



FRONT



BACK

SPECIFICATIONS

1. FRONT CONNECTOR

- **TYPE:** USB 3.0A
- **MECHANICAL CHARACTERISTICS:**
 - INSERTION FORCE: 7.8 lb
 - WITHDRAWAL FORCE 1.8 lb
- **CONTACT PLATING:** GOLD

2. BACK CONNECTOR

- **TYPE:** MICRO USB 3.0 AB
- **MECHANICAL CHARACTERISTICS:**
 - INSERTION FORCE: 7.8 lb
 - WITHDRAWAL FORCE 1.76 lb
- **CONTACT PLATING:** GOLD

3. OVERALL:

- **MECHANICAL:**
 - **VIBRATION:** MIL-STD 202G METHOD 201A
- **ENVIRONMENTAL:**
 - **THERMAL SHOCK:** MIL-STD-202G METHOD 107G CONDITION A
 - **OPERATING TEMP:** 0 TO 65°C
- **HOUSING MATERIAL:** THERMOPLASTIC, BLACK.

CUSTOMER DRAWING

NOTES:

1- ALL PARTS ARE RoHS COMPLIANT.

					<div>UNLESS OTHERWISE SPECIFIED</div> <div>1. ALL DIMENSIONS IN INCHES [mm]</div> <div>- TWO PLACE DECIMALS ±0.02 [0.5]</div> <div>- THREE PLACE DECIMALS ±0.005 [0.13]</div>	THIS DRAWING DESCRIBES A DESIGN CONSIDERED PROPRIETARY IN NATURE, DEVELOPED AND MANUFACTURED BY SWITCHCRAFT INC. AND IS RELEASED ON A CONFIDENTIAL BASIS FOR IDENTIFICATION PURPOSES ONLY.						
						SIZE *	WIDTH *	MULT *	LBS/M *	TEMPER *		
						FINISH *			MATERIAL *			
						SPEC No. *			SPEC No. *			
						FIRST USED ON *		SCALE 1:1		<div>Switchcraft®</div>		
						DATE DRAWN	BY	CHKD	APVD			
0A	PRELIMINARY	4/11/16	NS	SRC		4/11/16	NS	NS	SRC			
							4/11/16	4/11/16				
REV	ECO NUMBER	DATE	BY	APVD	<div>DO NOT SCALE DRAWING</div>	NAME EH SERIES USB 3.0 TYPE A TO MICRO USB 3.0 TYPE AB				PART No. EHUSB3ACAB		REV 0A
REVISIONS												