

System connectors - FLKM 50-PA-S400 - 2294500

Please be informed that the data shown in this PDF Document is generated from our Online Catalog. Please find the complete data in the user's documentation. Our General Terms of Use for Downloads are valid (<http://phoenixcontact.com/download>)




VARIOFACE front adapter, for Siemens SIMATIC® S7-400, 1 x 32 channels can be connected

Why buy this product

- Transmission of a maximum of 32 digital channels via a 50-pos. system cable

Key Commercial Data

Packing unit	2 STK
GTIN	 4 017918 129750
Weight per Piece (excluding packing)	198.47 g
Weight per piece (including packing)	198.855 g
Country of origin	Germany

Technical data

Ambient conditions

Ambient temperature (operation)	-20 °C ... 50 °C
Ambient temperature (storage/transport)	-20 °C ... 70 °C

General

Nominal voltage U_N	< 50 V AC 60 V DC
Max. permissible current	1 A (per path) 8 A (per connection, supply via separate power supply)
Max. permissible total current	2 A (per Byte, for supply via connector) 8 A (during supply via a separate bridged power supply)
Mounting position	any
Degree of protection	IP00
Standards/regulations	IEC 60664 DIN EN 50178 IEC 62103
Rated insulation voltage	63 V
Rated surge voltage	0.6 kV (Functional insulation)

System connectors - FLKM 50-PA-S400 - 2294500

Technical data

General

Degree of pollution	2
Overvoltage category	II

Connection data 1

Connection name	Controller level
Channels which can be connected	32

Connection data 2

Connection name	Field level
Connection method	IDC/FLK pin strip
Number of connections	1
Number of positions	50
Pitch	2.54 mm

Supported controller

Controller	SIEMENS S7-400
- suitable I/O card	6ES7 421-1BL01-0AA0
	6ES7 421-7BH01-0AB0
	6ES7 421-7DH00-0AA0
	6ES7 422-1BL00-0AA0
	6ES7 422-7BL00-0AB0

Standards and Regulations

Connection in acc. with standard	CUL
Standards/regulations	IEC 60664
	DIN EN 50178
	IEC 62103
Degree of pollution	2
Overvoltage category	II

Classifications

eCl@ss

eCl@ss 4.0	27250313
eCl@ss 4.1	27250313
eCl@ss 5.0	27250313
eCl@ss 5.1	27250313
eCl@ss 6.0	27242208
eCl@ss 7.0	27242208
eCl@ss 8.0	27141152
eCl@ss 9.0	27141152

System connectors - FLKM 50-PA-S400 - 2294500

Classifications

ETIM

ETIM 2.0	EC001423
ETIM 3.0	EC001423
ETIM 4.0	EC001423
ETIM 5.0	EC002780

UNSPSC

UNSPSC 6.01	30211824
UNSPSC 7.0901	39121421
UNSPSC 11	39121421
UNSPSC 12.01	39121421
UNSPSC 13.2	39121421

Approvals

Approvals

Approvals

UL Recognized / cUL Recognized / EAC / cULus Recognized

Ex Approvals

Approvals submitted

Approval details

UL Recognized

cUL Recognized

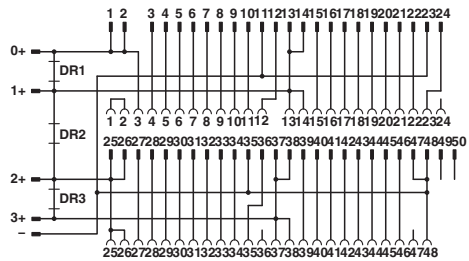
EAC

cULus Recognized

System connectors - FLKM 50-PA-S400 - 2294500

Drawings

Circuit diagram



Connection scheme FLKM 50-PA-S400

Phoenix Contact 2016 © - all rights reserved
<http://www.phoenixcontact.com>

PHOENIX CONTACT GmbH & Co. KG
Flachsmarktstr. 8
32825 Blomberg
Germany
Tel. +49 5235 300
Fax +49 5235 3 41200
<http://www.phoenixcontact.com>