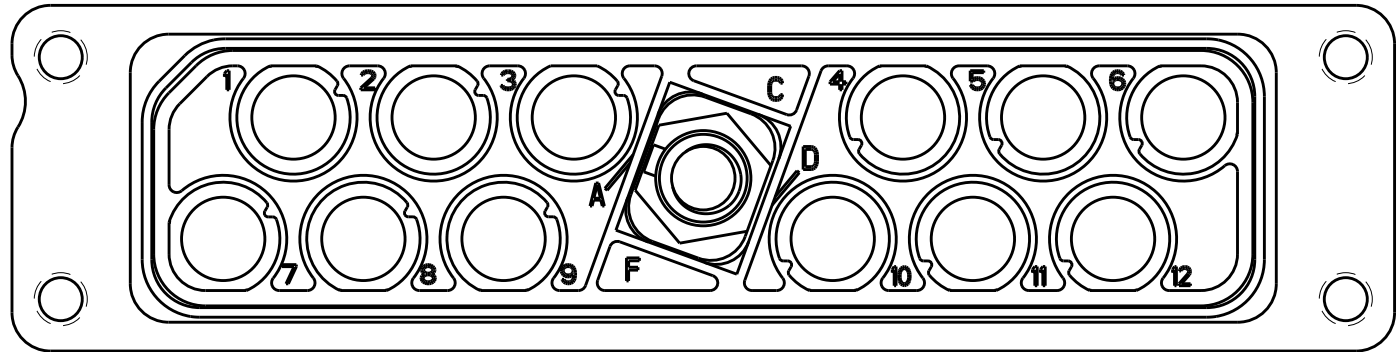
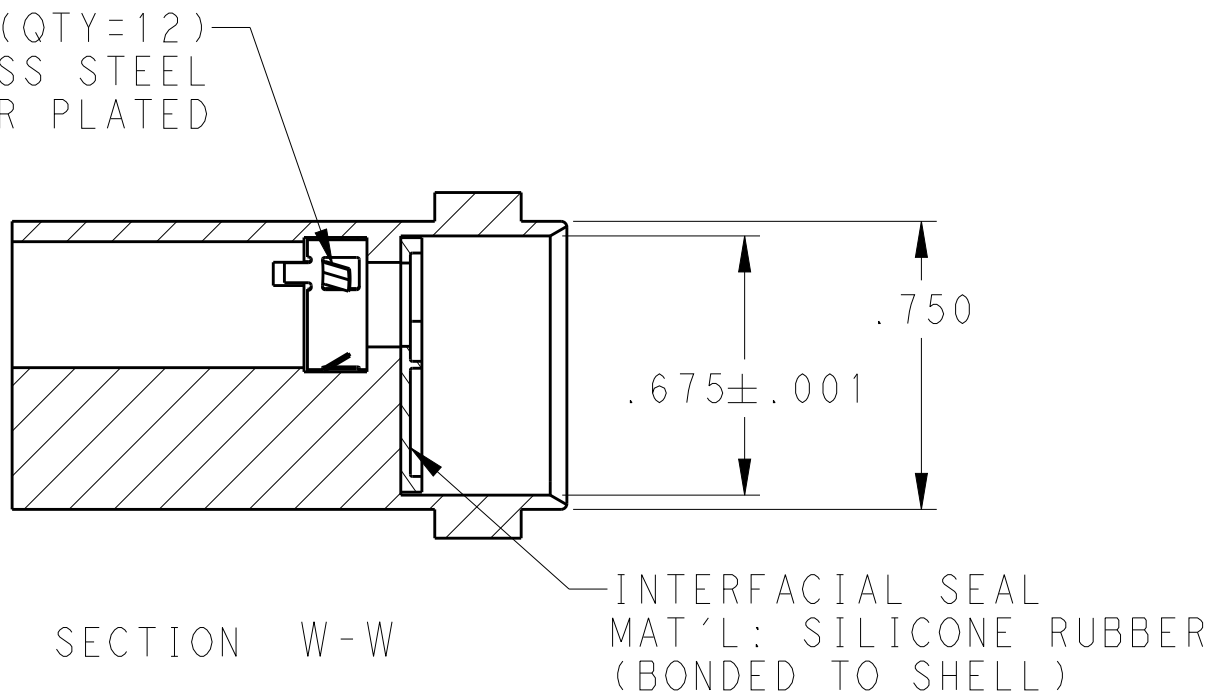
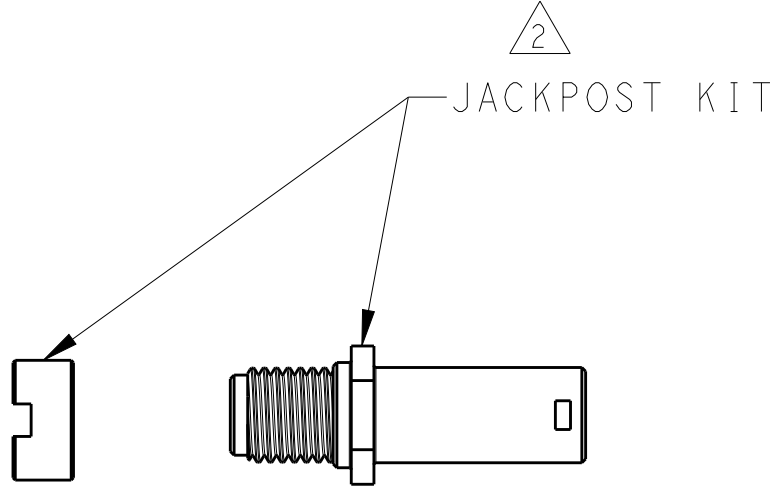
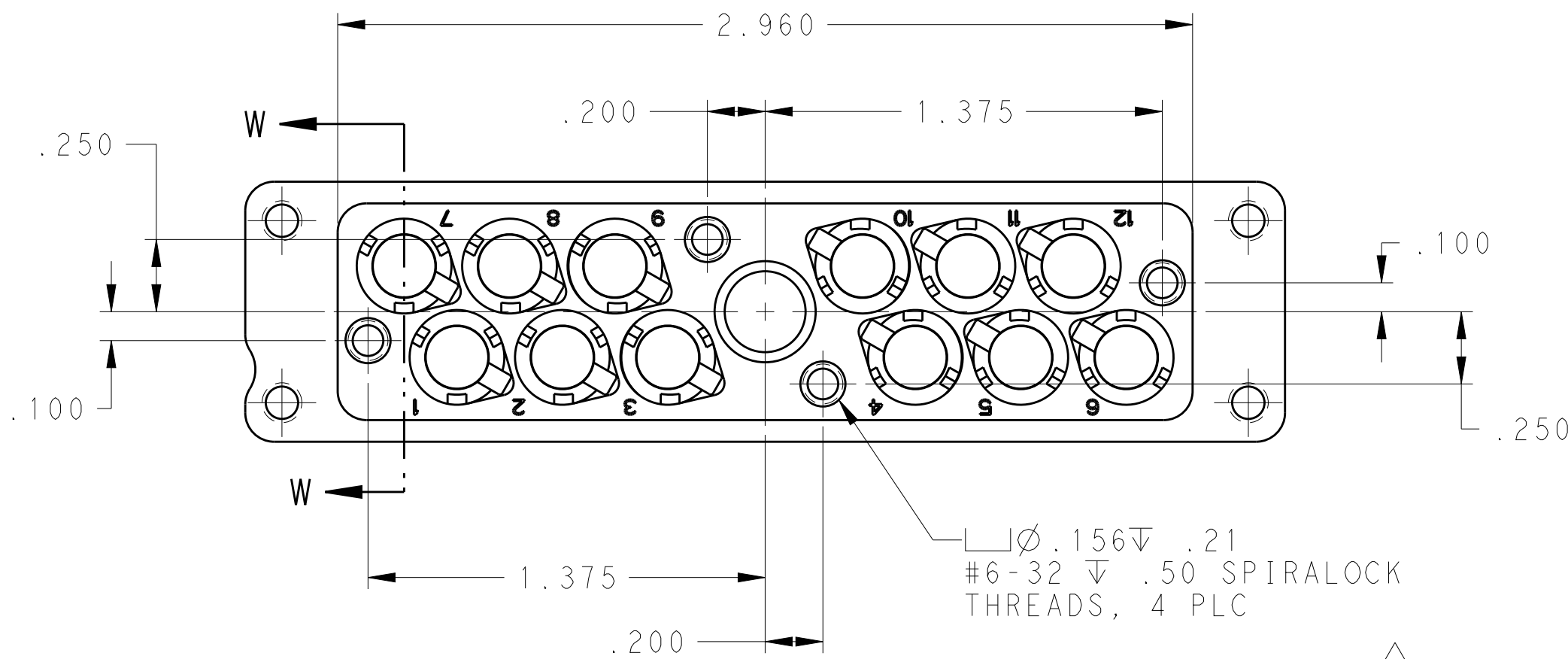
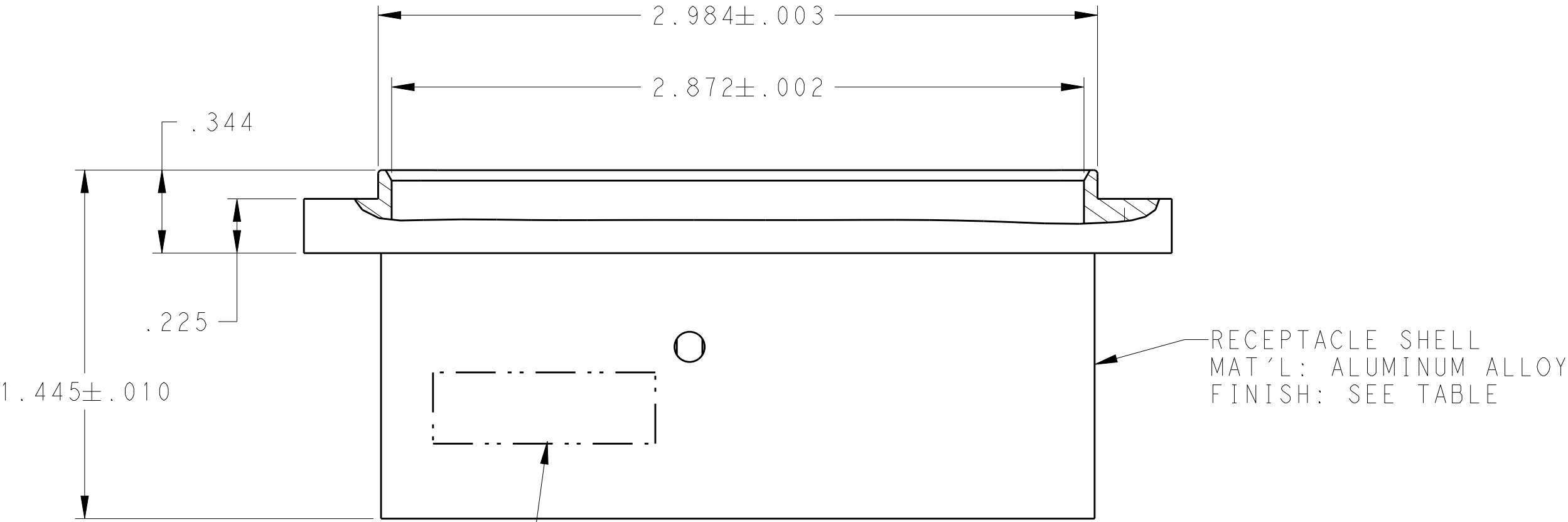
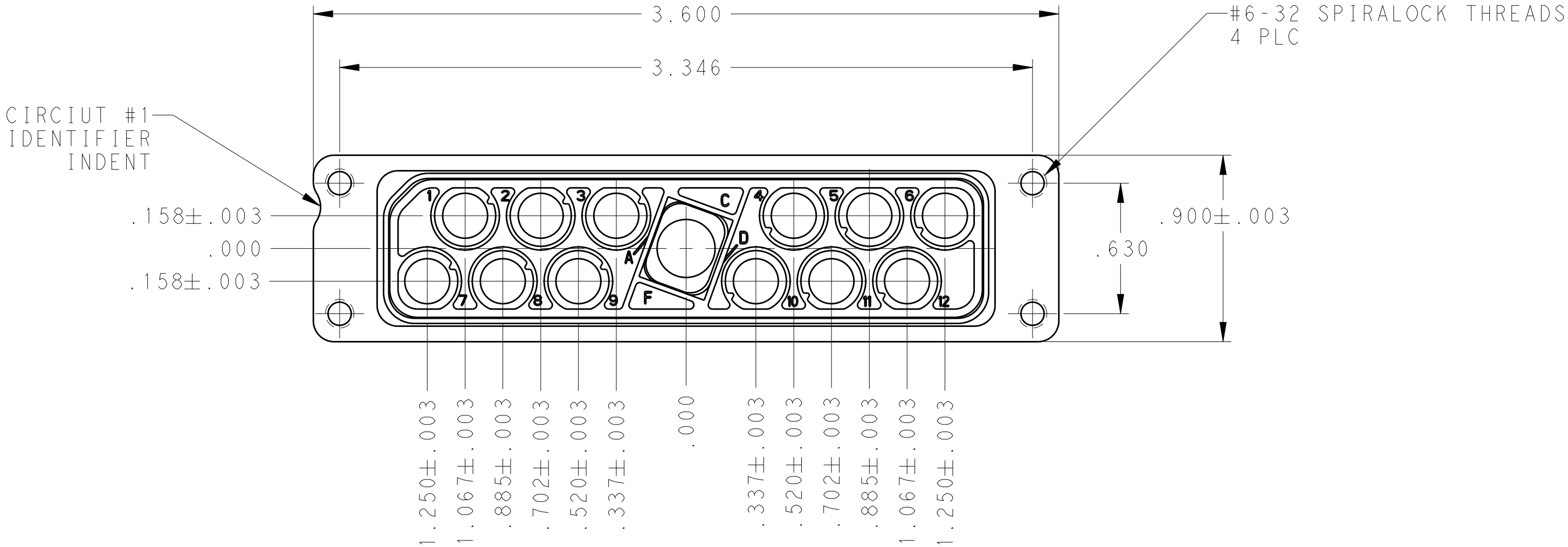
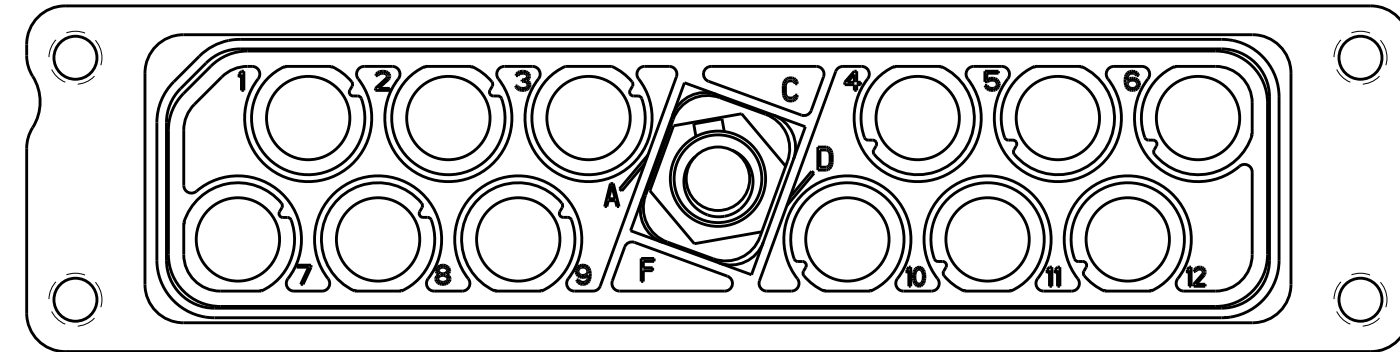


LOC		DIST		REVISIONS					
-		-		DESCRIPTION		DATE	DWN	APVD	
		P	LTR						
			G	REV PER ECO 15-009778			7-6-15	CT	DM



1604799-9 SHOWN
KEYED IN "A" POSITION



1-1604799-0 SHOWN
KEYED IN "B" POSITION

4	ELECTROLESS NICKEL	1445692-4	BACC65BD12NB	JACKPOST ASSEMBLED POLARIZATION CODE "B"	1-1604799-0
3	ELECTROLESS NICKEL	1445692-4	BACC65BD12NA	JACKPOST ASSEMBLED POLARIZATION CODE "A"	1604799-9
2	ELECTROLESS NICKEL	1445692-4	BACC65BD12N	WITH JACKPOST KIT (FLAT POLARIZATION) (NOT INSTALLED)	1604799-8
2	ELECTROLESS NICKEL	1445692-3	---	WITH JACKPOST KIT (FLAT POLARIZATION) (NOT INSTALLED)	1604799-7
2	ELECTROLESS NICKEL	1445692-3	---	WITH JACKPOST KIT (FLAT POLARIZATION) (NOT INSTALLED)	1604799-5
2	BLACK ANODIZED	1445692-4	BACC65BD12A	WITH JACKPOST KIT (FLAT POLARIZATION) (NOT INSTALLED)	1604799-4
REMARKS	HOUSING FINISH	RECOMMENDED CONTACT WITH WIRE SEAL (NOT INCLUDED)	CUSTOMER PART NUMBER	DESCRIPTION	TE PART NO

OBSOLETE

SUPERSEDED BY 1604799-5

RCPT
1604996-X
CONDUCTIVE

DUST COVER
(INSTALLED FOR SHIPPING)

THIS DRAWING IS A CONTROLLED DOCUMENT.		DWN C.C. THOMAS 29NOV2010	TE Connectivity		
DIMENSIONS: INCHES		CHK D. MILLER 29NOV2010			
TOLERANCES UNLESS OTHERWISE SPECIFIED:		APVD D. MILLER 29NOV2010	NAME RECEPTACLE ASSY, QUADRAX, PANEL MOUNT RR/RR, 12 POSITION		
D 1 PLC ±.005 2 PLC ±.005 3 PLC ±.005 4 PLC ±.005 ANGLES ±.005 FINISH SEE CALLOUTS		PRODUCT SPEC	SIZE A100779		
MATERIAL SEE CALLOUTS		APPLICATION SPEC	CAGE CODE 1604799		
		WEIGHT	RESTRICTED TO		
		CUSTOMER DRAWING	SCALE 2:1 SHEET 1 OF 1 REV G		