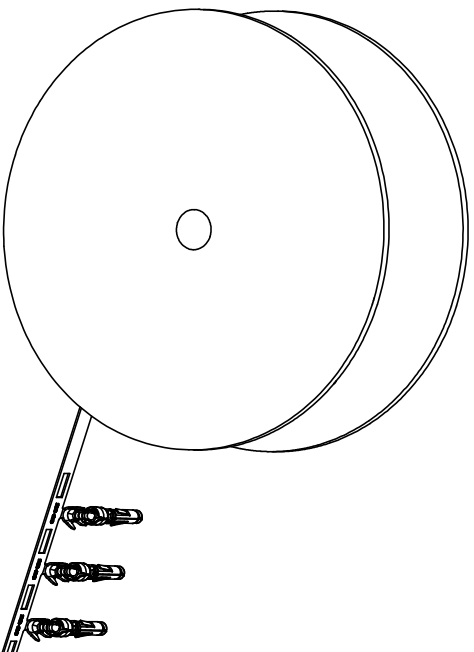


REVISIONS				
REV	ECO	DESCRIPTION	DATE	BY APPR
A1	-	RELEASED DRAWING	Nov-9-17	Rookie Tommy
A2	-	ADD THE GS PART NUMBER	Jan-28-19	Blink Tommy
A3	-	CHANGE HAND CRIMPER	Nov-8-19	Flan Tommy

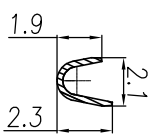
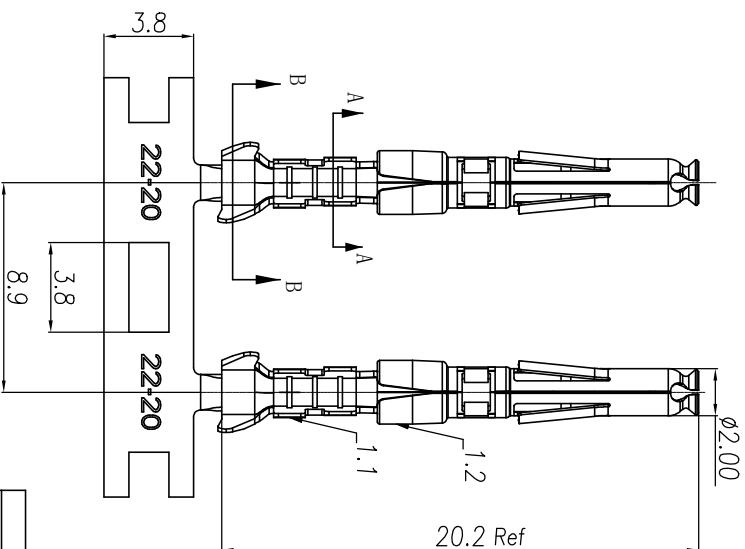
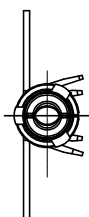


CONTACT ORIENTATION ON ROLL

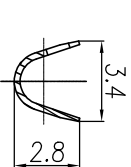
NOTES: (UNLESS OTHERWISE SPECIFIED)

- MATERIAL:
  - CONTACT BODY: COPPER ALLOY.
  - OUTER SPRING: STAINLESS STEEL.
- SPECIFICATIONS:
  - CURRENT RATING: 5A MAX.
  - TERMINATION TYPE: CRIMPING.
  - WIRE RANGE: 22~20AWG.
  - WIRE INSULATION DIA(MAX):  $\varnothing 2.6\text{mm}$ .
- RHS COMPLIANT.
- ALL DIMENSIONS ARE FOR REFERENCE USE ONLY.
- AVAILABLE TOOLS:
  - HAND CRIMPER: MFX-3958. <sup>(A3)</sup>
  - CRIMP APPLICATOR: MFX-3957.
  - EXTRACTION TOOL: QXRT20.

P/N	CONTACT PLATING(MATING AREA)
SS20W2T	TIN PLATING OVER NICKEL.
SS20W2N	NICKEL PLATING OVER COPPERIZE.
SS20W2F	GOLD FLASH PLATING OVER NICKEL.
SS20W2G5	5 $\mu$ " GOLD PLATING OVER NICKEL.
SS20W2G10	10 $\mu$ " GOLD PLATING OVER NICKEL.
SS20W2G15	15 $\mu$ " GOLD PLATING OVER NICKEL.
SS20W2G30	30 $\mu$ " GOLD PLATING OVER NICKEL.



SECTION A-A



SECTION B-B

QUANTITY	PART NUMBER	DESCRIPTION	ITEM

**MATERIALS LIST**

UNLESS OTHERWISE SPECIFIED			
1) All dimensions are in millimeters.	DRAWN: <b>RH</b>	DATE: <b>Nov-8-19</b>	<p><b>Amphenol</b></p> <p>Sine Systems - www.amphenol-sine.com</p> <p>44724 Monty Drive</p> <p>Clinton Township, MI 48038</p>
2) Tolerances are as follows:	CHECKED: <b>RH</b>	DATE: <b>Nov-8-19</b>	
1 Ft. DEC 2010	ENGINEER: <b>Tommy</b>	DATE: <b>Nov-8-19</b>	
3 Ft. DEC 2010	APPROVE: <b>Tommy</b>	DATE: <b>Nov-8-19</b>	
3) Note reference =	CUSTOMER: <b>Tommy</b>	DATE: <b>Nov-8-19</b>	

PROCESS SPECIFICATIONS		MATERIAL SPECIFICATIONS	
ECO-MATE SOCKET CONTACT, STAMPED, 20-22AWG, SIZE 20	SIZE TYPE: <b>B C-</b>	SCALE: <b>NONE</b>	REVISION: <b>A3</b>

(A2)