

Accessories

Slide Rail



For 1U rackmount chassis

- 26" P/N: 9680006902



For 2U and higher rackmount chassis

- 26" P/N: 9680006905

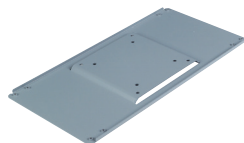
ARK-6 Series Accessories



ARK-WLAN-USB

ARK-6 series Wireless LAN 802.11 b/g module (USB connection)

- 802.11b/g standard
- USB 2.0 interface
- Range: Indoors up to 80m
Outdoors up to 250m



989K008732

VESA mounting plate for ARK-6000 series (except for ARK-6610)

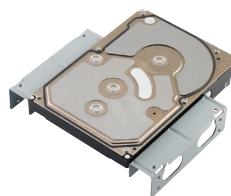
Industrial Disk Tray/Bay



IDT-5101

Shockproof industrial hard disk drive tray with cooling fan and optional front USB and PS/2 interfaces

- Accepted HDD: 1 x 3.5" (only for 9.5mm thickness)
- Cooling Fan: 1 x 4 cm
- Material: Heavy duty steel plate with coating
- Color (Codes): Gray (414U), Black (4C2X)
- Dimensions (W x H x D): 148.5 x 42.6 x 171 mm (5.85" x 1.68" x 6.73")
- Weight: 400 g (0.88 lb)
- P/N: IDT-5101, IDT-5101-BLK, IDT-5121, IDT-5121-BLK with dual USB & PS/2



989K008733

A frame to securely fix a 3.5" HDD in a 5.25" drive bay



989K008734

A frame to securely fix two 2.5" HDDs in a 3.5" drive bay



IDT-3120E

Mobile rack for converting a 3.5" drive bay to dual 2.5" SATA HDD trays

- Accepted: 2 x 2.5" SATA HDD (only for HDD thickness with 9.6 mm)
- Material: Heavy duty steel with electroplating
- Dimensions (W x H x D): 25.4 x 101.6 x 147.5 mm

* Does not support 2.5" SAS HDD



IDT-5230E

Mobile rack for converting dual 5.25" drive bays to three 3.5" SAS/SATA HDD trays

- Accepted HDD: 3 x 3.5" SAS/SATA HDD
- Cooling Fan: 1 x 8 cm
- Materials: heavy duty steel with electroplating
- Dimensions (W x H x D): 86 x 148 x 224.7 mm