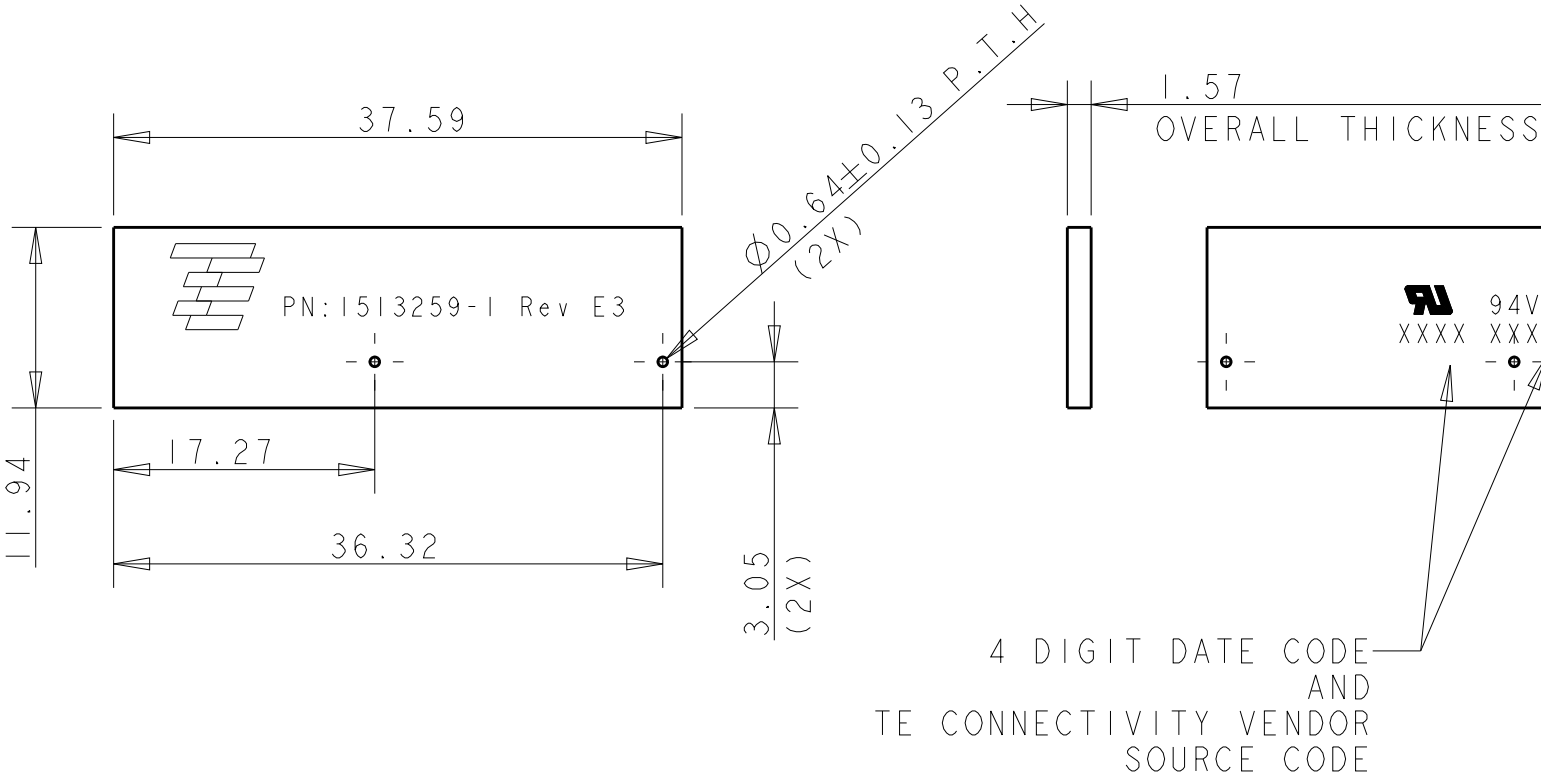



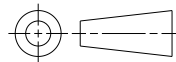
LOC	DIST	REVISIONS					
		P	LTR	DESCRIPTION	DATE	DWN	APVD
HQ	00		E3	REVISED PER ECO-12-0016455	12SEP2012	DW	GG

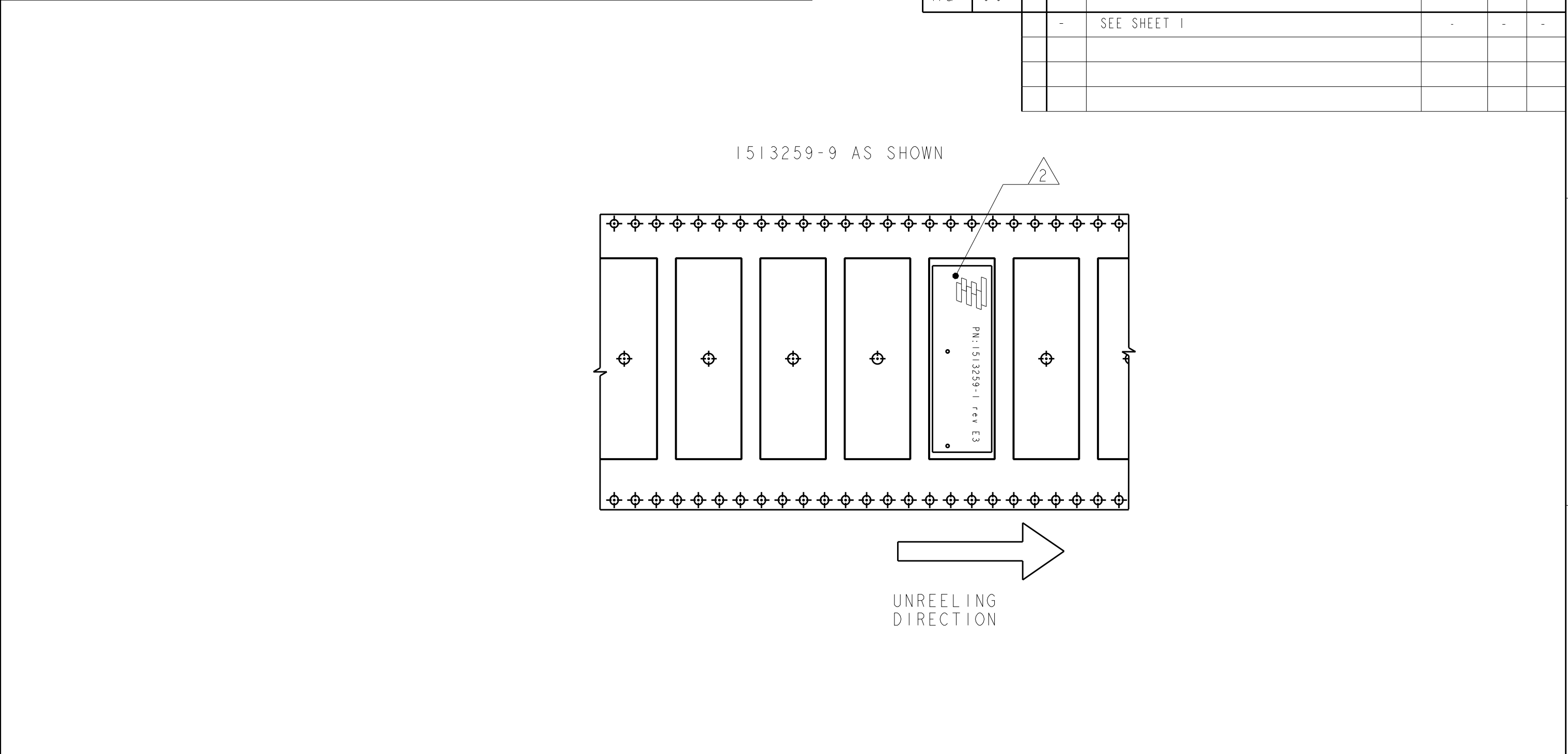


- NOTES: UNLESS OTHERWISE SPECIFIED.
- FABRICATE TO MEET IPC - 6012, CLASS 2. INSPECT TO MEET IPC - A - 600, CLASS 2.
 - PRIMARY AND SECONDARY SIDES SHOWN.
 - MATERIAL: GETEK 8 PLY (7628) 1.49JTHK. GRADE RG200D 1/2 OZ. COPPER BOTH SIDES. DIELECTRIC CONSTANT @ 1MHZ 4.2 ± 0.1.
 - FINISH:
A: 1/2 Oz COPPER PLATING
B: SOLDERMASK OVER BARE COPPER (SMOBC).
C: MASK BOTH SIDES OF PCB WITH LPI SOLDERMASK. SOLDERMASK COLOR: NATURAL GREEN.
D: TOP AND BOTTOM OF PABS E.N.I.G PLATING
 - TWO PLACE TOLERANCES: ± 0.23
 - PACKAGING: SINGULATED PARTS TO BE SECURELY SHRINK WRAPPED, BAGGED OR VACUUM PACKED IN BULK. FOR TAPE AND REEL SEE SHEET 2
 - PARTS ARE COMPLIANT TO ROHS STANDARDS PER TE CONNECTIVITY STANDARD TEC-138-702.
 - CONSULT TE CONNECTIVITY DATA SHEET DSI513259
 - CONTACT TE CONNECTIVITY ENGINEERING PRIOR TO DESIGNING INTO AN APPLICATION


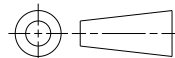
FOR BULK PACKAGING, ORDER P/N 1513259-1

FOR TAPE & REEL PACKAGING, ORDER P/N 1513259-9

THIS DRAWING IS A CONTROLLED DOCUMENT.		DWN DJL	13MAR2007		 TE Connectivity										
DIMENSIONS: mm		CHK	-	NAME World GSM Antenna - -											
		APVD	-												
		PRODUCT SPEC						SIZE A3		CAGE CODE 00779		DRAWING NO C-1513259		RESTRICTED TO -	
		-													
		APPLICATION SPEC													
		-													
		ANGLES													
MATERIAL -		FINISH -		CUSTOMER DRAWING		SCALE 1:2		SHEET 1		OF 2		REV E3			



- NOTES: UNLESS OTHERWISE SPECIFIED.
- 1. REFER TO TE CONNECTIVITY DRAWING NO. C-1533293 (PN: 1533293-7) FOR PACKAGING CONTROLLED DOCUMENT SPECIFICATION.
 - 2. ORIENT PARTS AS SHOWN.
 - 3. PARTS ARE COMPLIANT TO RoHS STANDARDS PER TE CONNECTIVITY STANDARD TEC-138-702
 - 4. ALL INFORMATION ON THIS DRAWING IS CONFIDENTIAL AND PROPRIETARY TO TE CONNECTIVITY.

THIS DRAWING IS A CONTROLLED DOCUMENT.		DWN DJL	13MAR2007		 TE Connectivity	
DIMENSIONS: mm		TOLERANCES UNLESS OTHERWISE SPECIFIED:		NAME World GSM Antenna		
		0 PLC ±-		-		
		1 PLC ±-		-		
		2 PLC ±-		-		
		3 PLC ±-		-		
		4 PLC ±-		-		
ANGLES ±-		PRODUCT SPEC		SIZE		
		-		CAGE CODE		
MATERIAL		FINISH		DRAWING NO		
-		-		RESTRICTED TO		
		WEIGHT		A300779		
		-		C-1513259		
CUSTOMER DRAWING				SCALE		REV
				1:2		E3
				SHEET 2 OF 2		