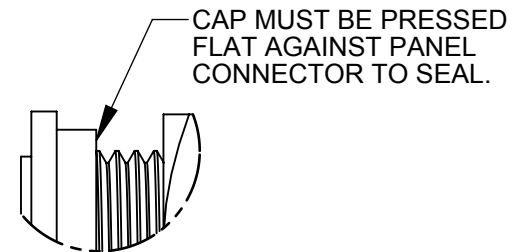
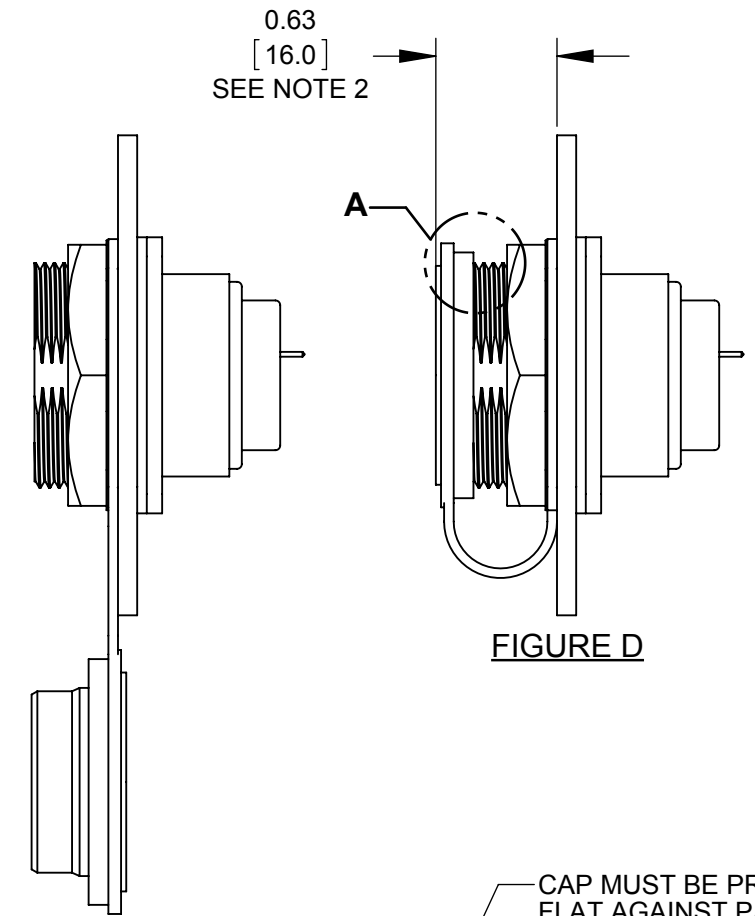
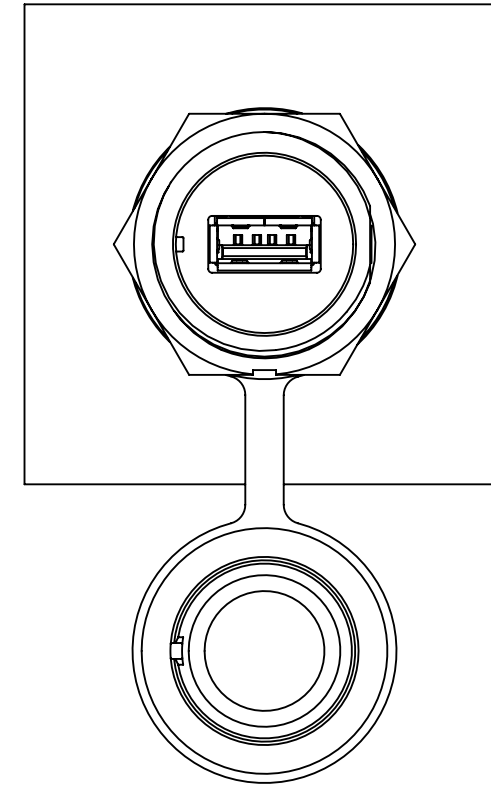
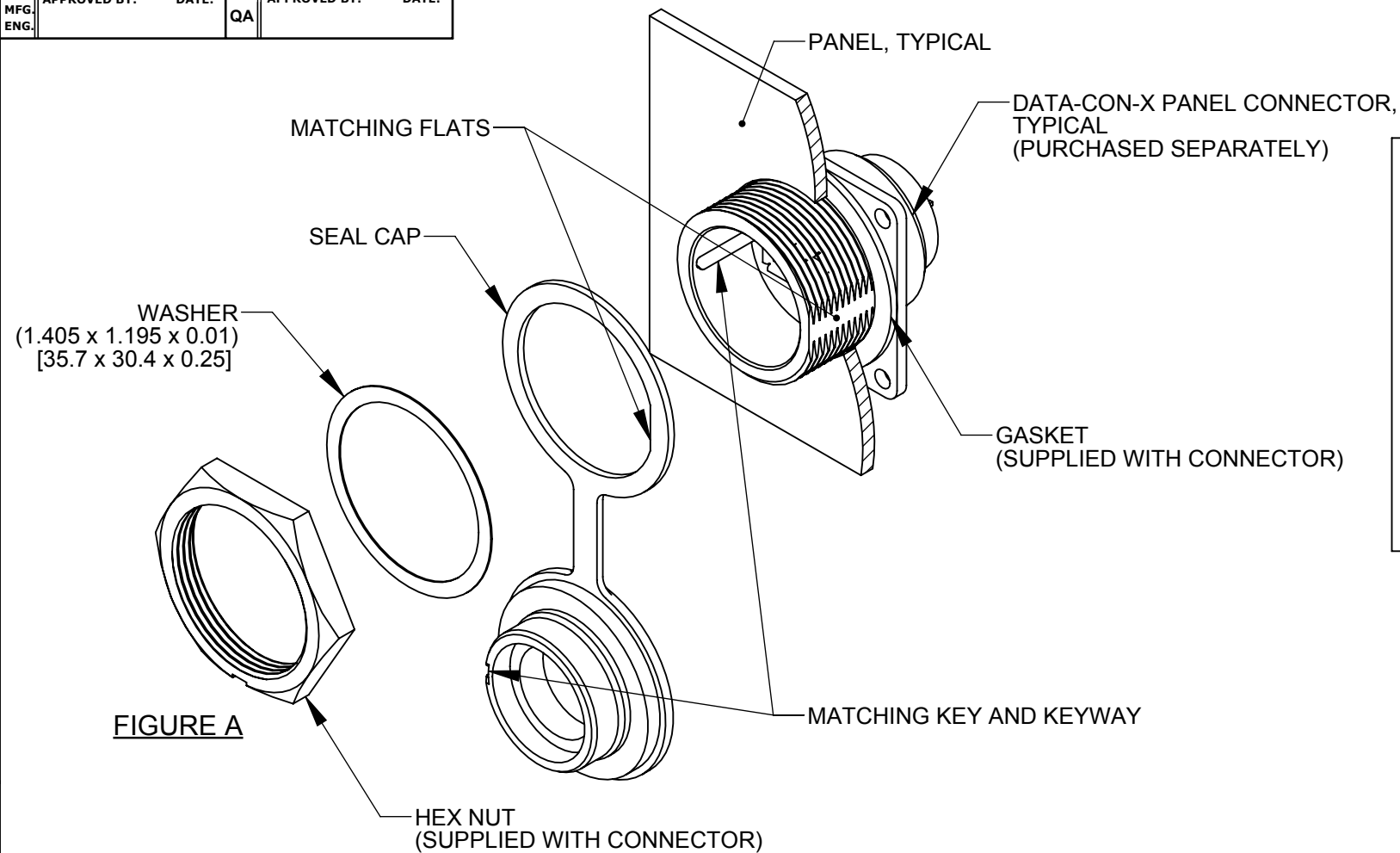
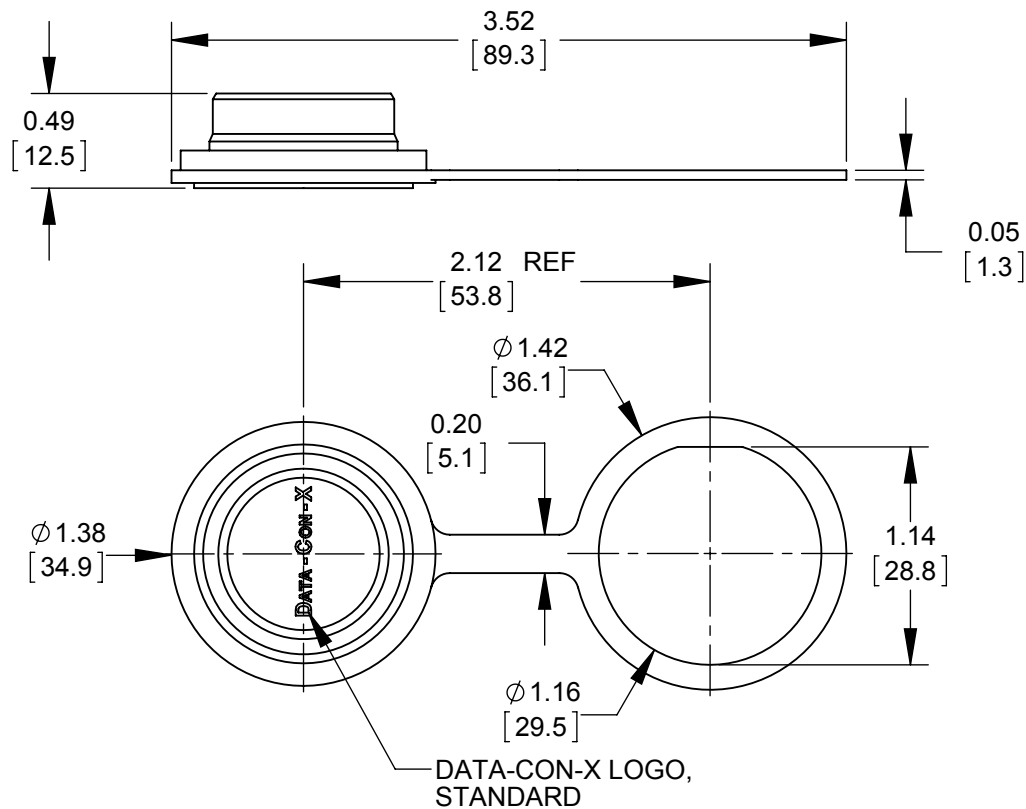


MFG. ENG.	APPROVED BY:	DATE:	QA	APPROVED BY:	DATE:
--------------	--------------	-------	----	--------------	-------



DETAIL A
SCALE 2 : 1



DIMENSIONS SHOWN FOR REFERENCE ONLY


DIMENSIONS IN BRACKET [] ARE METRIC.

RoHS COMPLIANT

NOTES:

1. D24295-WA CONTAINS ONE SEAL CAP AND ONE FLAT WASHER.
2. THE DIMENSION DOES NOT INCLUDE GASKET COMPRESSION.
3. INSTALL SEAL CAP ON THE CONNECTOR AS SHOWN IN FIGURE A. HEX NUT RECOMMENDED TORQUE: 8-10 lb-in [0.90 - 1.13 N-m].
4. MATERIAL: SEAL CAP - THERMOPLASTIC ELASTOMER, BLACK
WASHER - MYLAR, WHITE
5. UNLESS OTHERWISE SPECIFIED TOLERANCES:
TWO PLACE DECIMALS ± 0.02 [± 0.5]

CUSTOMER DRAWING

0A		JGK	8/27/15		DRAWING CREATED FOR DATA-CON-X IP CAP.					
REV.		INIT.		DATE		DESCRIPTION				
ALL INFORMATION ILLUSTRATED IS THE PROPERTY OF "CONKALL CORPORATION." UNAUTHORIZED DUPLICATION OR DISTRIBUTION OF THIS DOCUMENT IS PROHIBITED.					ORIG. DRAWN BY: JGK		DATE: 8/27/15		 601 E. WILDWOOD VILLA PARK, IL 60181	
					CHECKED BY:					
ALL UNITS ARE IN FEET, INCHES, FRACTION OF INCHES AND DECIMALS. UNLESS OTHERWISE SPECIFIED TOLERANCES: 3 PLACE DECIMALS ±.005 ANGLES ±1° FRACTIONS ±1/16 ▷ = CRITICAL CHARACTERISTIC FLAG PER SPEC. XXXX					APPROVED BY:		TITLE: PANEL SEAL CAP DATA-CON-X SERIES IP RATED CUSTOMER: STANDARD PRODUCT			
SCALE		SIZE		SHEET		PART NUMBER:				
1:1		B		1 OF 1		D24295-WA				
FILE: SAME AS P/N					DIRECTORY: SLW		REV 0A			