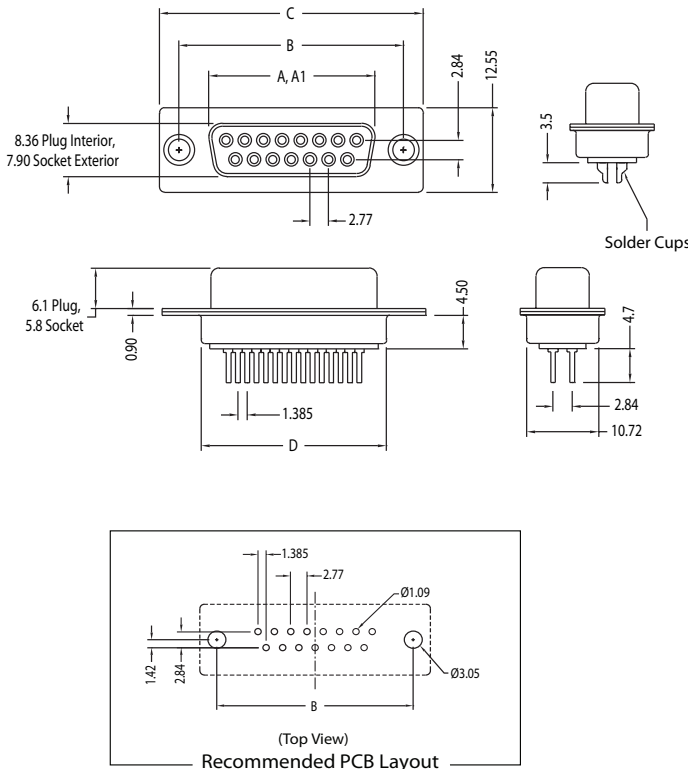


K85X Series Vertical PCB Mount and Solder Cup

K85X Series Dimensions Dimensions in mm



Number of Contacts (Shell Size)	Dimensions (Inch/mm)				
	A	A1	B	C	D
9 (E)	.643 16.33	.666 16.92	.984 24.99	1.213 30.81	.755 19.18
15 (A)	.971 24.66	.994 25.25	1.312 33.32	1.541 39.14	1.083 27.51
25 (B)	1.511 38.38	1.534 38.96	1.852 47.04	2.088 53.04	1.614 41.00
37 (C)	2.159 54.84	2.182 55.42	2.500 63.50	2.729 69.32	2.272 57.30

A = Exterior of Female Shell (S) A1 = Interior of Male Shell (P)

D-SUBMINIATURE CONNECTORS

K85X Series

Documentation & Ordering Information

Kycon Part #

Part Number Builder

Series	Shell Type	Pin Length	Contact Option	Contact Type	Mounting Option	Plating Option
--------	------------	------------	----------------	--------------	-----------------	----------------

Series

K85X - D-Subminiature Vertical Connector

Contact Shell Size Option

E - 9 Contacts

A - 15 Contacts

B - 25 Contacts

C - 37 Contacts

Contact Construction, Pin Length

A - Precision Formed, Solder Cup (Not Available with BR/BRJ)

D - Precision Formed, Vertical Pin (PCB Mount)

Contact Type

P - Pin Contact (Plug)

S - Socket Contact (Receptacle)

Mounting Option

Blank - Through Hole

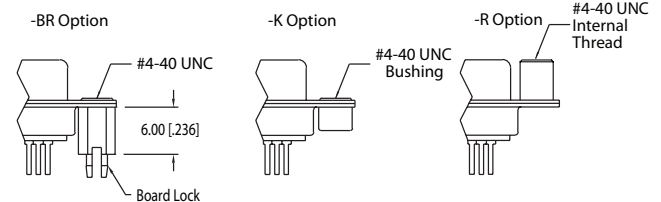
BR - With (4-40) Riveted Threaded Tin Plated Board Lock

BRJ - With (4-40) Riveted Threaded Tin Plated Board Lock and (4-40) Hex Jack Screws Installed

K - With (4-40) Bushings

KJ - With (4-40) Bushings and (4-40) Hex Jack Screws

R - With Round Riveted Jack Screws



* Hex Jack Screws JSX-1055 Recommended for BR Option

Plating Option

Blank - Gold Flash

15 - 15u" Gold

30 - 30u" Gold